

Fugitive Dust Control Plan for CCR Rule

Hayden Station

Date: October 19, 2015

Revision: 0

Table of Contents

Revision Log	1
Certification of Plan	1
1 Introduction	2
2 Fugitive Dust Control	2
2.1 Overview	2
2.2 CCR Dust Control Areas	3
2.2.1 Plant Roads (40 CFR 257.80(b)(1))	3
2.2.2 Units 1 and 2 Bottom Ash Bins (40 CFR 227.80 (b)(1) and (2))	3
2.2.3 Fly Ash and FGD Silo (40 CFR 227.80 (b)(1) and (2))	3
2.2.4 Ash Hauling (40 CFR 227.80 (b)(1) and (2))	3
2.2.5 CCR Landfill (40 CFR 227.80 (b)(1) and (2))	4
2.3 Watering Procedure	4
2.4 Recordkeeping	4
3 CCR Areas Inspection (40 CFR 257.80(b)(4))	5
4 Fugitive Dust Complaint Log (40 CFR 257.80(b)(3))	5
5 Plan Updates (40 CFR 257.80(b)(6))	5

Appendices

A: Facility Site Map

B: Complaint Log

Revision Log

Revision No.	Revision Date	Revised Sections	Notes
0	October 19, 2015	NA	Original Publication

Certification of Plan

The Plan shall be prepared, signed and sealed by a professional engineer.

"I hereby certify that this plan meets the requirements of the Coal Combustion Residual Rule (40 CFR 257.80(b)(7))."

Print name:

Sara Lubchenko

Signature:

Sara Lubchenko

Date:

10/5/2015

License #:

0044344



1 Introduction

On April 17, 2015 the U.S. Environmental Protection Agency (EPA) published regulations under subtitle D of the Resource Conservation and Recovery Act (RCRA) meant to control the disposal of coal combustion residuals (CCR) generated by coal fired power plants. The rule defines a set of requirements for the management of CCR in landfills and surface impoundments. 40 CFR 257.80(a) specifies that an owner or operator of a CCR landfill, surface impoundment, or lateral expansion of a CCR unit must develop a Fugitive Dust Plan by October 19, 2015 that will effectively mitigate the transport of CCR fugitive dust from the facility. Controlling fugitive dust associated with CCR at Hayden Station (Hayden) is addressed through a fugitive dust control program. Hayden is required to establish a Fugitive Dust Control Plan (Plan) and follow it at all times. This Plan has been specifically designed to outline measures that will minimize airborne dust at the plant under the CCR rule.

CCR sources are the loading and unloading of fly ash and Flue Gas Desulfurization (FGD) silo, bottom ash from the boilers, transport of CCR from the silo to the landfill or off site, transport of the bottom ash from the bins to the landfill, emplacement of the fly and bottom ash in the landfill, and fugitive dust emissions from unpaved roads.

The Plan includes activities such as conditioning CCRs for handling, controlling vehicle speeds, watering of roads and work areas, observing changes in meteorological conditions, and following processes and procedures intended to minimize dust. Because the facility is currently required to manage and monitor fugitive dust emissions as required by the Title V permit, the Hayden staff and CCR contractor are actively engaged in dust control on a continuous basis. This Plan is a formal statement of the activities and the methods specifically designed to minimize the creation of airborne dust, meeting all of the applicable requirements of the CCR Rule.

Based on implementation of the Title V fugitive dust plan, all of the control measures in place have proven to be effective in the prevention or control of airborne fugitive dust. Each measure has been carefully planned and executed based on site-specific operating conditions in order to achieve the intended control. The dust control measures are outlined in the sections below. Watering is the main process used to control fugitive dust from CCR storage areas, haul roads, and landfill disposal areas. Additional control measures are also in place for these areas and are described in the sections below.

2 Fugitive Dust Control

2.1 Overview

The primary control for fugitive dust is the wetting of CCR during unloading from storage areas (conditioning in the fly ash silo and dewatering in the bottom ash bins). If needed, additional wetting can be conducted during placement/management of CCRs in the landfill which can be exposed to varied weather, specifically during dry and windy conditions. Watering is also employed on plant haul roads to control the generation of fugitive dust, as needed. Weather conditions are visually observed/monitored by Hayden staff and the CCR contractor and watering needs are adjusted to meet operational criteria and site conditions. The following sections explain the process of controlling dust in these areas by the use of water and other control methods. The attached site map illustrates all of these areas of the facility.

2.2 CCR Dust Control Areas

Generally speaking, the process of keeping CCRs, haul roads, and other areas watered sufficiently is the most appropriate method of dust control since the equipment and materials used are reliable, cost effective, and easily adjusted to site conditions. The following sections specifically identify CCR generation areas, CCR handling operations, and the preferred control measures to reduce dusting.

2.2.1 Plant Roads (40 CFR 257.80(b)(1))

All of the CCR haul roads are unpaved roads at Hayden. All unpaved roads are surfaced with aggregate material to reduce dusting. In addition, haul roads have a posted speed limit of 30 mph to reduce dusting. By limiting speed, the fugitive dust generation is reduced, especially from some of the heavier equipment used at the facility. Finally, the unpaved haul roads are watered as needed to eliminate any residual dusting. The use of reduced speed and water application are appropriate methods for dust control because they meet the suggested control options defined in AP-42 Chapter 13.2 .2 Unpaved Roads and they have met the requirements of the Title V fugitive dust plan.

2.2.2 Units 1 and 2 Bottom Ash Bins (40 CFR 227.80 (b)(1) and (2))

Hayden utilizes a slurry system to sluice ash from the boiler bottoms to dewatering bins in a wet condition. The wet ash is stored in the bins until it is directly loaded into trucks for transport to the landfill. The bottom ash drains freely, but has a slight water content due to the sluicing operation and is a large enough particle size that it is inherently not subject to dusting.

2.2.3 Fly Ash and FGD Silo (40 CFR 227.80 (b)(1) and (2))

The loading and unloading of fly ash and FGD materials takes place in a partially enclosed building to minimize the generation of fugitive dust. In addition to the building enclosure, the silo is vented to dedicated baghouses that collect the majority of any dust created during the loading or unloading process. The use of a partial enclosure and silo venting to the baghouses are an effective way to mitigate CCR from becoming airborne during the loading and unloading process. The baghouses are inspected on a set schedule and a preventative maintenance schedule is followed to ensure the baghouse is operating correctly.

The fly ash and FGD materials are stored in a silo. The silo is equipped with a pug mill to condition the ash prior to loading into trucks for transport to the landfill or off site. The mill adds water and conditions the ash on the outlet side of the silo prior to being placed in the transport trucks. Sufficient water is used to stabilize the ash, but not result in free liquids. The pug mill is inspected on a set schedule and a preventative maintenance schedule is followed to ensure the pug mill is operating correctly.

The conditioned CCR is transferred directly from the silo to emplacement in the on-site landfill. Because there is no intermediate storage or transfer step, the CCR is still in its conditioned state from the pug mill as it is transferred and placed in the landfill. No additional dust control measures are currently considered for the emplacement of conditioned CCR in the landfill.

2.2.4 Ash Hauling (40 CFR 227.80 (b)(1) and (2))

CCR dusting can occur from the unpaved roads as equipment hauls CCR from generation points to the landfill. Another source of CCR dusting can originate from the material as it is being transferred.

Hayden employs the services of a CCR contractor for transporting the ash from the plant to the on-site landfill and for placement in the landfill. The contractor operates a water truck equipped with side and

rear spray nozzles and a hand line for dust control on plant roads and other areas, as described in this Plan.

As previously discussed, the bottom ash is not subject to dusting and no further dust suppression technologies are considered for the transport of the bottom ash. Similarly, the transport of the conditioned CCR (Fly Ash and FGD material) also does not require additional dust suppression technologies as the CCR maintains a water content that prevents dusting as the material is moved.

The process of keeping CCRs, haul roads, and other areas watered sufficiently is the most appropriate method of dust control since the equipment and materials used are reliable, cost effective, and easily adjusted to changing site conditions.

2.2.5 CCR Landfill (40 CFR 227.80 (b)(1) and (2))

The landfill is located to the southeast of the generating units and connected by unpaved roads that are approximately two miles in total travel distance. CCR from the Units is transported by trucks and hauled to the landfill. The CCR is emplaced in the landfill in a moist, conditioned state and is not subject to dusting upon placement. The moisture content percentage of the conditioned CCR is fixed at a predetermined set point. This moisture content will prevent dusting but not result in any free liquids during transportation and disposal. Once placed in the active landfill cell, the conditioned CCR is wheel rolled by the CCR contractor equipment to meet the landfill compaction specifications. If needed to stabilize the CCR until covered by soil, the CCR may be watered to form a crust on the surface and prevent dusting. Final cover is placed according to the landfill solid waste Engineering Design and Operations Plan upon completion of a lift. The CCR contractor observations determine the level of stabilization needed to control dusting and no issues with free liquid or dusting have been noted.

2.2.5.1 Modification of Operations During High Wind Events

If suspected, the CCR contractor can determine if high wind events over 40 mph continuous wind or 55 mph wind gusts are present at the facility by wind gauge instrumentation at the Coal Handling Building and verified from the Yampa Valley Airport weather station. The CCR contractor can then reduce or halt landfill operations to further reduce the potential for dust generation, if needed.

2.3 Watering Procedure

Watering for fugitive dust control is conducted throughout the year. It is governed primarily by the current and anticipated meteorological and site conditions. The control of the watering program is given to the CCR contractor who estimates the dust generation potential based on current observed conditions and their past experience. Watering is accomplished by using a water truck equipped with a watering bar and hand line.

2.4 Recordkeeping

The Hayden CCR contractor can identify the time spent by its staff on watering. Also, maintenance records are kept on the water truck to assure proper operation, as well as hours of daily use. Record keeping on watering roads is maintained in the contractor logs. Maintenance records on the CCR storage and handling systems are also maintained at the facility.

3 CCR Areas Inspection (40 CFR 257.80(b)(4))

In order to assure that all measures outlined in this Plan are in place, being followed and working effectively, they will be assessed in the weekly inspection that is done as part of the Title V permit compliance program. The weekly inspection will include verification that all fugitive dust control measures, as outlined in the plan, are being followed effectively. Documentation of weekly inspections will be through the company's environmental management software system. If there is anything to address, a maintenance work order will be initiated and tracked through the company's work management system. In addition, plant personnel are trained in opacity visual observations that are used to determine compliance with the facility Title V air permit and therefore, the effectiveness of point source controls under this Plan.

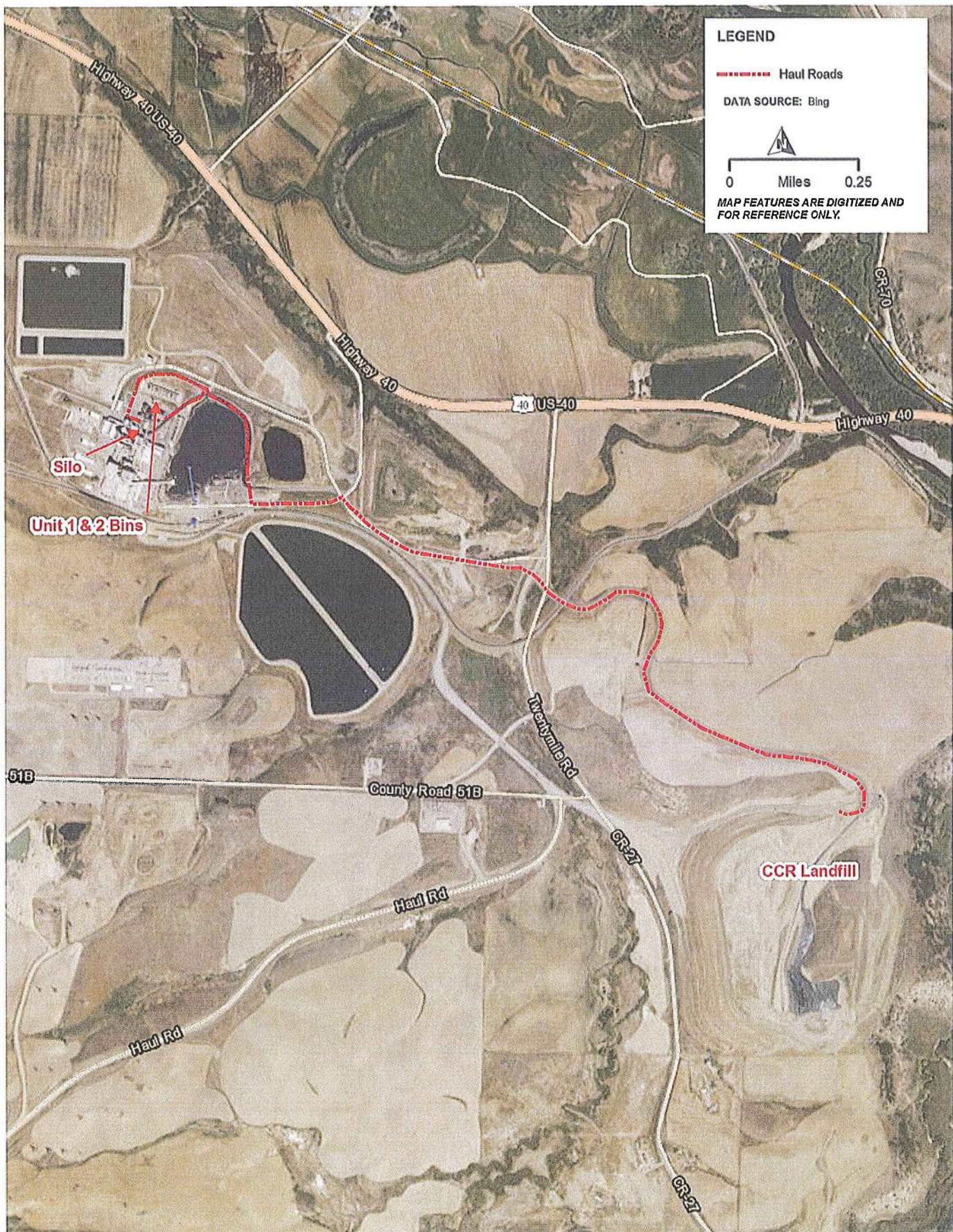
4 Fugitive Dust Complaint Log (40 CFR 257.80(b)(3))

Fugitive dust complaints received from citizens via the dedicated email account (PSCoCCRInquiries@xcelenergy.com) published on our CCR Rule Compliance Data and Information public website or to the Plant Environmental Analyst will be reviewed and investigated. Any citizen complaints of fugitive dust appearing to originate from the plant will be investigated immediately. A log will be kept to record all occurrences of confirmed fugitive dust from CCR areas. If the fugitive dust is found to have originated from the CCR areas, follow-up and corrective actions will be taken as needed. The template for this log is included as an attachment to this Plan.

5 Plan Updates (40 CFR 257.80(b)(6))

This Fugitive Dust Control Plan will be assessed annually unless a need is identified during the weekly inspection or upon analysis of a citizen complaint. As part of the assessment, all processes and procedures will be reviewed for their effectiveness and efficiency at minimizing or eliminating the generation of fugitive dust. The plan will be updated if any new dust control measures are implemented at Hayden or new CCR unit is constructed. Lastly, the facility map will be updated with any changes to CCR management areas.

Appendix A – Facility Site Map



Appendix B – Complaint Log

