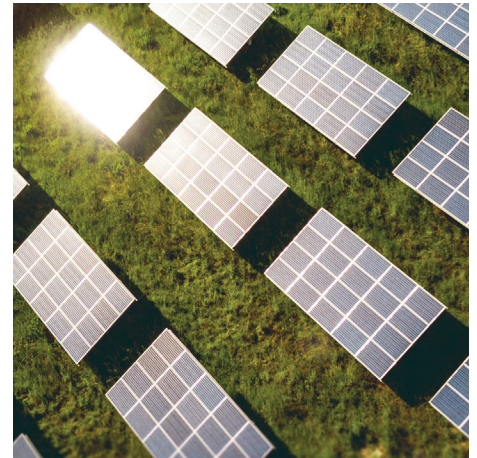


Renewable Claims Guide: Solar* Rewards Community[®]

Renewable Energy Credits (RECs) represent the environmental benefits associated with energy produced from a renewable source. When you participate in a renewable energy program, it is important to know when the RECs are included with the program, or when they are kept by Xcel Energy and used toward our company's renewable energy goals. The REC determines the statements or claims you can make regarding your renewable energy participation.

In the Minnesota Solar* Rewards Community program, the RECs for all community solar gardens are transferred to and owned by Xcel Energy.

Because the RECs are owned by Xcel Energy, there are limitations on what you can say about the RECs as a subscriber.



Examples of claims for Solar* Rewards Community subscriber¹

Acceptable	Unacceptable
<ul style="list-style-type: none"> • My subscription supports community solar • By subscribing to community solar, I help grow solar gardens • I support solar development 	<ul style="list-style-type: none"> • I use solar energy • We are using solar energy to reduce _____ % of our annual electricity use/meet our goal of _____ renewable energy • My solar garden subscription is powering our facility and reducing our carbon footprint • By subscribing to solar gardens, we have reduced emissions

What are RECs and why are they important?

RECs measure renewable energy produced and used to meet renewable energy goals. If the renewable program allows you to own the RECs, you can claim that they are offsetting your energy use or you are using renewable energy. If Xcel Energy keeps the RECs under the renewable incentive program you participate in, you are unable to claim that you offset energy use with renewable energy.

¹The examples provided by Xcel Energy are not intended as legal advice. You should consult with your own attorney regarding claims that you may make regarding your subscription to Xcel Energy's Solar* Rewards Community. For more information on acceptable and unacceptable claims, additional resources include:

www.epa.gov/greenpower/solar-power-use-claims

www.cleanenergyresourceteams.org/sites/default/files/REC-BestPracticesClaims.pdf