

# LIGHTING SPECIFICATION SHEET

## REBATE APPLICATION REQUIREMENTS CHECKLIST

**INFORMATION SHEET**  
**COLORADO | MINNESOTA**  
**NEW MEXICO**



To expedite the lighting rebate application on behalf of your customer, it is imperative that your rebate application be filled out correctly and completely.

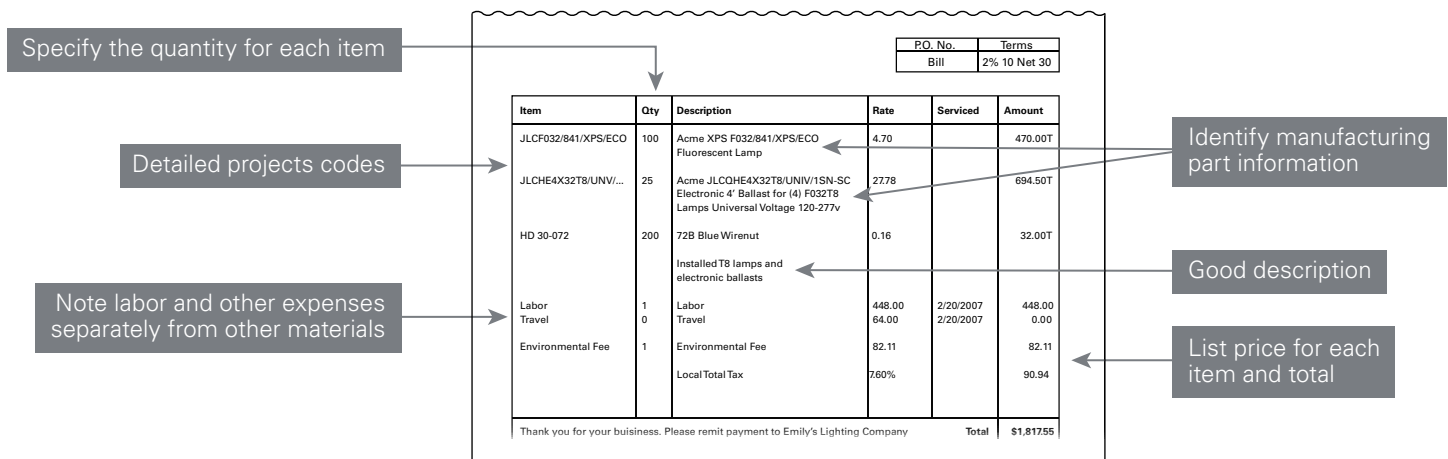
Here are some guidelines to help you along the way. In addition to invoices submitted with itemized quantity, price manufacturer's make and model number, and product codes for each material item, please submit original **equipment manufacturer (OEM) specifications sheets**.

- CEE Ballast List for T8 Retrofits
- Manufacturer T5 Ballast Data Sheet in T5 Retrofits
- Manufacturer Data Sheet for Low-Wattage T8 Lamps, CFL Fixtures and HID Fixtures
- Manufacturer Data Sheet for Wall Mount/Ceiling Mount Sensors - must indicate PIR, Ultrasonic or Dual Technology sensors
- LED Exit Sign—Manufacturer Spec sheet is required and sufficient
- ENERGY STAR® Certificate for ENERGY STAR-Qualified LED Lamps/Luminaires
- Design Light Consortium QPL for all LED Lighting below: [Case Lighting, Troffer, Parking Garage Fixtures, and Exterior Canopy, Soffit and Wall Packs]



## Sample invoice

This is an example of an invoice that would allow Xcel Energy to process the rebate application the same day it was received. Itemized invoices are **the key to fast processing of rebate forms**.



For more information, contact the Business Solution Center at **855-839-8862** or email **[EnergyEfficiency@xcelenergy.com](mailto:EnergyEfficiency@xcelenergy.com)**.