



# Utility Design and Layout

## What you need to know

Xcel Energy works to deliver reliable electric and natural gas service to our customers. Below are general guidelines to ensure your design meets our requirements for service. To find out more information on requesting service and project design, please visit [xcelenergy.com/installandconnect](https://xcelenergy.com/installandconnect).

### General guidelines

How to submit your application: Begin the design process by submitting the “FastApp” online application for electric or natural gas distribution facilities on your property to the Builders Call Line through [xcelenergy.force.com/FastApp/BP\\_Login](https://xcelenergy.force.com/FastApp/BP_Login) (case sensitive).

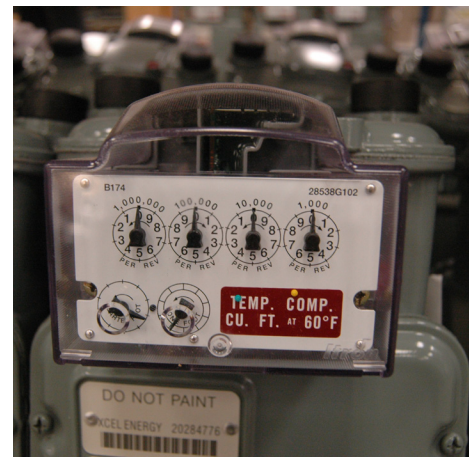
### Preliminary considerations:

- Space must be allotted on your property to install the utility facilities. This includes room for transformers on multi-unit and commercial sites.
- Zero lot line developments must provide a location on the property for a transformer and gas and/or electrical meter(s). Developers are strongly advised to coordinate with Xcel Energy during the design of these projects.
- Service drops shall not pass over adjacent private property, except where permitted by easement.
- Xcel Energy requires that all company-owned facilities on private property be covered with either a platted easement or a Public Service Company of Colorado easement, excluding gas and electrical service lines that reside solely on a customer’s property.

### Design guidelines:

When designing your project keep in mind the following clearance requirements—please refer to the yellow box on the back page for additional resources.

- **Natural gas**
  - Regulator must maintain a 6’ clearance from mechanically induced air intake and 3’ from operational doors and windows
- **Transformers**
  - 20’ outward and 10’ either side of a building door
  - 10’ outward and 10’ to either side of an air intake
  - 10’ outward and 3’ to either side of a window, 5’ from second story window
  - 30” from noncombustible building, 10’ from combustible wall
  - 20’ from all fire escape doors
- **Electric/natural gas**
  - Joint trench for electric and natural gas must maintain a 12” clearance from each other
  - 4’ clearance in front of electric and natural gas metering equipment



**Easements:**

Easements allow Xcel Energy to install, maintain, repair and replace its facilities on private property. When designing your project please keep in mind the following guidelines for easement widths.

- **Commercial property**

- Gas main – 6'
- Electrical distribution line – 10'
- Joint trench – 15'
- Transformer 15' x 15'
- Switch cabinet – 20' x 20' or 15' x 25' depending on model

- **Residential property**

- Electrical distribution line rear lots 8' and gas distribution line front lot 6'
- All others widths remain the same as commercial property

**Additional resources**

Please refer to these online resources for additional clearance and installation standards by clicking the links below.

- **Installing and connecting service**

- [Site requirements](#)
  - [Standards for electric installation and use](#)
- [Construction and inspection](#)
- [Meter installation](#)

**Builders Call Line**

Hours ..... 7 a.m. – 5 p.m.  
 Phone ..... 800.628.2121  
 Fax ..... 800.628.2521  
 Email ..... [bclco@xcelenergy.com](mailto:bclco@xcelenergy.com)

FastApp online application:

[xcelenergy.force.com/FastApp/BP\\_Login](http://xcelenergy.force.com/FastApp/BP_Login) (case sensitive)

**Land Rights Department for easements**

Denver Metro Division ..... 303.571.3326  
 North Metro Division ..... 303.425.3874  
 Southwest Metro Division ..... 303.716.2043  
 Southeast Metro Division ..... 303.671.3932  
 Boulder Division ..... 303.245.2271