



1800 Larimer St., Suite 1300
Denver, Colorado 80202

December 1, 2015

Mr. Andy Todd
Colorado Department of Public Health and Environment
Hazardous Materials and Waste Management Division
4300 Cherry Creek Drive South
Denver, CO 80246-1530

**RE: Notification Required by 40 CFR 257.106 – Final CCR Rule
Notice of Intent to Initiate Closure
Valmont Station, Inactive CCR Surface Impoundment**

Dear Mr. Todd:

Pursuant to 40 CFR Part 257.100(c)(1) of the Disposal of Coal Combustion Residuals from Electrical Utilities Rule (Federal CCR Rule), finalized on April 17, 2015, Public Service Company of Colorado (PSCo), an Xcel Energy Company, is submitting this Notice of Intent (NOI) to initiate closure of one inactive CCR surface impoundment at Valmont Station in Boulder County, Colorado. Previously under Colorado Section 9 regulations, an Inventory and Preliminary Classification Report (IPCR) was accepted by the Colorado Department of Public Health and Environment (CDPHE) on April 23, 2013, and a Closure Plan was submitted to CDPHE on September 26, 2014, for this inactive impoundment.

One (1) inactive CCR surface impoundment (EPRI Ash Settling Pond) will be closed through the removal of CCR (clean-closure option) in accordance with both the Code of Colorado Regulations, 6 CCR 1007-2 Part 1, Section 9, Waste Impoundments and the Federal CCR Rule §257.100(b)(5). Impoundments 3A and 3B are currently active and are not included in this NOI. See attached Figure for inactive impoundment location.

The closure will consist of removing all CCR (an estimated 5,000 cubic yards), liner, and impacted soils, if any, within the impoundment area to meet Federal CCR Rule regulations and Colorado clean-closure unrestricted use criteria. "Impacted soils" are soils impacted by the site industrial activity with constituent criteria that exceed the site appropriate allowable constituent levels per the CDPHE and EPA Regional Screening Level tables for the appropriate final site use.

The Settling Pond is currently dry and is not expected to require dewatering. All CCR and impacted soils removed from the Settling Pond will be characterized and either beneficially reused or disposed of at the existing on-site ash landfill. Residual liquids, if any, will be removed mechanically and transported to a licensed off-site facility for disposal or discharged, if allowed, per the facility's NPDES permit. The Settling Pond PVC liner will be removed and disposed of at a licensed off-site facility. Soils below the PVC liner will be characterized and, if impacted, disposed of at the on-site ash landfill.

CDPHE will be notified a minimum of 60 days in advance of closure activities. The Settling Pond is scheduled to be closed on or before April 17, 2018. A closure certification report will be submitted to CDPHE within 60 calendar days of completion of closure activities.

If you have any questions regarding this information, please contact me at (303) 294-2165 or contact Xcel Energy's consultant, Ms. Anna Lundin, at (303) 323-9805.

Sincerely,



Quinn V. Kilty
Manager, Environmental Services

Attachments (2): CCR Closure Certification
 Site Figure

cc:

Mr. Edward Smith, CDPHE Unit Leader Compliance Assurance
Dino Lombardi, Xcel Energy
Marie Vagher, Xcel Energy
Jennifer McCarter, Xcel Energy
Anna Lundin, HDR Inc.

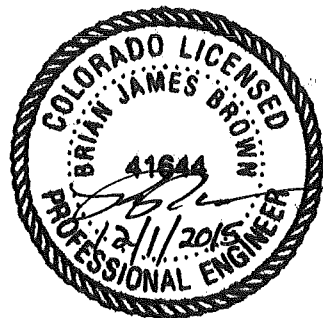
CERTIFICATION

**Public Service Company of Colorado, an Xcel Energy Company
Valmont Station
Inactive CCR Surface Impoundment Closure
Boulder, Colorado**

I hereby certify that it is technically feasible to close the inactive CCR surface impoundment (EPRI Ash Settling Pond) at the Public Service Company of Colorado, an Xcel Energy Company, Valmont Station through the removal of CCR (clean-closure option) under Section 257.100(b)(5) of the Federal CCR Rule and that the clean-closures can be completed no later than April 17, 2018 as required under Section 257.100(b)(6) of the Federal CCR Rule. I am duly licensed Professional Engineer under the laws of the State of Colorado.

Brian Brown, PE (Colorado PE 41644) December 1, 2015

My license renewal date is October 31, 2017.



LEGEND



Inactive CCR Unit



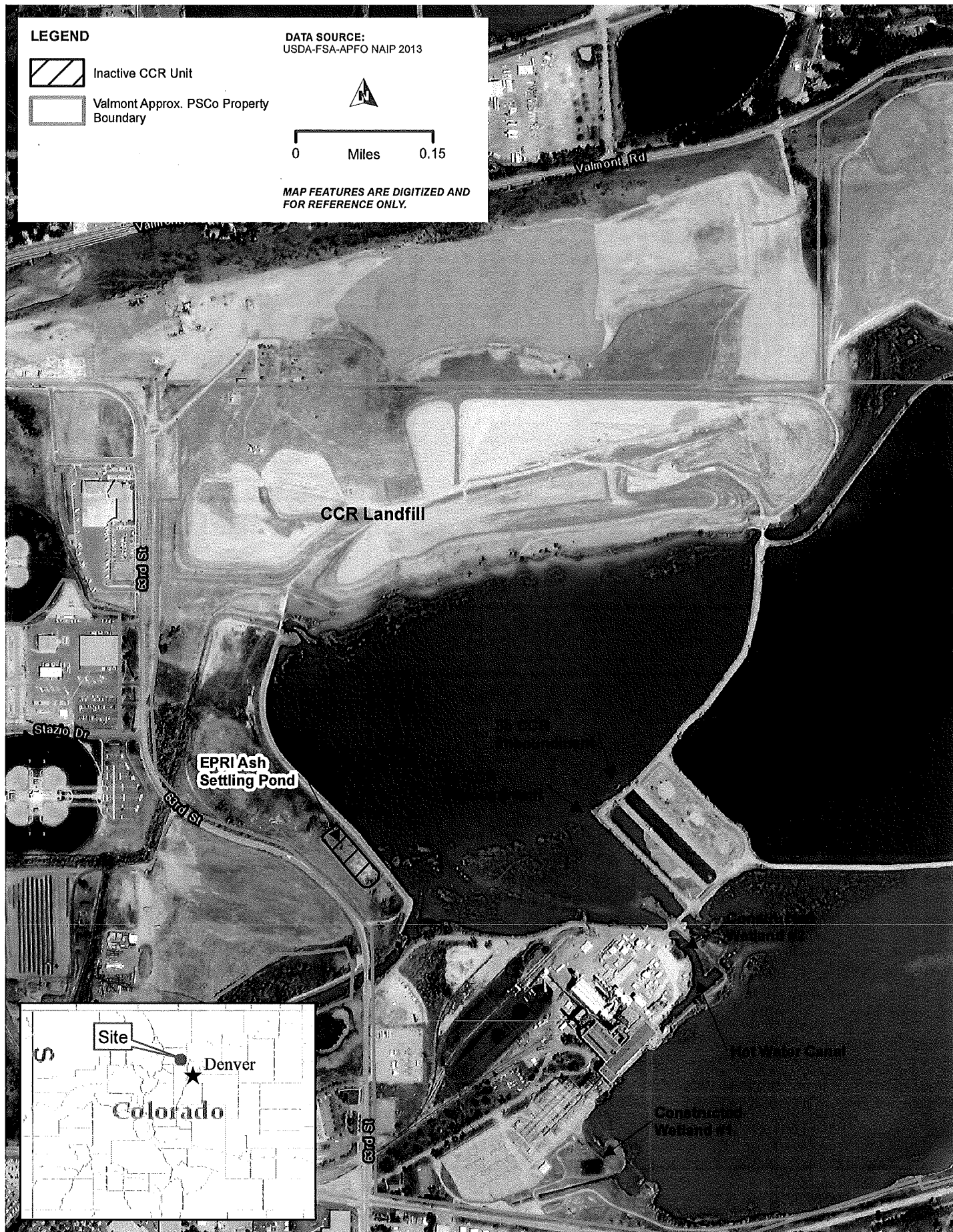
Valmont Approx. PSCo Property Boundary

DATA SOURCE:
USDA-FSA-APFO NAIP 2013



0 Miles 0.15

MAP FEATURES ARE DIGITIZED AND
FOR REFERENCE ONLY.



VALMONT POWER STATION
BOULDER COUNTY, CO