



# Combined Renewable Workgroup Meeting

March 11, 2020

# Meeting Agenda

- 1:30 - 1:40 Introductions & Agenda Overview (Cowan)
- 1:40 - 1:50 RE Plan continuation after March 31, 2020 (Klemm)
- 1:50 - 2:00 Program Dashboards (Gaspar)
- 2:10 - 2:20 Community Solar Updates (Queenan)
- 2:20 - 3:45 2020 SRC RFP (Queenan)
  - Survey Results
  - Targeted Capacity
  - RFP Scoring
- 3:45 - 4:00 Wrap Up (Cowan)



## RE Plan Continuation

# April 1 Until Approval

Program	Continuation Plan	Still Available
Solar*Rewards Small & Medium	Continue to allocate from 6 MW of Q1 capacity released	Small: 4.5 MW Medium: 5.9 MW
Solar*Rewards Large	On hold until decision	
CEO Low Income Rooftop	Continue to accept applications for 2017-2019 RE Plan projects	112 Projects
Solar*Rewards Community Standard Offer	Continue to allocate 2017-2019 open capacity	2016: 1MW (\$28.2/MWh) 2017: 0.5 MW (\$14.74/MWh) 2018: 0.5 MW (\$15.92/MWh) 2018 LI: 0.5MW (\$5.20/MWh) 2019: 0.5 MW (\$10.125/MWh) 2019 LI: 0.5MW (17.105/MWh)
Solar*Rewards Community RFP	On hold until decision	
Windsorce / Renewable*Connect	Continue as is	

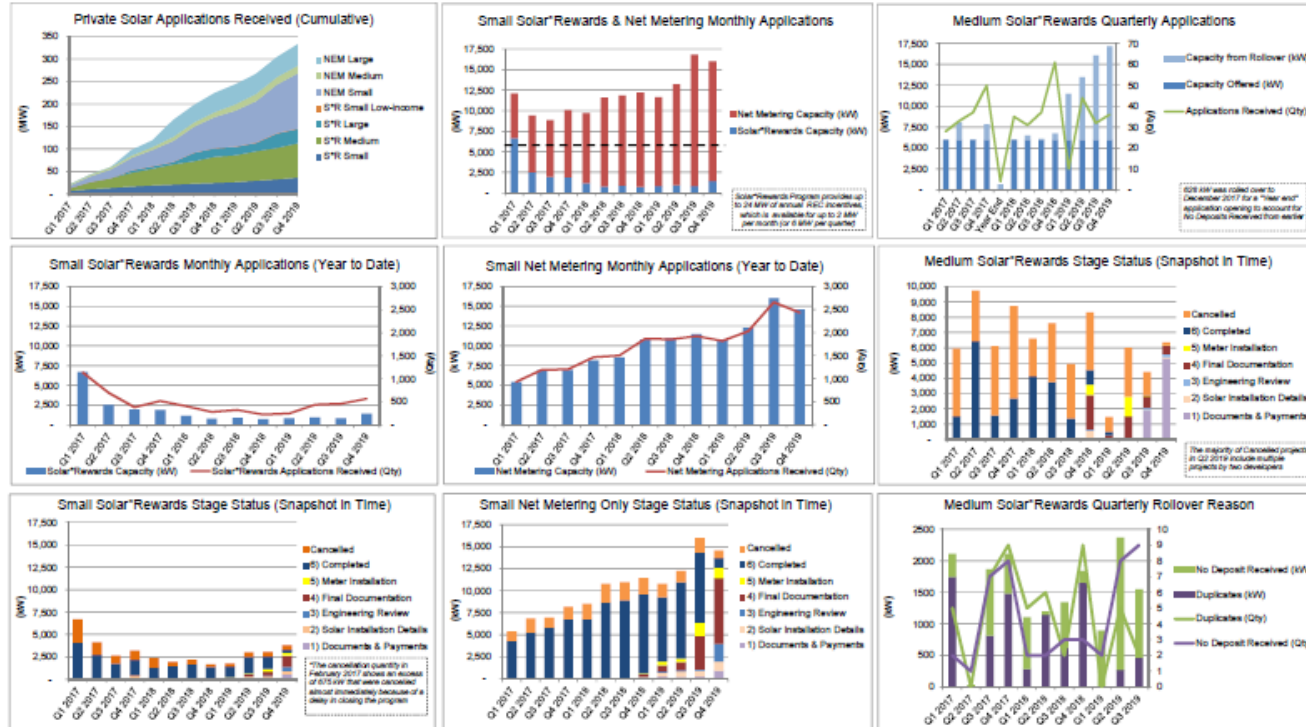


## Program Dashboards

# Solar\*Rewards 2019 Year in Review

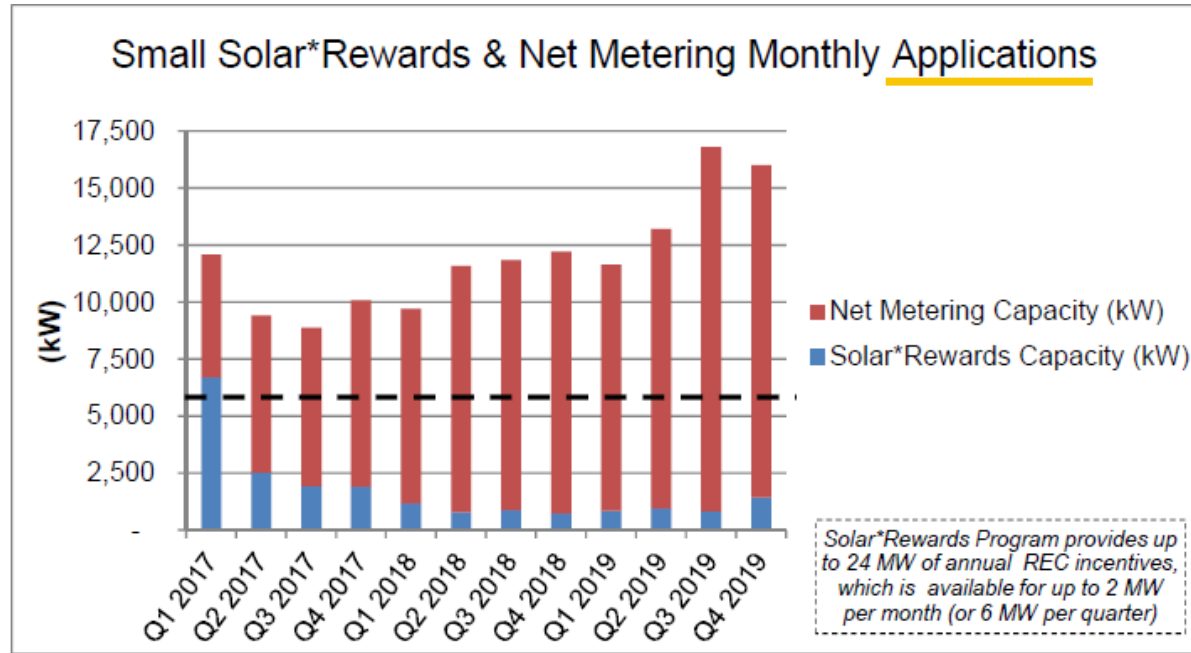
- In 2019, 7,000 + customers installed over 70 MW of new customer-sited solar with an almost even split between Solar\*Rewards (33MW) and NEM (37MW) only interconnections.
- Since 2006, cumulative installations have reached 464 MW and nearly 55,000 systems.

# Solar\*Rewards – Quarterly Dashboard



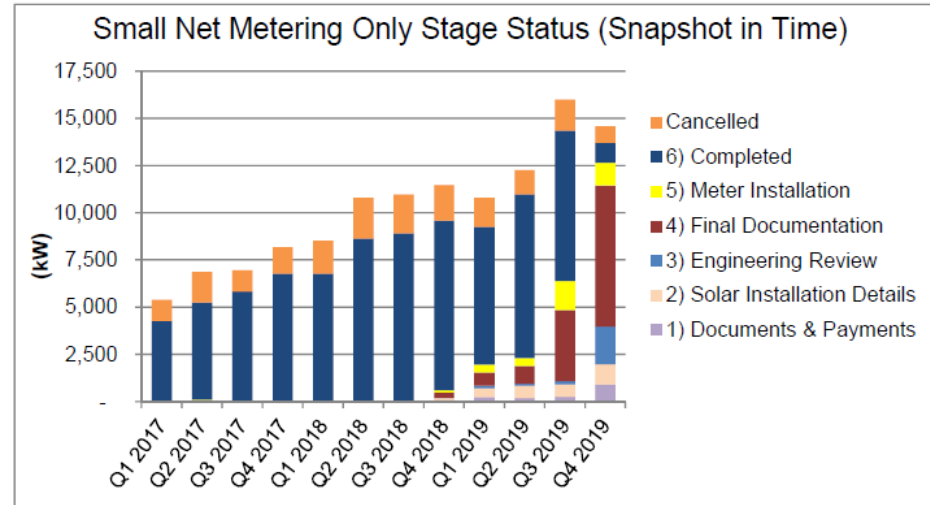
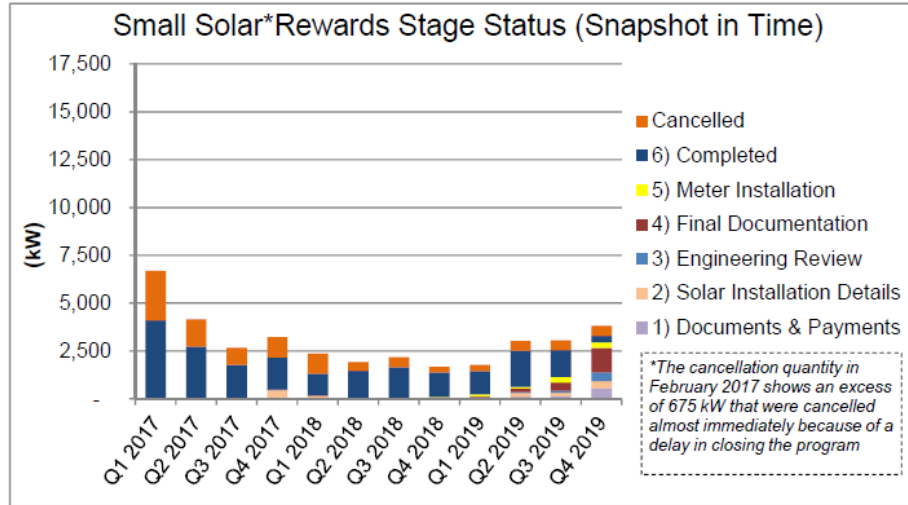
# Solar\*Rewards & Net Metering Only – Small

Q4 2020 was the 2<sup>nd</sup> largest quarter for Solar\*Rewards and Net Metering Only applications to date

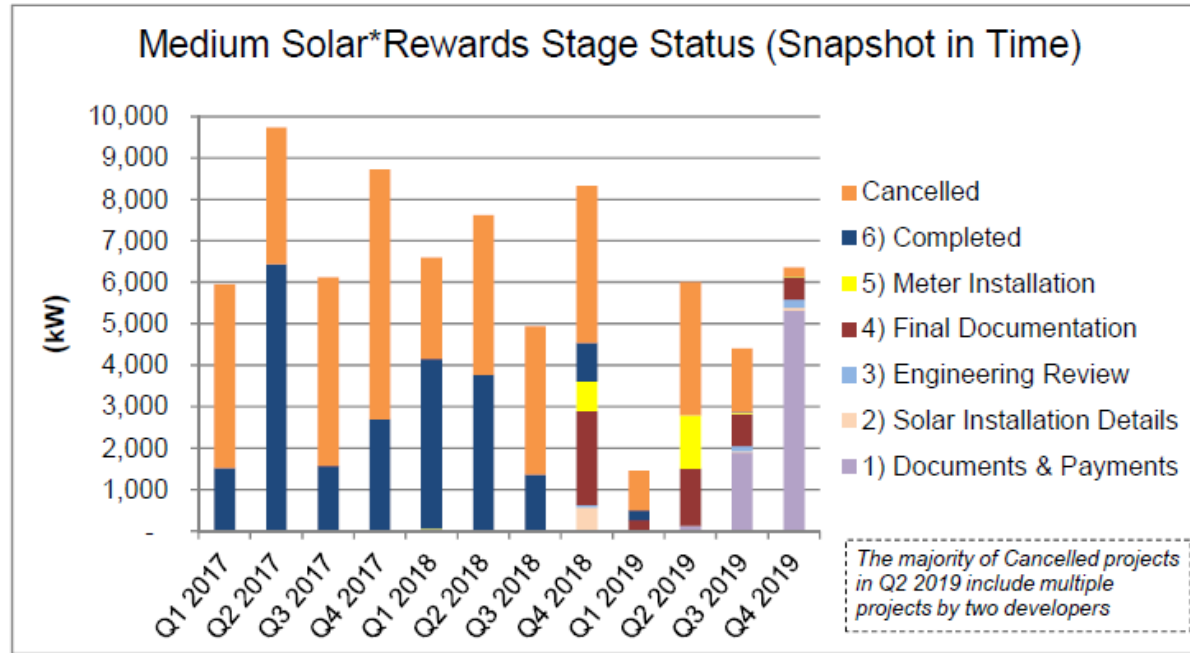




# Solar\*Rewards & Net Metering Only – Small Applications By Vintage

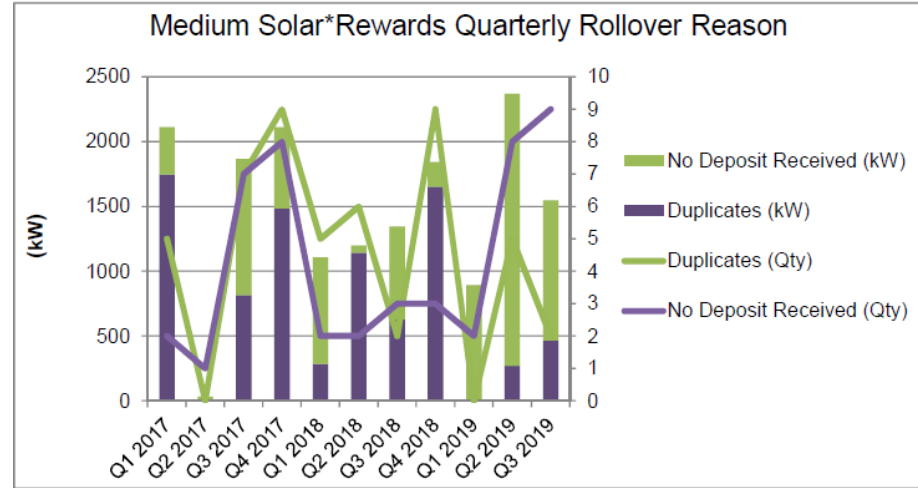
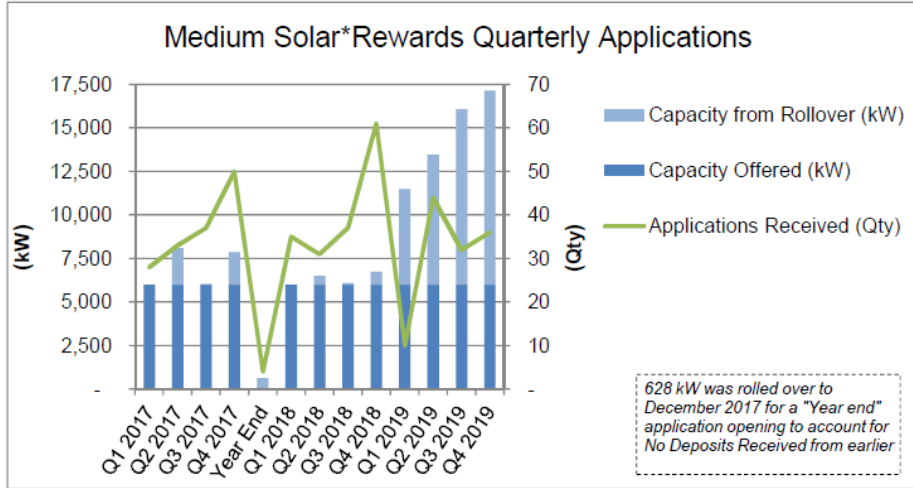


# Solar\*Rewards – Medium Applications by Vintage



# Solar\*Rewards – Medium Applications by Vintage

2019 rollover capacity accumulated quarter-to-quarter including net of rollover and new capacity



## On-site Storage - Operational Status

33 pre-approved battery “packages”, which then require line diagrams specific to the application

Status (as of March 10, 2020)	Project Count
Early Application (Installation Details, Documents, & Review)	23
Pending Installation (Final Documentation & Meter Installation)	30
Completed	414
Completed in 2019	211
<b>Totals</b>	<b>467</b>

# Solar\*Rewards Large RFP Capacity

Discussion: what portion of the annual program capacity should be reserved for smaller projects?

Solar*Rewards Large Capacity	Targeted Project Size	Targeted Capacity
20 MW	$\leq 1.5$ MW	20% of RFP

Pending PUC  
Decision

The Company retains right to not fulfill the full capacity if ample bids are not received at a reasonable price.

# Solar\*Rewards Large RFP Summary

The Company will increase transparency of bids by releasing an anonymized RFP bid response summary through an informational filing with the Commission within 30 days of the bid deadline:

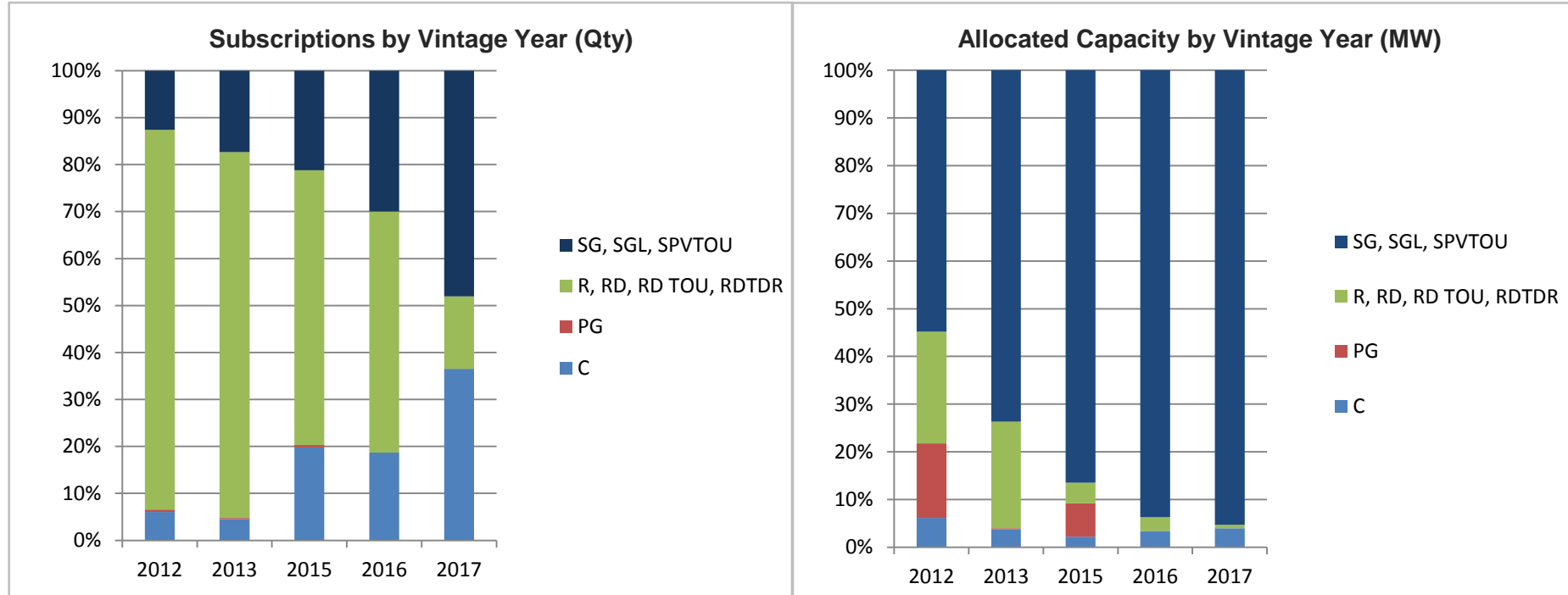
- average bid price
- number and capacity of bids received
- number of bidders

Pending PUC  
Decision



**Community Solar**

# Solar\*Rewards Community – Subscribers





# Development Status of Interconnection Requests

Capacity by Vintage (kW)	Pre-2016	2016	2017	2018	2019	Company Owned LI Gardens	Grand Total
Interconnection Agreement Signed	0	13	8	5.8	0	6	32.8
In design for an IA	0	0	4	2	4	-	10
In study/ review	0	0	2	4	33	-	39
No Capacity Notice – Move Eligible	0	0	0	2	2	-	4
Not Sited	0	0	4	6	2	-	12
Abandoned and Withdrawn	0	9.2	4.5	16	0	-	29.7
Active & Interconnected	47.9	36.3	9.1	0	0	-	93.3
Grand Total	47.9	58.5	31.5	35.8	41	6	220.7
Program Plan Minimum			15	15	15	6	
Program Plan Maximum*	78	60	32	37	42	6	

# Queue Info Proposed by COSSA

## Proposed Fields to be displayed, updated more frequently

- SRC Producer / Garden Operator
- Substation
- Name Plate Capacity (kW DC)
- AC Active Power Nameplate Rating (kW)
- Substation Queue Position
- Holistic Queue Position
- Interconnection Request Submitted
- Engineering Approval Date
- Study Start Date
- Study Due Date
- Facilities Study Start Date
- IA Delivered Date
- IA Executed Date
- Construction Start Date
- Expected ISD
- Garden Active Date

Authorization Form Collection Through 3/25  
for Publication Starting in April

One Per Developer



---

**2020 RFP**

# RFP Subscriber Targets

Pending PUC  
Decision

## Solar\*Rewards Community Annual Design

### 40 MW RFP

Capacity targets & scoring discussed with stakeholders  
Changes reviewed with PUC staff prior to RFP release  
Summary of bids received filed within 30 days

### 10 MW Standard Offer

Up to 500 kW  
Weighted average winning bid, plus adders

### 4 MW Company Offered Gardens

10% low-income capacity target

25% residential capacity target

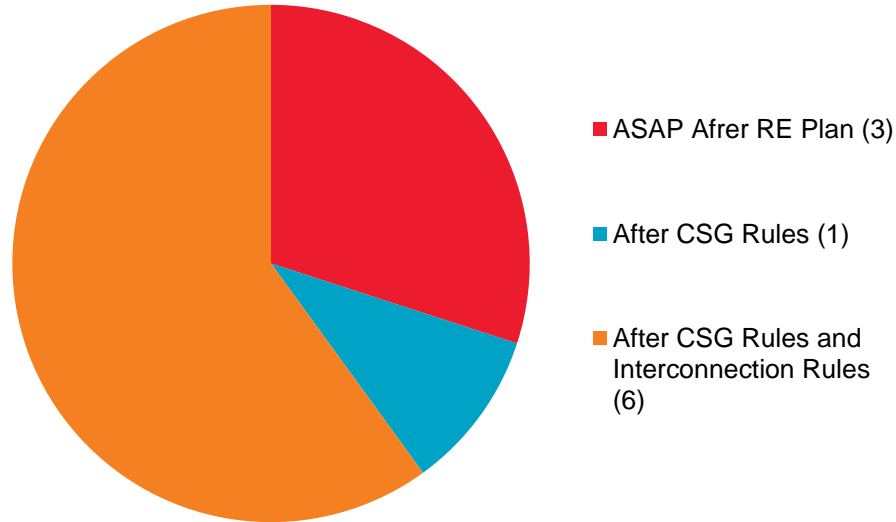
General  
2¢ adder

**Low Income**  
Incentive TBD  
Direct subscribers with  $\geq 25\%$  savings  
Union labor training

**Low Income**  
+ 2¢ adder for 100% direct-billed subscribers with  $\geq 25\%$  savings

# RFP Survey Results: Inconclusive

When should the 2020 Solar\*Rewards Community RFP be released?



Wide variety of respondents:

- Current SRC participants
- Past SRC participants
- New potential bidders

# Possible RFP Timing

- RE plan could be out early June, RFP in mid June
- 60 day RFP, 30 open and 30 review (award mid-August)
- Possible Split RFP, 30MW ASAP after RE Plan; 10MW after NOPRs close
- ASAP RFP Strictly targeted areas

# Potential Targeted Capacity RFP Concept

- We have Targeted Substations
- Breakdown of available MW on each feeder
- Map of capacity points in various locations across the feeder
- Updated Queue will help know if any targeted capacity is reserved since release of info

# Default Scoring from Proposed RE Plan

DEFAULT EVALUATION CRITERIA FOR GENERAL RFP SCORING		
Criteria	Scoring	Breakdown
Economic	50	Lowest score get 50, proportionally scored downward based on differential from lowest price
Developer Experience	20	Development plan + past performance, ranking worst (0) to best (20)
Subscriber Mix	10	100% = 10, 90% = 9, 75% = 7.5, etc.
Preparedness	10	Financial Securement (5), Site Securement (2.5), Permitting plan (2.5)
Additional Commitments	10	Based on robustness, additional subscriber commitments, subscriber proximity and innovation
Production, Geographic Location	Tie Breaker	
Community Based	+5	Additional points for community based projects



# Economic Scoring

- Lowest score get 50, proportionally scored downward based on differential from lowest price
- Formula =  $(\text{Highest bid-specific bid}) * (50/\text{range})$   
so for Bid # 8 we get  $(25 - (-5)) * (50/30)$

Bid #	Subscriber Organization	Garden Name	County	kW	RFP Bid Price	Yr1 price rank	Economic Score (50)
8	Developer B	Garden 8	Weld	2000	(\$5.00)	1	50
9	Developer C	Garden 9	Weld	2000	\$0.00	2	41.67
10	Developer A	Garden 10	Weld	2000	\$0.00	2	41.67
1	Developer A	Garden 1	Weld	2000	\$1.00	4	40
2	Developer B	Garden 2	Weld	2000	\$2.00	5	38.33
3	Developer C	Garden 3	Weld	2000	\$5.00	6	33.33
4	Developer A	Garden 4	Adams	2000	\$10.00	7	25
5	Developer B	Garden 5	Adams	2000	\$20.00	8	8.33
6	Developer C	Garden 6	Adams	2000	\$20.00	8	8.33
7	Developer A	Garden 7	Weld	2000	\$25.00	10	0

# Subscriber Mix

100% = 10, 90% = 9, 75% = 7.5, etc.

Bid #	Subscriber Organization	Garden Name	County	kW	Residential Commitment	Low Income Commitments	Subscriber Commitment Score (10)
1	Developer A	Garden 1	Weld	2000	50%	10%	6
2	Developer B	Garden 2	Weld	2000	50%	0%	5
3	Developer C	Garden 3	Weld	2000	90%	10%	10
4	Developer A	Garden 4	Adams	2000	10%	10%	2
5	Developer B	Garden 5	Adams	2000	10%	5%	1.5
6	Developer C	Garden 6	Adams	2000	10%	5%	1.5
7	Developer A	Garden 7	Weld	2000	25%	25%	5
8	Developer B	Garden 8	Weld	2000	100%	0%	10
9	Developer C	Garden 9	Weld	2000	20%	10%	3
10	Developer A	Garden 10	Weld	2000	20%	25%	4.5

# Preparedness

Financial Securement (5), Site Securement (2.5), Permitting plan (2.5)

Bid #	Subscriber Organization	Garden Name	County	kW	Financial Securement	Site Securement	Permitting	Preparedness Score (10)
1	Developer A	Garden 1	Weld	2000	Not Completed	Not Completed	Outlined	2.5
2	Developer B	Garden 2	Weld	2000	Not Completed	Not Completed	Outlined	2.5
3	Developer C	Garden 3	Weld	2000	Not Completed	Not Completed	Outlined	2.5
4	Developer A	Garden 4	Adams	2000	Self (possible)	Preliminary	Outlined	10
5	Developer B	Garden 5	Adams	2000	Completed	Not Completed	Outlined	7.5
6	Developer C	Garden 6	Adams	2000	Completed	Not Completed	Outlined	7.5
7	Developer A	Garden 7	Weld	2000	Not Completed	Preliminary	Outlined	5
8	Developer B	Garden 8	Weld	2000	Not Completed	Preliminary	Outlined	5
9	Developer C	Garden 9	Weld	2000	Not Completed	Preliminary	Outlined	5
10	Developer A	Garden 10	Weld	2000	Not Completed	Preliminary	Outlined	5

# Additional Commitments

Based on robustness, additional subscriber commitments, subscriber proximity and innovation

Bid #	Subscriber Organization	Garden Name	County	kW	Additional Commitments	Community commitments	Additional Commitments Score (10)
1	Developer A	Garden 1	Weld	2000	Educational tours; scholarship for renewable energy & internship	50 mile radius	10
2	Developer B	Garden 2	Weld	2000	Educational tours; scholarship for renewable energy & internship	N/A	8
3	Developer C	Garden 3	Weld	2000	Educational tours; scholarship for renewable energy & internship	N/A	8
4	Developer A	Garden 4	Adams	2000	Educational tours; scholarship for renewable energy & internship	N/A	8
5	Developer B	Garden 5	Adams	2000	None	N/A	0
6	Developer C	Garden 6	Adams	2000	None	N/A	0
7	Developer A	Garden 7	Weld	2000	None	N/A	0
8	Developer B	Garden 8	Weld	2000	Pollinator	In County Subscribers	6
9	Developer C	Garden 9	Weld	2000	None	In County Subscribers	4
10	Developer A	Garden 10	Weld	2000	Pollinator	N/A	2

# Developer Experience

Bid #	Subscriber Organization	Garden Name	County	kW	Developer Experience & Development Plan	SRC Performance (Months from award to meters 2MW project)	Developer Exp Score (20)
1	Developer A	Garden 1	Weld	2000	Slowest SRC CO developer, never completed 2MW under 30 months	32.55	5
2	Developer B	Garden 2	Weld	2000	Proven track record, Interconnected X MW under deadline	22.82	15
3	Developer C	Garden 3	Weld	2000	Fastest CSG Developer, never withdrawn a CSG	21.25	20
4	Developer A	Garden 4	Adams	2000	Slowest SRC CO developer, never completed 2MW under 30 months	32.55	5
5	Developer B	Garden 5	Adams	2000	Proven track record, Interconnected X MW under deadline	22.82	15
6	Developer C	Garden 6	Adams	2000	Fastest CSG Developer, never withdrawn a CSG	21.25	20
7	Developer A	Garden 7	Weld	2000	Slowest SRC CO developer, never completed 2MW under 30 months	32.55	5
8	Developer B	Garden 8	Weld	2000	Proven track record, Interconnected X MW under deadline	22.82	15
9	Developer D	Garden 9	Weld	2000	Proven track record, withdrawn projects, completed X MW	26.97	10
10	Developer A	Garden 10	Weld	2000	Slowest SRC CO developer, never completed 2MW under 30 months	32.55	5

- Projects with Xcel Energy or PUC Delays, including Capacity Notices removed or started clock from site move
- Developers without SRC CO experience reviewed based on permitting plan, understanding of program and performance outside of CO

# Discussion

- Scoring Criteria & Approach



## Wrap Up