

## Southwestern Public Service Company

## Fuel by Account Number

Line No.	Account	Oct-19	Nov-19	Dec-20	Jan-20	Feb-20	Mar-20
1	Natural Gas	\$ 4,265,304	\$ 5,800,244	\$ 8,078,335	\$ 8,001,867	\$ 6,516,710	\$ 4,099,825
2	Coal	7,859,909	11,251,568	9,896,605	4,668,741	5,827,148	4,007,860
3	Coal - Semi Variable	2,569,146	2,738,338	3,143,141	3,441,042	2,741,115	2,700,711
4	Oil	(1,713)	20,352	481	368	37,220	-
5	Coal Ash Sales	-	-	-	-	-	-
6	Fuel Handling	-	-	-	-	-	-
7	Fuel Procurement - Semi Variable	-	-	-	-	-	-
8	<b>Total Account 501</b>	<b>\$ 14,692,647</b>	<b>\$ 19,810,502</b>	<b>\$ 21,118,562</b>	<b>\$ 16,112,018</b>	<b>\$ 15,122,194</b>	<b>\$ 10,808,396</b>
	<b>Account 547</b>						
9	Natural Gas	\$ 3,670,225	\$ 1,560,059	\$ 1,304,124	\$ 833,561	\$ 744,815	\$ 481,375
10	Oil	-	-	-	-	-	-
11	<b>Total Account 547</b>	<b>\$ 3,670,225</b>	<b>\$ 1,560,059</b>	<b>\$ 1,304,124</b>	<b>\$ 833,561</b>	<b>\$ 744,815</b>	<b>\$ 481,375</b>
12	<b>Total Test Year</b>	<b>\$ 18,362,873</b>	<b>\$ 21,370,561</b>	<b>\$ 22,422,686</b>	<b>\$ 16,945,579</b>	<b>\$ 15,867,009</b>	<b>\$ 11,289,771</b>

Notes: All above expenses are variable unless indicated otherwise.

As discussed in the testimony of William A. Grant, Southwestern Public Service Company ("SPS") has not filed a fuel reconciliation with its current base rate case in accordance with the Order in Project No. 41905 and 16 Tex. Admin. Code § 25.236 as revised in that project.

Sum of 1's	\$	110,839,005	I-2
Sum of 2's	\$	99,449,682	I-2
Sum of 3's	\$	71,907	I-2
<b>Total</b>	<b>\$</b>	<b>210,360,594</b>	<b>I-2</b>

Southwestern Public Service Company

Fuel by Account Number

	Apr-20	May-20	Jun-20	Jul-20	Aug-20	Sep-20	Total	
\$	4,178,533	\$ 7,460,456	\$ 7,468,015	\$ 10,186,423	\$ 9,378,116	\$ 8,818,318	\$ 84,252,148	1
	3,745,469	7,238,463	7,329,487	14,686,282	15,108,357	7,829,793	99,449,682	2
	2,803,502	2,515,492	3,079,546	2,189,596	2,843,756	2,557,740	33,323,125	3
	-	7,424	7,096	253	253	172	71,907	
	-	-	-	-	-	-	-	
	-	-	-	-	-	-	-	
	-	-	-	-	-	-	-	
\$	10,727,504	\$ 17,221,835	\$ 17,884,144	\$ 27,062,555	\$ 27,330,483	\$ 19,206,022	\$ 217,096,862	
	Apr-20	May-20	Jun-20	Jul-20	Aug-20	Sep-20	Total	
\$	247,659	\$ 291,408	\$ 3,198,564	\$ 5,988,681	\$ 5,193,201	\$ 3,073,185	\$ 26,586,858	1
	-	-	-	-	-	-	-	
\$	247,659	\$ 291,408	\$ 3,198,564	\$ 5,988,681	\$ 5,193,201	\$ 3,073,185	\$ 26,586,858	
\$	10,975,163	\$ 17,513,243	\$ 21,082,707	\$ 33,051,236	\$ 32,523,684	\$ 22,279,208	\$ 243,683,720	

Southwestern Public Service Company

Fuel Burned

Total Gas - Cunningham

Line No.	MONTH		(1) UNADJUSTED TEST YEAR	(2) ADJUSTMENTS	(3) ADJUSTED TEST YEAR
1	October 2019	\$	92,735	-	92,735
2		MMBTU	47,836	-	47,836
3		\$/MMBTU	1.94	-	2
4	November 2019	\$	199,035	-	199,035
5		MMBTU	136,933	-	136,933
6		\$/MMBTU	1.45	-	1
7	December 2019	\$	1,077,394	-	1,077,394
8		MMBTU	679,340	-	679,340
9		\$/MMBTU	1.59	-	2
10	January 2020	\$	955,258	-	955,258
11		MMBTU	815,876	-	815,876
12		\$/MMBTU	1.17	-	1
13	February 2020	\$	518,303	-	518,303
14		MMBTU	553,037	-	553,037
15		\$/MMBTU	0.94	-	1
16	March 2020	\$	337,321	-	337,321
17		MMBTU	584,729	-	584,729
18		\$/MMBTU	0.58	-	1
19	April 2020	\$	234,700	-	234,700
20		MMBTU	308,317	-	308,317
21		\$/MMBTU	0.76	-	1
22	May 2020	\$	652,516	-	652,516
23		MMBTU	366,886	-	366,886
24		\$/MMBTU	1.78	-	2
25	June 2020	\$	1,136,695	-	1,136,695
26		MMBTU	647,967	-	647,967
27		\$/MMBTU	1.75	-	2
28	July 2020	\$	1,279,953	-	1,279,953
29		MMBTU	790,422	-	790,422
30		\$/MMBTU	1.62	-	2
31	August 2020	\$	1,469,842	-	1,469,842
32		MMBTU	898,436	-	898,436
33		\$/MMBTU	1.64	-	2
34	September 2020	\$	1,563,214	-	1,563,214
35		MMBTU	864,001	-	864,001
36		\$/MMBTU	1.81	-	2
37					
38	<b>Totals</b>	<b>\$</b>	<b>9,516,964</b>	<b>-</b>	<b>9,516,964</b>
39		<b>MMBTU</b>	<b>6,693,780</b>	<b>-</b>	<b>6,693,780</b>
40		<b>\$/MMBTU</b>	<b>1.42</b>	<b>-</b>	<b>1.42</b>

**Note:** As discussed in the testimony of Southwestern Public Service Company ("SPS") witness William A. Grant, SPS has not filed a fuel reconciliation with its current base rate case in accordance with the Order in Project No. 41905 and 16 Tex. Admin. Code § 25.236 ("TAC") as revised in that project. Additionally, SPS is not proposing a new fuel factor under 16 TAC § 25.237 and therefore, rate year data is not applicable.

These amounts also include fuel and handling costs paid to the supplier.

Southwestern Public Service Company

Fuel Burned

Total Gas - Harrington

Line No.	MONTH		(1) UNADJUSTED TEST YEAR	(2) ADJUSTMENTS	(3) ADJUSTED TEST YEAR
1	October 2019	\$	90,365	-	90,365
2		MMBTU	89,053	-	89,053
3		\$/MMBTU	1.01	-	1
4	November 2019	\$	98,274	-	98,274
5		MMBTU	62,674	-	62,674
6		\$/MMBTU	1.57	-	2
7	December 2019	\$	97,413	-	97,413
8		MMBTU	70,119	-	70,119
9		\$/MMBTU	1.39	-	1
10	January 2020	\$	76,813	-	76,813
11		MMBTU	69,517	-	69,517
12		\$/MMBTU	1.10	-	1
13	February 2020	\$	50,043	-	50,043
14		MMBTU	64,920	-	64,920
15		\$/MMBTU	0.77	-	1
16	March 2020	\$	26,185	-	26,185
17		MMBTU	39,734	-	39,734
18		\$/MMBTU	0.66	-	1
19	April 2020	\$	25,434	-	25,434
20		MMBTU	46,856	-	46,856
21		\$/MMBTU	0.54	-	1
22	May 2020	\$	78,695	-	78,695
23		MMBTU	44,160	-	44,160
24		\$/MMBTU	1.78	-	2
25	June 2020	\$	154,119	-	154,119
26		MMBTU	88,157	-	88,157
27		\$/MMBTU	1.75	-	2
28	July 2020	\$	31,939	-	31,939
29		MMBTU	21,395	-	21,395
30		\$/MMBTU	1.49	-	1
31	August 2020	\$	65,853	-	65,853
32		MMBTU	41,709	-	41,709
33		\$/MMBTU	1.58	-	2
34	September 2020	\$	42,381	-	42,381
35		MMBTU	23,187	-	23,187
36		\$/MMBTU	1.83	-	2
37					
38	Totals	\$	837,514	-	837,514
39		MMBTU	661,482	-	661,482
40		\$/MMBTU	1.27	-	1.27

Southwestern Public Service Company

Fuel Burned

			Total Gas - Jones		
Line No.	MONTH		(1) UNADJUSTED TEST YEAR	(2) ADJUSTMENTS	(3) ADJUSTED TEST YEAR
1	October 2019	\$	1,774,133	-	1,774,133
2		MMBTU	1,036,297	-	1,036,297
3		\$/MMBTU	1.71	-	2
4	November 2019	\$	2,088,069	-	2,088,069
5		MMBTU	1,490,629	-	1,490,629
6		\$/MMBTU	1.40	-	1
7	December 2019	\$	3,330,227	-	3,330,227
8		MMBTU	2,119,952	-	2,119,952
9		\$/MMBTU	1.57	-	2
10	January 2020	\$	2,613,960	-	2,613,960
11		MMBTU	2,353,119	-	2,353,119
12		\$/MMBTU	1.11	-	1
13	February 2020	\$	2,045,119	-	2,045,119
14		MMBTU	2,556,794	-	2,556,794
15		\$/MMBTU	0.80	-	1
16	March 2020	\$	1,073,657	-	1,073,657
17		MMBTU	1,807,337	-	1,807,337
18		\$/MMBTU	0.59	-	1
19	April 2020	\$	1,258,212	-	1,258,212
20		MMBTU	1,976,344	-	1,976,344
21		\$/MMBTU	0.64	-	1
22	May 2020	\$	2,444,171	-	2,444,171
23		MMBTU	1,366,169	-	1,366,169
24		\$/MMBTU	1.79	-	2
25	June 2020	\$	2,558,971	-	2,558,971
26		MMBTU	1,357,583	-	1,357,583
27		\$/MMBTU	1.88	-	2
28	July 2020	\$	3,658,700	-	3,658,700
29		MMBTU	2,306,134	-	2,306,134
30		\$/MMBTU	1.59	-	2
31	August 2020	\$	3,544,697	-	3,544,697
32		MMBTU	2,199,756	-	2,199,756
33		\$/MMBTU	1.61	-	2
34	September 2020	\$	3,262,135	-	3,262,135
35		MMBTU	1,800,398	-	1,800,398
36		\$/MMBTU	1.81	-	2
37					
38	Totals	\$	29,652,051	-	29,652,051
39		MMBTU	22,370,512	-	22,370,512
40		\$/MMBTU	1.33	-	1.33

Southwestern Public Service Company

Fuel Burned

Total Gas - Moore County					
Line No.	MONTH		(1) UNADJUSTED TEST YEAR	(2) ADJUSTMENTS	(3) ADJUSTED TEST YEAR
1	October 2019	\$	-	-	-
2		MMBTU	-	-	-
3		\$/MMBTU	-	-	-
4	November 2019	\$	-	-	-
5		MMBTU	-	-	-
6		\$/MMBTU	-	-	-
7	December 2019	\$	-	-	-
8		MMBTU	-	-	-
9		\$/MMBTU	-	-	-
10	January 2020	\$	-	-	-
11		MMBTU	-	-	-
12		\$/MMBTU	-	-	-
13	February 2020	\$	-	-	-
14		MMBTU	-	-	-
15		\$/MMBTU	-	-	-
16	March 2020	\$	-	-	-
17		MMBTU	-	-	-
18		\$/MMBTU	-	-	-
19	April 2020	\$	-	-	-
20		MMBTU	-	-	-
21		\$/MMBTU	-	-	-
22	May 2020	\$	-	-	-
23		MMBTU	-	-	-
24		\$/MMBTU	-	-	-
25	June 2020	\$	-	-	-
26		MMBTU	-	-	-
27		\$/MMBTU	-	-	-
28	July 2020	\$	-	-	-
29		MMBTU	-	-	-
30		\$/MMBTU	-	-	-
31	August 2020	\$	-	-	-
32		MMBTU	-	-	-
33		\$/MMBTU	-	-	-
34	September 2020	\$	-	-	-
35		MMBTU	-	-	-
36		\$/MMBTU	-	-	-
37					
38	Totals	\$	-	-	-
39		MMBTU	-	-	-
40		\$/MMBTU	-	-	-

Southwestern Public Service Company

Fuel Burned

Total Gas - Maddox					
Line No.	MONTH		(1) UNADJUSTED TEST YEAR	(2) ADJUSTMENTS	(3) ADJUSTED TEST YEAR
1	October 2019	\$	753,878	-	753,878
2		MMBTU	409,793	-	409,793
3		\$/MMBTU	1.84	-	2
4	November 2019	\$	595,309	-	595,309
5		MMBTU	429,741	-	429,741
6		\$/MMBTU	1.39	-	1
7	December 2019	\$	365,106	-	365,106
8		MMBTU	225,983	-	225,983
9		\$/MMBTU	1.62	-	2
10	January 2020	\$	648,248	-	648,248
11		MMBTU	548,946	-	548,946
12		\$/MMBTU	1.18	-	1
13	February 2020	\$	575,382	-	575,382
14		MMBTU	607,813	-	607,813
15		\$/MMBTU	0.95	-	1
16	March 2020	\$	427,397	-	427,397
17		MMBTU	741,508	-	741,508
18		\$/MMBTU	0.58	-	1
19	April 2020	\$	415,908	-	415,908
20		MMBTU	554,116	-	554,116
21		\$/MMBTU	0.75	-	1
22	May 2020	\$	587,132	-	587,132
23		MMBTU	317,954	-	317,954
24		\$/MMBTU	1.85	-	2
25	June 2020	\$	487,452	-	487,452
26		MMBTU	284,468	-	284,468
27		\$/MMBTU	1.71	-	2
28	July 2020	\$	1,010,832	-	1,010,832
29		MMBTU	622,489	-	622,489
30		\$/MMBTU	1.62	-	2
31	August 2020	\$	820,308	-	820,308
32		MMBTU	497,814	-	497,814
33		\$/MMBTU	1.65	-	2
34	September 2020	\$	736,101	-	736,101
35		MMBTU	406,995	-	406,995
36		\$/MMBTU	1.81	-	2
37					
38	Totals	\$	7,423,053	-	7,423,053
39		MMBTU	5,647,621	-	5,647,621
40		\$/MMBTU	1.31	-	1.31

Southwestern Public Service Company

Fuel Burned

Total Gas - Nichols					
Line No.	MONTH		(1) UNADJUSTED TEST YEAR	(2) ADJUSTMENTS	(3) ADJUSTED TEST YEAR
1	October 2019	\$	264,935	-	264,935
2		MMBTU	263,422	-	263,422
3		\$/MMBTU	1.01	-	1
4	November 2019	\$	1,436,029	-	1,436,029
5		MMBTU	955,077	-	955,077
6		\$/MMBTU	1.50	-	2
7	December 2019	\$	2,389,307	-	2,389,307
8		MMBTU	1,655,631	-	1,655,631
9		\$/MMBTU	1.44	-	1
10	January 2020	\$	2,189,886	-	2,189,886
11		MMBTU	1,751,574	-	1,751,574
12		\$/MMBTU	1.25	-	1
13	February 2020	\$	1,975,241	-	1,975,241
14		MMBTU	1,932,656	-	1,932,656
15		\$/MMBTU	1.02	-	1
16	March 2020	\$	1,446,059	-	1,446,059
17		MMBTU	1,872,536	-	1,872,536
18		\$/MMBTU	0.77	-	1
19	April 2020	\$	1,544,036	-	1,544,036
20		MMBTU	2,069,444	-	2,069,444
21		\$/MMBTU	0.75	-	1
22	May 2020	\$	2,081,725	-	2,081,725
23		MMBTU	1,141,844	-	1,141,844
24		\$/MMBTU	1.82	-	2
25	June 2020	\$	1,820,642	-	1,820,642
26		MMBTU	1,029,371	-	1,029,371
27		\$/MMBTU	1.77	-	2
28	July 2020	\$	2,496,306	-	2,496,306
29		MMBTU	1,622,038	-	1,622,038
30		\$/MMBTU	1.54	-	2
31	August 2020	\$	2,343,213	-	2,343,213
32		MMBTU	1,501,261	-	1,501,261
33		\$/MMBTU	1.56	-	2
34	September 2020	\$	2,108,632	-	2,108,632
35		MMBTU	1,220,513	-	1,220,513
36		\$/MMBTU	1.73	-	2
37					
38	Totals	\$	22,096,011	-	22,096,011
39		MMBTU	17,015,366	-	17,015,366
40		\$/MMBTU	1.30	-	1.30

Southwestern Public Service Company

Fuel Burned

Total Gas - Plant X					
Line No.	MONTH		(1) UNADJUSTED TEST YEAR	(2) ADJUSTMENTS	(3) ADJUSTED TEST YEAR
1	October 2019	\$	1,206,119	-	1,206,119
2		MMBTU	754,520	-	754,520
3		\$/MMBTU	1.60	-	2
4	November 2019	\$	1,323,826	-	1,323,826
5		MMBTU	893,316	-	893,316
6		\$/MMBTU	1.48	-	1
7	December 2019	\$	799,191	-	799,191
8		MMBTU	554,439	-	554,439
9		\$/MMBTU	1.44	-	1
10	January 2020	\$	1,439,398	-	1,439,398
11		MMBTU	1,324,290	-	1,324,290
12		\$/MMBTU	1.09	-	1
13	February 2020	\$	1,307,313	-	1,307,313
14		MMBTU	1,326,562	-	1,326,562
15		\$/MMBTU	0.99	-	1
16	March 2020	\$	772,481	-	772,481
17		MMBTU	1,234,780	-	1,234,780
18		\$/MMBTU	0.63	-	1
19	April 2020	\$	676,583	-	676,583
20		MMBTU	902,251	-	902,251
21		\$/MMBTU	0.75	-	1
22	May 2020	\$	1,518,205	-	1,518,205
23		MMBTU	850,481	-	850,481
24		\$/MMBTU	1.79	-	2
25	June 2020	\$	1,199,379	-	1,199,379
26		MMBTU	790,410	-	790,410
27		\$/MMBTU	1.52	-	2
28	July 2020	\$	1,583,817	-	1,583,817
29		MMBTU	1,066,093	-	1,066,093
30		\$/MMBTU	1.49	-	1
31	August 2020	\$	463,254	-	463,254
32		MMBTU	306,519	-	306,519
33		\$/MMBTU	1.51	-	2
34	September 2020	\$	1,407,046	-	1,407,046
35		MMBTU	818,049	-	818,049
36		\$/MMBTU	1.72	-	2
37					
38	Totals	\$	<u>13,696,612</u>	<u>-</u>	<u>13,696,612</u>
39		MMBTU	<u>10,821,711</u>	<u>-</u>	<u>10,821,711</u>
40		\$/MMBTU	<u>1.27</u>	<u>-</u>	<u>1.27</u>

Southwestern Public Service Company

Fuel Burned

Total Gas - Tolk

Line No.	MONTH		(1) UNADJUSTED TEST YEAR	(2) ADJUSTMENTS	(3) ADJUSTED TEST YEAR
1	October 2019	\$	83,140	-	83,139.63
2		MMBTU	71,630	-	71,629.92
3		\$/MMBTU	1.16	-	1.16
4	November 2019	\$	43,260	-	43,260.25
5		MMBTU	24,767	-	24,767.00
6		\$/MMBTU	1.75	-	1.75
7	December 2019	\$	36,140	-	36,140.19
8		MMBTU	26,230	-	26,230.24
9		\$/MMBTU	1.38	-	1.38
10	January 2020	\$	78,304	-	78,303.98
11		MMBTU	62,024	-	62,023.70
12		\$/MMBTU	1.26	-	1.26
13	February 2020	\$	45,309	-	45,309.13
14		MMBTU	54,957	-	54,957.25
15		\$/MMBTU	0.82	-	0.82
16	March 2020	\$	16,726	-	16,725.70
17		MMBTU	24,950	-	24,950.09
18		\$/MMBTU	0.67	-	0.67
19	April 2020	\$	23,661	-	23,660.68
20		MMBTU	46,353	-	46,352.68
21		\$/MMBTU	0.51	-	0.51
22	May 2020	\$	98,012	-	98,011.55
23		MMBTU	55,747	-	55,747.00
24		\$/MMBTU	1.76	-	1.76
25	June 2020	\$	110,758	-	110,757.99
26		MMBTU	60,108	-	60,108.22
27		\$/MMBTU	1.84	-	1.84
28	July 2020	\$	124,875	-	124,874.93
29		MMBTU	79,581	-	79,581.35
30		\$/MMBTU	1.57	-	1.57
31	August 2020	\$	670,950	-	670,950.13
32		MMBTU	428,044	-	428,044.00
33		\$/MMBTU	1.57	-	1.57
34	September 2020	\$	(301,191)	-	(301,191.49)
35		MMBTU	(191,162)	-	(191,162.22)
36		\$/MMBTU	1.58	-	1.58
37					
38	Totals	\$	1,029,943	-	1,029,943
39		MMBTU	743,229	-	743,229
40		\$/MMBTU	1.39	-	1.39

Southwestern Public Service Company

Fuel Burned

Total Gas - Carlsbad GT

Line No.	MONTH		(1) UNADJUSTED TEST YEAR	(2) ADJUSTMENTS	(3) ADJUSTED TEST YEAR
1	October 2019	\$	23	-	23
2		MMBTU	-	-	-
3		\$/MMBTU	-	-	-
4	November 2019	\$	(23)	-	(23)
5		MMBTU	-	-	-
6		\$/MMBTU	-	-	-
7	December 2019	\$	-	-	-
8		MMBTU	-	-	-
9		\$/MMBTU	-	-	-
10	January 2020	\$	-	-	-
11		MMBTU	-	-	-
12		\$/MMBTU	-	-	-
13	February 2020	\$	-	-	-
14		MMBTU	-	-	-
15		\$/MMBTU	-	-	-
16	March 2020	\$	-	-	-
17		MMBTU	-	-	-
18		\$/MMBTU	-	-	-
19	April 2020	\$	-	-	-
20		MMBTU	-	-	-
21		\$/MMBTU	-	-	-
22	May 2020	\$	-	-	-
23		MMBTU	-	-	-
24		\$/MMBTU	-	-	-
25	June 2020	\$	-	-	-
26		MMBTU	-	-	-
27		\$/MMBTU	-	-	-
28	July 2020	\$	-	-	-
29		MMBTU	-	-	-
30		\$/MMBTU	-	-	-
31	August 2020	\$	-	-	-
32		MMBTU	-	-	-
33		\$/MMBTU	-	-	-
34	September 2020	\$	-	-	-
35		MMBTU	-	-	-
36		\$/MMBTU	-	-	-
37					
38	Totals	\$	-	-	-
39		MMBTU	-	-	-
40		\$/MMBTU	-	-	-

Southwestern Public Service Company

Fuel Burned

Total Gas - Cunningham GT

Line No.	MONTH		(1) UNADJUSTED TEST YEAR	(2) ADJUSTMENTS	(3) ADJUSTED TEST YEAR
1	October 2019	\$	1,899,841	-	1,899,841
2		MMBTU	1,038,249	-	1,038,249
3		\$/MMBTU	1.83	-	2
4	November 2019	\$	1,004,424	-	1,004,424
5		MMBTU	711,314	-	711,314
6		\$/MMBTU	1.41	-	1
7	December 2019	\$	863,710	-	863,710
8		MMBTU	541,188	-	541,188
9		\$/MMBTU	1.60	-	2
10	January 2020	\$	333,235	-	333,235
11		MMBTU	289,397	-	289,397
12		\$/MMBTU	1.15	-	1
13	February 2020	\$	603,725	-	603,725
14		MMBTU	637,502	-	637,502
15		\$/MMBTU	0.95	-	1
16	March 2020	\$	198,856	-	198,856
17		MMBTU	343,154	-	343,154
18		\$/MMBTU	0.58	-	1
19	April 2020	\$	(3,556)	-	(3,556)
20		MMBTU	(19,583)	-	(19,583)
21		\$/MMBTU	0.18	-	0
22	May 2020	\$	0	-	0
23		MMBTU	0	-	0
24		\$/MMBTU	0.00	-	0
25	June 2020	\$	609,251	-	609,251
26		MMBTU	340,029	-	340,029
27		\$/MMBTU	1.79	-	2
28	July 2020	\$	2,365,075	-	2,365,075
29		MMBTU	1,443,002	-	1,443,002
30		\$/MMBTU	1.64	-	2
31	August 2020	\$	2,001,837	-	2,001,837
32		MMBTU	1,219,447	-	1,219,447
33		\$/MMBTU	1.64	-	2
34	September 2020	\$	1,990,974	-	1,990,974
35		MMBTU	1,100,748	-	1,100,748
36		\$/MMBTU	1.81	-	2
37					
38	Totals	\$	11,867,372	-	11,867,372
39		MMBTU	7,644,445	-	7,644,445
40		\$/MMBTU	1.55	-	1.55

Southwestern Public Service Company

Fuel Burned

Total Gas - Maddox GT

Line No.	MONTH		(1) UNADJUSTED TEST YEAR	(2) ADJUSTMENTS	(3) ADJUSTED TEST YEAR
1	October 2019	\$	718,928	-	718,928
2		MMBTU	395,692	-	395,692
3		\$/MMBTU	1.82	-	2
4	November 2019	\$	394,950	-	394,950
5		MMBTU	265,351	-	265,351
6		\$/MMBTU	1.49	-	1
7	December 2019	\$	42,371	-	42,371
8		MMBTU	27,282	-	27,282
9		\$/MMBTU	1.55	-	2
10	January 2020	\$	469,076	-	469,076
11		MMBTU	404,171	-	404,171
12		\$/MMBTU	1.16	-	1
13	February 2020	\$	137,202	-	137,202
14		MMBTU	149,669	-	149,669
15		\$/MMBTU	0.92	-	1
16	March 2020	\$	98,314	-	98,314
17		MMBTU	170,415	-	170,415
18		\$/MMBTU	0.58	-	1
19	April 2020	\$	72,522	-	72,522
20		MMBTU	100,618	-	100,618
21		\$/MMBTU	0.72	-	1
22	May 2020	\$	158,705	-	158,705
23		MMBTU	93,922	-	93,922
24		\$/MMBTU	1.69	-	2
25	June 2020	\$	290,868	-	290,868
26		MMBTU	165,521	-	165,521
27		\$/MMBTU	1.76	-	2
28	July 2020	\$	443,691	-	443,691
29		MMBTU	269,987	-	269,987
30		\$/MMBTU	1.64	-	2
31	August 2020	\$	514,754	-	514,754
32		MMBTU	315,400	-	315,400
33		\$/MMBTU	1.63	-	2
34	September 2020	\$	393,689	-	393,689
35		MMBTU	217,948	-	217,948
36		\$/MMBTU	1.81	-	2
37					
38	Totals	\$	3,735,069	-	3,735,069
39		MMBTU	2,575,977	-	2,575,977
40		\$/MMBTU	1.45	-	1.45

Southwestern Public Service Company

Fuel Burned

Total Gas - Jones GT

Line No.	MONTH		(1) UNADJUSTED TEST YEAR	(2) ADJUSTMENTS	(3) ADJUSTED TEST YEAR
1	October 2019	\$	1,051,456	-	1,051,456
2		MMBTU	1,069,292	-	1,069,292
3		\$/MMBTU	0.98	-	1
4	November 2019	\$	177,128	-	177,128
5		MMBTU	69,081	-	69,081
6		\$/MMBTU	2.56	-	3
7	December 2019	\$	381,601	-	381,601
8		MMBTU	270,737	-	270,737
9		\$/MMBTU	1.41	-	1
10	January 2020	\$	31,250	-	31,250
11		MMBTU	13,599	-	13,599
12		\$/MMBTU	2.30	-	2
13	February 2020	\$	3,888	-	3,888
14		MMBTU	5,176	-	5,176
15		\$/MMBTU	0.75	-	1
16	March 2020	\$	184,205	-	184,205
17		MMBTU	354,334	-	354,334
18		\$/MMBTU	0.52	-	1
19	April 2020	\$	178,693	-	178,693
20		MMBTU	316,797	-	316,797
21		\$/MMBTU	0.56	-	1
22	May 2020	\$	132,704	-	132,704
23		MMBTU	49,746	-	49,746
24		\$/MMBTU	2.67	-	3
25	June 2020	\$	2,298,444	-	2,298,444
26		MMBTU	1,396,463	-	1,396,463
27		\$/MMBTU	1.65	-	2
28	July 2020	\$	3,179,915	-	3,179,915
29		MMBTU	2,039,858	-	2,039,858
30		\$/MMBTU	1.56	-	2
31	August 2020	\$	2,676,610	-	2,676,610
32		MMBTU	1,711,794	-	1,711,794
33		\$/MMBTU	1.56	-	2
34	September 2020	\$	688,523	-	688,523
35		MMBTU	407,235	-	407,235
36		\$/MMBTU	1.69	-	2
37					
38	Totals	\$	10,984,416	-	10,984,416
39		MMBTU	7,704,112	-	7,704,112
40		\$/MMBTU	1.43	-	1.43

Southwestern Public Service Company

Fuel Burned

Total Coal - Harrington

Line No.	MONTH		(1) UNADJUSTED TEST YEAR	(2) ADJUSTMENTS	(3) ADJUSTED TEST YEAR
1	October 2019	\$	4,279,051	-	4,279,051
2		MMBTU	2,668,919	-	2,668,919
3		\$/MMBTU	1.60	-	2
4	November 2019	\$	5,395,724	-	5,395,724
5		MMBTU	3,381,765	-	3,381,765
6		\$/MMBTU	1.60	-	2
7	December 2019	\$	5,314,486	-	5,314,486
8		MMBTU	3,072,766	-	3,072,766
9		\$/MMBTU	1.73	-	2
10	January 2020	\$	2,646,442	-	2,646,442
11		MMBTU	2,389,575	-	2,389,575
12		\$/MMBTU	1.11	-	1
13	February 2020	\$	2,776,529	-	2,776,529
14		MMBTU	1,028,376	-	1,028,376
15		\$/MMBTU	2.70	-	3
16	March 2020	\$	2,571,066	-	2,571,066
17		MMBTU	1,593,875	-	1,593,875
18		\$/MMBTU	1.61	-	2
19	April 2020	\$	1,965,651	-	1,965,651
20		MMBTU	1,210,612	-	1,210,612
21		\$/MMBTU	1.62	-	2
22	May 2020	\$	3,277,888	-	3,277,888
23		MMBTU	2,021,794	-	2,021,794
24		\$/MMBTU	1.62	-	2
25	June 2020	\$	4,429,919	-	4,429,919
26		MMBTU	2,743,070	-	2,743,070
27		\$/MMBTU	1.61	-	2
28	July 2020	\$	8,059,208	-	8,059,208
29		MMBTU	5,010,156	-	5,010,156
30		\$/MMBTU	1.61	-	2
31	August 2020	\$	8,132,036	-	8,132,036
32		MMBTU	5,130,963	-	5,130,963
33		\$/MMBTU	1.58	-	2
34	September 2020	\$	5,326,366	-	5,326,366
35		MMBTU	3,376,373	-	3,376,373
36		\$/MMBTU	1.58	-	2
37					
38	Totals	\$	54,174,366	-	54,174,366
39		MMBTU	33,628,246	-	33,628,246
40		\$/MMBTU	1.61	-	1.61

Southwestern Public Service Company

Fuel Burned

Total Coal - Tolk

Line No.	MONTH		(1) UNADJUSTED TEST YEAR	(2) ADJUSTMENTS	(3) ADJUSTED TEST YEAR
1	October 2019	\$	3,580,858	-	3,580,858
2		MMBTU	1,954,791	-	1,954,791
3		\$/MMBTU	1.83	-	2
4	November 2019	\$	5,855,844	-	5,855,844
5		MMBTU	3,188,731	-	3,188,731
6		\$/MMBTU	1.84	-	2
7	December 2019	\$	4,582,119	-	4,582,119
8		MMBTU	2,507,826	-	2,507,826
9		\$/MMBTU	1.83	-	2
10	January 2020	\$	2,022,299	-	2,022,299
11		MMBTU	1,195,538	-	1,195,538
12		\$/MMBTU	1.69	-	2
13	February 2020	\$	3,050,619	-	3,050,619
14		MMBTU	1,649,621	-	1,649,621
15		\$/MMBTU	1.85	-	2
16	March 2020	\$	1,436,794	-	1,436,794
17		MMBTU	787,791	-	787,791
18		\$/MMBTU	1.82	-	2
19	April 2020	\$	1,779,818	-	1,779,818
20		MMBTU	961,885	-	961,885
21		\$/MMBTU	1.85	-	2
22	May 2020	\$	3,960,575	-	3,960,575
23		MMBTU	2,134,208	-	2,134,208
24		\$/MMBTU	1.86	-	2
25	June 2020	\$	2,899,568	-	2,899,568
26		MMBTU	1,577,471	-	1,577,471
27		\$/MMBTU	1.84	-	2
28	July 2020	\$	6,627,074	-	6,627,074
29		MMBTU	3,562,899	-	3,562,899
30		\$/MMBTU	1.86	-	2
31	August 2020	\$	6,976,321	-	6,976,321
32		MMBTU	3,822,216	-	3,822,216
33		\$/MMBTU	1.83	-	2
34	September 2020	\$	2,503,427	-	2,503,427
35		MMBTU	1,401,981	-	1,401,981
36		\$/MMBTU	1.79	-	2
37					
38	Totals	\$	45,275,316	-	45,275,316
39		MMBTU	24,744,959	-	24,744,959
40		\$/MMBTU	1.83	-	1.83

Southwestern Public Service Company

Fuel Burned

			Total Oil - Jones		
Line No.	MONTH		(1) UNADJUSTED TEST YEAR	(2) ADJUSTMENTS	(3) ADJUSTED TEST YEAR
1	October 2019	\$	-	-	-
2		MMBTU	-	-	-
3		\$/MMBTU	-	-	-
4	November 2019	\$	3,744	-	3,744
5		MMBTU	254	-	254
6		\$/MMBTU	14.75	-	15
7	December 2019	\$	-	-	-
8		MMBTU	-	-	-
9		\$/MMBTU	-	-	-
10	January 2020	\$	-	-	-
11		MMBTU	-	-	-
12		\$/MMBTU	-	-	-
13	February 2020	\$	-	-	-
14		MMBTU	-	-	-
15		\$/MMBTU	-	-	-
16	March 2020	\$	-	-	-
17		MMBTU	-	-	-
18		\$/MMBTU	-	-	-
19	April 2020	\$	-	-	-
20		MMBTU	-	-	-
21		\$/MMBTU	-	-	-
22	May 2020	\$	-	-	-
23		MMBTU	-	-	-
24		\$/MMBTU	-	-	-
25	June 2020	\$	-	-	-
26		MMBTU	-	-	-
27		\$/MMBTU	-	-	-
28	July 2020	\$	-	-	-
29		MMBTU	-	-	-
30		\$/MMBTU	-	-	-
31	August 2020	\$	-	-	-
32		MMBTU	-	-	-
33		\$/MMBTU	-	-	-
34	September 2020	\$	-	-	-
35		MMBTU	-	-	-
36		\$/MMBTU	-	-	-
37					
38	Totals	\$	3,744	-	3,744
39		MMBTU	254	-	254
40		\$/MMBTU	14.75	-	14.75

Southwestern Public Service Company

Fuel Burned

Total Oil - Plant X					
Line No.	MONTH		(1) UNADJUSTED TEST YEAR	(2) ADJUSTMENTS	(3) ADJUSTED TEST YEAR
1	October 2019	\$	(1,713)	-	(1,713)
2		MMBTU	167	-	167
3		\$/MMBTU	(10.28)	-	(10)
4	November 2019	\$	3,426	-	3,426
5		MMBTU	-	-	-
6		\$/MMBTU	-	-	-
7	December 2019	\$	-	-	-
8		MMBTU	-	-	-
9		\$/MMBTU	-	-	-
10	January 2020	\$	368	-	368
11		MMBTU	36	-	36
12		\$/MMBTU	10.23	-	10
13	February 2020	\$	-	-	-
14		MMBTU	-	-	-
15		\$/MMBTU	-	-	-
16	March 2020	\$	-	-	-
17		MMBTU	-	-	-
18		\$/MMBTU	-	-	-
19	April 2020	\$	-	-	-
20		MMBTU	-	-	-
21		\$/MMBTU	-	-	-
22	May 2020	\$	-	-	-
23		MMBTU	-	-	-
24		\$/MMBTU	-	-	-
25	June 2020	\$	-	-	-
26		MMBTU	-	-	-
27		\$/MMBTU	-	-	-
28	July 2020	\$	-	-	-
29		MMBTU	-	-	-
30		\$/MMBTU	-	-	-
31	August 2020	\$	-	-	-
32		MMBTU	-	-	-
33		\$/MMBTU	-	-	-
34	September 2020	\$	-	-	-
35		MMBTU	-	-	-
36		\$/MMBTU	-	-	-
37					
38	Totals	\$	2,081	-	2,081
39		MMBTU	203	-	203
40		\$/MMBTU	10.27	-	10.27

Southwestern Public Service Company

Fuel Burned

Total Oil - Quay					
Line No.	MONTH		(1) UNADJUSTED TEST YEAR	(2) ADJUSTMENTS	(3) ADJUSTED TEST YEAR
1	October 2019	\$	0	-	0
2		MMBTU	0	-	0
3		\$/MMBTU	0.00	-	0
4	November 2019	\$	13,182	-	13,182
5		MMBTU	701	-	701
6		\$/MMBTU	18.79	-	19
7	December 2019	\$	481	-	481
8		MMBTU	26	-	26
9		\$/MMBTU	18.79	-	19
10	January 2020	\$	0	-	0
11		MMBTU	0	-	0
12		\$/MMBTU	0.00	-	0
13	February 2020	\$	37,220	-	37,220
14		MMBTU	1,981	-	1,981
15		\$/MMBTU	18.79	-	19
16	March 2020	\$	0	-	0
17		MMBTU	0	-	0
18		\$/MMBTU	0.00	-	0
19	April 2020	\$	0	-	0
20		MMBTU	0	-	0
21		\$/MMBTU	0.00	-	0
22	May 2020	\$	7,424	-	7,424
23		MMBTU	395	-	395
24		\$/MMBTU	18.79	-	19
25	June 2020	\$	7,096	-	7,096
26		MMBTU	378	-	378
27		\$/MMBTU	18.79	-	19
28	July 2020	\$	253	-	253
29		MMBTU	13	-	13
30		\$/MMBTU	18.79	-	19
31	August 2020	\$	253	-	253
32		MMBTU	13	-	13
33		\$/MMBTU	18.79	-	19
34	September 2020	\$	172	-	172
35		MMBTU	9	-	9
36		\$/MMBTU	18.79	-	19
37					
38	Totals	\$	<b>66,082</b>	-	<b>66,082</b>
39		MMBTU	<b>3,517</b>	-	<b>3,517</b>
40		\$/MMBTU	<b>18.79</b>	-	<b>18.79</b>

Southwestern Public Service Company

Fuel Burned

Total Company - Gas

Line No.	MONTH		(1) UNADJUSTED TEST YEAR	(2) ADJUSTMENTS	(3) ADJUSTED TEST YEAR
1	October 2019	\$	7,935,530	-	7,935,530
2		MMBTU	5,175,784	-	5,175,784
3		\$/MMBTU	1.53	-	2
4	November 2019	\$	7,360,304	-	7,360,304
5		MMBTU	5,038,883	-	5,038,883
6		\$/MMBTU	1.46	-	1
7	December 2019	\$	9,382,459	-	9,382,459
8		MMBTU	6,170,903	-	6,170,903
9		\$/MMBTU	1.52	-	2
10	January 2020	\$	8,835,428	-	8,835,428
11		MMBTU	7,632,512	-	7,632,512
12		\$/MMBTU	1.16	-	1
13	February 2020	\$	7,261,525	-	7,261,525
14		MMBTU	7,889,086	-	7,889,086
15		\$/MMBTU	0.92	-	1
16	March 2020	\$	4,581,200	-	4,581,200
17		MMBTU	7,173,478	-	7,173,478
18		\$/MMBTU	0.64	-	1
19	April 2020	\$	4,426,193	-	4,426,193
20		MMBTU	6,301,513	-	6,301,513
21		\$/MMBTU	0.70	-	1
22	May 2020	\$	7,751,864	-	7,751,864
23		MMBTU	4,286,909	-	4,286,909
24		\$/MMBTU	1.81	-	2
25	June 2020	\$	10,666,578	-	10,666,578
26		MMBTU	6,160,078	-	6,160,078
27		\$/MMBTU	1.73	-	2
28	July 2020	\$	16,175,104	-	16,175,104
29		MMBTU	10,261,000	-	10,261,000
30		\$/MMBTU	1.58	-	2
31	August 2020	\$	14,571,318	-	14,571,318
32		MMBTU	9,120,180	-	9,120,180
33		\$/MMBTU	1.60	-	2
34	September 2020	\$	11,891,503	-	11,891,503
35		MMBTU	6,667,912	-	6,667,912
36		\$/MMBTU	1.78	-	2
37					
38	Totals	\$	<b>110,839,004</b>	-	<b>110,839,005</b>
39		MMBTU	<b>81,878,235</b>	-	<b>81,878,235</b>
40		\$/MMBTU	<b>1.35</b>	-	<b>1.35</b>

Southwestern Public Service Company

Fuel Burned

Total Company - Coal

Line No.	MONTH		(1) UNADJUSTED TEST YEAR	(2) ADJUSTMENTS	(3) ADJUSTED TEST YEAR
1	October 2019	\$	7,859,909	-	7,859,909.45
2		MMBTU	4,623,710	-	4,623,709.91
3		\$/MMBTU	1.70	-	1.70
4	November 2019	\$	11,251,568	-	11,251,567.96
5		MMBTU	6,570,496	-	6,570,496.32
6		\$/MMBTU	1.71	-	1.71
7	December 2019	\$	9,896,605	-	9,896,604.82
8		MMBTU	5,580,592	-	5,580,592.15
9		\$/MMBTU	1.77	-	1.77
10	January 2020	\$	4,668,741	-	4,668,741.17
11		MMBTU	3,585,113	-	3,585,113.28
12		\$/MMBTU	1.30	-	1.30
13	February 2020	\$	5,827,148	-	5,827,147.94
14		MMBTU	2,677,997	-	2,677,997.35
15		\$/MMBTU	2.18	-	2.18
16	March 2020	\$	4,007,860	-	4,007,859.93
17		MMBTU	2,381,667	-	2,381,666.56
18		\$/MMBTU	1.68	-	1.68
19	April 2020	\$	3,745,469	-	3,745,469.09
20		MMBTU	2,172,497	-	2,172,497.29
21		\$/MMBTU	1.72	-	1.72
22	May 2020	\$	7,238,463	-	7,238,463.40
23		MMBTU	4,156,003	-	4,156,002.54
24		\$/MMBTU	1.74	-	1.74
25	June 2020	\$	7,329,487	-	7,329,486.60
26		MMBTU	4,320,541	-	4,320,540.67
27		\$/MMBTU	1.70	-	1.70
28	July 2020	\$	14,686,282	-	14,686,282.23
29		MMBTU	8,573,055	-	8,573,054.89
30		\$/MMBTU	1.71	-	1.71
31	August 2020	\$	15,108,357	-	15,108,356.83
32		MMBTU	8,953,179	-	8,953,179.18
33		\$/MMBTU	1.69	-	1.69
34	September 2020	\$	7,829,793	-	7,829,792.79
35		MMBTU	4,778,354	-	4,778,354.47
36		\$/MMBTU	1.64	-	1.64
37					
38	Totals	\$	99,449,682	-	99,449,682
39		MMBTU	58,373,205	-	58,373,205
40		\$/MMBTU	1.70	-	1.70

Southwestern Public Service Company

Fuel Burned

Total Company - Oil					
Line No.	MONTH		(1) UNADJUSTED TEST YEAR	(2) ADJUSTMENTS	(3) ADJUSTED TEST YEAR
1	October 2019	\$	(1,713)	-	(1,713)
2		MMBTU	167	-	167
3		\$/MMBTU	(10.28)	-	(10)
4	November 2019	\$	20,352	-	20,352
5		MMBTU	955	-	955
6		\$/MMBTU	21.31	-	21
7	December 2019	\$	481	-	481
8		MMBTU	26	-	26
9		\$/MMBTU	18.79	-	19
10	January 2020	\$	368	-	368
11		MMBTU	36	-	36
12		\$/MMBTU	10.23	-	10
13	February 2020	\$	37,220	-	37,220
14		MMBTU	1,981	-	1,981
15		\$/MMBTU	18.79	-	19
16	March 2020	\$	0	-	0
17		MMBTU	0	-	0
18		\$/MMBTU	0.00	-	0
19	April 2020	\$	0	-	0
20		MMBTU	0	-	0
21		\$/MMBTU	0.00	-	0
22	May 2020	\$	7,424	-	7,424
23		MMBTU	395	-	395
24		\$/MMBTU	18.79	-	19
25	June 2020	\$	7,096	-	7,096
26		MMBTU	378	-	378
27		\$/MMBTU	18.79	-	19
28	July 2020	\$	253	-	253
29		MMBTU	13	-	13
30		\$/MMBTU	18.79	-	19
31	August 2020	\$	253	-	253
32		MMBTU	13	-	13
33		\$/MMBTU	18.79	-	19
34	September 2020	\$	172	-	172
35		MMBTU	9	-	9
36		\$/MMBTU	18.79	-	19
37					
38	Totals	\$	71,907	-	71,907
39		MMBTU	3,973	-	3,973
40		\$/MMBTU	18.10	-	18.10

Southwestern Public Service Company

Fuel Burned

Total Company - Other					
Line No.	MONTH		(1) UNADJUSTED TEST YEAR	(2) ADJUSTMENTS	(3) ADJUSTED TEST YEAR
1	October 2019	\$	-	-	-
2		MMBTU	-	-	-
3		\$/MMBTU	-	-	-
4	November 2019	\$	-	-	-
5		MMBTU	-	-	-
6		\$/MMBTU	-	-	-
7	December 2019	\$	-	-	-
8		MMBTU	-	-	-
9		\$/MMBTU	-	-	-
10	January 2020	\$	-	-	-
11		MMBTU	-	-	-
12		\$/MMBTU	-	-	-
13	February 2020	\$	-	-	-
14		MMBTU	-	-	-
15		\$/MMBTU	-	-	-
16	March 2020	\$	-	-	-
17		MMBTU	-	-	-
18		\$/MMBTU	-	-	-
19	April 2020	\$	-	-	-
20		MMBTU	-	-	-
21		\$/MMBTU	-	-	-
22	May 2020	\$	-	-	-
23		MMBTU	-	-	-
24		\$/MMBTU	-	-	-
25	June 2020	\$	-	-	-
26		MMBTU	-	-	-
27		\$/MMBTU	-	-	-
28	July 2020	\$	-	-	-
29		MMBTU	-	-	-
30		\$/MMBTU	-	-	-
31	August 2020	\$	-	-	-
32		MMBTU	-	-	-
33		\$/MMBTU	-	-	-
34	September 2020	\$	-	-	-
35		MMBTU	-	-	-
36		\$/MMBTU	-	-	-
37					
38	Totals	\$	-	-	-
39		MMBTU	-	-	-
40		\$/MMBTU	-	-	-

Southwestern Public Service Company

Fuel Burned

Total Company - All Fuels					
Line No.	MONTH		(1) UNADJUSTED TEST YEAR	(2) ADJUSTMENTS	(3) ADJUSTED TEST YEAR
1	October 2019	\$	15,793,726	-	15,793,726
2		MMBTU	9,799,661	-	9,799,661
3		\$/MMBTU	1.61	-	2
4	November 2019	\$	18,632,223	-	18,632,223
5		MMBTU	11,610,334	-	11,610,334
6		\$/MMBTU	1.60	-	2
7	December 2019	\$	19,279,545	-	19,279,545
8		MMBTU	11,751,520	-	11,751,520
9		\$/MMBTU	1.64	-	2
10	January 2020	\$	13,504,537	-	13,504,537
11		MMBTU	11,217,661	-	11,217,661
12		\$/MMBTU	1.20	-	1
13	February 2020	\$	13,125,893	-	13,125,893
14		MMBTU	10,569,064	-	10,569,064
15		\$/MMBTU	1.24	-	1
16	March 2020	\$	8,589,060	-	8,589,060
17		MMBTU	9,555,145	-	9,555,145
18		\$/MMBTU	0.90	-	1
19	April 2020	\$	8,171,662	-	8,171,662
20		MMBTU	8,474,010	-	8,474,010
21		\$/MMBTU	0.96	-	1
22	May 2020	\$	14,997,751	-	14,997,751
23		MMBTU	8,443,306	-	8,443,306
24		\$/MMBTU	1.78	-	2
25	June 2020	\$	18,003,161	-	18,003,161
26		MMBTU	10,480,996	-	10,480,996
27		\$/MMBTU	1.72	-	2
28	July 2020	\$	30,861,639	-	30,861,639
29		MMBTU	18,834,068	-	18,834,068
30		\$/MMBTU	1.64	-	2
31	August 2020	\$	29,679,928	-	29,679,928
32		MMBTU	18,073,372	-	18,073,372
33		\$/MMBTU	1.64	-	2
34	September 2020	\$	19,721,467	-	19,721,467
35		MMBTU	11,446,275	-	11,446,275
36		\$/MMBTU	1.72	-	2
37					
38	Totals	\$	210,360,594	-	210,360,594
39		MMBTU	140,255,413	-	140,255,413
40		\$/MMBTU	1.50	-	1.50

**Southwestern Public Service Company**

**Fossil Fuel Purchased**

**Class** Coal  
**Plant** Harrington  
**Supplier** TUCO, Inc.

Line No.	MONTH		(1) UNADJUSTED	(2) ADJUSTMENTS	(3) ADJUSTED
1	October 2019	\$			
2		MMBTU			
3		\$/MMBTU			
4	November 2019	\$			
5		MMBTU			
6		\$/MMBTU			
7	December 2019	\$			
8		MMBTU			
9		\$/MMBTU			
10	January 2020	\$			
11		MMBTU			
12		\$/MMBTU			
13	February 2020	\$			
14		MMBTU			
15		\$/MMBTU			
16	March 2020	\$			
17		MMBTU			
18		\$/MMBTU			
19	April 2020	\$			
20		MMBTU			
21		\$/MMBTU			
22	May 2020	\$			
23		MMBTU			
24		\$/MMBTU			
25	June 2020	\$			
26		MMBTU			
27		\$/MMBTU			
28	July 2020	\$			
29		MMBTU			
30		\$/MMBTU			
31	August 2020	\$			
32		MMBTU			
33		\$/MMBTU			
34	September 2020	\$			
35		MMBTU			
36		\$/MMBTU			
37	<b>Total</b>	<b>\$</b>			
38		<b>MMBTU</b>			
39		<b>\$/MMBTU</b>			

**Note:** These amounts also include fuel and handling costs paid to the supplier.

**Southwestern Public Service Company**

**Fossil Fuel Purchased**

**Class** Coal  
**Plant** Tolk  
**Supplier** TUCO, Inc.

Line No.	MONTH		(1) UNADJUSTED	(2) ADJUSTMENTS	(3) ADJUSTED
1	October 2019	\$			
2		MMBTU			
3		\$/MMBTU			
4	November 2019	\$			
5		MMBTU			
6		\$/MMBTU			
7	December 2019	\$			
8		MMBTU			
9		\$/MMBTU			
10	January 2020	\$			
11		MMBTU			
12		\$/MMBTU			
13	February 2020	\$			
14		MMBTU			
15		\$/MMBTU			
16	March 2020	\$			
17		MMBTU			
18		\$/MMBTU			
19	April 2020	\$			
20		MMBTU			
21		\$/MMBTU			
22	May 2020	\$			
23		MMBTU			
24		\$/MMBTU			
25	June 2020	\$			
26		MMBTU			
27		\$/MMBTU			
28	July 2020	\$			
29		MMBTU			
30		\$/MMBTU			
31	August 2020	\$			
32		MMBTU			
33		\$/MMBTU			
34	September 2020	\$			
35		MMBTU			
36		\$/MMBTU			
37	<b>Total</b>	<b>\$</b>			
38		<b>MMBTU</b>			
39		<b>\$/MMBTU</b>			

**Southwestern Public Service Company**

**Fossil Fuel Purchased**

**Class** Gas  
**Plant** Cunningham - GT  
**Supplier** Northern Natural Gas

Line No.	MONTH		(1) UNADJUSTED	(2) ADJUSTMENTS	(3) ADJUSTED
1	October 2019	\$			
2		MMBTU			
3		\$/MMBTU			
4	November 2019	\$			
5		MMBTU			
6		\$/MMBTU			
7	December 2019	\$			
8		MMBTU			
9		\$/MMBTU			
10	January 2020	\$			
11		MMBTU			
12		\$/MMBTU			
13	February 2020	\$			
14		MMBTU			
15		\$/MMBTU			
16	March 2020	\$			
17		MMBTU			
18		\$/MMBTU			
19	April 2020	\$			
20		MMBTU			
21		\$/MMBTU			
22	May 2020	\$			
23		MMBTU			
24		\$/MMBTU			
25	June 2020	\$			
26		MMBTU			
27		\$/MMBTU			
28	July 2020	\$			
29		MMBTU			
30		\$/MMBTU			
31	August 2020	\$			
32		MMBTU			
33		\$/MMBTU			
34	September 2020	\$			
35		MMBTU			
36		\$/MMBTU			
37	<b>Total</b>	\$			
38		MMBTU			
39		\$/MMBTU			

**Southwestern Public Service Company**

**Fossil Fuel Purchased**

**Class** Gas  
**Plant** Cunningham - GT  
**Supplier** Transwestern Pipeline Company

Line No.	MONTH		(1) UNADJUSTED	(2) ADJUSTMENTS	(3) ADJUSTED
1	October 2019	\$			
2		MMBTU			
3		\$/MMBTU			
4	November 2019	\$			
5		MMBTU			
6		\$/MMBTU			
7	December 2019	\$			
8		MMBTU			
9		\$/MMBTU			
10	January 2020	\$			
11		MMBTU			
12		\$/MMBTU			
13	February 2020	\$			
14		MMBTU			
15		\$/MMBTU			
16	March 2020	\$			
17		MMBTU			
18		\$/MMBTU			
19	April 2020	\$			
20		MMBTU			
21		\$/MMBTU			
22	May 2020	\$			
23		MMBTU			
24		\$/MMBTU			
25	June 2020	\$			
26		MMBTU			
27		\$/MMBTU			
28	July 2020	\$			
29		MMBTU			
30		\$/MMBTU			
31	August 2020	\$			
32		MMBTU			
33		\$/MMBTU			
34	September 2020	\$			
35		MMBTU			
36		\$/MMBTU			
37	<b>Total</b>	<b>\$</b>			
38		<b>MMBTU</b>			
39		<b>\$/MMBTU</b>			

**Southwestern Public Service Company**

**Fossil Fuel Purchased**

**Class** Gas  
**Plant** Cunningham - GT  
**Supplier** El Paso Natural Gas

Line No.	MONTH		(1) UNADJUSTED	(2) ADJUSTMENTS	(3) ADJUSTED
1	October 2019	\$			
2		MMBTU			
3		\$/MMBTU			
4	November 2019	\$			
5		MMBTU			
6		\$/MMBTU			
7	December 2019	\$			
8		MMBTU			
9		\$/MMBTU			
10	January 2020	\$			
11		MMBTU			
12		\$/MMBTU			
13	February 2020	\$			
14		MMBTU			
15		\$/MMBTU			
16	March 2020	\$			
17		MMBTU			
18		\$/MMBTU			
19	April 2020	\$			
20		MMBTU			
21		\$/MMBTU			
22	May 2020	\$			
23		MMBTU			
24		\$/MMBTU			
25	June 2020	\$			
26		MMBTU			
27		\$/MMBTU			
28	July 2020	\$			
29		MMBTU			
30		\$/MMBTU			
31	August 2020	\$			
32		MMBTU			
33		\$/MMBTU			
34	September 2020	\$			
35		MMBTU			
36		\$/MMBTU			
37	<b>Total</b>	<b>\$</b>			
38		<b>MMBTU</b>			
39		<b>\$/MMBTU</b>			

**Southwestern Public Service Company**

**Fossil Fuel Purchased**

**Class** Gas  
**Plant** Cunningham - ST  
**Supplier** Northern Natural Gas

Line No.	MONTH		(1) UNADJUSTED	(2) ADJUSTMENTS	(3) ADJUSTED
1	October 2019	\$			
2		MMBTU			
3		\$/MMBTU			
4	November 2019	\$			
5		MMBTU			
6		\$/MMBTU			
7	December 2019	\$			
8		MMBTU			
9		\$/MMBTU			
10	January 2020	\$			
11		MMBTU			
12		\$/MMBTU			
13	February 2020	\$			
14		MMBTU			
15		\$/MMBTU			
16	March 2020	\$			
17		MMBTU			
18		\$/MMBTU			
19	April 2020	\$			
20		MMBTU			
21		\$/MMBTU			
22	May 2020	\$			
23		MMBTU			
24		\$/MMBTU			
25	June 2020	\$			
26		MMBTU			
27		\$/MMBTU			
28	July 2020	\$			
29		MMBTU			
30		\$/MMBTU			
31	August 2020	\$			
32		MMBTU			
33		\$/MMBTU			
34	September 2020	\$			
35		MMBTU			
36		\$/MMBTU			
37	<b>Total</b>	\$			
38		MMBTU			
39		\$/MMBTU			

**Southwestern Public Service Company**

**Fossil Fuel Purchased**

**Class** Gas  
**Plant** Cunningham - ST  
**Supplier** El Paso Natural Gas

Line No.	MONTH		(1) UNADJUSTED	(2) ADJUSTMENTS	(3) ADJUSTED
1	October 2019	\$			
2		MMBTU			
3		\$/MMBTU			
4	November 2019	\$			
5		MMBTU			
6		\$/MMBTU			
7	December 2019	\$			
8		MMBTU			
9		\$/MMBTU			
10	January 2020	\$			
11		MMBTU			
12		\$/MMBTU			
13	February 2020	\$			
14		MMBTU			
15		\$/MMBTU			
16	March 2020	\$			
17		MMBTU			
18		\$/MMBTU			
19	April 2020	\$			
20		MMBTU			
21		\$/MMBTU			
22	May 2020	\$			
23		MMBTU			
24		\$/MMBTU			
25	June 2020	\$			
26		MMBTU			
27		\$/MMBTU			
28	July 2020	\$			
29		MMBTU			
30		\$/MMBTU			
31	August 2020	\$			
32		MMBTU			
33		\$/MMBTU			
34	September 2020	\$			
35		MMBTU			
36		\$/MMBTU			
37	<b>Total</b>	\$			
38		MMBTU			
39		\$/MMBTU			

**Southwestern Public Service Company**

**Fossil Fuel Purchased**

**Class** Gas  
**Plant** Cunningham - ST  
**Supplier** Transwestern Pipeline Company

Line No.	MONTH		(1) UNADJUSTED	(2) ADJUSTMENTS	(3) ADJUSTED
1	October 2019	\$			
2		MMBTU			
3		\$/MMBTU			
4	November 2019	\$			
5		MMBTU			
6		\$/MMBTU			
7	December 2019	\$			
8		MMBTU			
9		\$/MMBTU			
10	January 2020	\$			
11		MMBTU			
12		\$/MMBTU			
13	February 2020	\$			
14		MMBTU			
15		\$/MMBTU			
16	March 2020	\$			
17		MMBTU			
18		\$/MMBTU			
19	April 2020	\$			
20		MMBTU			
21		\$/MMBTU			
22	May 2020	\$			
23		MMBTU			
24		\$/MMBTU			
25	June 2020	\$			
26		MMBTU			
27		\$/MMBTU			
28	July 2020	\$			
29		MMBTU			
30		\$/MMBTU			
31	August 2020	\$			
32		MMBTU			
33		\$/MMBTU			
34	September 2020	\$			
35		MMBTU			
36		\$/MMBTU			
37	<b>Total</b>	<b>\$</b>			
38		<b>MMBTU</b>			
39		<b>\$/MMBTU</b>			

**Southwestern Public Service Company**

**Fossil Fuel Purchased**

**Class** Gas  
**Plant** Harrington  
**Supplier** Northern Natural Gas

Line No.	MONTH		(1) UNADJUSTED	(2) ADJUSTMENTS	(3) ADJUSTED
1	October 2019	\$			
2		MMBTU			
3		\$/MMBTU			
4	November 2019	\$			
5		MMBTU			
6		\$/MMBTU			
7	December 2019	\$			
8		MMBTU			
9		\$/MMBTU			
10	January 2020	\$			
11		MMBTU			
12		\$/MMBTU			
13	February 2020	\$			
14		MMBTU			
15		\$/MMBTU			
16	March 2020	\$			
17		MMBTU			
18		\$/MMBTU			
19	April 2020	\$			
20		MMBTU			
21		\$/MMBTU			
22	May 2020	\$			
23		MMBTU			
24		\$/MMBTU			
25	June 2020	\$			
26		MMBTU			
27		\$/MMBTU			
28	July 2020	\$			
29		MMBTU			
30		\$/MMBTU			
31	August 2020	\$			
32		MMBTU			
33		\$/MMBTU			
34	September 2020	\$			
35		MMBTU			
36		\$/MMBTU			
37	<b>Total</b>	<b>\$</b>			
38		<b>MMBTU</b>			
39		<b>\$/MMBTU</b>			

**Southwestern Public Service Company**

**Fossil Fuel Purchased**

**Class** Gas  
**Plant** Harrington  
**Supplier** Westex

Line No.	MONTH		(1) UNADJUSTED	(2) ADJUSTMENTS	(3) ADJUSTED
1	October 2019	\$			
2		MMBTU			
3		\$/MMBTU			
4	November 2019	\$			
5		MMBTU			
6		\$/MMBTU			
7	December 2019	\$			
8		MMBTU			
9		\$/MMBTU			
10	January 2020	\$			
11		MMBTU			
12		\$/MMBTU			
13	February 2020	\$			
14		MMBTU			
15		\$/MMBTU			
16	March 2020	\$			
17		MMBTU			
18		\$/MMBTU			
19	April 2020	\$			
20		MMBTU			
21		\$/MMBTU			
22	May 2020	\$			
23		MMBTU			
24		\$/MMBTU			
25	June 2020	\$			
26		MMBTU			
27		\$/MMBTU			
28	July 2020	\$			
29		MMBTU			
30		\$/MMBTU			
31	August 2020	\$			
32		MMBTU			
33		\$/MMBTU			
34	September 2020	\$			
35		MMBTU			
36		\$/MMBTU			
37	<b>Total</b>	<b>\$</b>			
38		<b>MMBTU</b>			
39		<b>\$/MMBTU</b>			

**Southwestern Public Service Company**

**Fossil Fuel Purchased**

**Class** Gas  
**Plant** Harrington  
**Supplier** El Paso Natural Gas

Line No.	MONTH		(1) UNADJUSTED	(2) ADJUSTMENTS	(3) ADJUSTED
1	October 2019	\$			
2		MMBTU			
3		\$/MMBTU			
4	November 2019	\$			
5		MMBTU			
6		\$/MMBTU			
7	December 2019	\$			
8		MMBTU			
9		\$/MMBTU			
10	January 2020	\$			
11		MMBTU			
12		\$/MMBTU			
13	February 2020	\$			
14		MMBTU			
15		\$/MMBTU			
16	March 2020	\$			
17		MMBTU			
18		\$/MMBTU			
19	April 2020	\$			
20		MMBTU			
21		\$/MMBTU			
22	May 2020	\$			
23		MMBTU			
24		\$/MMBTU			
25	June 2020	\$			
26		MMBTU			
27		\$/MMBTU			
28	July 2020	\$			
29		MMBTU			
30		\$/MMBTU			
31	August 2020	\$			
32		MMBTU			
33		\$/MMBTU			
34	September 2020	\$			
35		MMBTU			
36		\$/MMBTU			
37	<b>Total</b>	<b>\$</b>			
38		<b>MMBTU</b>			
39		<b>\$/MMBTU</b>			

**Southwestern Public Service Company**

**Fossil Fuel Purchased**

**Class** Gas  
**Plant** Jones ST  
**Supplier** Northern Natural Gas

Line No.	MONTH		(1) UNADJUSTED	(2) ADJUSTMENTS	(3) ADJUSTED
1	October 2019	\$			
2		MMBTU			
3		\$/MMBTU			
4	November 2019	\$			
5		MMBTU			
6		\$/MMBTU			
7	December 2019	\$			
8		MMBTU			
9		\$/MMBTU			
10	January 2020	\$			
11		MMBTU			
12		\$/MMBTU			
13	February 2020	\$			
14		MMBTU			
15		\$/MMBTU			
16	March 2020	\$			
17		MMBTU			
18		\$/MMBTU			
19	April 2020	\$			
20		MMBTU			
21		\$/MMBTU			
22	May 2020	\$			
23		MMBTU			
24		\$/MMBTU			
25	June 2020	\$			
26		MMBTU			
27		\$/MMBTU			
28	July 2020	\$			
29		MMBTU			
30		\$/MMBTU			
31	August 2020	\$			
32		MMBTU			
33		\$/MMBTU			
34	September 2020	\$			
35		MMBTU			
36		\$/MMBTU			
37	<b>Total</b>	<b>\$</b>			
38		<b>MMBTU</b>			
39		<b>\$/MMBTU</b>			

**Southwestern Public Service Company**

**Fossil Fuel Purchased**

**Class** Gas  
**Plant** Jones ST  
**Supplier** Westex

Line No.	MONTH		(1) UNADJUSTED	(2) ADJUSTMENTS	(3) ADJUSTED
1	October 2019	\$			
2		MMBTU			
3		\$/MMBTU			
4	November 2019	\$			
5		MMBTU			
6		\$/MMBTU			
7	December 2019	\$			
8		MMBTU			
9		\$/MMBTU			
10	January 2020	\$			
11		MMBTU			
12		\$/MMBTU			
13	February 2020	\$			
14		MMBTU			
15		\$/MMBTU			
16	March 2020	\$			
17		MMBTU			
18		\$/MMBTU			
19	April 2020	\$			
20		MMBTU			
21		\$/MMBTU			
22	May 2020	\$			
23		MMBTU			
24		\$/MMBTU			
25	June 2020	\$			
26		MMBTU			
27		\$/MMBTU			
28	July 2020	\$			
29		MMBTU			
30		\$/MMBTU			
31	August 2020	\$			
32		MMBTU			
33		\$/MMBTU			
34	September 2020	\$			
35		MMBTU			
36		\$/MMBTU			
37	<b>Total</b>	<b>\$</b>			
38		<b>MMBTU</b>			
39		<b>\$/MMBTU</b>			

**Southwestern Public Service Company**

**Fossil Fuel Purchased**

**Class** Gas  
**Plant** Jones ST  
**Supplier** El Paso Natural Gas

Line No.	MONTH		(1) UNADJUSTED	(2) ADJUSTMENTS	(3) ADJUSTED
1	October 2019	\$			
2		MMBTU			
3		\$/MMBTU			
4	November 2019	\$			
5		MMBTU			
6		\$/MMBTU			
7	December 2019	\$			
8		MMBTU			
9		\$/MMBTU			
10	January 2020	\$			
11		MMBTU			
12		\$/MMBTU			
13	February 2020	\$			
14		MMBTU			
15		\$/MMBTU			
16	March 2020	\$			
17		MMBTU			
18		\$/MMBTU			
19	April 2020	\$			
20		MMBTU			
21		\$/MMBTU			
22	May 2020	\$			
23		MMBTU			
24		\$/MMBTU			
25	June 2020	\$			
26		MMBTU			
27		\$/MMBTU			
28	July 2020	\$			
29		MMBTU			
30		\$/MMBTU			
31	August 2020	\$			
32		MMBTU			
33		\$/MMBTU			
34	September 2020	\$			
35		MMBTU			
36		\$/MMBTU			
37	<b>Total</b>	\$			
38		MMBTU			
39		\$/MMBTU			

**Southwestern Public Service Company**

**Fossil Fuel Purchased**

**Class** Gas  
**Plant** Jones - GT  
**Supplier** Northern Natural Gas

Line No.	MONTH		(1) UNADJUSTED	(2) ADJUSTMENTS	(3) ADJUSTED
1	October 2019	\$			
2		MMBTU			
3		\$/MMBTU			
4	November 2019	\$			
5		MMBTU			
6		\$/MMBTU			
7	December 2019	\$			
8		MMBTU			
9		\$/MMBTU			
10	January 2020	\$			
11		MMBTU			
12		\$/MMBTU			
13	February 2020	\$			
14		MMBTU			
15		\$/MMBTU			
16	March 2020	\$			
17		MMBTU			
18		\$/MMBTU			
19	April 2020	\$			
20		MMBTU			
21		\$/MMBTU			
22	May 2020	\$			
23		MMBTU			
24		\$/MMBTU			
25	June 2020	\$			
26		MMBTU			
27		\$/MMBTU			
28	July 2020	\$			
29		MMBTU			
30		\$/MMBTU			
31	August 2020	\$			
32		MMBTU			
33		\$/MMBTU			
34	September 2020	\$			
35		MMBTU			
36		\$/MMBTU			
37	<b>Total</b>	<b>\$</b>			
38		<b>MMBTU</b>			
39		<b>\$/MMBTU</b>			

**Southwestern Public Service Company**

**Fossil Fuel Purchased**

**Class** Gas  
**Plant** Jones - GT  
**Supplier** Westex

Line No.	MONTH		(1) UNADJUSTED	(2) ADJUSTMENTS	(3) ADJUSTED
1	October 2019	\$			
2		MMBTU			
3		\$/MMBTU			
4	November 2019	\$			
5		MMBTU			
6		\$/MMBTU			
7	December 2019	\$			
8		MMBTU			
9		\$/MMBTU			
10	January 2020	\$			
11		MMBTU			
12		\$/MMBTU			
13	February 2020	\$			
14		MMBTU			
15		\$/MMBTU			
16	March 2020	\$			
17		MMBTU			
18		\$/MMBTU			
19	April 2020	\$			
20		MMBTU			
21		\$/MMBTU			
22	May 2020	\$			
23		MMBTU			
24		\$/MMBTU			
25	June 2020	\$			
26		MMBTU			
27		\$/MMBTU			
28	July 2020	\$			
29		MMBTU			
30		\$/MMBTU			
31	August 2020	\$			
32		MMBTU			
33		\$/MMBTU			
34	September 2020	\$			
35		MMBTU			
36		\$/MMBTU			
37	<b>Total</b>	\$			
38		MMBTU			
39		\$/MMBTU			

**Southwestern Public Service Company**

**Fossil Fuel Purchased**

**Class** Gas  
**Plant** Jones - GT  
**Supplier** El Paso Natural Gas

Line No.	MONTH		(1) UNADJUSTED	(2) ADJUSTMENTS	(3) ADJUSTED
1	October 2019	\$			
2		MMBTU			
3		\$/MMBTU			
4	November 2019	\$			
5		MMBTU			
6		\$/MMBTU			
7	December 2019	\$			
8		MMBTU			
9		\$/MMBTU			
10	January 2020	\$			
11		MMBTU			
12		\$/MMBTU			
13	February 2020	\$			
14		MMBTU			
15		\$/MMBTU			
16	March 2020	\$			
17		MMBTU			
18		\$/MMBTU			
19	April 2020	\$			
20		MMBTU			
21		\$/MMBTU			
22	May 2020	\$			
23		MMBTU			
24		\$/MMBTU			
25	June 2020	\$			
26		MMBTU			
27		\$/MMBTU			
28	July 2020	\$			
29		MMBTU			
30		\$/MMBTU			
31	August 2020	\$			
32		MMBTU			
33		\$/MMBTU			
34	September 2020	\$			
35		MMBTU			
36		\$/MMBTU			
37	<b>Total</b>	<b>\$</b>			
38		<b>MMBTU</b>			
39		<b>\$/MMBTU</b>			

**Southwestern Public Service Company**

**Fossil Fuel Purchased**

**Class** Gas  
**Plant** Maddox - GT  
**Supplier** El Paso Natural Gas

Line No.	MONTH		(1) UNADJUSTED	(2) ADJUSTMENTS	(3) ADJUSTED
1	October 2019	\$			
2		MMBTU			
3		\$/MMBTU			
4	November 2019	\$			
5		MMBTU			
6		\$/MMBTU			
7	December 2019	\$			
8		MMBTU			
9		\$/MMBTU			
10	January 2020	\$			
11		MMBTU			
12		\$/MMBTU			
13	February 2020	\$			
14		MMBTU			
15		\$/MMBTU			
16	March 2020	\$			
17		MMBTU			
18		\$/MMBTU			
19	April 2020	\$			
20		MMBTU			
21		\$/MMBTU			
22	May 2020	\$			
23		MMBTU			
24		\$/MMBTU			
25	June 2020	\$			
26		MMBTU			
27		\$/MMBTU			
28	July 2020	\$			
29		MMBTU			
30		\$/MMBTU			
31	August 2020	\$			
32		MMBTU			
33		\$/MMBTU			
34	September 2020	\$			
35		MMBTU			
36		\$/MMBTU			
37	<b>Total</b>	<b>\$</b>			
38		<b>MMBTU</b>			
39		<b>\$/MMBTU</b>			

**Southwestern Public Service Company**

**Fossil Fuel Purchased**

**Class** Gas  
**Plant** Maddox - GT  
**Supplier** Northern Natural Gas

Line No.	MONTH		(1) UNADJUSTED	(2) ADJUSTMENTS	(3) ADJUSTED
1	October 2019	\$			
2		MMBTU			
3		\$/MMBTU			
4	November 2019	\$			
5		MMBTU			
6		\$/MMBTU			
7	December 2019	\$			
8		MMBTU			
9		\$/MMBTU			
10	January 2020	\$			
11		MMBTU			
12		\$/MMBTU			
13	February 2020	\$			
14		MMBTU			
15		\$/MMBTU			
16	March 2020	\$			
17		MMBTU			
18		\$/MMBTU			
19	April 2020	\$			
20		MMBTU			
21		\$/MMBTU			
22	May 2020	\$			
23		MMBTU			
24		\$/MMBTU			
25	June 2020	\$			
26		MMBTU			
27		\$/MMBTU			
28	July 2020	\$			
29		MMBTU			
30		\$/MMBTU			
31	August 2020	\$			
32		MMBTU			
33		\$/MMBTU			
34	September 2020	\$			
35		MMBTU			
36		\$/MMBTU			
37	<b>Total</b>	<b>\$</b>			
38		<b>MMBTU</b>			
39		<b>\$/MMBTU</b>			

**Southwestern Public Service Company**

**Fossil Fuel Purchased**

**Class** Gas  
**Plant** Maddox - GT  
**Supplier** Transwestern Pipeline Company

Line No.	MONTH		(1) UNADJUSTED	(2) ADJUSTMENTS	(3) ADJUSTED
1	October 2019	\$			
2		MMBTU			
3		\$/MMBTU			
4	November 2019	\$			
5		MMBTU			
6		\$/MMBTU			
7	December 2019	\$			
8		MMBTU			
9		\$/MMBTU			
10	January 2020	\$			
11		MMBTU			
12		\$/MMBTU			
13	February 2020	\$			
14		MMBTU			
15		\$/MMBTU			
16	March 2020	\$			
17		MMBTU			
18		\$/MMBTU			
19	April 2020	\$			
20		MMBTU			
21		\$/MMBTU			
22	May 2020	\$			
23		MMBTU			
24		\$/MMBTU			
25	June 2020	\$			
26		MMBTU			
27		\$/MMBTU			
28	July 2020	\$			
29		MMBTU			
30		\$/MMBTU			
31	August 2020	\$			
32		MMBTU			
33		\$/MMBTU			
34	September 2020	\$			
35		MMBTU			
36		\$/MMBTU			
37	<b>Total</b>	<b>\$</b>			
38		<b>MMBTU</b>			
39		<b>\$/MMBTU</b>			

**Southwestern Public Service Company**

**Fossil Fuel Purchased**

**Class** Gas  
**Plant** Maddox - ST  
**Supplier** El Paso Natural Gas

Line No.	MONTH		(1) UNADJUSTED	(2) ADJUSTMENTS	(3) ADJUSTED
1	October 2019	\$			
2		MMBTU			
3		\$/MMBTU			
4	November 2019	\$			
5		MMBTU			
6		\$/MMBTU			
7	December 2019	\$			
8		MMBTU			
9		\$/MMBTU			
10	January 2020	\$			
11		MMBTU			
12		\$/MMBTU			
13	February 2020	\$			
14		MMBTU			
15		\$/MMBTU			
16	March 2020	\$			
17		MMBTU			
18		\$/MMBTU			
19	April 2020	\$			
20		MMBTU			
21		\$/MMBTU			
22	May 2020	\$			
23		MMBTU			
24		\$/MMBTU			
25	June 2020	\$			
26		MMBTU			
27		\$/MMBTU			
28	July 2020	\$			
29		MMBTU			
30		\$/MMBTU			
31	August 2020	\$			
32		MMBTU			
33		\$/MMBTU			
34	September 2020	\$			
35		MMBTU			
36		\$/MMBTU			
37	<b>Total</b>	<b>\$</b>			
38		<b>MMBTU</b>			
39		<b>\$/MMBTU</b>			

**Southwestern Public Service Company**

**Fossil Fuel Purchased**

**Class** Gas  
**Plant** Maddox - ST  
**Supplier** Northern Natural Gas

Line No.	MONTH		(1) UNADJUSTED	(2) ADJUSTMENTS	(3) ADJUSTED
1	October 2019	\$			
2		MMBTU			
3		\$/MMBTU			
4	November 2019	\$			
5		MMBTU			
6		\$/MMBTU			
7	December 2019	\$			
8		MMBTU			
9		\$/MMBTU			
10	January 2020	\$			
11		MMBTU			
12		\$/MMBTU			
13	February 2020	\$			
14		MMBTU			
15		\$/MMBTU			
16	March 2020	\$			
17		MMBTU			
18		\$/MMBTU			
19	April 2020	\$			
20		MMBTU			
21		\$/MMBTU			
22	May 2020	\$			
23		MMBTU			
24		\$/MMBTU			
25	June 2020	\$			
26		MMBTU			
27		\$/MMBTU			
28	July 2020	\$			
29		MMBTU			
30		\$/MMBTU			
31	August 2020	\$			
32		MMBTU			
33		\$/MMBTU			
34	September 2020	\$			
35		MMBTU			
36		\$/MMBTU			
37	<b>Total</b>	<b>\$</b>			
38		<b>MMBTU</b>			
39		<b>\$/MMBTU</b>			

**Southwestern Public Service Company**

**Fossil Fuel Purchased**

**Class** Gas  
**Plant** Maddox - ST  
**Supplier** Transwestern Pipeline Company

Line No.	MONTH		(1) UNADJUSTED	(2) ADJUSTMENTS	(3) ADJUSTED
1	October 2019	\$			
2		MMBTU			
3		\$/MMBTU			
4	November 2019	\$			
5		MMBTU			
6		\$/MMBTU			
7	December 2019	\$			
8		MMBTU			
9		\$/MMBTU			
10	January 2020	\$			
11		MMBTU			
12		\$/MMBTU			
13	February 2020	\$			
14		MMBTU			
15		\$/MMBTU			
16	March 2020	\$			
17		MMBTU			
18		\$/MMBTU			
19	April 2020	\$			
20		MMBTU			
21		\$/MMBTU			
22	May 2020	\$			
23		MMBTU			
24		\$/MMBTU			
25	June 2020	\$			
26		MMBTU			
27		\$/MMBTU			
28	July 2020	\$			
29		MMBTU			
30		\$/MMBTU			
31	August 2020	\$			
32		MMBTU			
33		\$/MMBTU			
34	September 2020	\$			
35		MMBTU			
36		\$/MMBTU			
37	<b>Total</b>	<b>\$</b>			
38		<b>MMBTU</b>			
39		<b>\$/MMBTU</b>			

**Southwestern Public Service Company**

**Fossil Fuel Purchased**

**Class** Gas  
**Plant** Moore County  
**Supplier** Northern Natural Gas

Line No.	MONTH		(1) UNADJUSTED	(2) ADJUSTMENTS	(3) ADJUSTED
1	October 2019	\$			
2		MMBTU			
3		\$/MMBTU			
4	November 2019	\$			
5		MMBTU			
6		\$/MMBTU			
7	December 2019	\$			
8		MMBTU			
9		\$/MMBTU			
10	January 2020	\$			
11		MMBTU			
12		\$/MMBTU			
13	February 2020	\$			
14		MMBTU			
15		\$/MMBTU			
16	March 2020	\$			
17		MMBTU			
18		\$/MMBTU			
19	April 2020	\$			
20		MMBTU			
21		\$/MMBTU			
22	May 2020	\$			
23		MMBTU			
24		\$/MMBTU			
25	June 2020	\$			
26		MMBTU			
27		\$/MMBTU			
28	July 2020	\$			
29		MMBTU			
30		\$/MMBTU			
31	August 2020	\$			
32		MMBTU			
33		\$/MMBTU			
34	September 2020	\$			
35		MMBTU			
36		\$/MMBTU			
37	<b>Total</b>	\$			
38		MMBTU			
39		\$/MMBTU			

**Southwestern Public Service Company**

**Fossil Fuel Purchased**

**Class** Gas  
**Plant** Moore County  
**Supplier** Westex

Line No.	MONTH		(1) UNADJUSTED	(2) ADJUSTMENTS	(3) ADJUSTED
1	October 2019	\$			
2		MMBTU			
3		\$/MMBTU			
4	November 2019	\$			
5		MMBTU			
6		\$/MMBTU			
7	December 2019	\$			
8		MMBTU			
9		\$/MMBTU			
10	January 2020	\$			
11		MMBTU			
12		\$/MMBTU			
13	February 2020	\$			
14		MMBTU			
15		\$/MMBTU			
16	March 2020	\$			
17		MMBTU			
18		\$/MMBTU			
19	April 2020	\$			
20		MMBTU			
21		\$/MMBTU			
22	May 2020	\$			
23		MMBTU			
24		\$/MMBTU			
25	June 2020	\$			
26		MMBTU			
27		\$/MMBTU			
28	July 2020	\$			
29		MMBTU			
30		\$/MMBTU			
31	August 2020	\$			
32		MMBTU			
33		\$/MMBTU			
34	September 2020	\$			
35		MMBTU			
36		\$/MMBTU			
37	<b>Total</b>	\$			
38		MMBTU			
39		\$/MMBTU			

**Southwestern Public Service Company**

**Fossil Fuel Purchased**

**Class** Gas  
**Plant** Nichols  
**Supplier** Natural Gas Pipeline Company

Line No.	MONTH		(1) UNADJUSTED	(2) ADJUSTMENTS	(3) ADJUSTED
1	October 2019	\$			
2		MMBTU			
3		\$/MMBTU			
4	November 2019	\$			
5		MMBTU			
6		\$/MMBTU			
7	December 2019	\$			
8		MMBTU			
9		\$/MMBTU			
10	January 2020	\$			
11		MMBTU			
12		\$/MMBTU			
13	February 2020	\$			
14		MMBTU			
15		\$/MMBTU			
16	March 2020	\$			
17		MMBTU			
18		\$/MMBTU			
19	April 2020	\$			
20		MMBTU			
21		\$/MMBTU			
22	May 2020	\$			
23		MMBTU			
24		\$/MMBTU			
25	June 2020	\$			
26		MMBTU			
27		\$/MMBTU			
28	July 2020	\$			
29		MMBTU			
30		\$/MMBTU			
31	August 2020	\$			
32		MMBTU			
33		\$/MMBTU			
34	September 2020	\$			
35		MMBTU			
36		\$/MMBTU			
37	<b>Total</b>	<b>\$</b>			
38		<b>MMBTU</b>			
39		<b>\$/MMBTU</b>			

**Southwestern Public Service Company**

**Fossil Fuel Purchased**

**Class** Gas  
**Plant** Nichols  
**Supplier** El Paso Natural Gas

Line No.	MONTH		(1) UNADJUSTED	(2) ADJUSTMENTS	(3) ADJUSTED
1	October 2019	\$			
2		MMBTU			
3		\$/MMBTU			
4	November 2019	\$			
5		MMBTU			
6		\$/MMBTU			
7	December 2019	\$			
8		MMBTU			
9		\$/MMBTU			
10	January 2020	\$			
11		MMBTU			
12		\$/MMBTU			
13	February 2020	\$			
14		MMBTU			
15		\$/MMBTU			
16	March 2020	\$			
17		MMBTU			
18		\$/MMBTU			
19	April 2020	\$			
20		MMBTU			
21		\$/MMBTU			
22	May 2020	\$			
23		MMBTU			
24		\$/MMBTU			
25	June 2020	\$			
26		MMBTU			
27		\$/MMBTU			
28	July 2020	\$			
29		MMBTU			
30		\$/MMBTU			
31	August 2020	\$			
32		MMBTU			
33		\$/MMBTU			
34	September 2020	\$			
35		MMBTU			
36		\$/MMBTU			
37	<b>Total</b>	\$			
38		MMBTU			
39		\$/MMBTU			

**Southwestern Public Service Company**

**Fossil Fuel Purchased**

**Class** Gas  
**Plant** Nichols  
**Supplier** Northern Natural Gas

Line No.	MONTH		(1) UNADJUSTED	(2) ADJUSTMENTS	(3) ADJUSTED
1	October 2019	\$			
2		MMBTU			
3		\$/MMBTU			
4	November 2019	\$			
5		MMBTU			
6		\$/MMBTU			
7	December 2019	\$			
8		MMBTU			
9		\$/MMBTU			
10	January 2020	\$			
11		MMBTU			
12		\$/MMBTU			
13	February 2020	\$			
14		MMBTU			
15		\$/MMBTU			
16	March 2020	\$			
17		MMBTU			
18		\$/MMBTU			
19	April 2020	\$			
20		MMBTU			
21		\$/MMBTU			
22	May 2020	\$			
23		MMBTU			
24		\$/MMBTU			
25	June 2020	\$			
26		MMBTU			
27		\$/MMBTU			
28	July 2020	\$			
29		MMBTU			
30		\$/MMBTU			
31	August 2020	\$			
32		MMBTU			
33		\$/MMBTU			
34	September 2020	\$			
35		MMBTU			
36		\$/MMBTU			
37	<b>Total</b>	<b>\$</b>			
38		<b>MMBTU</b>			
39		<b>\$/MMBTU</b>			

**Southwestern Public Service Company**

**Fossil Fuel Purchased**

**Class** Gas  
**Plant** Nichols  
**Supplier** Westex

Line No.	MONTH		(1) UNADJUSTED	(2) ADJUSTMENTS	(3) ADJUSTED
1	October 2019	\$			
2		MMBTU			
3		\$/MMBTU			
4	November 2019	\$			
5		MMBTU			
6		\$/MMBTU			
7	December 2019	\$			
8		MMBTU			
9		\$/MMBTU			
10	January 2020	\$			
11		MMBTU			
12		\$/MMBTU			
13	February 2020	\$			
14		MMBTU			
15		\$/MMBTU			
16	March 2020	\$			
17		MMBTU			
18		\$/MMBTU			
19	April 2020	\$			
20		MMBTU			
21		\$/MMBTU			
22	May 2020	\$			
23		MMBTU			
24		\$/MMBTU			
25	June 2020	\$			
26		MMBTU			
27		\$/MMBTU			
28	July 2020	\$			
29		MMBTU			
30		\$/MMBTU			
31	August 2020	\$			
32		MMBTU			
33		\$/MMBTU			
34	September 2020	\$			
35		MMBTU			
36		\$/MMBTU			
37	<b>Total</b>	<b>\$</b>			
38		<b>MMBTU</b>			
39		<b>\$/MMBTU</b>			

**Southwestern Public Service Company**

**Fossil Fuel Purchased**

**Class** Gas  
**Plant** Plant X  
**Supplier** El Paso Natural Gas

Line No.	MONTH		(1) UNADJUSTED	(2) ADJUSTMENTS	(3) ADJUSTED
1	October 2019	\$			
2		MMBTU			
3		\$/MMBTU			
4	November 2019	\$			
5		MMBTU			
6		\$/MMBTU			
7	December 2019	\$			
8		MMBTU			
9		\$/MMBTU			
10	January 2020	\$			
11		MMBTU			
12		\$/MMBTU			
13	February 2020	\$			
14		MMBTU			
15		\$/MMBTU			
16	March 2020	\$			
17		MMBTU			
18		\$/MMBTU			
19	April 2020	\$			
20		MMBTU			
21		\$/MMBTU			
22	May 2020	\$			
23		MMBTU			
24		\$/MMBTU			
25	June 2020	\$			
26		MMBTU			
27		\$/MMBTU			
28	July 2020	\$			
29		MMBTU			
30		\$/MMBTU			
31	August 2020	\$			
32		MMBTU			
33		\$/MMBTU			
34	September 2020	\$			
35		MMBTU			
36		\$/MMBTU			
37	<b>Total</b>	<b>\$</b>			
38		<b>MMBTU</b>			
39		<b>\$/MMBTU</b>			

**Southwestern Public Service Company**

**Fossil Fuel Purchased**

**Class** Gas  
**Plant** Plant X  
**Supplier** Northern Natural Gas

Line No.	MONTH		(1) UNADJUSTED	(2) ADJUSTMENTS	(3) ADJUSTED
1	October 2019	\$			
2		MMBTU			
3		\$/MMBTU			
4	November 2019	\$			
5		MMBTU			
6		\$/MMBTU			
7	December 2019	\$			
8		MMBTU			
9		\$/MMBTU			
10	January 2020	\$			
11		MMBTU			
12		\$/MMBTU			
13	February 2020	\$			
14		MMBTU			
15		\$/MMBTU			
16	March 2020	\$			
17		MMBTU			
18		\$/MMBTU			
19	April 2020	\$			
20		MMBTU			
21		\$/MMBTU			
22	May 2020	\$			
23		MMBTU			
24		\$/MMBTU			
25	June 2020	\$			
26		MMBTU			
27		\$/MMBTU			
28	July 2020	\$			
29		MMBTU			
30		\$/MMBTU			
31	August 2020	\$			
32		MMBTU			
33		\$/MMBTU			
34	September 2020	\$			
35		MMBTU			
36		\$/MMBTU			
37	<b>Total</b>	<b>\$</b>			
38		<b>MMBTU</b>			
39		<b>\$/MMBTU</b>			

**Southwestern Public Service Company**

**Fossil Fuel Purchased**

**Class** Gas  
**Plant** Plant X  
**Supplier** Westex

Line No.	MONTH		(1) UNADJUSTED	(2) ADJUSTMENTS	(3) ADJUSTED
1	October 2019	\$			
2		MMBTU			
3		\$/MMBTU			
4	November 2019	\$			
5		MMBTU			
6		\$/MMBTU			
7	December 2019	\$			
8		MMBTU			
9		\$/MMBTU			
10	January 2020	\$			
11		MMBTU			
12		\$/MMBTU			
13	February 2020	\$			
14		MMBTU			
15		\$/MMBTU			
16	March 2020	\$			
17		MMBTU			
18		\$/MMBTU			
19	April 2020	\$			
20		MMBTU			
21		\$/MMBTU			
22	May 2020	\$			
23		MMBTU			
24		\$/MMBTU			
25	June 2020	\$			
26		MMBTU			
27		\$/MMBTU			
28	July 2020	\$			
29		MMBTU			
30		\$/MMBTU			
31	August 2020	\$			
32		MMBTU			
33		\$/MMBTU			
34	September 2020	\$			
35		MMBTU			
36		\$/MMBTU			
37	<b>Total</b>	\$			
38		MMBTU			
39		\$/MMBTU			

**Southwestern Public Service Company**

**Fossil Fuel Purchased**

**Class** Gas  
**Plant** Plant X  
**Supplier** Natural Gas Pipeline Company

Line No.	MONTH		(1) UNADJUSTED	(2) ADJUSTMENTS	(3) ADJUSTED
1	October 2019	\$			
2		MMBTU			
3		\$/MMBTU			
4	November 2019	\$			
5		MMBTU			
6		\$/MMBTU			
7	December 2019	\$			
8		MMBTU			
9		\$/MMBTU			
10	January 2020	\$			
11		MMBTU			
12		\$/MMBTU			
13	February 2020	\$			
14		MMBTU			
15		\$/MMBTU			
16	March 2020	\$			
17		MMBTU			
18		\$/MMBTU			
19	April 2020	\$			
20		MMBTU			
21		\$/MMBTU			
22	May 2020	\$			
23		MMBTU			
24		\$/MMBTU			
25	June 2020	\$			
26		MMBTU			
27		\$/MMBTU			
28	July 2020	\$			
29		MMBTU			
30		\$/MMBTU			
31	August 2020	\$			
32		MMBTU			
33		\$/MMBTU			
34	September 2020	\$			
35		MMBTU			
36		\$/MMBTU			
37	<b>Total</b>	<b>\$</b>			
38		<b>MMBTU</b>			
39		<b>\$/MMBTU</b>			

**Southwestern Public Service Company**

**Fossil Fuel Purchased**

**Class** Gas  
**Plant** Riverview  
**Supplier** Raptor

Line No.	MONTH		(1) UNADJUSTED	(2) ADJUSTMENTS	(3) ADJUSTED
1	October 2019	\$			
2		MMBTU			
3		\$/MMBTU			
4	November 2019	\$			
5		MMBTU			
6		\$/MMBTU			
7	December 2019	\$			
8		MMBTU			
9		\$/MMBTU			
10	January 2020	\$			
11		MMBTU			
12		\$/MMBTU			
13	February 2020	\$			
14		MMBTU			
15		\$/MMBTU			
16	March 2020	\$			
17		MMBTU			
18		\$/MMBTU			
19	April 2020	\$			
20		MMBTU			
21		\$/MMBTU			
22	May 2020	\$			
23		MMBTU			
24		\$/MMBTU			
25	June 2020	\$			
26		MMBTU			
27		\$/MMBTU			
28	July 2020	\$			
29		MMBTU			
30		\$/MMBTU			
31	August 2020	\$			
32		MMBTU			
33		\$/MMBTU			
34	September 2020	\$			
35		MMBTU			
36		\$/MMBTU			
37	<b>Total</b>	<b>\$</b>			
38		<b>MMBTU</b>			
39		<b>\$/MMBTU</b>			

**Southwestern Public Service Company**

**Fossil Fuel Purchased**

**Class** Gas  
**Plant** Tolk  
**Supplier** Northern Natural Gas

Line No.	MONTH		(1) UNADJUSTED	(2) ADJUSTMENTS	(3) ADJUSTED
1	October 2019	\$			
2		MMBTU			
3		\$/MMBTU			
4	November 2019	\$			
5		MMBTU			
6		\$/MMBTU			
7	December 2019	\$			
8		MMBTU			
9		\$/MMBTU			
10	January 2020	\$			
11		MMBTU			
12		\$/MMBTU			
13	February 2020	\$			
14		MMBTU			
15		\$/MMBTU			
16	March 2020	\$			
17		MMBTU			
18		\$/MMBTU			
19	April 2020	\$			
20		MMBTU			
21		\$/MMBTU			
22	May 2020	\$			
23		MMBTU			
24		\$/MMBTU			
25	June 2020	\$			
26		MMBTU			
27		\$/MMBTU			
28	July 2020	\$			
29		MMBTU			
30		\$/MMBTU			
31	August 2020	\$			
32		MMBTU			
33		\$/MMBTU			
34	September 2020	\$			
35		MMBTU			
36		\$/MMBTU			
37	<b>Total</b>	<b>\$</b>			
38		<b>MMBTU</b>			
39		<b>\$/MMBTU</b>			

**Southwestern Public Service Company**

**Fossil Fuel Purchased**

**Class** Gas  
**Plant** Tolk  
**Supplier** Westex

Line			(1)	(2)	(3)
No.	MONTH		UNADJUSTED	ADJUSTMENTS	ADJUSTED
1	October 2019	\$			
2		MMBTU			
3		\$/MMBTU			
4	November 2019	\$			
5		MMBTU			
6		\$/MMBTU			
7	December 2019	\$			
8		MMBTU			
9		\$/MMBTU			
10	January 2020	\$			
11		MMBTU			
12		\$/MMBTU			
13	February 2020	\$			
14		MMBTU			
15		\$/MMBTU			
16	March 2020	\$			
17		MMBTU			
18		\$/MMBTU			
19	April 2020	\$			
20		MMBTU			
21		\$/MMBTU			
22	May 2020	\$			
23		MMBTU			
24		\$/MMBTU			
25	June 2020	\$			
26		MMBTU			
27		\$/MMBTU			
28	July 2020	\$			
29		MMBTU			
30		\$/MMBTU			
31	August 2020	\$			
32		MMBTU			
33		\$/MMBTU			
34	September 2020	\$			
35		MMBTU			
36		\$/MMBTU			
37	<b>Total</b>	<b>\$</b>			
38		<b>MMBTU</b>			
39		<b>\$/MMBTU</b>			

**Southwestern Public Service Company**

**Fossil Fuel Purchased**

**Class** Gas  
**Plant** Tolk  
**Supplier** El Paso Natural Gas

Line No.	MONTH		(1) UNADJUSTED	(2) ADJUSTMENTS	(3) ADJUSTED
1	October 2019	\$			
2		MMBTU			
3		\$/MMBTU			
4	November 2019	\$			
5		MMBTU			
6		\$/MMBTU			
7	December 2019	\$			
8		MMBTU			
9		\$/MMBTU			
10	January 2020	\$			
11		MMBTU			
12		\$/MMBTU			
13	February 2020	\$			
14		MMBTU			
15		\$/MMBTU			
16	March 2020	\$			
17		MMBTU			
18		\$/MMBTU			
19	April 2020	\$			
20		MMBTU			
21		\$/MMBTU			
22	May 2020	\$			
23		MMBTU			
24		\$/MMBTU			
25	June 2020	\$			
26		MMBTU			
27		\$/MMBTU			
28	July 2020	\$			
29		MMBTU			
30		\$/MMBTU			
31	August 2020	\$			
32		MMBTU			
33		\$/MMBTU			
34	September 2020	\$			
35		MMBTU			
36		\$/MMBTU			
37	<b>Total</b>	<b>\$</b>			
38		<b>MMBTU</b>			
39		<b>\$/MMBTU</b>			

**Southwestern Public Service Company**

**Fossil Fuel Purchased**

**Class** Oil  
**Plant** Quay County  
**Supplier** Various

Line No.	MONTH		(1) UNADJUSTED	(2) ADJUSTMENTS	(3) ADJUSTED
1	October 2019	\$			
2		MMBTU			
3		\$/MMBTU			
4	November 2019	\$			
5		MMBTU			
6		\$/MMBTU			
7	December 2019	\$			
8		MMBTU			
9		\$/MMBTU			
10	January 2020	\$			
11		MMBTU			
12		\$/MMBTU			
13	February 2020	\$			
14		MMBTU			
15		\$/MMBTU			
16	March 2020	\$			
17		MMBTU			
18		\$/MMBTU			
19	April 2020	\$			
20		MMBTU			
21		\$/MMBTU			
22	May 2020	\$			
23		MMBTU			
24		\$/MMBTU			
25	June 2020	\$			
26		MMBTU			
27		\$/MMBTU			
28	July 2020	\$			
29		MMBTU			
30		\$/MMBTU			
31	August 2020	\$			
32		MMBTU			
33		\$/MMBTU			
34	September 2020	\$			
35		MMBTU			
36		\$/MMBTU			
37	<b>Total</b>	<b>\$</b>			
38		<b>MMBTU</b>			
39		<b>\$/MMBTU</b>			

**Southwestern Public Service Company**

**Fossil Fuel Purchased**

**Class** Oil  
**Plant** Jones  
**Supplier** Various

Line No.	MONTH		(1) UNADJUSTED	(2) ADJUSTMENTS	(3) ADJUSTED
1	October 2019	\$			
2		MMBTU			
3		\$/MMBTU			
4	November 2019	\$			
5		MMBTU			
6		\$/MMBTU			
7	December 2019	\$			
8		MMBTU			
9		\$/MMBTU			
10	January 2020	\$			
11		MMBTU			
12		\$/MMBTU			
13	February 2020	\$			
14		MMBTU			
15		\$/MMBTU			
16	March 2020	\$			
17		MMBTU			
18		\$/MMBTU			
19	April 2020	\$			
20		MMBTU			
21		\$/MMBTU			
22	May 2020	\$			
23		MMBTU			
24		\$/MMBTU			
25	June 2020	\$			
26		MMBTU			
27		\$/MMBTU			
28	July 2020	\$			
29		MMBTU			
30		\$/MMBTU			
31	August 2020	\$			
32		MMBTU			
33		\$/MMBTU			
34	September 2020	\$			
35		MMBTU			
36		\$/MMBTU			
37	<b>Total</b>	<b>\$</b>			
38		<b>MMBTU</b>			
39		<b>\$/MMBTU</b>			

**Southwestern Public Service Company**

**Fossil Fuel Purchased**

**Class** Oil  
**Plant** Plant X  
**Supplier** Various

Line No.	MONTH		(1) UNADJUSTED	(2) ADJUSTMENTS	(3) ADJUSTED
1	October 2019	\$			
2		MMBTU			
3		\$/MMBTU			
4	November 2019	\$			
5		MMBTU			
6		\$/MMBTU			
7	December 2019	\$			
8		MMBTU			
9		\$/MMBTU			
10	January 2020	\$			
11		MMBTU			
12		\$/MMBTU			
13	February 2020	\$			
14		MMBTU			
15		\$/MMBTU			
16	March 2020	\$			
17		MMBTU			
18		\$/MMBTU			
19	April 2020	\$			
20		MMBTU			
21		\$/MMBTU			
22	May 2020	\$			
23		MMBTU			
24		\$/MMBTU			
25	June 2020	\$			
26		MMBTU			
27		\$/MMBTU			
28	July 2020	\$			
29		MMBTU			
30		\$/MMBTU			
31	August 2020	\$			
32		MMBTU			
33		\$/MMBTU			
34	September 2020	\$			
35		MMBTU			
36		\$/MMBTU			
37	<b>Total</b>	\$			
38		MMBTU			
39		\$/MMBTU			

**Note:** As discussed in the testimony of William A. Grant, Southwestern Public Service Company ("SPS") has not filed a fuel reconciliation with its current base rate case in accordance with the Order in Project No. 41905 and 16 Tex. Admin. Code ("TAC") § 25.236 as revised in that project. Therefore, fuel reconciliation data is not applicable. Additionally, SPS is not proposing a new fuel factor under 16 TAC § 25.237. Therefore, rate year data is not applicable.

## **Southwestern Public Service Company**

### **Nonrecurring Fuel and Purchase Power Expenses**

Southwestern Public Service Company (“SPS”) has not filed a fuel reconciliation with its current base rate case in accordance with the Order in Project No. 41905 and 16 Tex. Admin. Code § 25.236 as revised in that project. However, SPS has included this schedule in the rate filing package because it remains applicable to information presented in SPS’s base rate case.

SPS had no nonrecurring base rate fuel and purchased power expenses during the Test Year (October 1, 2019 through September 30, 2020) or the Updated Test Year (October 1, 2020 through December 31, 2020).

## **Southwestern Public Service Company**

### **Fuel and Purchase Power Procurement Practices**

As discussed in the testimony of Southwestern Public Service Company (“SPS”) witness William A. Grant, SPS has not filed a fuel reconciliation with its current base rate case in accordance with the Order in Project No. 41905 and 16 Tex. Admin. Code § 25.236 as revised in that project. However, SPS has included this schedule in the filing package because it remains applicable to information presented in SPS’s base rate case.

To ensure that SPS meets its overall goal of purchasing power and energy to provide its customers with the lowest reasonable cost of available power considering power supply reliability and flexibility, predicted market conditions, and electrical constraints, SPS utilizes the following practices:

- Maximizing the competition between fuel suppliers;
- Purchasing fuel requirements under a portfolio approach;
- Maximizing fuel supply reliability and flexibility;
- Actively promoting beneficial changes in the fuel supply and fuel related industries through legislative, judicial and regulatory avenues;
- Having an informed base of knowledge concerning fuel supply, demand, pricing and other related issues affecting SPS and its customers; and
- Regular evaluation of fuel quantity and quality needs versus projected demand through fuel planning and feedback from operational personnel.

Procurement practices specific to various fuel types and purchased power are discussed below. The procurement practices that result in costs recovered through SPS’s base rates are those for non-renewable long-term (a term of one year or longer) purchased power agreements (“PPAs”) and coal.

### **Natural Gas**

SPS purchases natural gas for both long and short-term needs using a variety of methods including a Request for Proposal (“RFP”) process, daily phone and instant messaging polling of suppliers, e-mail solicitation and Internet based on-line trading platforms.

### **Long Term Procurement Practices**

Long-term gas or base supplies are defined as supplies that are contracted for a period of longer than one month. All long-term supplies are obtained using an RFP solicitation process as described below.

Detailed RFP packages are prepared and sent to potential suppliers via e-mail on several different occasions during each year. RFP packages are typically sent to twenty to thirty different suppliers with a response rate varying from as low as nine to as high as twenty. The

response rate depends on what time frame is being bid on and the supply areas being requested during that time frame.

Upon receipt of the bids, a quantitative analysis is made of each proposal in relation to other bids to arrive at a short list of suppliers that would provide the lowest aggregate cost of gas. Once the best potential suppliers are identified, SPS uses the bids as the basis for negotiating the final agreements with the selected suppliers.

### **Short-Term Procurement Practices**

Short-term procurement practices are used for supply needs of one month or shorter, or “Spot Gas.”

For monthly supplies, where there is greater lead-time for securing supplies, the more formal RFP process is used, and more suppliers are contacted as described above. In selecting spot suppliers, SPS evaluates responses based on price, quantity, and operational considerations such as swing requirements, nomination procedures, pipeline flow restrictions at the plant, and availability of transportation.

For daily supplies, where lead-time is short, SPS uses the telephone, email, the Inter-Continental Exchange on-line trading platform, or instant messaging to acquire its short-term gas supply needs. Although SPS strives to make sure that multiple suppliers compete for its daily spot gas needs, the daily spot market is very dynamic, and the price is subject to change minute by minute. Particularly in the day market, if a bid is not accepted at the time offered, spot deals may not be available at the same price or may not be available at all a short while later. For this reason, it is not practical or prudent to conduct a comprehensive bid solicitation for daily supplies. This does not imply that SPS enters into spot market deals arbitrarily and without market knowledge. SPS’s gas buyers maintain an awareness of the market on a continuous basis through their active role in the daily gas market, which includes monitoring on-line trading platforms for current prices, and reviewing trade publications and other relevant information. Additionally, the buyers are aware of other supply options, including the quantity and price of natural gas available each day under the term agreements and the alternative cost of fuel oil. This knowledge and awareness help ensure that SPS’s purchases of daily spot gas are reasonable and in the best interest of the customer.

All purchases are covered by written contracts. No spot purchases are made unless a signed contract exists between SPS and the supplier. The types of contracts used include Gas Industry Standards Board (“GISB”) and North American Energy Standards Board (“NAESB”) contracts. All agreements contain general terms and conditions but no specific quantities or pricing. Quantities and pricing are determined through the bidding procedure described above. Once agreements are reached, the price and quantity are recorded. Exhibit As to the spot agreements detailing the date, quantity, price, and delivery point are prepared and sent daily to each supplier for signature.

### **Emergency Inter-Company Procurement Practices**

SPS has a policy to provide guidance in the event an “Emergency Fuel Sale” would need to be made between Xcel Energy operating companies to maintain reliable operations of the receiving Operating Company’s power generating and distribution activities or gas distribution activities for its firm customers. SPS has not exercised this policy since well before the last Fuel Reconciliation.

### **Fuel Oil**

Purchases of fuel oil are made from multiple suppliers who have access to supplies and truck-based transportation to the plants where the fuel oil is to be burned. SPS continually monitors the New York Mercantile Exchange (“NYMEX”) futures contracts for fuel oil to keep abreast of pricing changes. When oil-fired generation is required, SPS solicits bids from available suppliers and arranges for additional supplies to be delivered to the plants from local suppliers.

### **Purchased Power**

SPS is committed to providing its customers with the lowest reasonable cost of power available. From time to time, SPS enters into PPAs to satisfy the capacity and energy needs of its retail and wholesale customers;

SPS uses a number of strategies to ensure that it obtains the lowest reasonable cost of energy through its PPAs. SPS seeks and enters into PPAs when the resource planning process determines a need for the resource(s). The Resource Planning personnel prepare requests for proposals, conduct competitive resource solicitations, evaluate bids to identify the most cost-effective resource to meet the need in a timely manner, and clarify bid details. Please refer to the Direct Testimony of Bennie F. Weeks for discussion of the Resource Planning.

Important elements of the work of the Purchased Power personnel following the negotiation of PPAs include prudently administering PPAs, including ensuring that power deliveries meet the terms of the PPA throughout the contract period, and that each PPA invoice is accurate. Invoice verification is accomplished through coordination between Purchased Power and Commercial Accounting Services personnel who compare invoiced deliveries with the SPS revenue-meter readings or scheduled quantities, as applicable for each PPA; confirm that the invoice pricing complies with the applicable provisions of the contract; and check that the invoice calculations are mathematically correct. Please refer to the Direct Testimony of Jeffrey C. Klein for discussion of the Purchased Power administration practices.

SPS’s flexibility to dispatch energy from the unit contingent capacity it purchases from fossil-fueled generating facilities varies considerably depending on the specific provisions of each agreement. Some purchase agreements, like the agreement with Tokai, require SPS to receive and purchase the energy produced by the facility on a “must take” basis, i.e., with no dispatch flexibility. Other purchase agreements give SPS the right to manually dispatch the generating resource. Using the terms specified in each agreement to calculate the applicable energy charges, the energy available from each agreement is offered into the Southwest Power Pool

(“SPP”) Day-Ahead and Real-Time Energy markets. SPP integrates all market participant unit offers to deliver a least cost plan for the next day in the case of Day-Ahead markets or the next hour in the case of the Real-Time Balancing Market.

## **Coal**

SPS procures coal from TUCO Inc. (“TUCO”) for SPS’s two coal-fueled electric generating facilities, Harrington and Tolk Stations, under a sole supplier contract for each station (Coal Supply Agreements (“CSA”)). The Tolk contract was executed on January 12, 2018 (effective January 1, 2018) and is in effect until December 31, 2022. The Harrington contract was also executed on January 12, 2018 (effective January 1, 2018), and is in effect until December 31, 2022. TUCO arranges for the purchase, receipt, transportation, unloading, handling, crushing, weighing, and delivery of coal to the bunkers to meet SPS’s requirements. TUCO is responsible for negotiating and administering contracts with coal suppliers, transporters, and handlers. The Fuel Supply Operations Department’s responsibilities on behalf of SPS include determining SPS’s coal needs, administering the CSAs, and overseeing and reviewing TUCO’s procurement of coal and transportation services and TUCO’s administration of its contracts.

SPS purchases coal from TUCO for a delivered price at the bunkers, similar to the utility industry practice of purchasing gas delivered to a generating unit gas header immediately upstream of the boilers. Thus, SPS’s delivered price of coal is the sum of TUCO’s: (a) Free on Board (“FOB”) mine cost of coal; (b) cost of transportation from the mine to the unloading facilities; (c) costs incurred for furnishing railcars and for handling, storing, crushing, processing, weighing, and delivering coal to SPS’s bunkers; (d) assessments and taxes (except federal and state income taxes); (e) cost of financing coal inventories; (f) cost of coal losses; and (g) margin.

SPS projects the amount of coal needed for generation and provides these projections to TUCO. TUCO then determines if sufficient coal is available for purchase under its existing coal supply contracts taking into consideration TUCO’s stockpile levels, current market conditions and any optional tonnage that might be available under their coal supply contracts. At any given time TUCO attempts to have under contract the following approximate percentages of SPS’s coal needs: 60% of next year’s need; 30% of the second year’s need, and 15% of the third year’s need. Each year, TUCO issues new RFP seeking bids for several future years. TUCO evaluates the bids and then begins to firm-up the supply for the next three years by issuing Confirmation Notices. TUCO is not required to accept a bid from any particular supplier and attempts to choose among the quantities and prices offered so as to produce the lowest total coal cost. This process allows TUCO and SPS to take advantage of changes in market conditions over time.

SPS provides oversight and operational input into the bid evaluation process and TUCO’s administration of the contracts. Written contracts are utilized for all coal purchases.

**Southwestern Public Service Company**

**Fuel and Purchase Power Committees**

<b>Transaction Review Committee</b>		
<u>Frequency of Meeting:</u> Weekly (as needed)		
<u>Specific Committee Responsibilities:</u> The Transaction Review Committee (“TRC”) membership consists of the Vice President (“VP”) of Commercial Operations, the VP & Chief Risk Officer, the VP & Controller, the Senior Director, Regulatory Accounting and an Assistant General Counsel. The TRC members are supported by various staff members reporting to them as needed. Teleconferences are scheduled once each week (if there are agenda items) for the purposes of reviewing significant wholesale purchases and sales of electricity, natural gas, coal and other fuels and related services in accordance with procedure. While the TRC is scheduled to meet every week, the meeting is not held if 1) there are no transactions to review; or 2) the transactions are adequately and timely reviewed using email communications prior to Thursday of any given week. The TRC is a component of the Contract Development, Approval, and Delegation review and approval process.		
<u>Specific Committee Authority:</u> The TRC performs a due diligence review of various categories of significant wholesale transactions, taking into account regulatory, reliability, and financial concerns. TRC approval is required prior to committing to and executing a binding agreement.		
<b>Membership</b>		
<b>Name</b>	<b>Title</b>	<b>Company</b>
Tom Imbler, John Welch	VP Commercial Operations	Xcel Energy Services, Inc.
Karen Hyde	VP & Chief Risk Officer	Xcel Energy Services, Inc.
Jeff Savage	VP & Controller	Xcel Energy Services, Inc.
Michael Rodriguez	Senior Director Regulatory Accounting	Xcel Energy Services, Inc.
Tim Dowdy, David McGann, Peter Glass	Assistant General Counsel	Xcel Energy Services, Inc.

<b>TRC Meetings Convened During the Test Year</b> (October 1, 2019 through September 30, 2020)	
October 2019: 10 <sup>th</sup> , 17 <sup>th</sup> , 24 <sup>th</sup> , 31 <sup>st</sup>	April 2020: None
November 2019: 21 <sup>st</sup>	May 2020: None
December 2019: None	June 2020: None
January 2020: None	July 2020: 16 <sup>th</sup> , 23 <sup>rd</sup>
February 2020: 13 <sup>th</sup>	August 2020: 20 <sup>th</sup> , 27 <sup>th</sup>
March 2020: 5 <sup>th</sup> , 12 <sup>th</sup>	September 2020: None

**Note:** As discussed in the testimony of William A. Grant, Southwestern Public Service Company (“SPS”) has not filed a fuel reconciliation with its current base rate case in accordance with the Order in Project No. 41905 and 16 Tex. Admin. Code § 25.236 as revised in that project. However, SPS has included this schedule in the filing package because it remains applicable to information presented in SPS’s base rate case.

## Southwestern Public Service Company

### Fuel and Fuel Related Contracts

**October 1, 2019 – September 30, 2020 and October 1, 2020 – December 31, 2020**

As discussed in the Direct Testimony of William A. Grant, Southwestern Public Service Company (“SPS”) has not filed a fuel reconciliation with its current base rate case in accordance with the Order in Project No. 41905 and 16 Tex. Admin. Code § 25.236 as revised in that project. SPS has included this schedule in the rate filing package with only the information that remains applicable to information presented in SPS’s base rate case.

### Purchased Power:

Issue	Description
Counterparty	Borger Energy Associates, L.P.
Facility Name	Blackhawk Station
Ownership	Borger Energy Associates
Location of Facility	Borger, Texas
Facility Type	Gas
Qualified Facility	Yes
Equipment	Westinghouse 501 D5A turbines Unit 1 Generator – Westac (rewound twice) Unit 2 Generator – Brush (replaced Westac in 2005)
Capacity	223.370 MW (summer 2020 test)
Contract Date	May 23, 1997
Amendments	Letter Agreement dated 2/12/98
Term	25-year term/June 11, 2024. SPS has the option to extend the initial 25 -year contract term for an additional ten (10) years.
Commercial Operation Date	June 12, 1999 (Cogeneration Operation Date—Phase II)
Interconnection/ Delivery Point/ Transmission Service	115 kV bus of each generating unit’s step-up transformer. Firm network transmission service.
Operating Committee	Section 9.2: One representative and one alternate.
Operating Procedures	Section 9.2: Procedures are in place and dated July 31, 2003.
Meter Test Schedule	Section 8.2: Electric: SPS shall test meters annually.

UCC Recertification Due	Section 6.5: UCC Financing Statement is in place. Last filing made 1/15/2020.
Evidence of Insurance	Article 13: To be provided annually. SPS to be named as additional insured on the policies.
Confidentiality	Section 12.4: No disclosure of designated non-public information except to comply with applicable law, order, regulation or required in connection with Arbitration. Party shall notify other party of disclosure and seek to limit the disclosure.
Right of First Offer and Purchase Option Agreement	Article 7: SPS may (1) terminate the PPA after the sixth Contract Year with a defined Termination Payment, (2) purchase the Facility beginning in the sixth year equal to its Fair Market Value, and (3) purchase the Facility at end of the Initial Term or Extended Term at an amount equal to Fair Market Value. SPS also has the first right of refusal in the any potential sale of Seller's interest.
Option to Extend	Section 3.1: SPS has the option to extend the initial twenty-five (25) year contract term ("Initial Term") for an additional ten (10) years ("Extended Term") with three (3) years notice prior to the end of the Initial Term.
Subordinated Mortgage	Section 6.5: Subordinated mortgage entered into 5/1/1998.
Security	N/A
Damage Cap	Section 6.3. Defined Capacity Shortfall Damages apply for any capacity shortfall during On-Peak Months.
Fixed Charges	<b>Capacity Price:</b> \$2.753/kW-month, as of June 12, 2020 (increases annually based on Schedule F-1 in PPA); <b>Fixed O&amp;M:</b> \$1.621/kW-month, as of June 12, 2020 (Rate adjusts annually on June 12 based on annual change in GDP-IPD index).
Energy Payment Rate	<b>Variable O&amp;M Price:</b> \$2.554/MWh, as of June 12, 2020 (Adjusts annually on June 12 based on annual change in GDP-IPD index). Additional charges calculated based on gas price.
Other Charges	<b>Gas Reservation Charge:</b> \$15,500/month (fixed); <b>Seller's Charge:</b> \$482.71/month as of June 12, 2020 (Credit to SPS; Adjusts annually on June 12 based on annual changes in GDP-IPD index).
Billing/Payment	SPS prepares a monthly statement within 10 calendar days after the end of the month. Payment is due 15 days after receipt of Borger's monthly invoice.

Summer Capacity Test Schedule/Results	Section 2.6(E): Annually approximately one year apart, using SPP criteria set forth in Schedule C-1, C-2 and Operating Procedures. Most recent test: 2020: 223.370 MW.
Winter Capacity Test Schedule/Results	N/A
Heat Rate Test Schedule/Results	N/A
Predicted Heat Rate	Guaranteed (contract) HR 7,000-7,300 Btu/kWh as set forth in Schedule F-4.
Dispatchability Test Schedule/Results	Operating Procedures: Periodically
Other Required Tests	N/A
Outage Schedules	Section 9.3: Annual Maintenance Schedule for the following year and Maintenance Schedule for the following four years due by July 1 each year.
Date of Summary	11/17/2020

Issue	Description
Counterparty	Tokai Carbon CB Ltd. ("Tokai") (previously known as Sid Richardson Carbon, Ltd.)
Facility Name	Borger Plant
Ownership	Tokai Carbon CB Ltd.
Location of Facility	Borger, Texas
Facility Type	Carbon black waste generating facility
Qualified Facility	Yes
Equipment	N/A
Capacity	Up to 25 MW
Contract Date	July 30, 2001
Amendments	First Amendment dated July 17, 2007; Second Amendment dated February 19, 2015.
Term	20-year term/August 1, 2001-July 31, 2021
Commercial Operation Date	N/A
Interconnection and Point of Delivery	The point at which the 69 kV line crosses the property boundary between SPS and Tokai. Tokai will reimburse SPS

	for major repairs to the breaker up to \$3,000 within 30 days of invoicing by SPS.
Operating Committee	N/A
Operating Procedures	N/A
Meter Tests	Section 2.04: SPS will test in accordance with its normal practices.
UCC Recertification Due	N/A
Evidence of Insurance	N/A
Confidentiality	N/A
Right of First Offer and Purchase Option Agreement	N/A
Option to Extend	N/A
Subordinated Mortgage	N/A
Security	Section 2.10: SPS has the right to require a deposit not to exceed two times the dollar amount of the average net difference of sales and purchases from Tokai - records reflect that a deposit was never required.
Damage Cap	N/A
Demand Charge	\$4.10/kW-mo. fixed for term.
Energy Charge	\$2.00/MWh fixed for term.
Admin Charge	(\$710.00)
Summer Capacity Test	Section 2.11: required every 3 years at Tokai's expense. Most recent test: 6/14/17 – 5,652 kW (2020 test delayed due to COVID-19 pandemic).
Winter Capacity Test	N/A
Heat Rate Tests	N/A
Predicted Heat Rate	N/A
Dispatchability Test	N/A
Other Required Tests	N/A
Outage Schedules	Section 3.05: maintenance outages must be scheduled 60 days in advance.

Notes/Comments	Tokai sells to SPS all power produced less the power needed to operate the plant.
Date of Summary	11/17/2020

Issue	Description
Counterparty	Lea Power Partners, LLC
Facility Name	Hobbs Generating Station
Ownership	Harbert Power Fund V, LLC
Location of Facility	Lea County, New Mexico, a couple miles west of the town of Hobbs
Facility Type	Natural gas fueled, combined cycle facility
Qualified Facility	No
Equipment	Two Mitsubishi MHI Frame 501F Combustion Turbines with chillers. GE D11 reheat steam turbine.
Capacity	604 MW Winter/502 MW Summer
Contract Date	October 20, 2006
Amendments	Amendment No. 1 dated April 4, 2007; Amendment No. 2 dated May 30, 2007; Amendment No. 3 dated September 23, 2008; Amendment No. 4 dated September 8, 2010; Amendment No. 5 dated June 10, 2014.
Term	25-year term /September 15, 2033
Commercial Operation Date	September 16, 2008
Interconnection and Point of Delivery	One combustion turbine and one steam turbine interconnected to the 115 kV line from Lea County Interchange to Denver City Sub. The other combustion turbine interconnected to the 230 kV line from Lea County Interchange to Midland Sub.
Operating Committee	Section 10.5: one representative and one alternate from each party.
Operating Procedures	Section 10.5: procedures dated September 16, 2008.
Meter Tests	Section 5.3: tested annually
UCC Recertification Due	N/A
Evidence of Insurance	Section 16.1: due June 1 of each year.
Confidentiality	N/A

Right of First Offer and Purchase Option Agreement	Section 20.19: exercisable any time after the 17th Commercial Operation Year (9/16/2025).
Option to Extend	No
Subordinated Mortgage	Section 11.2: dated 9/16/08
Security	LOC No. S326928M in the amount of \$37,750,000 expires 6/17/21. LOC No. LG/MIS/NY-069373 in the amount of \$37,750,000 expires 6/17/21.
Damage Cap	\$75.5M
Capacity Price	\$7.207/kW-month (fixed for term)
Energy Payment	\$2.30/MWh tolling charge as of May 1, 2020 (escalates annually on May 1).
Dispatchability Payment	\$0.25/kW-month (fixed for term)
Turbine Starts	\$4,970/start as of May 1, 2020 (escalates annually on May 1); first 25 starts at no charge.
Billing/Payment	Seller will provide invoice to SPS. Payment is due 15 business days after receipt of invoice.
Summer Capacity Test	Exhibit E: every 3 years (562,911 kW on 9/26/2019).
Winter Capacity Test	Exhibit E: every 3 years (633,999 kW on 1/22/2020).
Heat Rate Tests	Section 8.5: (7,284 Btu/kWh on 9/26/2019).
Predicted Heat Rate	7,728 Btu/kWh as of 9/26/2019.
Dispatchability Test	Exhibit A: periodically
Other Required Tests	N/A
Outage Schedules	Section 10.1: provided by February 1 of each year.
Date of Summary	11/17/2020

**Contract Summary**

**Supplier Name:** TUCO Inc.

**Fuel Type:** Coal

**Supplier Address:** 6900 West I-40 Suite 240  
Amarillo, TX 79106-2525

**Plant(s) Served:** Harrington

**Negotiation Date:** January 12, 2018, effective January 1, 2018. Please refer to WP I-4.

**Original Date of Supply or Service:** January 1, 2018.

**Term:** January 1, 2018 through December 31, 2022.

May be extended (one) 5-year period with the agreement of both parties with written notice at least 180 days prior to expiration of the agreement.

Buyer and Seller have the right to terminate this agreement on at least one (1) year's written notice to the other.

**Pricing Mechanism:** For each billing period, in dollars per ton, the sum of (a) cost of coal, including base price F.O.B. mine, with any quality or other adjustments (Coal Cost); (b) cost of transportation from the mine to the unloading facilities (Third Party Costs); (c) costs incurred for furnishing railcars and for handling, storing, crushing, processing, weighing, and delivering coal (Harrington CHSA Costs); and (d) Costs of coal losses; plus a monthly margin amount (See Section 7.1).

**Purchase Obligation:** Annual Quantity as determined on or before October 1, 2017, and by each subsequent October 1 during Term of Agreement by SPS to meet projected burn for following year. SPS shall also provide notice of reasonable estimate for upcoming year (Annual Quantity year) and two years subsequent to the Annual Quantity year. Quantities measured in terms of tons delivered.

**Maximum Quantities Available:** TUCO shall acquire by separate agreement coal sufficient to satisfy SPS's Annual Quantity requirements and such additional coal as may be necessary to provide a continuous supply of coal to meet Harrington's annual burn and inventory requirements.

**Economic Out Provision:** None.

**Delivery Point(s):** Coalbunkers at Harrington Station.

**Transportation Provision:** Fuel is purchased F.O.B. at the Point(s) of Delivery (Harrington bunkers) at price expressed in dollars MMBtu and includes all transportation fees to the Point(s) of Delivery. TUCO has entered into a transportation agreement with

the BNSF for transportation of coal supplies delivered under this Agreement. In addition, TUCO has entered into a contract with Savage Harrington Corporation to provide coal-handling services.

**Quality or Measurement:**

Coal to be within specified ranges for typical coal set forth in Exhibit B to the contract, including ranges for Btu/lb., Moisture, Ash, Sulfur, and Lbs. of SO<sub>2</sub>.

- Samples taken by TUCO per American Society of Testing and Materials (“ASTM”) standards; results reported in a monthly analysis prepared by SPS.
- Either party may question correctness of original analysis; commercial testing laboratory then used to do an independent analysis.
- SPS has right to have representative present to observe sampling.

**Accounting Procedures and Billing:**

- Seller shall use generally accepted accounting principles and per ton weight averaging determined at the close of each calendar month.
- Seller is to invoice on or before 8<sup>th</sup> day of each month.
- Invoices are due and payable on or before 1<sup>st</sup> working day after 15<sup>th</sup> day of month.
- All statements, billings, and payments shall be subject to correction within two years of the date of the invoice.
- Past due interest charges are assessed at 1% over prime.

**Force Majeure:** Force majeure clause is plant specific. May claim partial force majeure. Complete shutdown is not required.

**Contract Summary**

**Supplier Name:** TUCO Inc.

**Fuel Type:** Coal

**Supplier Address:** 6900 West I-40 Suite 240  
Amarillo, TX 79106-2525

**Plant(s) Served:** Tolk

**Negotiation Date:** January 12, 2018, effective January 1, 2018. Please refer to WP I-4.

**Original Date of Supply or Service:** January 1, 2018.

**Term:** January 1, 2018 through December 31, 2022.

May be extended (one) 5-year period with the agreement of both parties with written notice at least 180 days prior to expiration of the agreement.

Buyer and Seller have the right to terminate this agreement on at least one (1) year's written notice to the other.

**Pricing Mechanism:** For each billing period, in dollars per ton, the sum of (a) cost of coal, including base price F.O.B. mine, with any quality or other adjustments (Coal Cost); (b) cost of transportation from the mine to the unloading facilities (Third Party Costs); (c) costs incurred for furnishing railcars and for handling, storing, crushing, processing, weighing, and delivering coal (Harrington CHSA Costs); (d) Costs of coal losses; and (e) a monthly margin amount (See Section 7.1).

**Purchase Obligation:** Annual Quantity as determined on or before October 1, 2017, and by each subsequent October 1 during Term of Agreement by SPS to meet projected burn for following year. SPS shall also provide notice of reasonable estimate for upcoming year (Annual Quantity year) and two years subsequent to the Annual Quantity year. Quantities measured in terms of tons delivered.

**Maximum Quantities Available:** TUCO shall acquire by separate agreement coal sufficient to satisfy SPS's Annual Quantity requirements and such additional coal as may be necessary to provide a continuous supply of coal to meet Tolk's annual burn and inventory requirements.

**Economic Out Provision:** None.

**Delivery Point(s):** Coalbunkers at Tolk Station.

**Transportation Provision:** Fuel is purchased F.O.B. at the Point(s) of Delivery (Tolk bunkers) at price expressed in dollars MMBtu and includes all transportation fees to the Point(s) of Delivery. TUCO has entered into a transportation agreement with the BNSF

for transportation of coal supplies delivered under this Agreement. In addition, TUCO has entered into a contract with Savage Tolk Corporation to provide coal-handling services.

**Quality or Measurement:**

Coal to be within specified ranges for typical coal set forth in Exhibit B to the contract, including ranges for Btu/lb., Moisture, Ash, Sulfur, and Lbs. of SO<sub>2</sub>.

- Samples taken by TUCO per ASTM standards; results reported in a monthly analysis prepared by SPS.
- Either party may question correctness of original analysis; commercial testing laboratory then used to do an independent analysis.
- SPS has right to have representative present to observe sampling.

**Accounting Procedure and Billing:**

- Seller shall use generally accepted accounting principles and per ton weight averaging determined at the close of each calendar month.
- Seller is to invoice on or before 8<sup>th</sup> day of each month.
- Invoices are due and payable on or before 1<sup>st</sup> working day after 15<sup>th</sup> day of month.
- All statements, billings, and payments shall be subject to correction within 2 years of the date of the invoice.
- Past due interest charges are assessed at 1% over prime.

**Force Majeure:** Force majeure clause is plant specific. May claim partial force majeure. Complete shutdown is not required.

**Southwestern Public Service Company**

**Combustion Residual Production**

Line No.	Plant	Month	Fly Ash (Tons)	Bottom Ash (Tons)	Scrubber Sludge (Tons)
1	Harrington	October 2019	6,184	446	-
2		November 2019	6,453	395	-
3		December 2019	8,403	926	-
4		January 2020	6,453	1,503	-
5		February 2020	4,381	1,014	-
6		March 2020	4,061	1,988	-
7		April 2020	2,583	2,087	-
8		May 2020	2,877	1,560	-
9		June 2020	3,725	1,860	-
10		July 2020	2,202	1,759	-
11		August 2020	2,401	1,156	-
12		September 2020	2,410	2,076	-
13	Subtotal		52,132	16,770	-
			Fly Ash (Tons)	Bottom Ash (Tons)	Scrubber Sludge (Tons)
14	Tolk	October 2019	3,402	840	-
15		November 2019	5,951	312	-
16		December 2019	5,189	196	-
17		January 2020	3,713	2,499	-
18		February 2020	2,985	1,490	-
19		March 2020	2,154	663	-
20		April 2020	1,298	607	-
21		May 2020	2,349	291	-
22		June 2020	5,484	444	-
23		July 2020	3,628	301	-
24		August 2020	2,070	292	-
25		September 2020	2,263	331	-
26	Subtotal		40,484	8,265	-
27	Total Test Year		92,616	25,036	-

## **Southwestern Public Service Company**

### **Coal Combustion Residual Disposal**

The disposal method for the combustion residual that is produced at the Tolk Station and Harrington Station Units is as follows:

The fly ash is collected by either electrostatic precipitator (Harrington Station Unit 1) or bag house (Harrington Station Units 2 and 3 and Tolk Station Units 1 and 2). The ash is dry conveyed to storage silos for ultimate sale into markets including cement replacement markets. Alternatively, it can be conditioned with water and deposited into storage pits for future sale into markets such as road or parking lot base. None of the Units utilize sorbents for sulfur oxide nor do any of the Units utilize flue gas conditioning agents for nitrous oxide control. Thus, no combustion residuals related to these flue gas emissions control technologies are produced. Through extensive testing, mercury sorbents were found that do not adversely affect the marketability of the fly ash. Additionally, when needed there is a product that is injected into the flue gas prior to the electrostatic precipitator to enhance its performance. This product also does not deter the marketability of the fly ash.

The bottom ash falls to the bottom of the furnace, is cooled by water and is removed by a drag chain to a point outside of the boiler building. It is then allowed to dewater and it is picked up by a front-end loader and loaded into dump trucks by the current Southwestern Public Service Company (“SPS”) contractor, Lafarge, who manages and processes all ash processed by SPS for beneficial use and resale. It is then moved to a storage area and sold as is or crushed and screened into different sizes and then resold for use as fill material for pipelines, road base, ice skid control and topping rock for asphalt paving sealing. All costs associated with the handling, processing storage, and sale of the ash are paid by Lafarge. SPS then receives a percentage of the overall sales of the ash to beneficial use markets.

**Southwestern Public Service Company**

**Combustion Residual Disposal Costs**

<b>Line No.</b>	<b>Plant</b>	<b>Month</b>	<b>Tons Sold</b>	<b>Revenue</b>	<b>Costs</b>
1	Harrington	October 2019	6,629.87	\$89,378.82	\$ -
2		November 2019	6,834.32	\$96,245.61	-
3		December 2019	9,275.38	\$122,229.21	-
4		January 2020	7,166.80	\$80,989.71	-
5		February 2020	5,394.17	\$59,532.69	-
6		March 2020	6,049.15	\$59,459.27	-
7		April 2020	4,669.34	\$41,360.54	-
8		May 2020	4,437.20	\$47,708.27	-
9		June 2020	5,584.92	\$56,330.47	-
10		July 2020	3,950.33	\$40,714.90	-
11		August 2020	3,556.35	\$41,699.55	-
12		September 2020	4,485.82	\$37,871.58	-
13	<b>Subtotal</b>		<b>68,034</b>	<b>773,521</b>	<b>\$ -</b>
	<b>Plant</b>	<b>Month</b>	<b>Tons Sold</b>	<b>Revenue</b>	<b>Costs</b>
14	Tolk	October 2019	4,241.38	\$27,962.09	\$ -
15		November 2019	6,262.72	\$95,612.07	-
16		December 2019	5,385.08	\$80,856.25	-
17		January 2020	5,260.37	\$53,573.66	-
18		February 2020	4,474.47	\$50,018.55	-
19		March 2020	2,816.90	\$36,263.67	-
20		April 2020	1,904.90	\$23,183.93	-
21		May 2020	2,689.74	\$42,206.43	-
22		June 2020	5,927.66	\$47,278.50	-
23		July 2020	3,946.43	\$39,445.68	-
24		August 2020	2,336.37	\$34,389.96	-
25		September 2020	2,593.75	\$35,585.98	-
26	<b>Subtotal</b>		<b>47,840</b>	<b>566,377</b>	<b>-</b>
27	<b>Total Test Year</b>		<b>115,873</b>	<b>1,339,897</b>	<b>-</b>

**Notes:** Revenues derived from sale of ash products and expenses related to ash handling are accounted for using separate Object Accounts according to Generally Accepted Accounting Principles. The two Object Accounts will net together for Federal Energy Regulatory Commission purposes.

All costs associated with the handling, processing, storage and sale of the ash are paid by an outside contractor.

## Southwestern Public Service Company

### Natural Gas Delivery System

As discussed in the testimony of Southwestern Public Service Company (“SPS”) witness William A. Grant, SPS has not filed a fuel reconciliation with its current base rate case in accordance with the Order in Project No. 41905 and 16 Tex. Admin. Code § 25.236 as revised in that project. However, SPS has included this schedule in the filing package because it remains applicable to information presented in SPS’s base rate case.

Line No.	Plant Name <sup>1</sup>	Maximum Plant Capacity MMBtu/day <sup>2</sup>	Pipeline Operator	Pipelines Feasibly Connected	Pipelines Currently Connected	Maximum Operating Capacity MMBtu/day <sup>3</sup>	Pipeline Capacity % Maximum Plant Capacity
1	Jones	202,776	Oneok Westex Transmission, L.P.		X	60,000	29
2			Markwest Power-Tex L.P.		X	60,000	29
3			Red River Pipeline		X	120,000	59
4			Northern Natural Gas Company	X			
5	Nichols	109,910	Oneok Westex Transmission, L.P.		X	90,000	82
6			Colorado Interstate Gas Company		X	187,000	170
7			El Paso Natural Gas Company	X			
8			Natural Gas Pipeline of America	X			
9			Transwestern Pipeline Company	X			
10	Cunningham	124,000	El Paso Natural Gas Company		X	46,000	37
11			Markwest Pinnacle L.P.		X	15,000	12
12			Northern Natural Gas Company		X	118,000	95
13			Transwestern Pipeline Company	X			
14	Maddox	50,000	Raptor		X	10,000	20
15			Markwest Pinnacle L.P.		X	48,000	96
16			Northern Natural Gas Company	X			
17			Transwestern Pipeline Company	X			
18			El Paso Natural Gas Company	X			
19	Hobbs	100,000	El Paso Natural Gas Company		X	150,000	150
20			Northern Natural Gas Company		X	100,000	100
21			Markwest Pinnacle L.P.		X	110,000	110
22	Plant X	113,140	Oneok Westex Transmission, L.P.		X	60,000	53
23			El Paso Natural Gas Company		X	60,000	53

<sup>1</sup> Harrington and Tolk coal plants are not listed as they only use gas for startup.

<sup>2</sup> Maximum Plant Capacity is based on the maximum generating capacity of each unit.

<sup>3</sup> Operating Capacity is defined as the average normal operating capacity through the interconnecting meter.

Southwestern Public Service Company

### **Natural Gas Storage Description**

As discussed in the testimony of William A. Grant, Southwestern Public Service Company (“SPS”) has not filed a fuel reconciliation with its current base rate case in accordance with the Order in Project No. 41905 and 16 Tex. Admin. Code (“TAC”) § 25.236 as revised in that project. Additionally, SPS is not proposing a new fuel factor under 16 TAC § 25.237. Therefore, rate year data is not applicable.

### **Contracts and Facilities**

#### **Oneok Texas Gas Storage**

SPS continues to contract with Oneok Texas Gas Storage for a storage service with a term of September 1, 2017 through August 31, 2022.

Since SPS does not own and/or operate this facility, a description of the facility or a schematic illustrating the physical layout and operation of the facility is unavailable.

Contract terms require SPS to pay a monthly capacity charge.

A copy of the natural gas storage agreement is included in the workpapers to Schedule I-7.

#### **Northern Natural Gas Company Storage Contract**

SPS continues to contract with Northern Natural Gas Company for a storage service with a term of June 1, 2008 through March 31, 2028.

Since SPS does not own and/or operate this facility, a description of the facility or a schematic illustrating the physical layout and operation of the facility is unavailable.

A copy of the natural gas storage agreement is included in the workpapers to Schedule I-7.

Contract terms require SPS to pay an annual reservation charge.

### **Injections, Withdrawals and Inventory**

Following are the monthly injections, withdrawals and month end inventory balances for the Test Year (October 1, 2019 through September 30, 2020) (“Test Year”). (All amounts represent actual activity, there are no estimated values.)

<b>Month</b>	<b>Injections</b>	<b>Withdrawals</b>	<b>Ending Balance</b>	<b>Ending Balance</b>
	<b>MMBtu</b>	<b>MMBtu</b>	<b>MMBtu</b>	<b>Dollars</b>
Beginning Balance			2,836,543	2,595,103
October 2019	597,453	(979,235)	2,454,761	2,292,947
November 2019	581,046	(774,080)	2,261,727	2,187,056
December 2019	857,199	(705,758)	2,413,168	2,475,134
January 2020	798,630	(899,634)	2,312,164	2,256,295
February 2020	681,950	(1,027,578)	1,966,536	1,732,919
March 2020	1,555,361	(696,322)	2,825,575	1,561,424
April 2020	817,587	(698,722)	2,944,440	1,490,217
May 2020	1,076,998	(276,208)	3,745,230	2,742,315
June 2020	457,726	(930,103)	3,272,853	2,598,563
July 2020	547,915	(1,270,807)	2,549,961	2,172,438
August 2020	908,458	(1,047,578)	2,410,841	2,341,174
September 2020	713,784	(651,173)	2,473,452	2,648,422

### **Monthly Costs**

Following are the monthly costs for gas storage for the Test Year.

<b>Month</b>	<b>Oneok Gas Storage Demand</b>	<b>Northern Natural Demand</b>	<b>Northern Natural Injection / Withdrawal Charge</b>	<b>Total</b>
October 2019	107,400	719,780	16,520	843,700
November 2019	107,400	211,700	11,855	330,955
December 2019	107,400	211,700	17,569	336,669
January 2020	107,400	210,097	22,500	339,997
February 2020	107,400	210,097	17,611	335,108
March 2020	107,400	210,097	24,859	342,356
April 2020	107,400	210,097	16,920	334,417
May 2020	107,400	210,097	18,090	335,587
June 2020	107,400	714,337	20,424	842,161
July 2020	107,400	714,337	23,216	844,953
August 2020	107,400	714,337	28,525	850,262
September 2020	107,400	714,337	19,509	841,246
<b>Total</b>	<b>1,288,800</b>	<b>5,051,013</b>	<b>237,598</b>	<b>6,577,412</b>

## **Southwestern Public Service Company**

### **Fuel Properties**

Southwestern Public Service Company (“SPS”) does not own, partly or wholly, any fuel-related properties.<sup>1</sup>

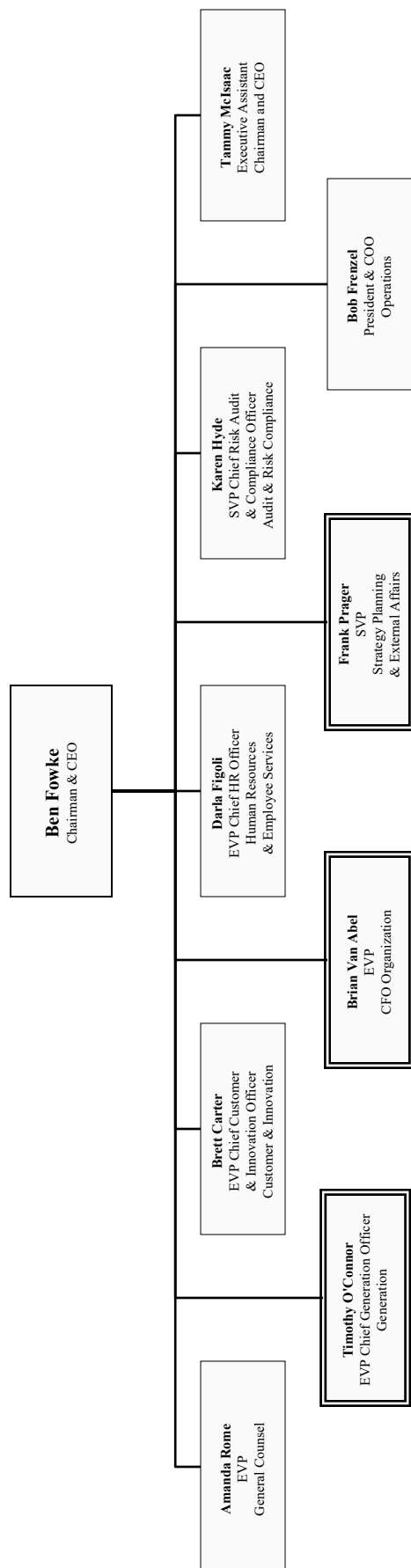
SPS receives royalty income from production from oil and gas leases on company owned property in the following counties:

- Texas – Hockley and Moore Counties;
- Oklahoma – Beaver and Texas Counties; and
- New Mexico – Eddy County.

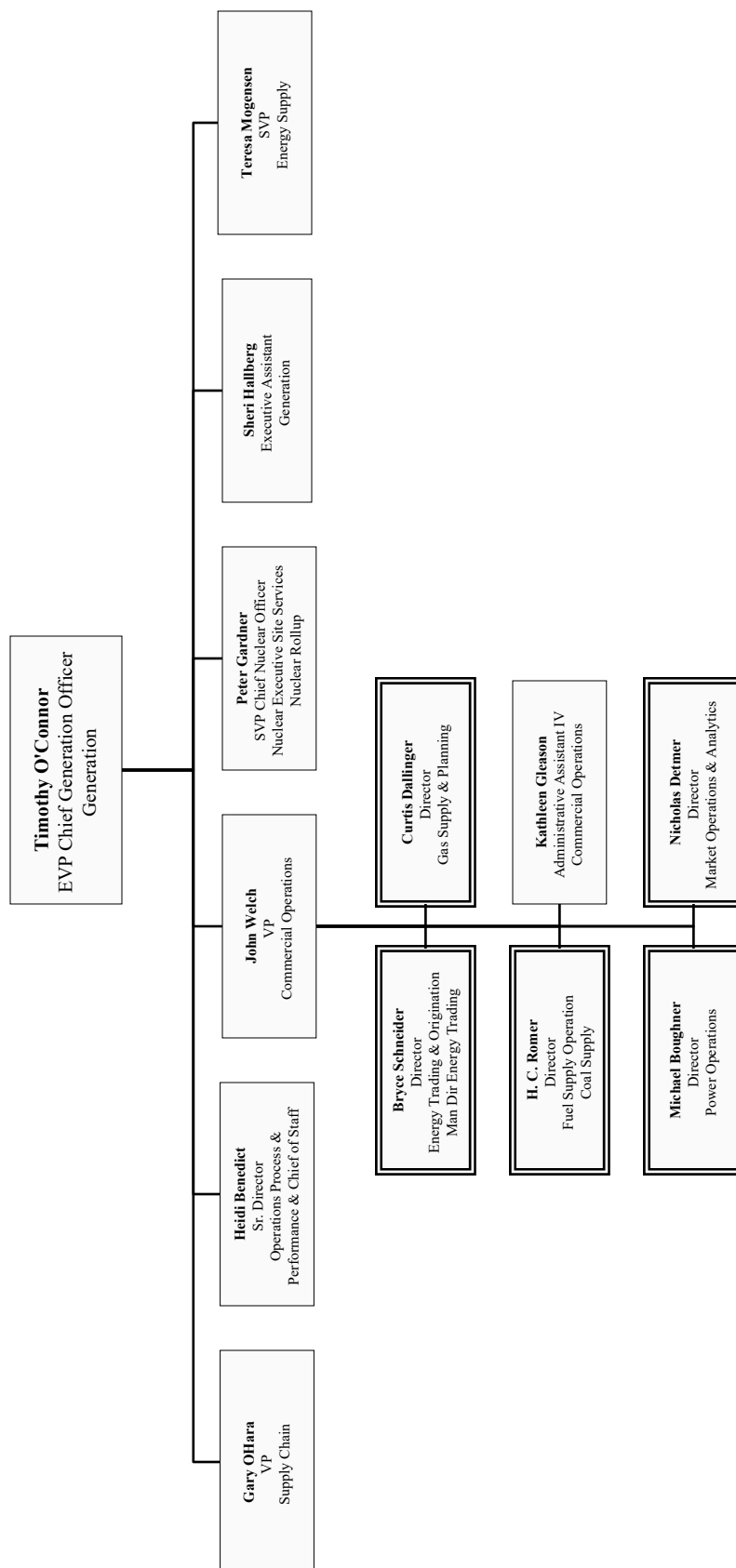
---

<sup>1</sup> SPS defines fuel-related property as a property for which the primary use is fuel production.

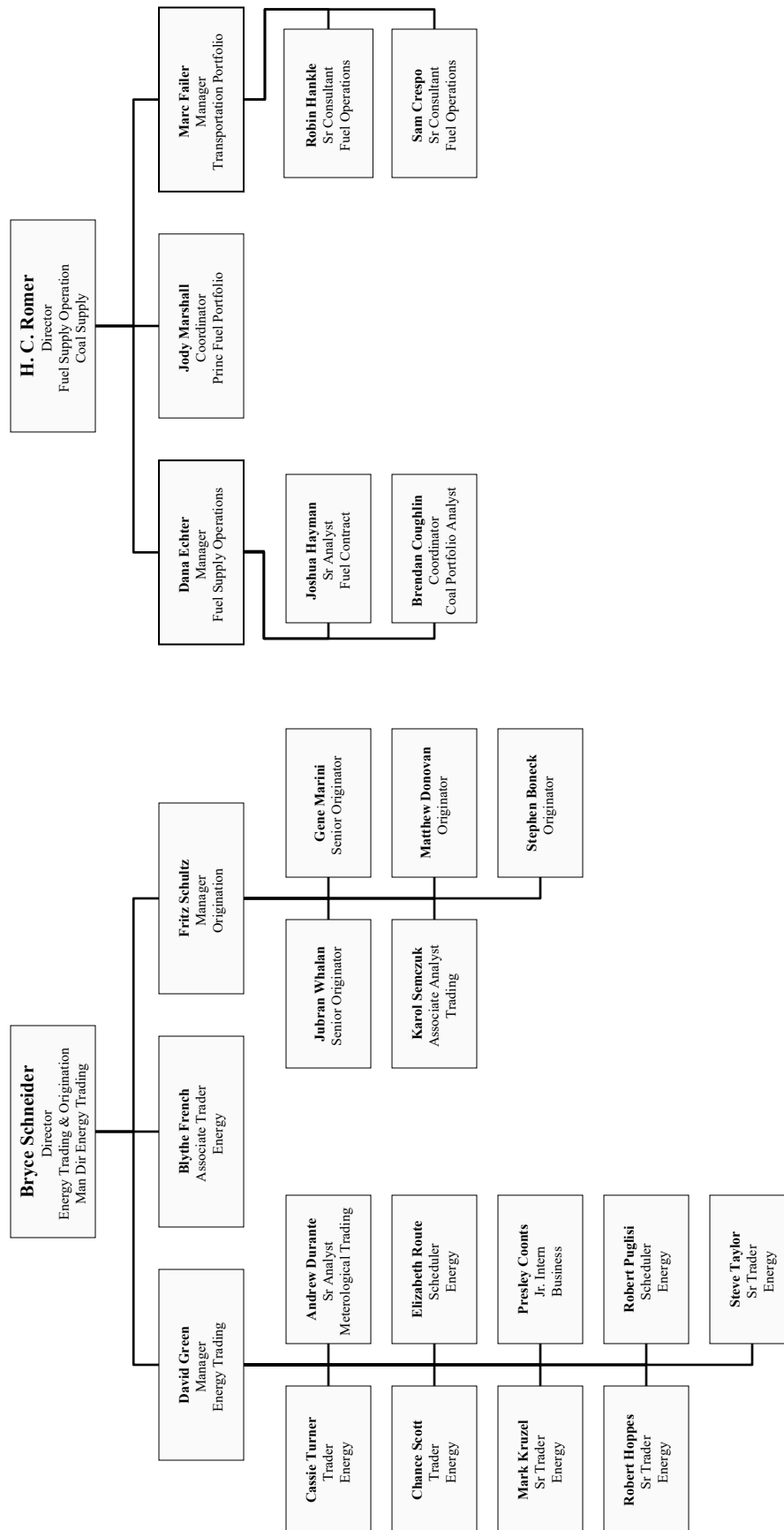
# Southwestern Public Service Company Employee Organizational Charts



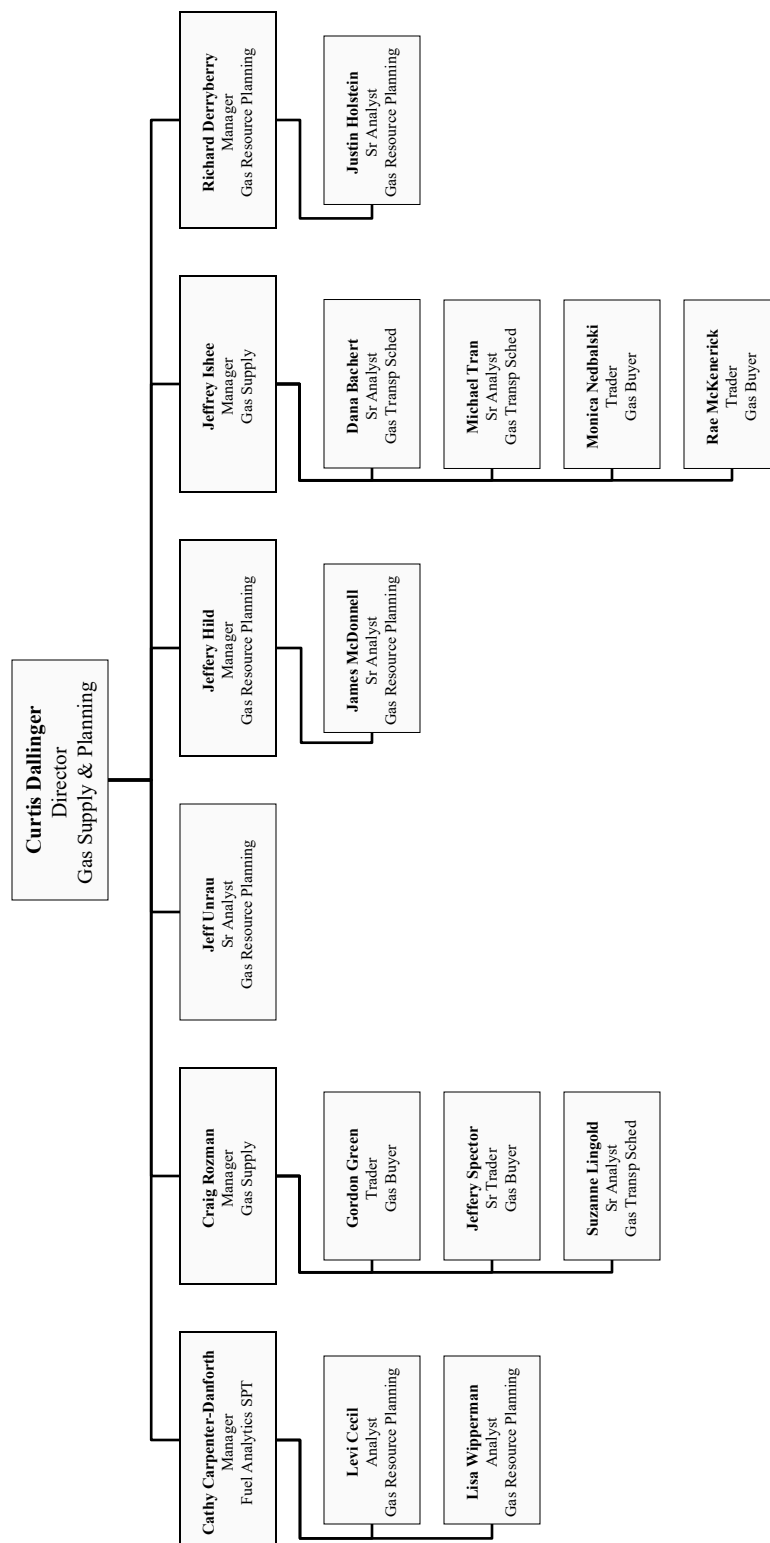
# Southwestern Public Service Company Employee Organizational Charts



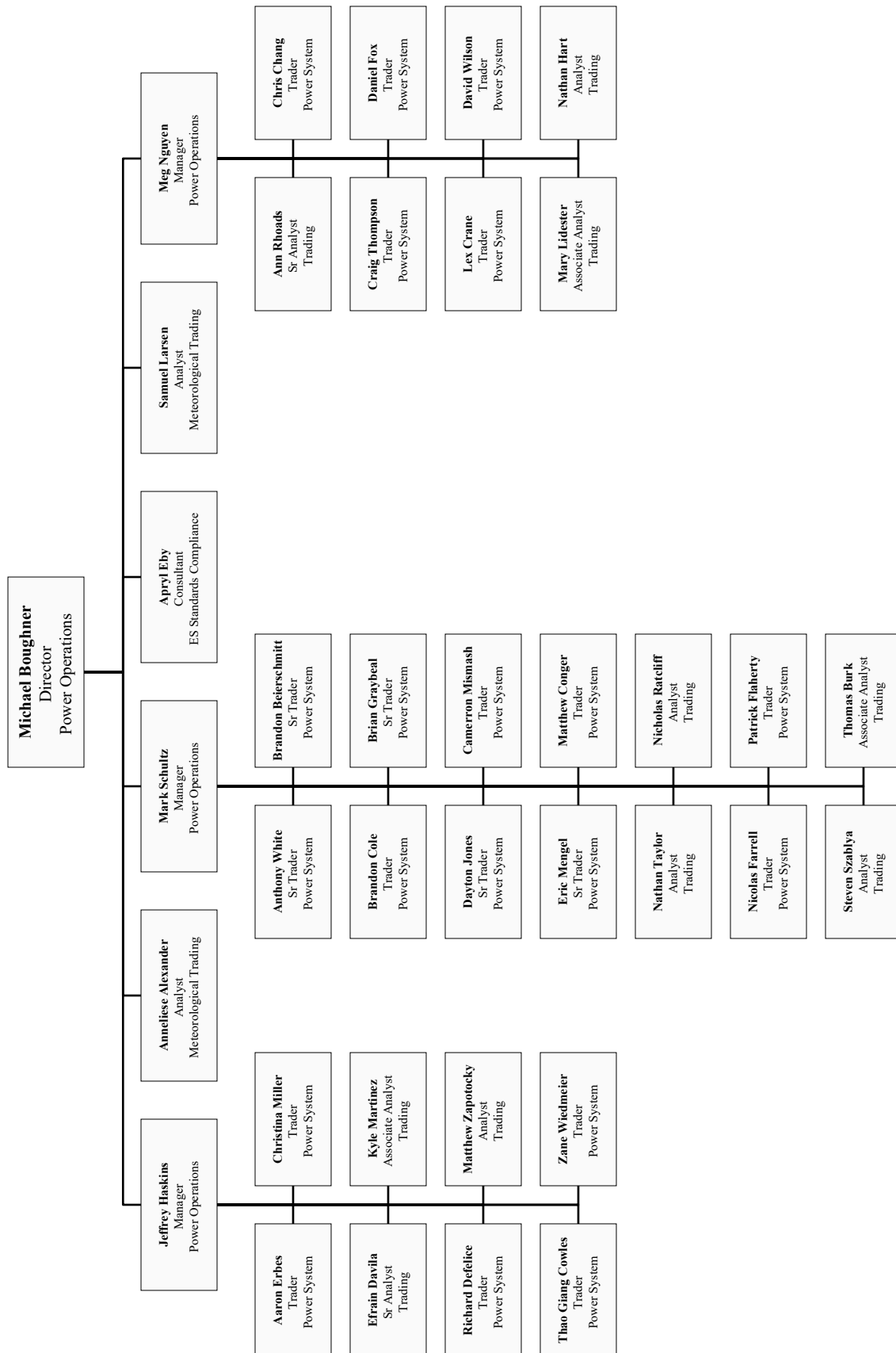
# Southwestern Public Service Company Employee Organizational Charts



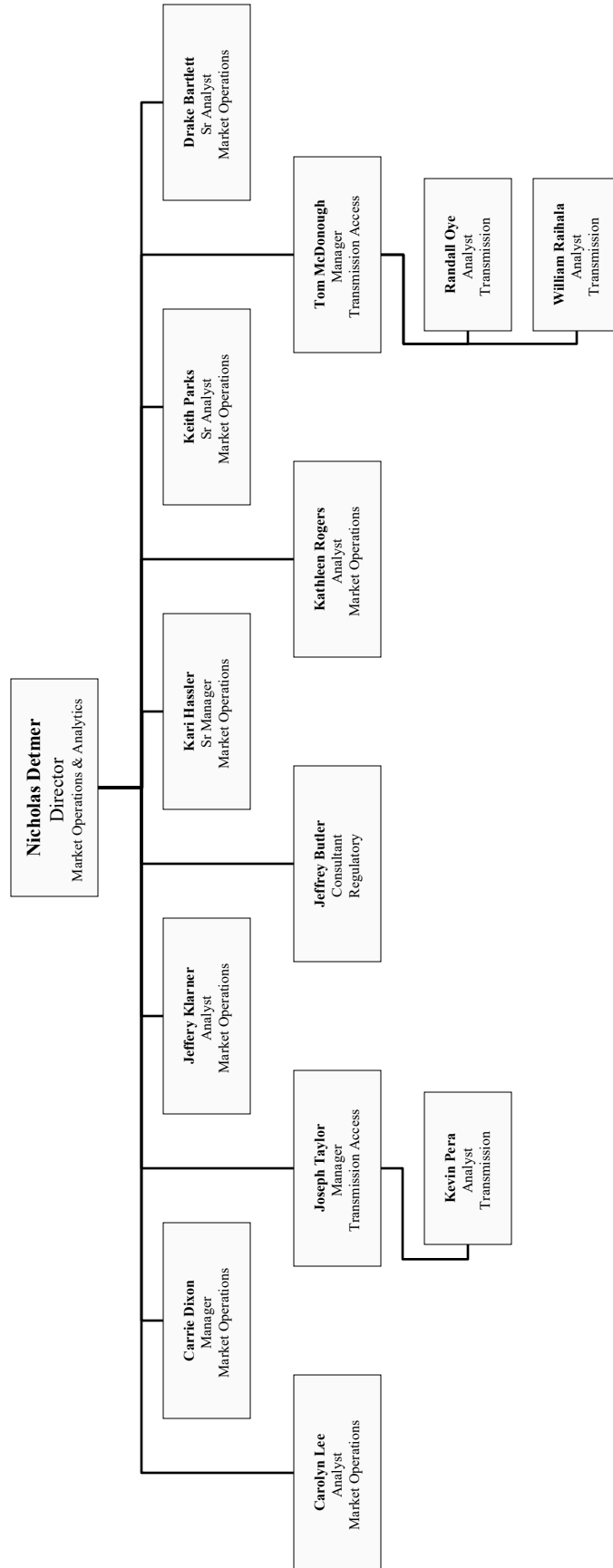
# Southwestern Public Service Company Employee Organizational Charts



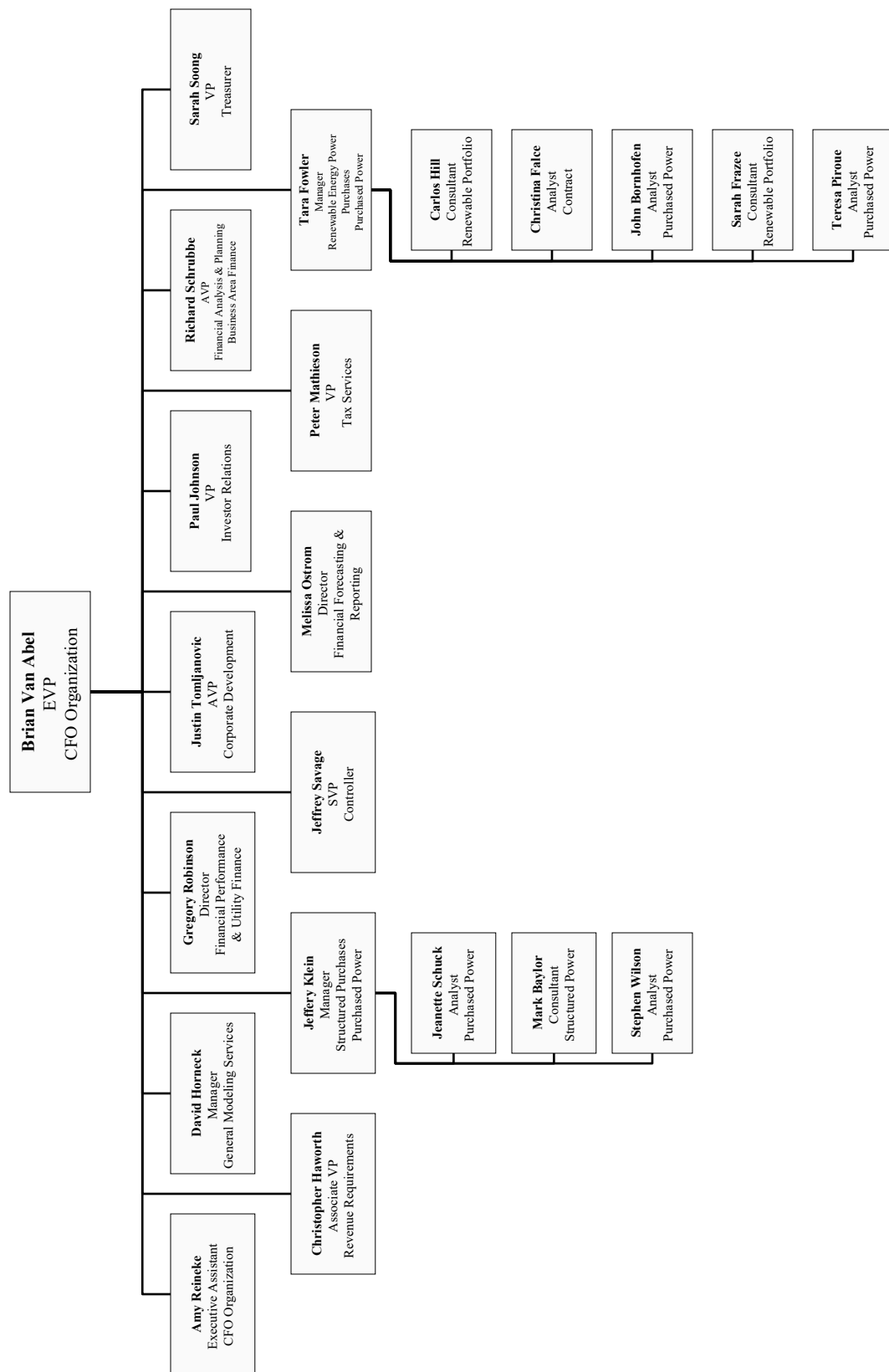
# Southwestern Public Service Company Employee Organizational Charts



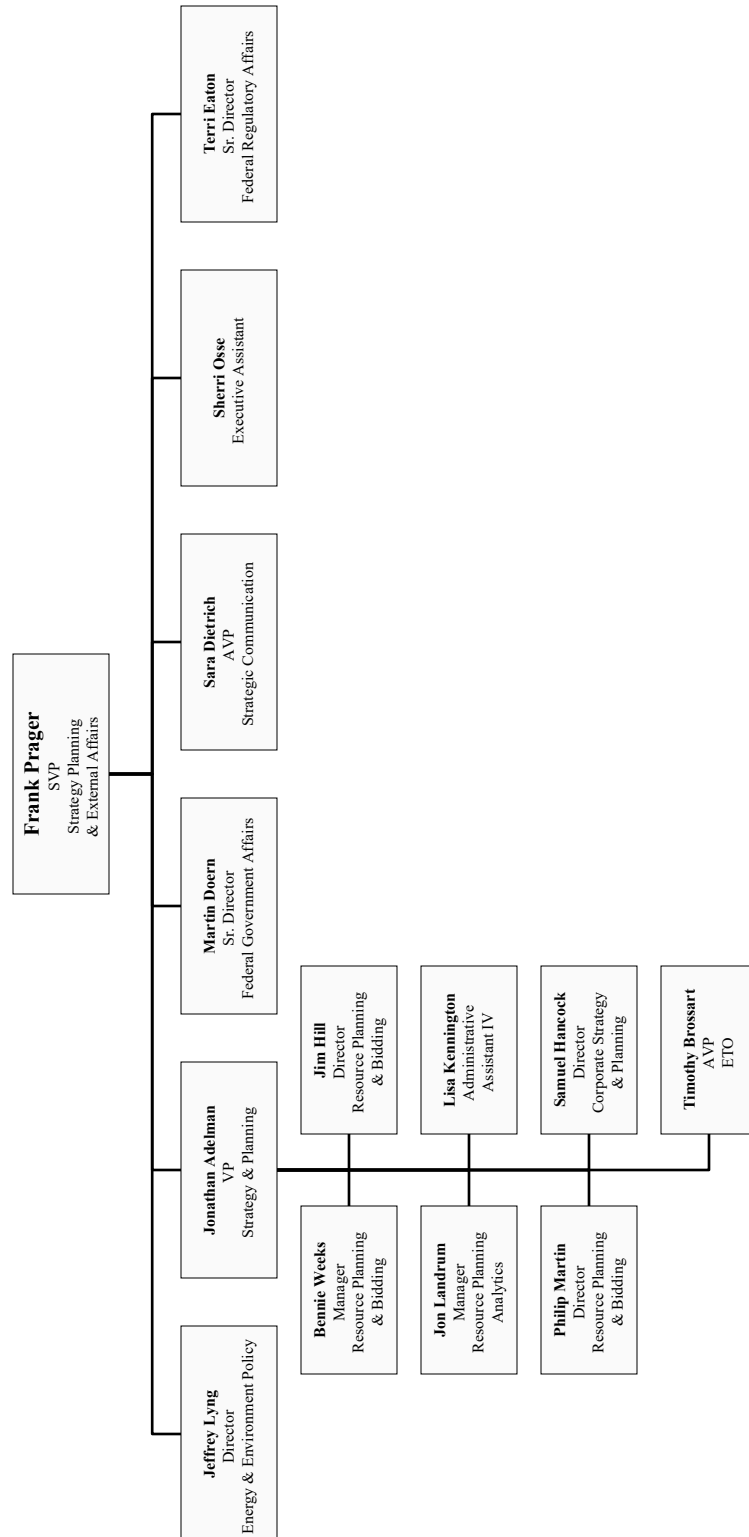
# Southwestern Public Service Company Employee Organizational Charts



# Southwestern Public Service Company Employee Organizational Charts



# Southwestern Public Service Company Employee Organizational Charts



**Southwestern Public Service Company**

**Employee Ethics**

**2021 TX Rate Case**

**APPLICATION OF  
SOUTHWESTERN PUBLIC SERVICE COMPANY  
FOR AUTHORITY TO CHANGE RATES**

---

**I-10(V)**

## **Southwestern Public Service Company**

### **Fuel and Purchased Power Assumptions Narrative**

This schedule is not applicable. As discussed in the direct testimony of William A. Grant, Southwestern Public Service Company (“SPS”) has not filed a fuel reconciliation with its current base rate case in accordance with the Order in Project No. 41905 and 16 Tex. Admin. Code § 25.236 (“TAC”) as revised in that project. Additionally, SPS is not proposing a new fuel factor under 16 TAC § 25.237. Therefore, rate year data is not applicable. Please refer to the direct testimony of Jeffrey C. Klein for information on long-term Purchased Power Agreement capacity and non-fuel costs recovered in base rates.

## **Southwestern Public Service Company**

### **Fossil Fuel Mix**

As discussed in the direct testimony of William A. Grant, Southwestern Public Service Company (“SPS”) has not filed a fuel reconciliation with its current base rate case in accordance with the Order in Project No. 41905 and 16 Tex. Admin. Code § 25.236 (“TAC”) as revised in that project. Additionally, SPS is not proposing a new fuel factor under 16 TAC § 25.237 and therefore, rate year data is not applicable.

## **Southwestern Public Service Company**

### **Ethics – Relationships with Fuel Supplier**

Since the end of Southwestern Public Service Company's ("SPS") last fuel reconciliation period (January 1, 2016 through June 30, 2018), no current or former managers, executives, or directors of SPS or any of its affiliates have been involved in any capacity with the management of any provider of fuel or fuel supply service to SPS.

## **Southwestern Public Service Company**

### **Fuel Audits**

As discussed in the testimony of Southwestern Public Service Company (“SPS”) witness William A. Grant, SPS has not filed a fuel reconciliation with its current base rate case in accordance with the Order in Project No. 41905 and 16 Tex. Admin. Code § 25.236 as revised in that project. However, SPS has included this schedule in the filing package because it remains applicable to information presented in SPS’s base rate case.

### **Coal**

1. Company Audited: TUCO, Inc.
2. Service Provided: Coal Supplier
3. Period Audit Covered: October 1, 2018 – December 31, 2019
4. Date Audit Completed: July 13, 2020

Please refer to Attachment HCR-RR-1(CONF) to the direct testimony of H. Craig Romer for a copy of the audit report.

### **Natural Gas and Fuel Oil**

There were no audits performed for natural gas or fuel oil since the end of SPS’s last fuel reconciliation period (January 1, 2016 through June 30, 2018).

**Southwestern Public Service Company**

**Fuel Contract Analyses**

**October 1, 2019 through September 30, 2020 (Test Year) and October 1, 2020 through December 31, 2020 (Update Period)**

As discussed in the Direct Testimony of William A. Grant, Southwestern Public Service Company (“SPS”) has not filed a fuel reconciliation with its current base rate case in accordance with the Order in Project No. 41905 and 16 Tex. Admin. Code § 25.236 as revised in that project. SPS has included this schedule in the rate filing package with only the information that remains applicable to information presented in SPS’s base rate case.

**Purchased Power Agreements:**

<b>Purchased Power Agreements</b>	<b>Effective Date(s)</b>
Borger Energy Associates, L.P.	6/12/99 through 6/11/24, SPS has option to extend for 10 years.
Lea Power Partners, LLC	9/16/08 through 9/15/33
Tokai Carbon CB Ltd. (previously known as Sid Richardson Carbon, Ltd.)	8/1/01 through 7/31/21

**Coal Supply Agreements:**

<b>Coal Supply Agreements</b>	<b>Effective Dates(s)</b>
TUCO Inc. (Harrington Station)	1/1/2018 through 12/31/2022
TUCO Inc. (Tolk Station)	1/1/2018 through 12/31/2022

## **Southwestern Public Service Company**

### **Reconcilable Fuel Costs**

#### Schedules:

- I-16.1 Fossil Fuel Mix (Burned)
- I-16.2 Fossil Fuel Mix (Purchased)
- I-16.3 Competitive Spot Fossil Fuel Purchases
- I-16.4 Other Spot Fossil Fuel Purchases

The I-16 schedules are not applicable. As discussed in the Direct Testimony of William A. Grant, Southwestern Public Service Company (“SPS”), has not filed a fuel reconciliation with its current base rate case in accordance with the Order in Project No. 41905 and 16 Tex. Admin. Code § 25.236 as revised in that project.

**Schedule I-17.1(CONF)**  
**Pages 1 through 3**

**Are**  
**Confidential Protected Information**

**CONFIDENTIAL PROTECTED MATERIALS**  
**PROVIDED PURSUANT TO PROTECTIVE ORDER**

## **Southwestern Public Service Company**

### **Lignite Cost Breakdown**

Southwestern Public Service Company (“SPS”) did not purchase or burn any lignite during the Test Year (October 1, 2019 through September 30, 2020).

## **Southwestern Public Service Company**

### **Coal Cost Description**

Southwestern Public Service Company (“SPS”) purchases a delivered coal supply at the generating plant bunkers from a single coal supplier, TUCO Inc. (“TUCO”). Therefore, the cost shown on the monthly confidential Fuel Purchase Report is a total cost incurred by TUCO prior to delivery to the bunkers plus a supplier margin. TUCO’s costs for fuel, transportation, handling and other are included in this total cost invoiced to SPS.

## Southwestern Public Service Company

### Coal and Lignite Supplier Locations

As discussed in the testimony of Southwestern Public Service Company (“SPS”) witness William A. Grant, SPS has not filed a fuel reconciliation with its current base rate case in accordance with Project No. 41905 and 16 Tex. Admin. Code § 25.236 as revised in that project. However, SPS has included this schedule in the filing package because it remains applicable to information presented in SPS’s base rate case.

#### Harrington Station

	<b>Company</b>	<b>Mine</b>	<b>County</b>	<b>State</b>
<b>2019</b>	Arch Coal Sales	Thunder Complex	Campbell	Wyoming
	Peabody Coal Sales	North Antelope	Campbell/Converse	Wyoming
	Cloud Peak Energy Resources	Antelope	Campbell/Converse	Wyoming
<b>2020</b>	Arch Coal Sales	Thunder Complex	Campbell	Wyoming
	Peabody Coal Sales	North Antelope	Campbell/Converse	Wyoming

#### Tolk Station

	<b>Company</b>	<b>Mine</b>	<b>County</b>	<b>State</b>
<b>2019</b>	Arch Coal Sales	Thunder Complex	Campbell	Wyoming
	Peabody Coal Sales	North Antelope	Campbell/Converse	Wyoming
	Cloud Peak Energy Resources	Antelope	Campbell/Converse	Wyoming
<b>2020</b>	Arch Coal Sales	Thunder Complex	Campbell	Wyoming
	Peabody Coal Sales	North Antelope	Campbell/Converse	Wyoming

SPS purchases all of its coal supply needs delivered to the generating plant coal bunkers from a single supplier, TUCO Inc. (“TUCO”). SPS purchases coal from TUCO in Potter County and Lamb County, Texas.

## **Southwestern Public Service Company**

### **Rail Haul Distance**

As discussed in the testimony of Southwestern Public Service Company (“SPS”) witness William A. Grant, SPS has not filed a fuel reconciliation with its current base rate case in accordance with the Order in Project No. 41905 and 16 Tex. Admin. Code § 25.236 as revised in that project. However, SPS has included this schedule in the rate filing package because it remains applicable to information presented in SPS’s base rate case.

SPS purchases all of its coal supply needs delivered to the generating plant coal bunkers from a single supplier, TUCO Inc. SPS does not have any coal transportation contracts and therefore does not have any resulting rail haul distances to report.

## **Southwestern Public Service Company**

### **Unit Trains**

As discussed in the testimony of Southwestern Public Service Company (“SPS”) witness William A. Grant, SPS has not filed a fuel reconciliation with its current base rate case in accordance with the Order in Project No. 41905 and 16 Tex. Admin. Code § 25.236 as revised in that project. However, SPS has included this schedule in the rate filing package because it remains applicable to information presented in SPS’s base rate case.

SPS purchases all of its coal supply needs delivered to the generating plant coal bunkers from a single supplier, TUCO Inc. SPS does not have any unit trains.

## **Southwestern Public Service Company**

### **Cycle Time**

As discussed in the testimony of Southwestern Public Service Company (“SPS”) witness William A. Grant, SPS has not filed a fuel reconciliation with its current base rate case in accordance with the Order in Project No. 41905 and 16 Tex. Admin. Code § 25.236 as revised in that project. However, SPS has included this schedule in the rate filing package because it remains applicable to information presented in SPS’s base rate case.

SPS purchases all of its coal supply needs delivered to the generating plant coal bunkers from a single supplier, TUCO Inc. SPS does not have any unit trains, coal transportation contracts, or resulting cycle times.

## **Southwestern Public Service Company**

### **Rail Cars**

As discussed in the testimony of Southwestern Public Service Company (“SPS”) witness William A. Grant, SPS has not filed a fuel reconciliation with its current base rate case in accordance with the Order in Project No. 41905 and 16 Tex. Admin. Code § 25.236 as revised in that project. However, SPS has included this schedule in the rate filing package because it remains applicable to information presented in SPS’s base rate case.

SPS purchases all of its coal supply needs delivered to the generating plant coal bunkers from a single supplier, TUCO Inc. SPS does not operate, lease, or own any rail cars; therefore, SPS has no rail car data.

## **Southwestern Public Service Company**

### **Rail Car Leases**

As discussed in the testimony of Southwestern Public Service Company (“SPS”) witness William A. Grant, SPS has not filed a fuel reconciliation with its current base rate case in accordance with the Order in Project No. 41905 and 16 Tex. Admin. Code § 25.236 as revised in that project. However, SPS has included this schedule in the rate filing package because it remains applicable to information presented in SPS’s base rate case.

SPS purchases all of its coal supply needs delivered to the generating plant coal bunkers from a single supplier, TUCO Inc. SPS does not, lease, or own any rail cars; therefore, SPS has no rail car leases.

## **Southwestern Public Service Company**

### **Rail Car Maintenance**

As discussed in the testimony of Southwestern Public Service Company (“SPS”) witness William A. Grant, SPS has not filed a fuel reconciliation with its current base rate case in accordance with the Order in Project No. 41905 and 16 Tex. Admin. Code § 25.236 as revised in that project. However, SPS has included this schedule in the rate filing package because it remains applicable to information presented in SPS’s base rate case.

SPS purchases all of its coal supply needs delivered to the generating plant coal bunkers from a single supplier, TUCO Inc. SPS does not operate, lease, or own any rail cars; therefore, SPS has no maintenance program for cars used to transport coal to the utility’s generating stations.

## **Southwestern Public Service Company**

### **Rail Car Repairs**

As discussed in the testimony of Southwestern Public Service Company (“SPS”) witness William A. Grant, SPS has not filed a fuel reconciliation with its current base rate case in accordance with the Order in Project No. 41905 and 16 Tex. Admin. Code § 25.236 as revised in that project. However, SPS has included this schedule in the rate filing package because it remains applicable to information presented in SPS’s base rate case.

SPS purchases all of its coal supply needs delivered to the generating plant coal bunkers from a single supplier, TUCO Inc. SPS does not operate, lease, or own any rail cars; therefore, SPS had no “Bad Order” rail car repairs.

## Southwestern Public Service Company

## Fuel Management Travel

## FERC Account 501.8

Line No.		SPS	PSCo	NSP-M	NSP-W	Total/XES
1	October-2019	\$ 1,022	\$ 370	\$ 235	\$ -	\$ 1,627
2	November-2019	369	486	1,458	-	2,312
3	December-2019	1,673	1,340	1,251	-	4,264
4	January-2020	-	89	-	-	89
5	February-2020	706	1,044	1,165	-	2,915
6	March-2020	1,407	1,502	1,289	-	4,199
7	April-2020	452	490	490	-	1,432
8	May-2020	-	-	-	-	-
9	June-2020	-	-	87	-	87
10	July-2020	-	-	-	-	-
11	August-2020	5	5	5	-	14
12	September-2020	-	-	-	-	-
13	Total*	\$ 5,633	\$ 5,326	\$ 5,980	\$ -	\$ 16,939

**Note:** \*As discussed by William A. Grant, Southwestern Public Service Company ("SPS") has not filed a fuel reconciliation with its current base rate case in accordance with the Order in Project No. 41905 and 16 Tex. Admin. Code § 25.236 as revised in that project. However, SPS has included this schedule in the filing package because it remains applicable to information presented in SPS's base rate case.

## **Southwestern Public Service Company**

### **Fuel Management**

As discussed in the testimony of Southwestern Public Service Company (“SPS”) witness William A. Grant, SPS has not filed a fuel reconciliation with its current base rate case in accordance with the Order in Project No. 41905 and 16 Tex. Admin. Code § 25.236 as revised in that project. However, SPS has included this schedule in the rate filing package because it remains applicable to information presented in SPS’s base rate case.

### **Power Purchase Agreements**

- SPS’s ongoing practice regarding long-term purchased power agreements is to purchase capacity and energy under long-term agreements and to administer those agreements which result in costs incurred that are reasonable, necessary, and prudent.

### **Coal**

- SPS performed an annual audit of its coal supply agreements during the Test Year.
- Agreements utilizing multiple suppliers were executed. This provides the benefits of supply diversity and reduced risk associated with a single source supplier.
- SPS worked with TUCO Inc. to authorize several projects at the Tolk and Harrington Stations’ coal handling facilities to improve safety and efficiency. Please refer to the Direct Testimony of H. Craig Romer for additional information regarding the projects.

### **SPP Integrated Marketplace and Short-Term Energy Markets**

SPS also actively participates in short-term energy markets, primarily the Southwest Power Pool’s Integrated Marketplace. SPS buys short-term energy when such purchases are expected to reduce system-wide fuel costs and sells short-term energy when it expects to profit from such sales.

### **Natural Gas and Oil**

- SPS has actively worked since the previous test year to manage increasing demand costs caused by increased pipeline demand. As a result of the increased natural gas production in the Permian Basin, pipelines delivering out of the basin, including the ONEOK WesTex Gas Transmission (“OWT”) system, have become heavily utilized and have experienced an increase in market demand over the past several years. When SPS’s firm gas transportation agreement with OWT was up for renewal in April 2017, rather than fully renewing the agreement under OWT’s increased demand rates, SPS renewed only a portion of its firm capacity with OWT. SPS negotiated for replacement capacity from El Paso Natural Gas (“EPNG”), a competitor pipeline to OWT, increasing the capacity SPS holds on EPNG. In conjunction with extending part of the firm transportation service with OWT, SPS also extended its gas storage service with ONEOK Texas Gas Storage (“OTGS”).

This entire arrangement further diversifies SPS's portfolio of firm gas transportation service to the SPS generation portfolio while ensuring reliability for its customers by maintaining the same level of firm hourly service to the plants. The combination of these new contracts resulted in savings for SPS customers of \$5.9 million (Total Company) during the Test Year when compared to an extension of the existing firm capacity with OWT at higher rates.

- SPS participated in EPNG's rate case at Federal Energy Regulatory Commission ("FERC") for the benefit of SPS's customers. On September 30, 2010, EPNG filed a rate case (Docket No. RP10-1398) at FERC. SPS intervened and was an active participant in the proceedings, challenging EPNG's proposed methodology for allocating costs to rate zones where SPS holds firm transportation. FERC issued the Final Order in the case on May 3, 2018, ruling, among other matters, in SPS's favor on the cost allocation methodology issue. This decision resulted in a \$12 million refund (including interest) for SPS customers (Total Company), retroactively applicable back to April 2011. This decision also reduced rates prospectively beginning in June 2018. The portion of the refund and the prospective rate reductions that are applicable during the Test Year reflect \$7.0 million in savings for the SPS Texas retail customers.
- In December 2017, the United States Congress passed the Tax Cuts and Jobs Act ("TCJA") which reduced corporate income tax rates from 35% to 21%. In response to that Act, FERC issued Order 849 in Docket No. RM18-1, directing a review of the rate impact from the TCJA for interstate pipelines by filing form 501-G. This filing permits FERC and customers to review pipelines' current rates given their lower tax obligations. FERC's Order permitted four compliance mechanisms for pipelines to either reduce rates or show cause for not changing rates: 1) a limited Section 4 rate reduction filing; 2) a commitment to file a general Section 4 rate reduction filing; 3) provide an explanation why no rate change is needed; and 4) take no action. EPNG filed its form 501-G on October 11, 2018 (Docket No. RP19-73) and elected to provide an explanation why no rate change was needed, despite reflecting a 21.4% return on equity in its form 501-G. SPS and seven other parties filed protests requesting that FERC initiate a review of EPNG's rates. As a result of these protests, EPNG initiated settlement negotiations with its customers to reduce its rates. SPS actively participated in these negotiations and was instrumental in achieving a settlement that provides for significantly reduced rates that will return the benefits of the TCJA to SPS' customers. On March 15, 2019, EPNG filed a settlement agreement that will reduce the reservation rates by 10.6% to 12.5% and the daily usage rates by 50% to 70%, depending on the rate zone on the EPNG system. FERC approved the settlement on May 2, 2019, and the rate reductions, once placed into service, will be retroactively effective on January 1, 2019. This settlement offers SPS' customers estimated savings of \$976,000 (Total Company) per year.
- SPS realigned receipt point capacity on its Northern Natural Gas ("NNG") firm transportation agreement from northern receipt points to locations in the Permian Basin Field Area in the spring of 2018. This realignment took advantage of lower contract

reservation rates at the new receipt points, saving SPS customers \$166,100 (Total Company) during the Test Year.

- SPS continues to contract with NNG for a storage service with a term of June 1, 2008 through March 31, 2028. This contract has been converted from NNG's 4-Step service to a new service requested by SPS specifically for electric generation effective June 1, 2018. Unlike traditional storage services which must be filled during the summer months for use during the winter, the new Electric Generation ("EG") service on NNG allows for withdrawals, and hence protection against price volatility year round, including the summer months when electric demand peaks. This EG service differs from the traditional 4-Step service in that it gives SPS more flexibility to inject and withdraw throughout the year, avoiding potential counter-season charges and/or intraday gas purchase premiums. It is estimated that this conversion will save SPS customers approximately \$244,000 (Total Company) per year through the remaining term of the contract.

**Southwestern Public Service Company**

**Fuel Costs Over/Under Recovery**

This schedule is not applicable. As discussed in the testimony of William A. Grant, Southwestern Public Service Company (“SPS”) has not filed a fuel reconciliation with its current base rate case in accordance with the Order in Project No. 41905 and 16 Tex. Admin. Code § 25.236 (“TAC”) as revised in that project. Additionally, SPS is not proposing a new fuel factor under 16 TAC § 25.237.