



**IN THE MATTER OF ADVICE NO. 961 - GAS OF PUBLIC
SERVICE COMPANY OF COLORADO TO REVISE ITS
COLORADO P.U.C. NO. 6 - GAS TARIFF TO INCREASE
JURISDICTIONAL BASE RATE REVENUES, IMPLEMENT NEW
BASE RATES FOR ALL GAS RATE SCHEDULES AND MAKE
OTHER PROPOSED TARIFF CHANGES EFFECTIVE MARCH 5,
2020**

Hearing Exhibit 102

Direct Testimony of Luke A. Litteken

Proceeding No. 20AL-XXXXG

Attachment LAL-8

February 5, 2020

TABLE OF CONTENTS

<u>Project</u>	<u>Page</u>
Craig Compressor	3
Gunnison Compressor	4
Sterling Ranch	5
Amazon -- 144th Ave & Washington IP	6
Harmony Ridge	7
CO/Prologis Park	8
CO/DMR/Highlands PL/W Colfax IP	9
CO/Painted Prairie	10
CO/DMR/Auraria Campus Steam Conversion	11

Craig Compressor Craig, Colorado

Project Overview

Scope: Install two 740 brake horsepower (bHp) unit south of the town of Craig

Pressure System: High pressure pipeline (850 psig)

Project Status

Estimate: Complete

Design: Complete

Construction: Complete

In Service Date: October 2017

Project Details

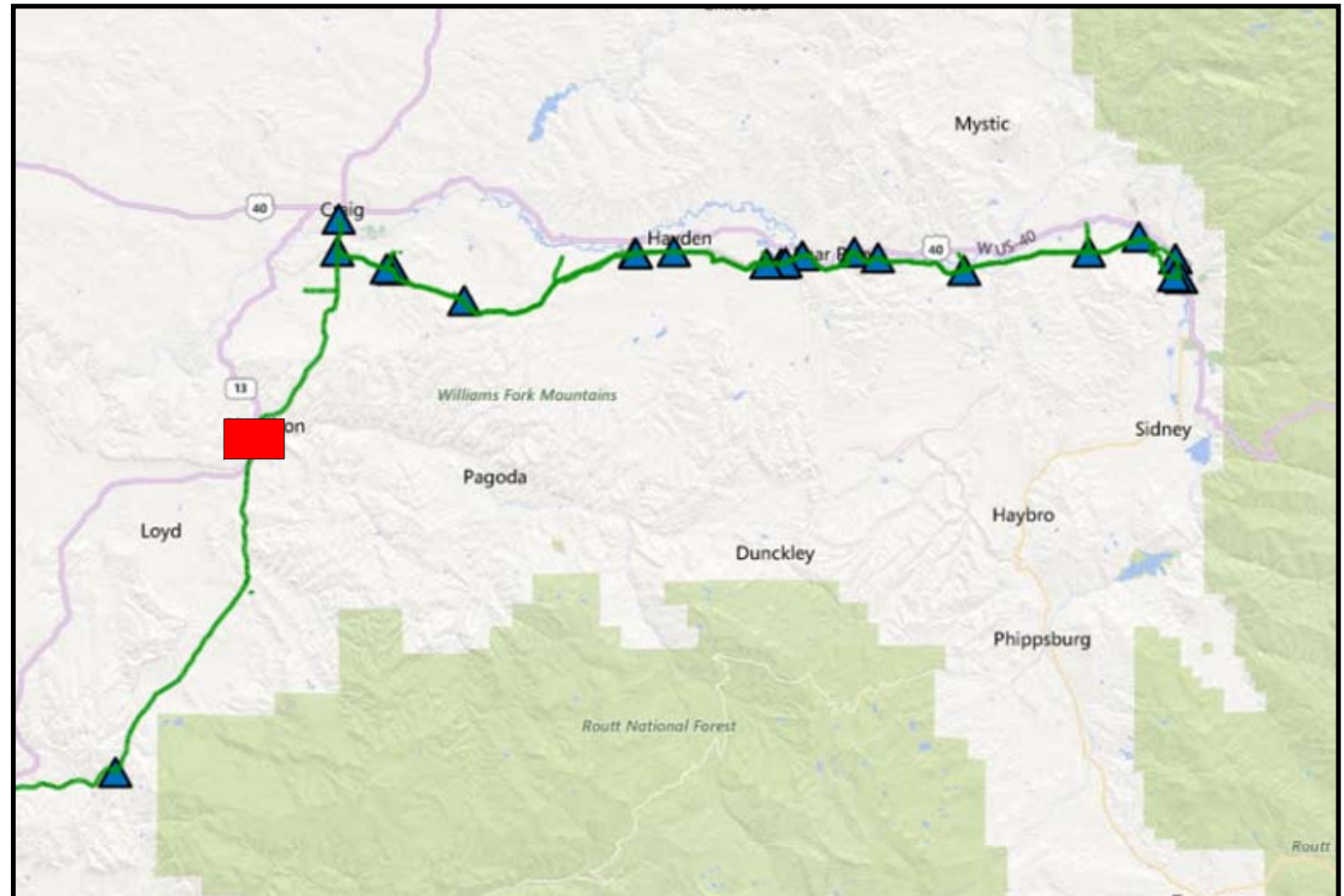
Project Need: This project serves the communities of surrounding Steamboat Springs where the distribution of the gas is performed by Atmos Energy. This project is due to a request from Atmos to increase their Peak Daily Quantity (PDQ) for the Steamboat Springs area.

Cost Allocation

Project Cost: \$9.7 Million

Review Process: This project was reviewed by the designer's local management to verify that the route, materials, and scope match with the needs of the system and that best engineering practices were followed.

Project Location



Gunnison Compressor Gunnison, Colorado

Project Overview

Scope: Install a single 740 brake horsepower (bHp) unit west of the town of Gunnison

Pressure System: High pressure pipeline (850 psig)

Project Status

Estimate: Complete
Design: Complete
Construction: Complete
In Service Date: January 2019

Project Details

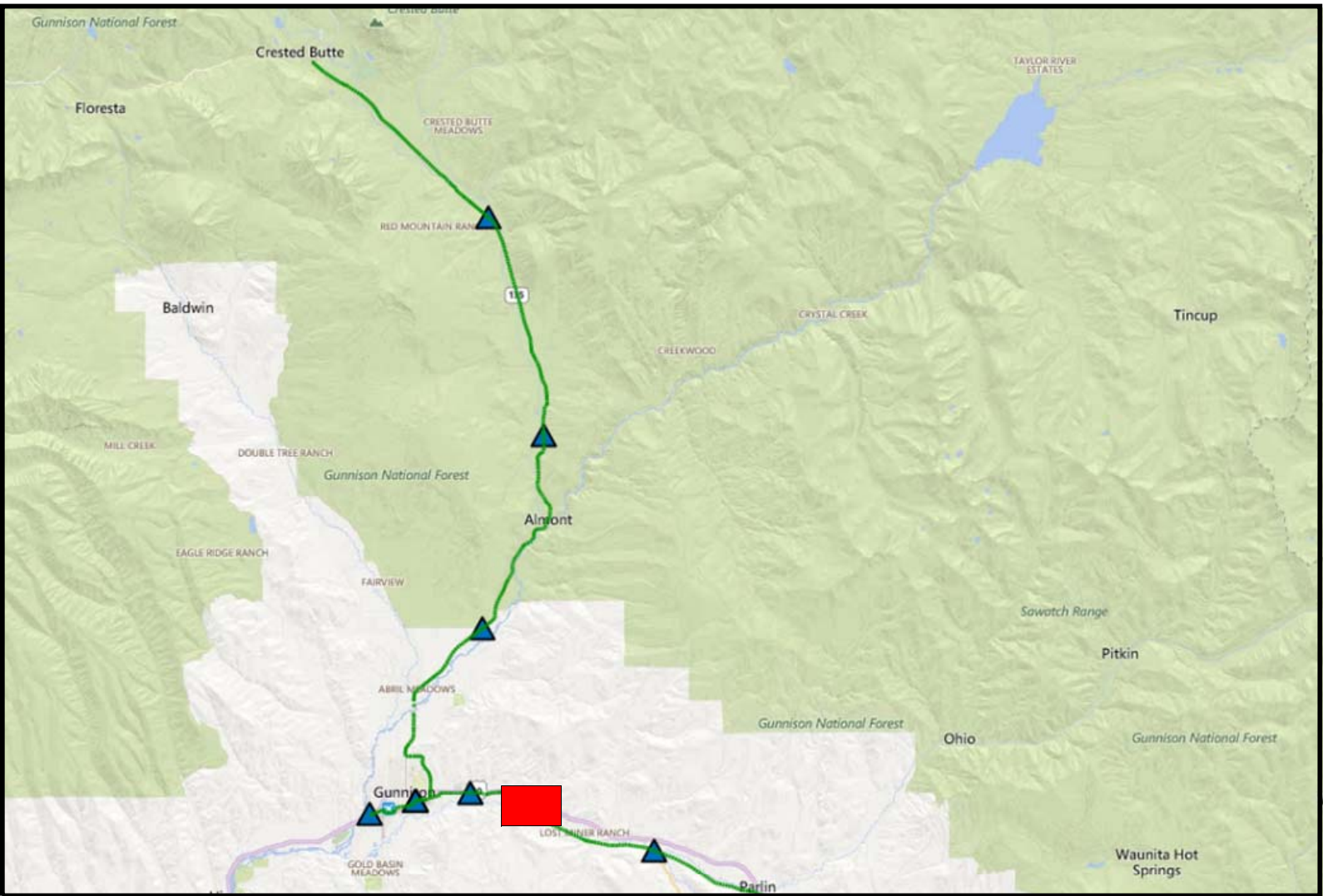
Project Need: This project serves the communities of Gunnison and Crested Butte where the distribution of the gas is performed by Atmos Energy. This project is due to a request from Atmos to increase their Peak Daily Quantity (PDQ) for both Gunnison and Crested Butte.

Cost Allocation

Project Cost: \$8.2 Million

Review Process: This project was reviewed by the designer's local management to verify that the route, materials, and scope match with the needs of the system and that best engineering practices were followed.

Project Location



Sterling Ranch Highland Ranch, CO

Project Overview

Scope: Install 4 miles of 12 inch and 2.8 miles of 8 inch high pressure main and a new regulator station to serve the new development at Sterling Ranch.

Pressure System: High Pressure (285 psig)

Project Status

Estimate: Complete

Design: Complete

Construction: Complete

In Service Date: January 2019

Project Details

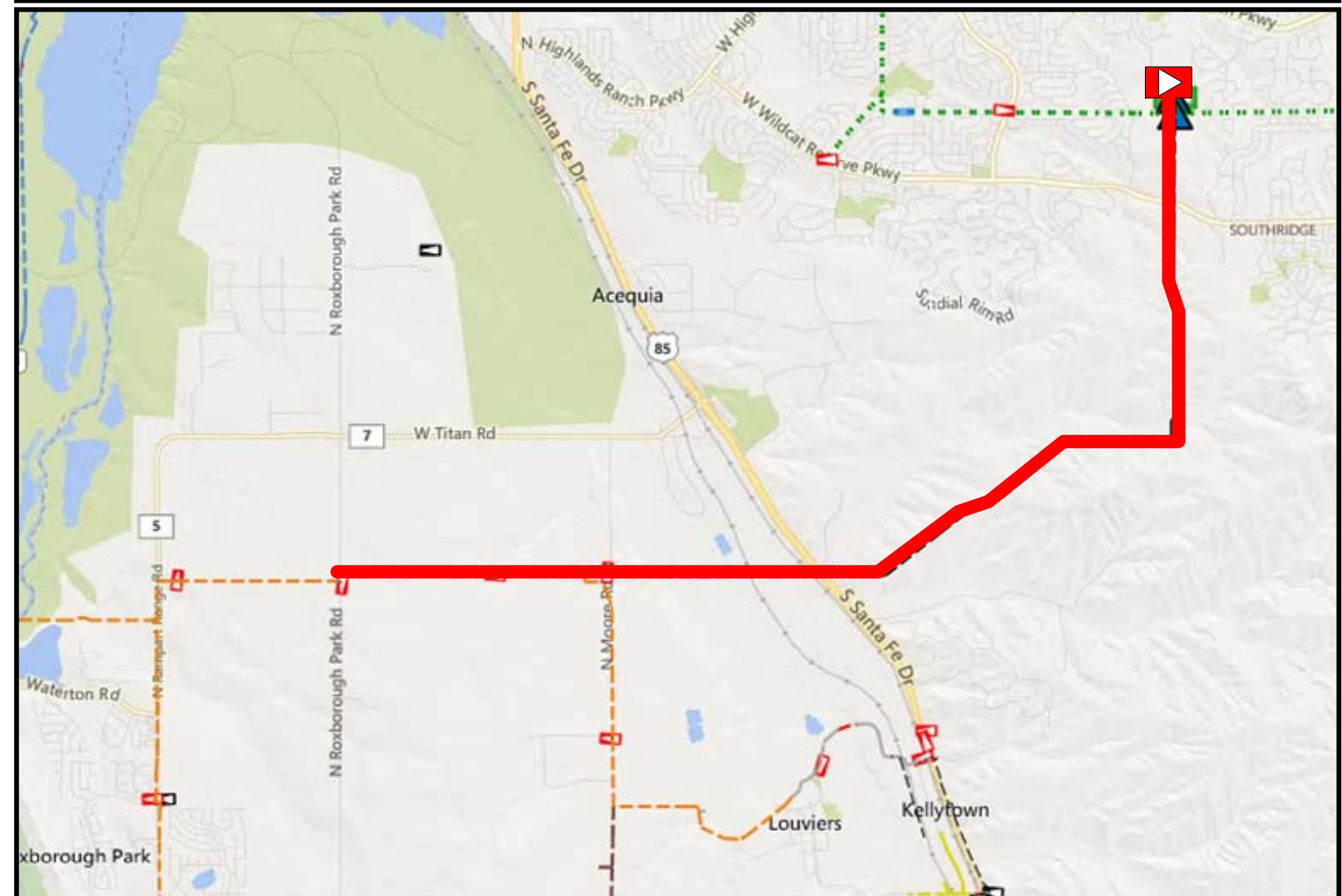
Project Needs: The Sterling Ranch development is installing approximately 13,000 homes directly south of Chatfield Reservoir.

Cost

Project Capital Expenditure Cost: \$14.5 million

Review Process: This project was reviewed by the designer's local management to verify that the route, materials, and scope match with the needs of the system and that best engineering practices were followed.

Project Location



Amazon – 144th Ave & Washington IP Thornton, Colorado

Project Overview

Scope: Install 1,470 feet of 4 inch steel intermediate pressure main to serve Amazon's new building at E 144th Ave and Washington Street.

Pressure System: Intermediate Pressure(150 psig)

Project Status

Estimate: Complete

Design: Complete

Construction: Complete

In Service Date: December 2018

Project Details

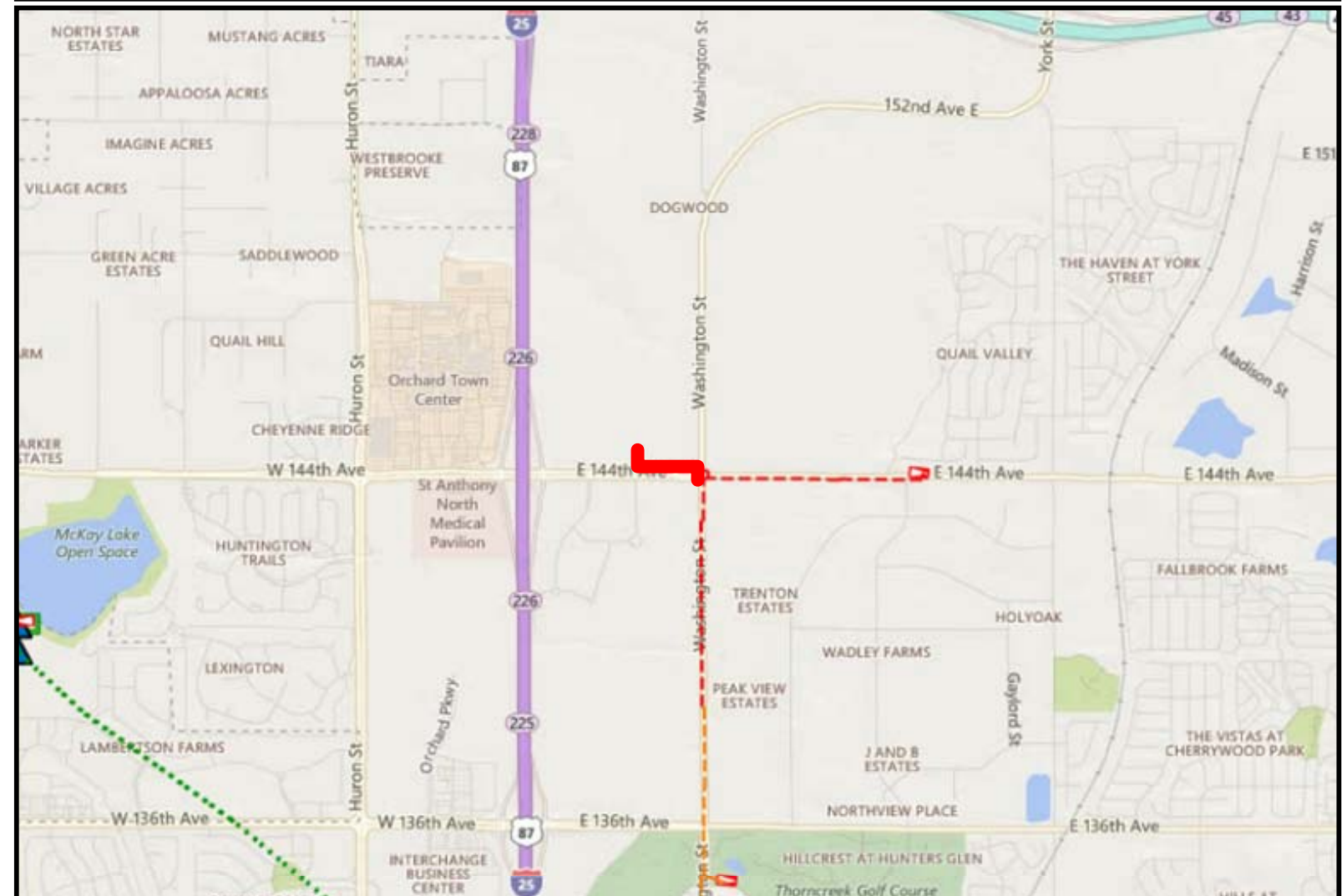
Project Needs: New business project to serve a new customer.

Cost

Project Capital Expenditure Cost: \$1.9 million

Review Process: This project was reviewed by the designer's local management to verify that the route, materials, and scope match with the needs of the system and that best engineering practices were followed.

Project Location



Harmony Ridge Windsor, Colorado

Project Overview

Scope: Install approximately 1.5 miles of 6 inch steel intermediate pressure main to serve the new subdivision at Harmony Ridge.

Pressure System: Intermediate Pressure (150 psig)

Project Status

Estimate: Complete
Design: Complete
Construction: Complete
In Service Date: October 2018

Project Details

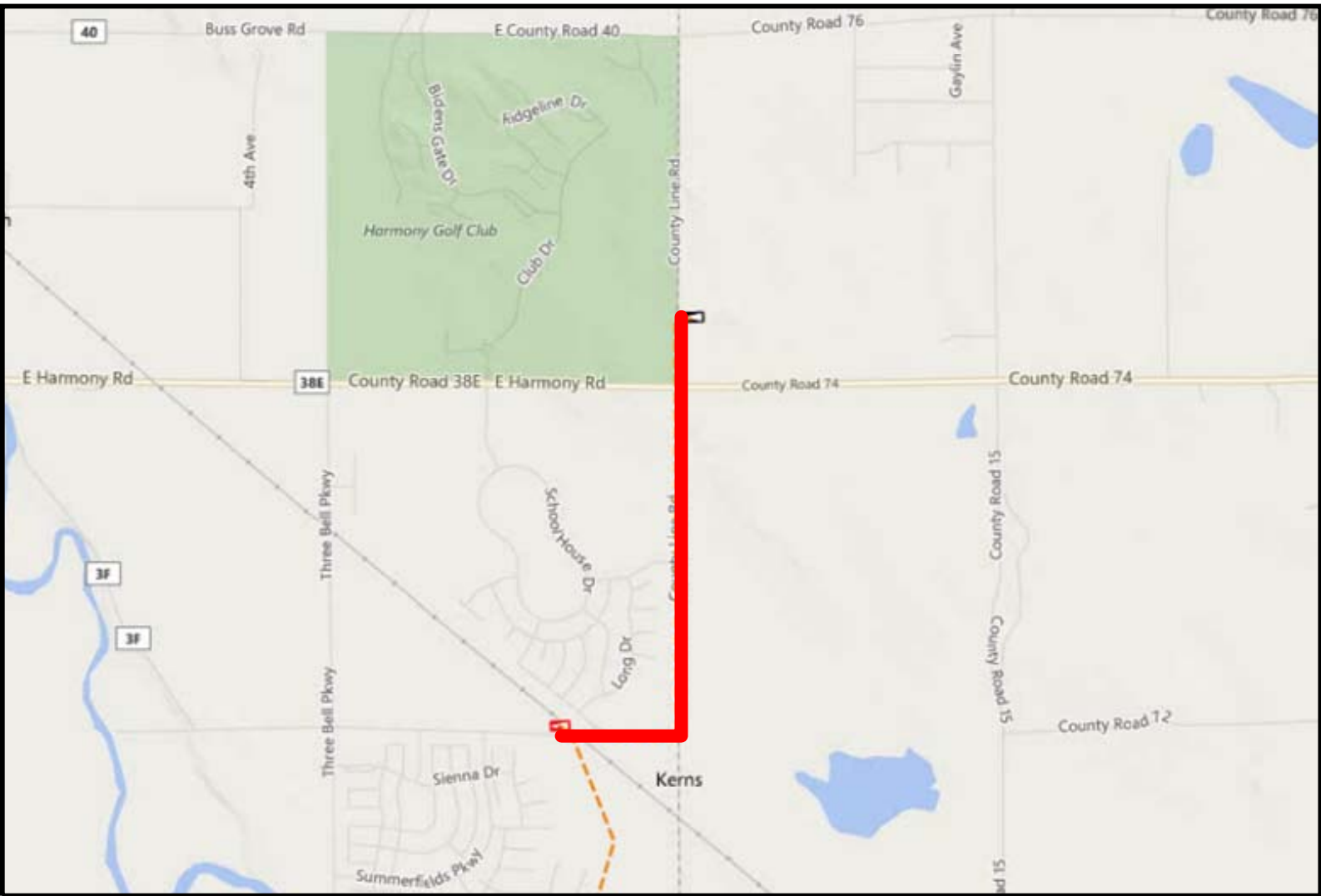
Project Needs: The project provide service to the new subdivision at Harmony Ridge in Windsor. The subdivision adds approximately 1,200 new customers.

Cost

Project Capital Expenditure Cost: \$1.5 million

Review Process: This project was reviewed by the designer’s local management to verify that the route, materials, and scope match with the needs of the system and that best engineering practices were followed.

Project Location



CO/Prologis Park Aurora, Colorado

Project Overview

Scope: Install approximately 6,000 feet of 6 inch intermediate pressure main

Pressure System: intermedia pressure (150 psig)

Project Status

Estimate: Complete
Design: Complete
Construction: Complete
In Service Date: September 2017

Project Details

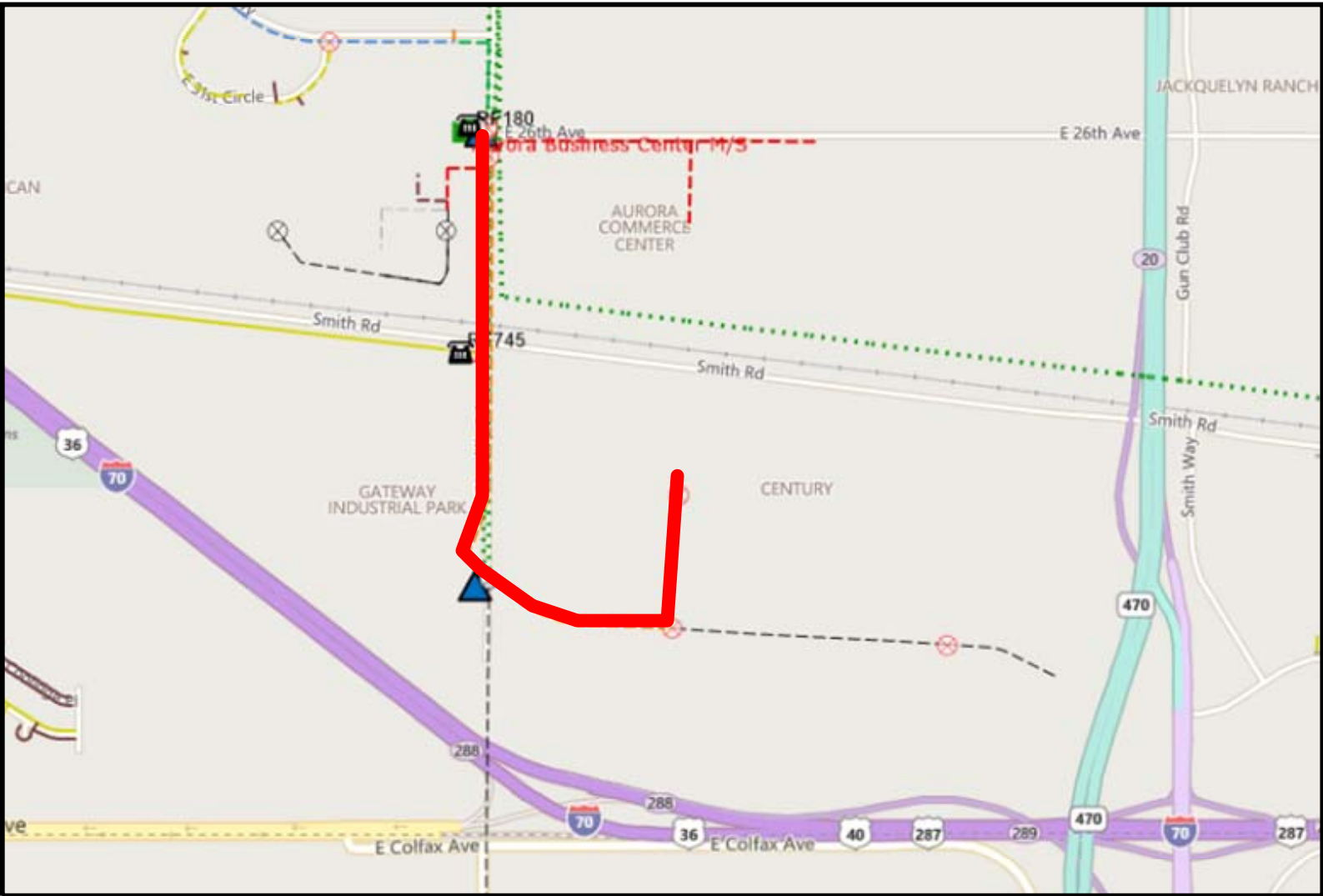
Project Needs: The Prologis commercial park is located at approximately Piccadilly Road and E 19th Ave

Cost

Project Capital Expenditure Cost: \$1.4 million

Review Process: This project was reviewed by the designer’s local management to verify that the route, materials, and scope match with the needs of the system and that best engineering practices were followed.

Project Location



CO/DMR/Highlands PL/W Colfax/IP Denver, Colorado

Project Overview

Scope: Install approximately 3,000 feet of intermediate pressure 6 inch main, a new regulator station and 4,000 feet of 6 inch polyethylene.

Pressure System: Intermediate Pressure (150 psig) and Pounds Low (15 psig)

Project Status

Estimate: Complete

Design: In Design

Construction: In Design

In Service Date: September 2020

Project Details

Project Needs: New business growth in the W Colfax area is requiring new main and a new source of gas to provide supply.

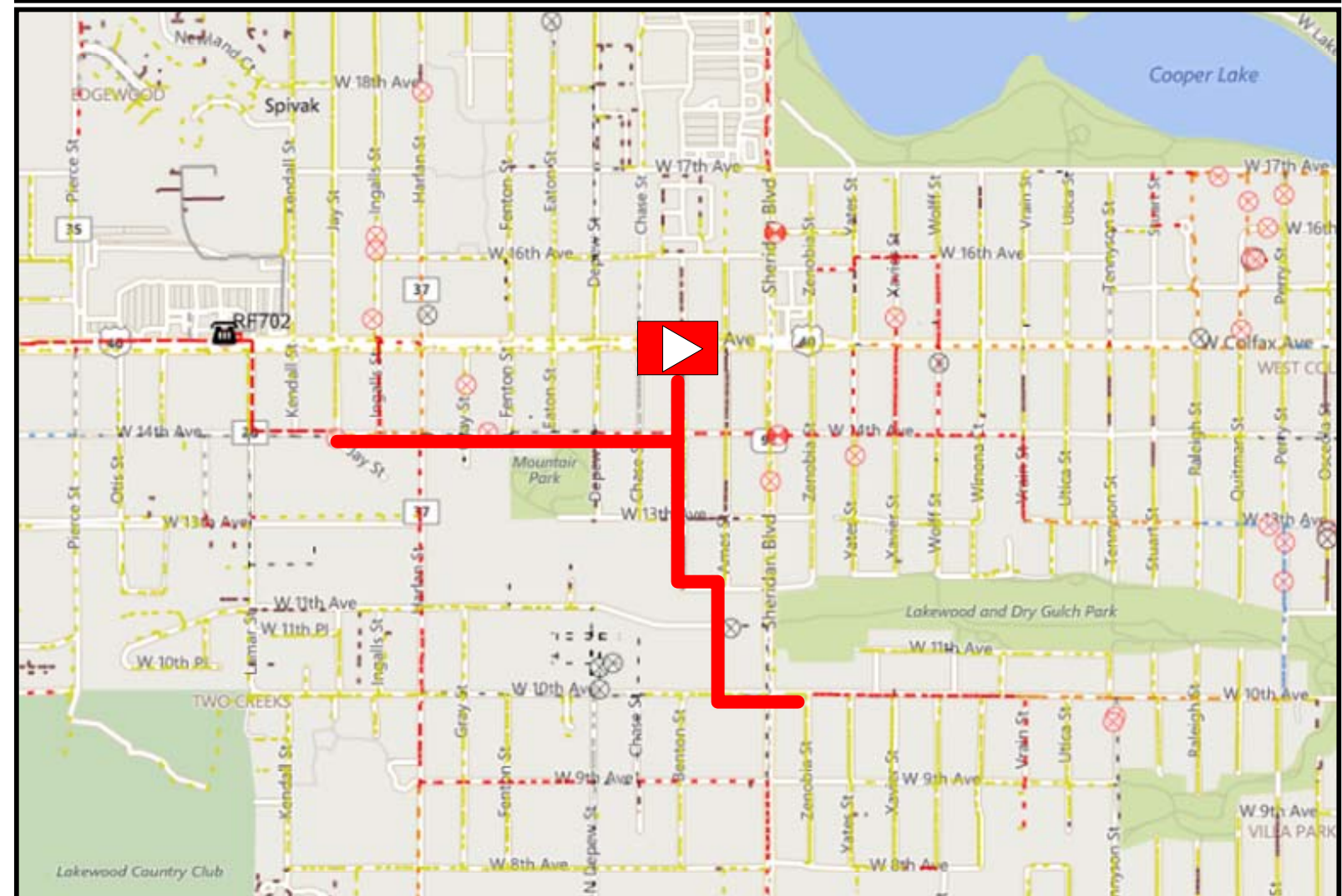
Cost

Project Capital Expenditure Cost: \$2.3 million

Project Capital Expenditure Estimate: New Business Projects are estimated by either a project manager or a project engineer. The estimate takes into account route, materials, and known utilities. New Business projects are either bid outright for a lump sum contract or utilize unit pricing that was bid under a master service level agreement. The method used depends on the scale of the project.

Review Process: This project was reviewed by the designer's local management to verify that the route, materials, and scope match with the needs of the system and that best engineering practices were followed.

Project Location



CO/Painted Prairie Aurora, Colorado

Project Overview

Scope: Install high pressure (850 psig) to a high pressure (340 psig) regulator station to provide a second feed of gas into the 340 psig high pressure system

Pressure System: high pressure (850 psig) and high pressure (340 psig)

Project Status

Estimate: Complete

Design: Complete

Construction: Complete

In Service Date: December 2019

Project Details

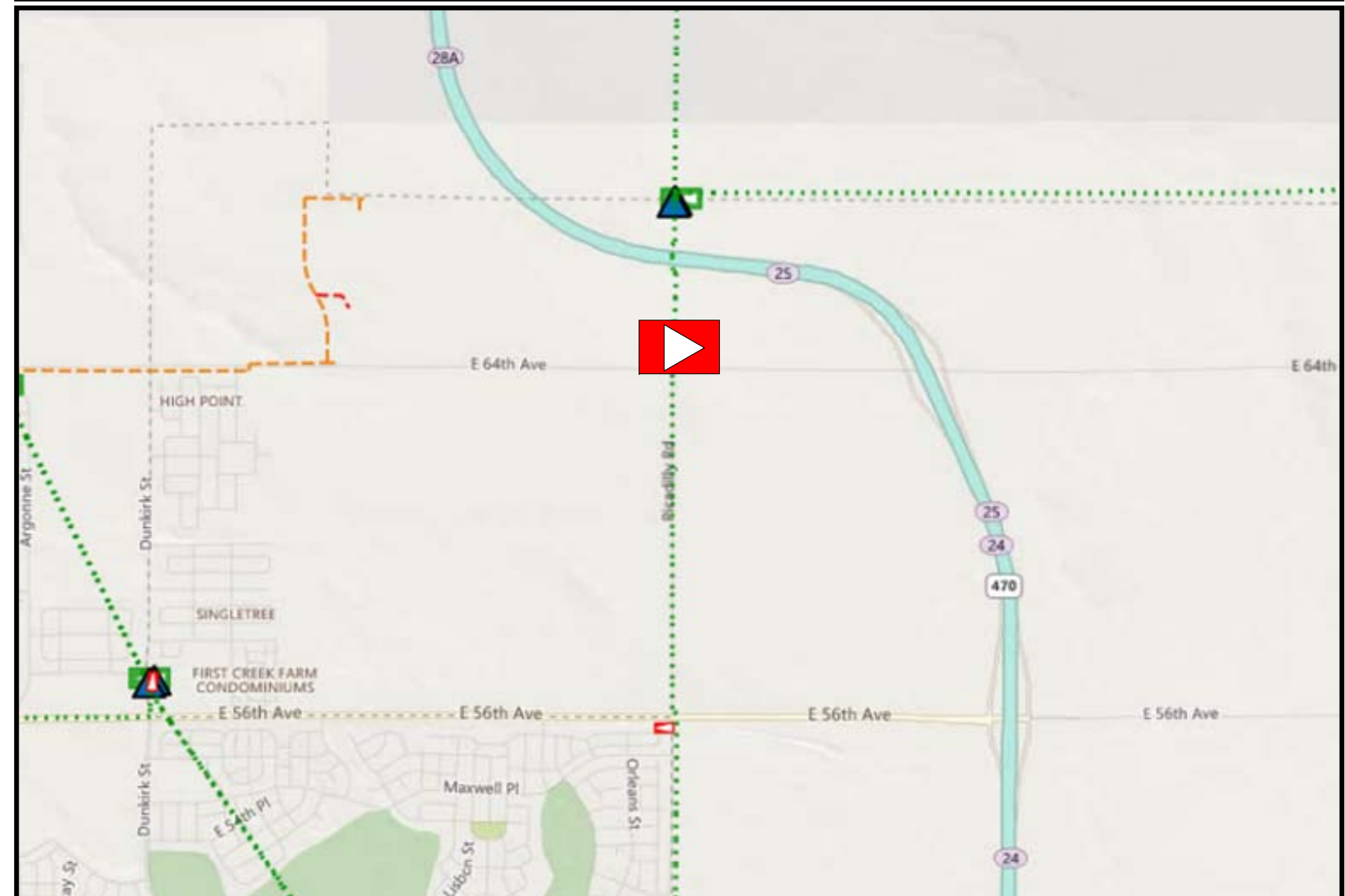
Project Needs: The new Painted Prairie subdivision located at E 64th Ave and Piccadilly Blvd is installing approximately 700 mscfh worth of load which equates to the gas usage of approximately 8,700 single family homes.

Cost

Project Capital Expenditure Cost: \$1.8 million

Review Process: This project was reviewed by the designer's local management to verify that the route, materials, and scope match with the needs of the system and that best engineering practices were followed.

Project Location



CO/DMR/Auraria Campus Steam Conversion

Denver, Colorado

Project Overview

Scope: Install 4,280 feet of 4 inch steel intermediate pressure main to serve Auraria's new heat load

Pressure System: Intermediate Pressure (150 psig)

Project Status

Estimate: Complete

Design: Complete

Construction: Complete

In Service Date: December 2019

Project Details

Project Needs: The Auraria Campus was heated by PSCo's Steam system and has requested to be converted to natural gas. This project installs the mains required to provide service.

Cost

Project Capital Expenditure Cost: \$0.9 million

Review Process: This project was reviewed by the designer's local management to verify that the route, materials, and scope match with the needs of the system and that best engineering practices were followed.

Project Location

