

Southwestern Public Service Company

Fuel by Account Number

Line No.	Account 501	April 2018	May 2018	June 2018	July 2018	August 2018	September 2018
1	Natural Gas	\$ 8,514,654	\$ 11,350,931	\$ 10,114,115	\$ 14,591,137	\$ 12,658,092	\$ 9,108,993
2	Coal	7,388,970	12,167,777	13,362,560	16,933,600	15,215,145	12,952,137
3	Coal - Semi Variable	3,162,291	2,583,097	4,320,189	3,326,964	2,395,952	3,117,438
4	Oil	6,939	0	-	467	-	7,097
5	Coal Ash Sales	-	-	-	-	-	-
6	Fuel Handling	-	-	-	-	-	-
7	Fuel Procurement - Semi Variable	-	-	-	-	-	-
8	Total Account 501	\$ 19,072,854	\$ 26,101,805	\$ 27,796,864	\$ 34,852,167	\$ 30,269,189	\$ 25,185,665
Line No.	Account 547	April 2018	May 2018	June 2018	July 2018	August 2018	September 2018
9	Natural Gas	\$ 2,889,566	\$ 4,502,420	\$ 6,614,382	\$ 9,097,922	\$ 4,591,503	\$ 3,282,072
10	Oil	-	-	-	-	-	-
11	Total Account 547	\$ 2,889,566	\$ 4,502,420	\$ 6,614,382	\$ 9,097,922	\$ 4,591,503	\$ 3,282,072
12	Total Test Year	\$ 21,962,420	\$ 30,604,225	\$ 34,411,246	\$ 43,950,089	\$ 34,860,692	\$ 28,467,736

Notes: All above expenses are variable unless indicated otherwise.

As discussed in the testimony of William A. Grant, Southwestern Public Service Company ("SPS") has not filed a fuel reconciliation with its current base rate case in accordance with the Order in Project No. 41905 and 16 Tex. Admin. Code § 25.236 as revised in that project.

Southwestern Public Service Company

Fuel by Account Number

Line

Account 501	October 2018	November 2018	December 2018	January 2019	February 2019	March 2019	Total
1 Natural Gas	\$ 10,912,353	\$ 11,642,654	\$ 8,200,619	\$ 8,846,368	\$ 6,280,781	\$ 7,264,113	\$ 119,484,809
2 Coal	9,615,856	12,446,632	13,937,673	8,423,143	9,322,508	9,290,772	141,056,772
3 Coal - Semi Variable	2,926,475	3,227,651	3,231,459	3,873,561	2,479,402	2,146,458	36,790,937
4 Oil	8,470	7,474	7,371	5,446	7,381	7,350	57,994
5 Coal Ash Sales	-	-	-	-	-	-	-
6 Fuel Handling	-	-	-	-	-	-	-
7 Fuel Procurement - Semi Variable	-	-	-	-	-	-	-
8 Total Account 501	\$ 23,463,154	\$ 27,324,410	\$ 25,377,122	\$ 21,148,517	\$ 18,090,071	\$ 18,708,694	\$ 297,390,512
Account 547	October 2018	November 2018	December 2018	January 2019	February 2019	March 2019	Total
9 Natural Gas	\$ 2,691,669	\$ 1,017,302	\$ 832,979	\$ 1,932,742	\$ 558,974	\$ 1,946,451	\$ 39,957,981
10 Oil	-	-	-	-	-	-	-
11 Total Account 547	\$ 2,691,669	\$ 1,017,302	\$ 832,979	\$ 1,932,742	\$ 558,974	\$ 1,946,451	\$ 39,957,981
12 Total Test Year	\$ 26,154,824	\$ 28,341,711	\$ 26,210,101	\$ 23,081,259	\$ 18,649,045	\$ 20,655,145	\$ 337,348,492

Southwestern Public Service Company

Fuel Burned

Total Gas - Cunningham

Line No.	MONTH		(1) UNADJUSTED TEST YEAR	(2) ADJUSTMENTS	(3) ADJUSTED TEST YEAR
1	April 2018	\$	764,241	-	764,241
2		MMBTU	397,769	-	397,769
3		\$/MMBTU	1.92	-	1.92
4	May 2018	\$	1,447,705	-	1,447,705
5		MMBTU	782,409	-	782,409
6		\$/MMBTU	1.85	-	1.85
7	June 2018	\$	2,373,634	-	2,373,634
8		MMBTU	916,630	-	916,630
9		\$/MMBTU	2.59	-	2.59
10	July 2018	\$	2,399,811	-	2,399,811
11		MMBTU	1,048,006	-	1,048,006
12		\$/MMBTU	2.29	-	2.29
13	August 2018	\$	2,922,290	-	2,922,290
14		MMBTU	1,214,891	-	1,214,891
15		\$/MMBTU	2.41	-	2.41
16	September 2018	\$	1,976,020	-	1,976,020
17		MMBTU	1,015,116	-	1,015,116
18		\$/MMBTU	1.95	-	1.95
19	October 2018	\$	874,379	-	874,379
20		MMBTU	408,654	-	408,654
21		\$/MMBTU	2.14	-	2.14
22	November 2018	\$	1,402,854	-	1,402,854
23		MMBTU	575,221	-	575,221
24		\$/MMBTU	2.44	-	2.44
25	December 2018	\$	2,041,760	-	2,041,760
26		MMBTU	1,087,491	-	1,087,491
27		\$/MMBTU	1.88	-	1.88
28	January 2019	\$	1,346,235	-	1,346,235
29		MMBTU	547,399	-	547,399
30		\$/MMBTU	2.46	-	2.46
31	February 2019	\$	1,936,555	-	1,936,555
32		MMBTU	972,198	-	972,198
33		\$/MMBTU	1.99	-	1.99
34	March 2019	\$	725,589	-	725,589
35		MMBTU	527,620	-	527,620
36		\$/MMBTU	1.38	-	1.38
37					
38	Totals	\$	<u>20,211,073</u>	<u>-</u>	<u>20,211,073</u>
39		MMBTU	<u>9,493,404</u>	<u>-</u>	<u>9,493,404</u>
40		\$/MMBTU	<u>2.13</u>	<u>-</u>	<u>2.13</u>

Note: As discussed in the testimony of Southwestern Public Service Company ("SPS") witness William A. Grant, SPS has not filed a fuel reconciliation with its current base rate case in accordance with the Order in Project No. 41905 and 16 Tex. Admin. Code § 25.236 ("TAC") as revised in that project. Additionally, SPS is not proposing a new fuel factor under 16 TAC § 25.237 and therefore, rate year data is not applicable.

These amounts also include fuel and handling costs paid to the supplier.

Southwestern Public Service Company

Fuel Burned

			Total Gas - Harrington		
Line No.	MONTH		(1) UNADJUSTED TEST YEAR	(2) ADJUSTMENTS	(3) ADJUSTED TEST YEAR
1	April 2018	\$	34,041	-	34,041
2		MMBTU	15,962	-	15,962
3		\$/MMBTU	2.13	-	2.13
4	May 2018	\$	40,691	-	40,691
5		MMBTU	19,383	-	19,383
6		\$/MMBTU	2.10	-	2.10
7	June 2018	\$	49,830	-	49,830
8		MMBTU	22,586	-	22,586
9		\$/MMBTU	2.21	-	2.21
10	July 2018	\$	17,238	-	17,238
11		MMBTU	6,910	-	6,910
12		\$/MMBTU	2.49	-	2.49
13	August 2018	\$	55,235	-	55,235
14		MMBTU	25,733	-	25,733
15		\$/MMBTU	2.15	-	2.15
16	September 2018	\$	36,343	-	36,343
17		MMBTU	18,145	-	18,145
18		\$/MMBTU	2.00	-	2.00
19	October 2018	\$	34,771	-	34,771
20		MMBTU	17,813	-	17,813
21		\$/MMBTU	1.95	-	1.95
22	November 2018	\$	124,800	-	124,800
23		MMBTU	60,870	-	60,870
24		\$/MMBTU	2.05	-	2.05
25	December 2018	\$	91,764	-	91,764
26		MMBTU	43,406	-	43,406
27		\$/MMBTU	2.11	-	2.11
28	January 2019	\$	67,356	-	67,356
29		MMBTU	28,416	-	28,416
30		\$/MMBTU	2.37	-	2.37
31	February 2019	\$	34,885	-	34,885
32		MMBTU	17,199	-	17,199
33		\$/MMBTU	2.03	-	2.03
34	March 2019	\$	34,331	-	34,331
35		MMBTU	23,261	-	23,261
36		\$/MMBTU	1.48	-	1.48
37					
38	Totals	\$	<u>621,286</u>	<u>-</u>	<u>621,286</u>
39		MMBTU	<u>299,683</u>	<u>-</u>	<u>299,683</u>
40		\$/MMBTU	<u>2.07</u>	<u>-</u>	<u>2.07</u>

Southwestern Public Service Company

Fuel Burned

			Total Gas - Jones		
Line No.	MONTH		(1) UNADJUSTED TEST YEAR	(2) ADJUSTMENTS	(3) ADJUSTED TEST YEAR
1	April 2018	\$	2,848,981	-	2,848,981
2		MMBTU	1,467,382	-	1,467,382
3		\$/MMBTU	1.94	-	1.94
4	May 2018	\$	3,019,508	-	3,019,508
5		MMBTU	1,621,475	-	1,621,475
6		\$/MMBTU	1.86	-	1.86
7	June 2018	\$	2,398,920	-	2,398,920
8		MMBTU	915,901	-	915,901
9		\$/MMBTU	2.62	-	2.62
10	July 2018	\$	3,791,055	-	3,791,055
11		MMBTU	1,724,355	-	1,724,355
12		\$/MMBTU	2.20	-	2.20
13	August 2018	\$	2,878,695	-	2,878,695
14		MMBTU	1,387,212	-	1,387,212
15		\$/MMBTU	2.08	-	2.08
16	September 2018	\$	2,564,876	-	2,564,876
17		MMBTU	1,389,594	-	1,389,594
18		\$/MMBTU	1.85	-	1.85
19	October 2018	\$	3,595,356	-	3,595,356
20		MMBTU	2,017,214	-	2,017,214
21		\$/MMBTU	1.78	-	1.78
22	November 2018	\$	4,110,415	-	4,110,415
23		MMBTU	1,875,911	-	1,875,911
24		\$/MMBTU	2.19	-	2.19
25	December 2018	\$	2,464,375	-	2,464,375
26		MMBTU	1,242,952	-	1,242,952
27		\$/MMBTU	1.98	-	1.98
28	January 2019	\$	2,603,890	-	2,603,890
29		MMBTU	1,144,829	-	1,144,829
30		\$/MMBTU	2.27	-	2.27
31	February 2019	\$	1,272,625	-	1,272,625
32		MMBTU	582,652	-	582,652
33		\$/MMBTU	2.18	-	2.18
34	March 2019	\$	2,191,081	-	2,191,081
35		MMBTU	1,477,834	-	1,477,834
36		\$/MMBTU	1.48	-	1.48
37					
38	Totals	\$	<u>33,739,779</u>	<u>-</u>	<u>33,739,779</u>
39		MMBTU	<u>16,847,310</u>	<u>-</u>	<u>16,847,310</u>
40		\$/MMBTU	<u>2.00</u>	<u>-</u>	<u>2.00</u>

Southwestern Public Service Company

Fuel Burned

Total Gas - Moore County

Line No.	MONTH		(1) UNADJUSTED TEST YEAR	(2) ADJUSTMENTS	(3) ADJUSTED TEST YEAR
1	April 2018	\$	-	-	-
2		MMBTU	-	-	-
3		\$/MMBTU	-	-	-
4	May 2018	\$	-	-	-
5		MMBTU	-	-	-
6		\$/MMBTU	-	-	-
7	June 2018	\$	-	-	-
8		MMBTU	-	-	-
9		\$/MMBTU	-	-	-
10	July 2018	\$	-	-	-
11		MMBTU	-	-	-
12		\$/MMBTU	-	-	-
13	August 2018	\$	-	-	-
14		MMBTU	-	-	-
15		\$/MMBTU	-	-	-
16	September 2018	\$	-	-	-
17		MMBTU	-	-	-
18		\$/MMBTU	-	-	-
19	October 2018	\$	-	-	-
20		MMBTU	-	-	-
21		\$/MMBTU	-	-	-
22	November 2018	\$	-	-	-
23		MMBTU	-	-	-
24		\$/MMBTU	-	-	-
25	December 2018	\$	-	-	-
26		MMBTU	-	-	-
27		\$/MMBTU	-	-	-
28	January 2019	\$	-	-	-
29		MMBTU	-	-	-
30		\$/MMBTU	-	-	-
31	February 2019	\$	-	-	-
32		MMBTU	-	-	-
33		\$/MMBTU	-	-	-
34	March 2019	\$	-	-	-
35		MMBTU	-	-	-
36		\$/MMBTU	-	-	-
37					
38	Totals	\$	-	-	-
39		MMBTU	-	-	-
40		\$/MMBTU	-	-	-

Southwestern Public Service Company

Fuel Burned

Total Gas - Maddox					
Line No.	MONTH		(1) UNADJUSTED TEST YEAR	(2) ADJUSTMENTS	(3) ADJUSTED TEST YEAR
1	April 2018	\$	857,777	-	857,777
2		MMBTU	462,269	-	462,269
3		\$/MMBTU	1.86	-	1.86
4	May 2018	\$	1,086,163	-	1,086,163
5		MMBTU	583,654	-	583,654
6		\$/MMBTU	1.86	-	1.86
7	June 2018	\$	1,227,565	-	1,227,565
8		MMBTU	471,741	-	471,741
9		\$/MMBTU	2.60	-	2.60
10	July 2018	\$	1,004,232	-	1,004,232
11		MMBTU	441,492	-	441,492
12		\$/MMBTU	2.27	-	2.27
13	August 2018	\$	1,334,685	-	1,334,685
14		MMBTU	549,710	-	549,710
15		\$/MMBTU	2.43	-	2.43
16	September 2018	\$	612,022	-	612,022
17		MMBTU	316,720	-	316,720
18		\$/MMBTU	1.93	-	1.93
19	October 2018	\$	18,040	-	18,040
20		MMBTU	(650)	-	(650)
21		\$/MMBTU	(27.75)	-	(27.75)
22	November 2018	\$	(52)	-	(52)
23		MMBTU	(4)	-	(4)
24		\$/MMBTU	0.00	-	0.00
25	December 2018	\$	398,550	-	398,550
26		MMBTU	209,864	-	209,864
27		\$/MMBTU	1.90	-	1.90
28	January 2019	\$	1,091,504	-	1,091,504
29		MMBTU	449,665	-	449,665
30		\$/MMBTU	2.43	-	2.43
31	February 2019	\$	1,000,838	-	1,000,838
32		MMBTU	501,093	-	501,093
33		\$/MMBTU	2.00	-	2.00
34	March 2019	\$	858,106	-	858,106
35		MMBTU	626,071	-	626,071
36		\$/MMBTU	1.37	-	1.37
37					
38	Totals	\$	<u>9,489,430</u>	<u>-</u>	<u>9,489,430</u>
39		MMBTU	<u>4,611,625</u>	<u>-</u>	<u>4,611,625</u>
40		\$/MMBTU	<u>2.06</u>	<u>-</u>	<u>2.06</u>

Southwestern Public Service Company

Fuel Burned

Total Gas - Nichols					
Line No.	MONTH		(1) UNADJUSTED TEST YEAR	(2) ADJUSTMENTS	(3) ADJUSTED TEST YEAR
1	April 2018	\$	1,696,630	-	1,696,630
2		MMBTU	757,960	-	757,960
3		\$/MMBTU	2.24	-	2.24
4	May 2018	\$	2,174,006	-	2,174,006
5		MMBTU	979,479	-	979,479
6		\$/MMBTU	2.22	-	2.22
7	June 2018	\$	2,129,806	-	2,129,806
8		MMBTU	791,769	-	791,769
9		\$/MMBTU	2.69	-	2.69
10	July 2018	\$	3,342,563	-	3,342,563
11		MMBTU	1,413,989	-	1,413,989
12		\$/MMBTU	2.36	-	2.36
13	August 2018	\$	2,698,028	-	2,698,028
14		MMBTU	1,101,095	-	1,101,095
15		\$/MMBTU	2.45	-	2.45
16	September 2018	\$	2,144,411	-	2,144,411
17		MMBTU	912,605	-	912,605
18		\$/MMBTU	2.35	-	2.35
19	October 2018	\$	3,201,301	-	3,201,301
20		MMBTU	1,245,892	-	1,245,892
21		\$/MMBTU	2.57	-	2.57
22	November 2018	\$	2,221,266	-	2,221,266
23		MMBTU	750,653	-	750,653
24		\$/MMBTU	2.96	-	2.96
25	December 2018	\$	2,101,053	-	2,101,053
26		MMBTU	732,874	-	732,874
27		\$/MMBTU	2.87	-	2.87
28	January 2019	\$	1,240,907	-	1,240,907
29		MMBTU	504,696	-	504,696
30		\$/MMBTU	2.46	-	2.46
31	February 2019	\$	1,060,342	-	1,060,342
32		MMBTU	520,751	-	520,751
33		\$/MMBTU	2.04	-	2.04
34	March 2019	\$	1,856,166	-	1,856,166
35		MMBTU	1,212,791	-	1,212,791
36		\$/MMBTU	1.53	-	1.53
37					
38	Totals	\$	<u>25,866,479</u>	<u>-</u>	<u>25,866,479</u>
39		MMBTU	<u>10,924,553</u>	<u>-</u>	<u>10,924,553</u>
40		\$/MMBTU	<u>2.37</u>	<u>-</u>	<u>2.37</u>

Southwestern Public Service Company

Fuel Burned

Total Gas - Plant X					
Line No.	MONTH		(1) UNADJUSTED TEST YEAR	(2) ADJUSTMENTS	(3) ADJUSTED TEST YEAR
1	April 2018	\$	2,178,238	-	2,178,238
2		MMBTU	1,148,866	-	1,148,866
3		\$/MMBTU	1.90	-	1.90
4	May 2018	\$	3,536,854	-	3,536,854
5		MMBTU	1,673,596	-	1,673,596
6		\$/MMBTU	2.11	-	2.11
7	June 2018	\$	1,913,049	-	1,913,049
8		MMBTU	1,016,657	-	1,016,657
9		\$/MMBTU	1.88	-	1.88
10	July 2018	\$	4,034,124	-	4,034,124
11		MMBTU	1,838,355	-	1,838,355
12		\$/MMBTU	2.19	-	2.19
13	August 2018	\$	2,768,961	-	2,768,961
14		MMBTU	1,288,230	-	1,288,230
15		\$/MMBTU	2.15	-	2.15
16	September 2018	\$	1,769,080	-	1,769,080
17		MMBTU	1,029,432	-	1,029,432
18		\$/MMBTU	1.72	-	1.72
19	October 2018	\$	3,177,100	-	3,177,100
20		MMBTU	1,573,046	-	1,573,046
21		\$/MMBTU	2.02	-	2.02
22	November 2018	\$	3,781,580	-	3,781,580
23		MMBTU	1,894,887	-	1,894,887
24		\$/MMBTU	2.00	-	2.00
25	December 2018	\$	992,005	-	992,005
26		MMBTU	335,516	-	335,516
27		\$/MMBTU	2.96	-	2.96
28	January 2019	\$	2,463,040	-	2,463,040
29		MMBTU	1,083,516	-	1,083,516
30		\$/MMBTU	2.27	-	2.27
31	February 2019	\$	958,164	-	958,164
32		MMBTU	511,643	-	511,643
33		\$/MMBTU	1.87	-	1.87
34	March 2019	\$	1,568,250	-	1,568,250
35		MMBTU	1,306,073	-	1,306,073
36		\$/MMBTU	1.20	-	1.20
37					
38	Totals	\$	<u>29,140,445</u>	<u>-</u>	<u>29,140,445</u>
39		MMBTU	<u>14,699,817</u>	<u>-</u>	<u>14,699,817</u>
40		\$/MMBTU	<u>1.98</u>	<u>-</u>	<u>1.98</u>

Southwestern Public Service Company

Fuel Burned

Total Gas - Tolk					
Line No.	MONTH		(1) UNADJUSTED TEST YEAR	(2) ADJUSTMENTS	(3) ADJUSTED TEST YEAR
1	April 2018	\$	134,745	-	134,745
2		MMBTU	57,797	-	57,797
3		\$/MMBTU	2.33	-	2.33
4	May 2018	\$	46,005	-	46,005
5		MMBTU	21,634	-	21,634
6		\$/MMBTU	2.13	-	2.13
7	June 2018	\$	21,311	-	21,311
8		MMBTU	9,762	-	9,762
9		\$/MMBTU	2.18	-	2.18
10	July 2018	\$	2,113	-	2,113
11		MMBTU	590	-	590
12		\$/MMBTU	3.58	-	3.58
13	August 2018	\$	197	-	197
14		MMBTU	(0)	-	(0)
15		\$/MMBTU	0.00	-	0.00
16	September 2018	\$	6,240	-	6,240
17		MMBTU	3,263	-	3,263
18		\$/MMBTU	1.91	-	1.91
19	October 2018	\$	11,405	-	11,405
20		MMBTU	5,870	-	5,870
21		\$/MMBTU	1.94	-	1.94
22	November 2018	\$	1,792	-	1,792
23		MMBTU	627	-	627
24		\$/MMBTU	2.86	-	2.86
25	December 2018	\$	111,111	-	111,111
26		MMBTU	53,151	-	53,151
27		\$/MMBTU	2.09	-	2.09
28	January 2019	\$	33,435	-	33,435
29		MMBTU	13,982	-	13,982
30		\$/MMBTU	2.39	-	2.39
31	February 2019	\$	17,372	-	17,372
32		MMBTU	8,588	-	8,588
33		\$/MMBTU	2.02	-	2.02
34	March 2019	\$	30,590	-	30,590
35		MMBTU	21,195	-	21,195
36		\$/MMBTU	1.44	-	1.44
37					
38	Totals	\$	416,317	-	416,317
39		MMBTU	196,458	-	196,458
40		\$/MMBTU	2.12	-	2.12

Southwestern Public Service Company

Fuel Burned

Total Gas - Carlsbad GT

Line No.	MONTH		(1) UNADJUSTED TEST YEAR	(2) ADJUSTMENTS	(3) ADJUSTED TEST YEAR
1	April 2018	\$	23	-	23
2		MMBTU	-	-	-
3		\$/MMBTU	-	-	-
4	May 2018	\$	(23)	-	(23)
5		MMBTU	-	-	-
6		\$/MMBTU	-	-	-
7	June 2018	\$	-	-	-
8		MMBTU	-	-	-
9		\$/MMBTU	-	-	-
10	July 2018	\$	-	-	-
11		MMBTU	-	-	-
12		\$/MMBTU	-	-	-
13	August 2018	\$	-	-	-
14		MMBTU	-	-	-
15		\$/MMBTU	-	-	-
16	September 2018	\$	-	-	-
17		MMBTU	-	-	-
18		\$/MMBTU	-	-	-
19	October 2018	\$	-	-	-
20		MMBTU	-	-	-
21		\$/MMBTU	-	-	-
22	November 2018	\$	-	-	-
23		MMBTU	-	-	-
24		\$/MMBTU	-	-	-
25	December 2018	\$	-	-	-
26		MMBTU	-	-	-
27		\$/MMBTU	-	-	-
28	January 2019	\$	-	-	-
29		MMBTU	-	-	-
30		\$/MMBTU	-	-	-
31	February 2019	\$	-	-	-
32		MMBTU	-	-	-
33		\$/MMBTU	-	-	-
34	March 2019	\$	-	-	-
35		MMBTU	-	-	-
36		\$/MMBTU	-	-	-
37					
38	Totals	\$	-	-	-
39		MMBTU	-	-	-
40		\$/MMBTU	-	-	-

Southwestern Public Service Company

Fuel Burned

Total Gas - Cunningham GT

Line No.	MONTH		(1) UNADJUSTED TEST YEAR	(2) ADJUSTMENTS	(3) ADJUSTED TEST YEAR
1	April 2018	\$	2,308,967	-	2,308,967
2		MMBTU	1,195,163	-	1,195,163
3		\$/MMBTU	1.93	-	1.93
4	May 2018	\$	2,548,553	-	2,548,553
5		MMBTU	1,369,538	-	1,369,538
6		\$/MMBTU	1.86	-	1.86
7	June 2018	\$	1,876,931	-	1,876,931
8		MMBTU	703,436	-	703,436
9		\$/MMBTU	2.67	-	2.67
10	July 2018	\$	2,785,715	-	2,785,715
11		MMBTU	1,203,203	-	1,203,203
12		\$/MMBTU	2.32	-	2.32
13	August 2018	\$	1,269,454	-	1,269,454
14		MMBTU	465,033	-	465,033
15		\$/MMBTU	2.73	-	2.73
16	September 2018	\$	875,147	-	875,147
17		MMBTU	448,269	-	448,269
18		\$/MMBTU	1.95	-	1.95
19	October 2018	\$	949,450	-	949,450
20		MMBTU	463,986	-	463,986
21		\$/MMBTU	2.05	-	2.05
22	November 2018	\$	(10,082)	-	(10,082)
23		MMBTU	(2)	-	(2)
24		\$/MMBTU	0.00	-	0.00
25	December 2018	\$	235,099	-	235,099
26		MMBTU	123,796	-	123,796
27		\$/MMBTU	1.90	-	1.90
28	January 2019	\$	1,322,732	-	1,322,732
29		MMBTU	546,085	-	546,085
30		\$/MMBTU	2.42	-	2.42
31	February 2019	\$	(438,773)	-	(438,773)
32		MMBTU	(135,356)	-	(135,356)
33		\$/MMBTU	3.24	-	3.24
34	March 2019	\$	999,234	-	999,234
35		MMBTU	729,984	-	729,984
36		\$/MMBTU	1.37	-	1.37
37					
38	Totals	\$	<u>14,722,428</u>	<u>-</u>	<u>14,722,428</u>
39		MMBTU	<u>7,113,135</u>	<u>-</u>	<u>7,113,135</u>
40		\$/MMBTU	<u>2.07</u>	<u>-</u>	<u>2.07</u>

Southwestern Public Service Company

Fuel Burned

Total Gas - Maddox GT					
Line No.	MONTH		(1) UNADJUSTED TEST YEAR	(2) ADJUSTMENTS	(3) ADJUSTED TEST YEAR
1	April 2018	\$	516,486	-	516,486
2		MMBTU	260,622	-	260,622
3		\$/MMBTU	1.98	-	1.98
4	May 2018	\$	881,953	-	881,953
5		MMBTU	476,587	-	476,587
6		\$/MMBTU	1.85	-	1.85
7	June 2018	\$	448,980	-	448,980
8		MMBTU	162,702	-	162,702
9		\$/MMBTU	2.76	-	2.76
10	July 2018	\$	444,175	-	444,175
11		MMBTU	192,951	-	192,951
12		\$/MMBTU	2.30	-	2.30
13	August 2018	\$	407,869	-	407,869
14		MMBTU	167,952	-	167,952
15		\$/MMBTU	2.43	-	2.43
16	September 2018	\$	391,725	-	391,725
17		MMBTU	199,935	-	199,935
18		\$/MMBTU	1.96	-	1.96
19	October 2018	\$	845,493	-	845,493
20		MMBTU	419,230	-	419,230
21		\$/MMBTU	2.02	-	2.02
22	November 2018	\$	633,558	-	633,558
23		MMBTU	261,821	-	261,821
24		\$/MMBTU	2.42	-	2.42
25	December 2018	\$	377,741	-	377,741
26		MMBTU	206,828	-	206,828
27		\$/MMBTU	1.83	-	1.83
28	January 2019	\$	436,281	-	436,281
29		MMBTU	178,639	-	178,639
30		\$/MMBTU	2.44	-	2.44
31	February 2019	\$	367,069	-	367,069
32		MMBTU	182,736	-	182,736
33		\$/MMBTU	2.01	-	2.01
34	March 2019	\$	344,144	-	344,144
35		MMBTU	251,133	-	251,133
36		\$/MMBTU	1.37	-	1.37
37					
38	Totals	\$	<u>6,095,473</u>	<u>-</u>	<u>6,095,473</u>
39		MMBTU	<u>2,961,136</u>	<u>-</u>	<u>2,961,136</u>
40		\$/MMBTU	<u>2.06</u>	<u>-</u>	<u>2.06</u>

Southwestern Public Service Company

Fuel Burned

Total Gas - Jones GT					
Line No.	MONTH		(1) UNADJUSTED TEST YEAR	(2) ADJUSTMENTS	(3) ADJUSTED TEST YEAR
1	April 2018	\$	64,091	-	64,091
2		MMBTU	13,110	-	13,110
3		\$/MMBTU	4.89	-	4.89
4	May 2018	\$	1,071,937	-	1,071,937
5		MMBTU	532,966	-	532,966
6		\$/MMBTU	2.01	-	2.01
7	June 2018	\$	4,288,471	-	4,288,471
8		MMBTU	2,020,009	-	2,020,009
9		\$/MMBTU	2.12	-	2.12
10	July 2018	\$	5,868,032	-	5,868,032
11		MMBTU	2,577,540	-	2,577,540
12		\$/MMBTU	2.28	-	2.28
13	August 2018	\$	2,914,180	-	2,914,180
14		MMBTU	1,087,362	-	1,087,362
15		\$/MMBTU	2.68	-	2.68
16	September 2018	\$	2,015,200	-	2,015,200
17		MMBTU	942,395	-	942,395
18		\$/MMBTU	2.14	-	2.14
19	October 2018	\$	896,726	-	896,726
20		MMBTU	455,079	-	455,079
21		\$/MMBTU	1.97	-	1.97
22	November 2018	\$	393,825	-	393,825
23		MMBTU	172,628	-	172,628
24		\$/MMBTU	2.28	-	2.28
25	December 2018	\$	220,139	-	220,139
26		MMBTU	104,281	-	104,281
27		\$/MMBTU	2.11	-	2.11
28	January 2019	\$	173,729	-	173,729
29		MMBTU	73,468	-	73,468
30		\$/MMBTU	2.36	-	2.36
31	February 2019	\$	630,678	-	630,678
32		MMBTU	307,947	-	307,947
33		\$/MMBTU	2.05	-	2.05
34	March 2019	\$	603,073	-	603,073
35		MMBTU	423,611	-	423,611
36		\$/MMBTU	1.42	-	1.42
37					
38	Totals	\$	<u>19,140,080</u>	<u>-</u>	<u>19,140,080</u>
39		MMBTU	<u>8,710,396</u>	<u>-</u>	<u>8,710,396</u>
40		\$/MMBTU	<u>2.20</u>	<u>-</u>	<u>2.20</u>

Southwestern Public Service Company

Fuel Burned

Total Coal - Harrington					
Line No.	MONTH		(1) UNADJUSTED TEST YEAR	(2) ADJUSTMENTS	(3) ADJUSTED TEST YEAR
1	April 2018	\$	3,878,829	-	3,878,829
2		MMBTU	2,780,576	-	2,780,576
3		\$/MMBTU	1.39	-	1.39
4	May 2018	\$	7,095,088	-	7,095,088
5		MMBTU	4,943,510	-	4,943,510
6		\$/MMBTU	1.44	-	1.44
7	June 2018	\$	7,077,848	-	7,077,848
8		MMBTU	4,847,424	-	4,847,424
9		\$/MMBTU	1.46	-	1.46
10	July 2018	\$	9,463,511	-	9,463,511
11		MMBTU	6,372,500	-	6,372,500
12		\$/MMBTU	1.49	-	1.49
13	August 2018	\$	7,281,760	-	7,281,760
14		MMBTU	4,863,552	-	4,863,552
15		\$/MMBTU	1.50	-	1.50
16	September 2018	\$	4,825,159	-	4,825,159
17		MMBTU	3,180,947	-	3,180,947
18		\$/MMBTU	1.52	-	1.52
19	October 2018	\$	5,316,506	-	5,316,506
20		MMBTU	3,461,947	-	3,461,947
21		\$/MMBTU	1.54	-	1.54
22	November 2018	\$	6,365,195	-	6,365,195
23		MMBTU	4,110,598	-	4,110,598
24		\$/MMBTU	1.55	-	1.55
25	December 2018	\$	7,713,180	-	7,713,180
26		MMBTU	4,939,973	-	4,939,973
27		\$/MMBTU	1.56	-	1.56
28	January 2019	\$	5,734,734	-	5,734,734
29		MMBTU	3,617,603	-	3,617,603
30		\$/MMBTU	1.59	-	1.59
31	February 2019	\$	5,721,128	-	5,721,128
32		MMBTU	3,581,813	-	3,581,813
33		\$/MMBTU	1.60	-	1.60
34	March 2019	\$	5,350,913	-	5,350,913
35		MMBTU	3,347,126	-	3,347,126
36		\$/MMBTU	1.60	-	1.60
37					
38	Totals	\$	<u>75,823,850</u>	<u>-</u>	<u>75,823,850</u>
39		MMBTU	<u>50,047,567</u>	<u>-</u>	<u>50,047,567</u>
40		\$/MMBTU	<u>1.52</u>	<u>-</u>	<u>1.52</u>

Southwestern Public Service Company

Fuel Burned

Total Coal - Tolk					
Line No.	MONTH		(1) UNADJUSTED TEST YEAR	(2) ADJUSTMENTS	(3) ADJUSTED TEST YEAR
1	April 2018	\$	3,510,141	-	3,510,141
2		MMBTU	1,922,909	-	1,922,909
3		\$/MMBTU	1.83	-	1.83
4	May 2018	\$	5,072,689	-	5,072,689
5		MMBTU	2,806,019	-	2,806,019
6		\$/MMBTU	1.81	-	1.81
7	June 2018	\$	6,284,711	-	6,284,711
8		MMBTU	3,506,891	-	3,506,891
9		\$/MMBTU	1.79	-	1.79
10	July 2018	\$	7,470,089	-	7,470,089
11		MMBTU	4,191,887	-	4,191,887
12		\$/MMBTU	1.78	-	1.78
13	August 2018	\$	7,933,385	-	7,933,385
14		MMBTU	4,468,616	-	4,468,616
15		\$/MMBTU	1.78	-	1.78
16	September 2018	\$	8,126,978	-	8,126,978
17		MMBTU	4,071,355	-	4,071,355
18		\$/MMBTU	2.00	-	2.00
19	October 2018	\$	4,299,350	-	4,299,350
20		MMBTU	2,941,060	-	2,941,060
21		\$/MMBTU	1.46	-	1.46
22	November 2018	\$	6,081,436	-	6,081,436
23		MMBTU	3,394,094	-	3,394,094
24		\$/MMBTU	1.79	-	1.79
25	December 2018	\$	6,224,493	-	6,224,493
26		MMBTU	3,462,202	-	3,462,202
27		\$/MMBTU	1.80	-	1.80
28	January 2019	\$	2,688,408	-	2,688,408
29		MMBTU	1,312,733	-	1,312,733
30		\$/MMBTU	2.05	-	2.05
31	February 2019	\$	3,601,380	-	3,601,380
32		MMBTU	1,967,851	-	1,967,851
33		\$/MMBTU	1.83	-	1.83
34	March 2019	\$	3,939,860	-	3,939,860
35		MMBTU	2,160,483	-	2,160,483
36		\$/MMBTU	1.82	-	1.82
37					
38	Totals	\$	65,232,922	-	65,232,922
39		MMBTU	36,206,099	-	36,206,099
40		\$/MMBTU	1.80	-	1.80

Southwestern Public Service Company

Fuel Burned

			Total Oil - Jones		
Line No.	MONTH		(1) UNADJUSTED TEST YEAR	(2) ADJUSTMENTS	(3) ADJUSTED TEST YEAR
1	April 2018	\$	-	-	-
2		MMBTU	-	-	-
3		\$/MMBTU	-	-	-
4	May 2018	\$	-	-	-
5		MMBTU	-	-	-
6		\$/MMBTU	-	-	-
7	June 2018	\$	-	-	-
8		MMBTU	-	-	-
9		\$/MMBTU	-	-	-
10	July 2018	\$	-	-	-
11		MMBTU	-	-	-
12		\$/MMBTU	-	-	-
13	August 2018	\$	-	-	-
14		MMBTU	-	-	-
15		\$/MMBTU	-	-	-
16	September 2018	\$	-	-	-
17		MMBTU	-	-	-
18		\$/MMBTU	-	-	-
19	October 2018	\$	-	-	-
20		MMBTU	-	-	-
21		\$/MMBTU	-	-	-
22	November 2018	\$	-	-	-
23		MMBTU	-	-	-
24		\$/MMBTU	-	-	-
25	December 2018	\$	4,857	-	4,857
26		MMBTU	329	-	329
27		\$/MMBTU	14.77	-	14.77
28	January 2019	\$	-	-	-
29		MMBTU	-	-	-
30		\$/MMBTU	-	-	-
31	February 2019	\$	-	-	-
32		MMBTU	-	-	-
33		\$/MMBTU	-	-	-
34	March 2019	\$	-	-	-
35		MMBTU	-	-	-
36		\$/MMBTU	-	-	-
37					
38	Totals	\$	4,857	-	4,857
39		MMBTU	329	-	329
40		\$/MMBTU	14.77	-	14.77

Southwestern Public Service Company

Fuel Burned

			Total Oil - Plant X		
Line No.	MONTH		(1) UNADJUSTED TEST YEAR	(2) ADJUSTMENTS	(3) ADJUSTED TEST YEAR
1	April 2018	\$	-	-	-
2		MMBTU	-	-	-
3		\$/MMBTU	-	-	-
4	May 2018	\$	-	-	-
5		MMBTU	-	-	-
6		\$/MMBTU	-	-	-
7	June 2018	\$	-	-	-
8		MMBTU	-	-	-
9		\$/MMBTU	-	-	-
10	July 2018	\$	-	-	-
11		MMBTU	-	-	-
12		\$/MMBTU	-	-	-
13	August 2018	\$	-	-	-
14		MMBTU	-	-	-
15		\$/MMBTU	-	-	-
16	September 2018	\$	-	-	-
17		MMBTU	-	-	-
18		\$/MMBTU	-	-	-
19	October 2018	\$	1,387	-	1,387
20		MMBTU	137	-	137
21		\$/MMBTU	10.09	-	10.09
22	November 2018	\$	486	-	486
23		MMBTU	48	-	48
24		\$/MMBTU	10.09	-	10.13
25	December 2018	\$	-	-	-
26		MMBTU	-	-	-
27		\$/MMBTU	-	-	-
28	January 2019	\$	-	-	-
29		MMBTU	-	-	-
30		\$/MMBTU	-	-	-
31	February 2019	\$	-	-	-
32		MMBTU	-	-	-
33		\$/MMBTU	-	-	-
34	March 2019	\$	-	-	-
35		MMBTU	-	-	-
36		\$/MMBTU	-	-	-
37					
38	Totals	\$	1,873	-	1,873
39		MMBTU	186	-	185
40		\$/MMBTU	10.09	-	10.12

Southwestern Public Service Company

Fuel Burned

Line No.	MONTH	Total Oil - Quay			
			(1) UNADJUSTED TEST YEAR	(2) ADJUSTMENTS	(3) ADJUSTED TEST YEAR
1	April 2018	\$	6,939	-	6,939
2		MMBTU	369	-	369
3		\$/MMBTU	18.79	-	18.79
4	May 2018	\$	0	-	0
5		MMBTU	0	-	0
6		\$/MMBTU	0.00	-	0.00
7	June 2018	\$	0	-	0
8		MMBTU	0	-	0
9		\$/MMBTU	0.00	-	0.00
10	July 2018	\$	467	-	467
11		MMBTU	25	-	25
12		\$/MMBTU	18.79	-	18.79
13	August 2018	\$	0	-	0
14		MMBTU	0	-	0
15		\$/MMBTU	0.00	-	0.00
16	September 2018	\$	7,097	-	7,097
17		MMBTU	378	-	378
18		\$/MMBTU	18.79	-	18.79
19	October 2018	\$	7,084	-	7,084
20		MMBTU	377	-	377
21		\$/MMBTU	18.79	-	18.79
22	November 2018	\$	6,987	-	6,987
23		MMBTU	372	-	372
24		\$/MMBTU	18.79	-	18.79
25	December 2018	\$	2,514	-	2,514
26		MMBTU	174	-	174
27		\$/MMBTU	14.47	-	14.47
28	January 2019	\$	5,446	-	5,446
29		MMBTU	290	-	290
30		\$/MMBTU	18.79	-	18.79
31	February 2019	\$	7,381	-	7,381
32		MMBTU	393	-	393
33		\$/MMBTU	18.79	-	18.79
34	March 2019	\$	7,350	-	7,350
35		MMBTU	391	-	391
36		\$/MMBTU	18.82	-	18.82
37					
38	Totals	\$	51,264	-	
39		MMBTU	2,767	-	
40		\$/MMBTU	18.52	-	

Southwestern Public Service Company

Fuel Burned

Total Company - Gas					
Line No.	MONTH		(1) UNADJUSTED TEST YEAR	(2) ADJUSTMENTS	(3) ADJUSTED TEST YEAR
1	April 2018	\$	11,404,220	-	11,404,220
2		MMBTU	5,776,900	-	5,776,900
3		\$/MMBTU	1.97	-	1.97
4	May 2018	\$	15,853,351	-	15,853,351
5		MMBTU	8,060,721	-	8,060,721
6		\$/MMBTU	1.97	-	1.97
7	June 2018	\$	16,728,497	-	16,728,497
8		MMBTU	7,031,193	-	7,031,193
9		\$/MMBTU	2.38	-	2.38
10	July 2018	\$	23,689,059	-	23,689,059
11		MMBTU	10,447,391	-	10,447,391
12		\$/MMBTU	2.27	-	2.27
13	August 2018	\$	17,249,595	-	17,249,595
14		MMBTU	7,287,218	-	7,287,218
15		\$/MMBTU	2.37	-	2.37
16	September 2018	\$	12,391,064	-	12,391,064
17		MMBTU	6,275,474	-	6,275,474
18		\$/MMBTU	1.97	-	1.97
19	October 2018	\$	13,604,022	-	13,604,022
20		MMBTU	6,606,134	-	6,606,134
21		\$/MMBTU	2.06	-	2.06
22	November 2018	\$	12,659,955	-	12,659,955
23		MMBTU	5,592,611	-	5,592,611
24		\$/MMBTU	2.26	-	2.26
25	December 2018	\$	9,033,597	-	9,033,597
26		MMBTU	4,140,159	-	4,140,159
27		\$/MMBTU	2.18	-	2.18
28	January 2019	\$	10,779,110	-	10,779,110
29		MMBTU	4,570,694	-	4,570,694
30		\$/MMBTU	2.36	-	2.36
31	February 2019	\$	6,839,755	-	6,839,755
32		MMBTU	3,469,450	-	3,469,450
33		\$/MMBTU	1.97	-	1.97
34	March 2019	\$	9,210,564	-	9,210,564
35		MMBTU	6,599,572	-	6,599,572
36		\$/MMBTU	1.40	-	1.40
37					
38	Totals	\$	159,442,789	-	159,442,789
39		MMBTU	75,857,517	-	75,857,517
40		\$/MMBTU	2.10	-	2.10

Southwestern Public Service Company

Fuel Burned

Total Company - Coal					
Line No.	MONTH		(1) UNADJUSTED TEST YEAR	(2) ADJUSTMENTS	(3) ADJUSTED TEST YEAR
1	April 2018	\$	7,388,970	-	7,388,970
2		MMBTU	4,703,485	-	4,703,485
3		\$/MMBTU	1.57	-	1.57
4	May 2018	\$	12,167,777	-	12,167,777
5		MMBTU	7,749,529	-	7,749,529
6		\$/MMBTU	1.57	-	1.57
7	June 2018	\$	13,362,560	-	13,362,560
8		MMBTU	8,354,315	-	8,354,315
9		\$/MMBTU	1.60	-	1.60
10	July 2018	\$	16,933,600	-	16,933,600
11		MMBTU	10,564,387	-	10,564,387
12		\$/MMBTU	1.60	-	1.60
13	August 2018	\$	15,215,145	-	15,215,145
14		MMBTU	9,332,168	-	9,332,168
15		\$/MMBTU	1.63	-	1.63
16	September 2018	\$	12,952,137	-	12,952,137
17		MMBTU	7,252,302	-	7,252,302
18		\$/MMBTU	1.79	-	1.79
19	October 2018	\$	9,615,856	-	9,615,856
20		MMBTU	6,403,007	-	6,403,007
21		\$/MMBTU	1.50	-	1.50
22	November 2018	\$	12,446,632	-	12,446,632
23		MMBTU	7,504,692	-	7,504,692
24		\$/MMBTU	1.66	-	1.66
25	December 2018	\$	13,937,673	-	13,937,673
26		MMBTU	8,402,175	-	8,402,175
27		\$/MMBTU	1.66	-	1.66
28	January 2019	\$	8,423,143	-	8,423,143
29		MMBTU	4,930,336	-	4,930,336
30		\$/MMBTU	1.71	-	1.71
31	February 2019	\$	9,322,508	-	9,322,508
32		MMBTU	5,549,663	-	5,549,663
33		\$/MMBTU	1.68	-	1.68
34	March 2019	\$	9,290,772	-	9,290,772
35		MMBTU	5,507,609	-	5,507,609
36		\$/MMBTU	1.69	-	1.69
37					
38	Totals	\$	141,056,772	-	141,056,772
39		MMBTU	86,253,665	-	86,253,665
40		\$/MMBTU	1.64	-	1.64

Southwestern Public Service Company

Fuel Burned

Total Company - Oil					
Line No.	MONTH		(1) UNADJUSTED TEST YEAR	(2) ADJUSTMENTS	(3) ADJUSTED TEST YEAR
1	April 2018	\$	6,939	-	6,939
2		MMBTU	369	-	369
3		\$/MMBTU	18.79	-	18.79
4	May 2018	\$	0	-	0
5		MMBTU	0	-	0
6		\$/MMBTU	0.00	-	0.00
7	June 2018	\$	0	-	0
8		MMBTU	0	-	0
9		\$/MMBTU	0.00	-	0.00
10	July 2018	\$	467	-	467
11		MMBTU	25	-	25
12		\$/MMBTU	18.79	-	18.79
13	August 2018	\$	0	-	0
14		MMBTU	0	-	0
15		\$/MMBTU	0.00	-	0.00
16	September 2018	\$	7,097	-	7,097
17		MMBTU	378	-	378
18		\$/MMBTU	18.79	-	18.79
19	October 2018	\$	8,470	-	8,470
20		MMBTU	514	-	514
21		\$/MMBTU	16.47	-	16.47
22	November 2018	\$	7,474	-	7,474
23		MMBTU	420	-	420
24		\$/MMBTU	17.79	-	17.79
25	December 2018	\$	7,371	-	7,371
26		MMBTU	503	-	503
27		\$/MMBTU	14.67	-	14.67
28	January 2019	\$	5,446	-	5,446
29		MMBTU	290	-	290
30		\$/MMBTU	18.79	-	18.79
31	February 2019	\$	7,381	-	7,381
32		MMBTU	393	-	393
33		\$/MMBTU	18.79	-	18.79
34	March 2019	\$	7,350	-	7,350
35		MMBTU	391	-	391
36		\$/MMBTU	18.82	-	18.82
37					
38	Totals	\$	57,994	-	57,994
39		MMBTU	3,282	-	3,282
40		\$/MMBTU	17.67	-	17.67

Southwestern Public Service Company

Fuel Burned

Total Company - Other					
Line No.	MONTH		(1) UNADJUSTED TEST YEAR	(2) ADJUSTMENTS	(3) ADJUSTED TEST YEAR
1	April 2018	\$	-	-	-
2		MMBTU	-	-	-
3		\$/MMBTU	-	-	-
4	May 2018	\$	-	-	-
5		MMBTU	-	-	-
6		\$/MMBTU	-	-	-
7	June 2018	\$	-	-	-
8		MMBTU	-	-	-
9		\$/MMBTU	-	-	-
10	July 2018	\$	-	-	-
11		MMBTU	-	-	-
12		\$/MMBTU	-	-	-
13	August 2018	\$	-	-	-
14		MMBTU	-	-	-
15		\$/MMBTU	-	-	-
16	September 2018	\$	-	-	-
17		MMBTU	-	-	-
18		\$/MMBTU	-	-	-
19	October 2018	\$	-	-	-
20		MMBTU	-	-	-
21		\$/MMBTU	-	-	-
22	November 2018	\$	-	-	-
23		MMBTU	-	-	-
24		\$/MMBTU	-	-	-
25	December 2018	\$	-	-	-
26		MMBTU	-	-	-
27		\$/MMBTU	-	-	-
28	January 2019	\$	-	-	-
29		MMBTU	-	-	-
30		\$/MMBTU	-	-	-
31	February 2019	\$	-	-	-
32		MMBTU	-	-	-
33		\$/MMBTU	-	-	-
34	March 2019	\$	-	-	-
35		MMBTU	-	-	-
36		\$/MMBTU	-	-	-
37					
38	Totals	\$	-	-	-
39		MMBTU	-	-	-
40		\$/MMBTU	-	-	-

Southwestern Public Service Company

Fuel Burned

Total Company - All Fuels					
Line No.	MONTH		(1) UNADJUSTED TEST YEAR	(2) ADJUSTMENTS	(3) ADJUSTED TEST YEAR
1	April 2018	\$	18,800,128	-	18,800,128
2		MMBTU	10,480,754	-	10,480,754
3		\$/MMBTU	1.79	-	1.79
4	May 2018	\$	28,021,128	-	28,021,128
5		MMBTU	15,810,250	-	15,810,250
6		\$/MMBTU	1.77	-	1.77
7	June 2018	\$	30,091,057	-	30,091,057
8		MMBTU	15,385,508	-	15,385,508
9		\$/MMBTU	1.96	-	1.96
10	July 2018	\$	40,623,125	-	40,623,125
11		MMBTU	21,011,802	-	21,011,802
12		\$/MMBTU	1.93	-	1.93
13	August 2018	\$	32,464,740	-	32,464,740
14		MMBTU	16,619,386	-	16,619,386
15		\$/MMBTU	1.95	-	1.95
16	September 2018	\$	25,350,298	-	25,350,298
17		MMBTU	13,528,153	-	13,528,153
18		\$/MMBTU	1.87	-	1.87
19	October 2018	\$	23,228,349	-	23,228,349
20		MMBTU	13,009,655	-	13,009,655
21		\$/MMBTU	1.79	-	1.79
22	November 2018	\$	25,114,060	-	25,114,060
23		MMBTU	13,097,723	-	13,097,723
24		\$/MMBTU	1.92	-	1.92
25	December 2018	\$	22,978,642	-	22,978,642
26		MMBTU	12,542,836	-	12,542,836
27		\$/MMBTU	1.83	-	1.83
28	January 2019	\$	19,207,698	-	19,207,698
29		MMBTU	9,501,320	-	9,501,320
30		\$/MMBTU	2.02	-	2.02
31	February 2019	\$	16,169,643	-	16,169,643
32		MMBTU	9,019,506	-	9,019,506
33		\$/MMBTU	1.79	-	1.79
34	March 2019	\$	18,508,686	-	18,508,686
35		MMBTU	12,107,571	-	12,107,571
36		\$/MMBTU	1.53	-	1.53
37					
38	Totals	\$	<u>300,557,554</u>	<u>-</u>	<u>300,557,554</u>
39		MMBTU	<u>162,114,464</u>	<u>-</u>	<u>162,114,464</u>
40		\$/MMBTU	<u>1.85</u>	<u>-</u>	<u>1.85</u>

Southwestern Public Service Company**Fossil Fuel Purchased**

Class Plant Supplier	Coal Harrington TUCO, Inc.				
Line No.	MONTH		(1) UNADJUSTED	(2) ADJUSTMENTS	(3) ADJUSTED
1	April 2018	\$			
2		MMBTU			
3		\$/MMBTU			
4	May 2018	\$			
5		MMBTU			
6		\$/MMBTU			
7	June 2018	\$			
8		MMBTU			
9		\$/MMBTU			
10	July 2018	\$			
11		MMBTU			
12		\$/MMBTU			
13	August 2018	\$			
14		MMBTU			
15		\$/MMBTU			
16	September 2018	\$			
17		MMBTU			
18		\$/MMBTU			
19	October 2018	\$			
20		MMBTU			
21		\$/MMBTU			
22	November 2018	\$			
23		MMBTU			
24		\$/MMBTU			
25	December 2018	\$			
26		MMBTU			
27		\$/MMBTU			
28	January 2019	\$			
29		MMBTU			
30		\$/MMBTU			
31	February 2019	\$			
32		MMBTU			
33		\$/MMBTU			
34	March 2019	\$			
35		MMBTU			
36		\$/MMBTU			
37	Total	\$			
38		MMBTU			
39		\$/MMBTU			

Note: These amounts also include fuel and handling costs paid to the supplier.

Southwestern Public Service Company**Fossil Fuel Purchased**

Class Plant Supplier	Coal Tolk TUCO, Inc.		(1) UNADJUSTED	(2) ADJUSTMENTS	(3) ADJUSTED
Line No.	MONTH				
1	April 2018	\$			
2		MMBTU			
3		\$/MMBTU			
4	May 2018	\$			
5		MMBTU			
6		\$/MMBTU			
7	June 2018	\$			
8		MMBTU			
9		\$/MMBTU			
10	July 2018	\$			
11		MMBTU			
12		\$/MMBTU			
13	August 2018	\$			
14		MMBTU			
15		\$/MMBTU			
16	September 2018	\$			
17		MMBTU			
18		\$/MMBTU			
19	October 2018	\$			
20		MMBTU			
21		\$/MMBTU			
22	November 2018	\$			
23		MMBTU			
24		\$/MMBTU			
25	December 2018	\$			
26		MMBTU			
27		\$/MMBTU			
28	January 2019	\$			
29		MMBTU			
30		\$/MMBTU			
31	February 2019	\$			
32		MMBTU			
33		\$/MMBTU			
34	March 2019	\$			
35		MMBTU			
36		\$/MMBTU			
37	Total	\$			
38		MMBTU			
39		\$/MMBTU			

Southwestern Public Service Company**Fossil Fuel Purchased**

Class	Gas			
Plant	Carlsbad			
Supplier	Public Service Company of New Mexico			
Line No.	MONTH	(1) UNADJUSTED	(2) ADJUSTMENTS	(3) ADJUSTED
1	April 2018	\$ 23	-	23
2		MMBTU	-	-
3		\$/MMBTU	-	-
4	May 2018	\$ (23)	-	(23)
5		MMBTU	-	-
6		\$/MMBTU	-	-
7	June 2018	\$ -	-	-
8		MMBTU	-	-
9		\$/MMBTU	-	-
10	July 2018	\$ -	-	-
11		MMBTU	-	-
12		\$/MMBTU	-	-
13	August 2018	\$ -	-	-
14		MMBTU	-	-
15		\$/MMBTU	-	-
16	September 2018	\$ -	-	-
17		MMBTU	-	-
18		\$/MMBTU	-	-
19	October 2018	\$ -	-	-
20		MMBTU	-	-
21		\$/MMBTU	-	-
22	November 2018	\$ -	-	-
23		MMBTU	-	-
24		\$/MMBTU	-	-
25	December 2018	\$ -	-	-
26		MMBTU	-	-
27		\$/MMBTU	-	-
28	January 2019	\$ -	-	-
29		MMBTU	-	-
30		\$/MMBTU	-	-
31	February 2019	\$ -	-	-
32		MMBTU	-	-
33		\$/MMBTU	-	-
34	March 2019	\$ -	-	-
35		MMBTU	-	-
36		\$/MMBTU	-	-
37	Total	\$ -	-	-
38		MMBTU	-	-
39		\$/MMBTU	-	-

Southwestern Public Service Company

Fossil Fuel Purchased

Class	Gas				
Plant	Cunningham - GT				
Supplier	Northern Natural Gas				
Line No.	MONTH		(1) UNADJUSTED	(2) ADJUSTMENTS	(3) ADJUSTED
1	April 2018	\$	1,873,084	-	1,873,084
2		MMBTU	1,151,797	-	1,151,797
3		\$/MMBTU	1.63	-	1.63
4	May 2018	\$	2,341,874	-	2,341,874
5		MMBTU	1,494,026	-	1,494,026
6		\$/MMBTU	1.57	-	1.57
7	June 2018	\$	1,610,298	-	1,610,298
8		MMBTU	689,421	-	689,421
9		\$/MMBTU	2.34	-	2.34
10	July 2018	\$	2,324,079	-	2,324,079
11		MMBTU	1,126,271	-	1,126,271
12		\$/MMBTU	2.06	-	2.06
13	August 2018	\$	1,131,433	-	1,131,433
14		MMBTU	488,282	-	488,282
15		\$/MMBTU	2.32	-	2.32
16	September 2018	\$	682,844	-	682,844
17		MMBTU	458,456	-	458,456
18		\$/MMBTU	1.49	-	1.49
19	October 2018	\$	875,423	-	875,423
20		MMBTU	518,927	-	518,927
21		\$/MMBTU	1.69	-	1.69
22	November 2018	\$	(23,416)	-	(23,416)
23		MMBTU	3,603	-	3,603
24		\$/MMBTU	(6.50)	-	(6.50)
25	December 2018	\$	170,376	-	170,376
26		MMBTU	115,711	-	115,711
27		\$/MMBTU	1.47	-	1.47
28	January 2019	\$	1,180,292	-	1,180,292
29		MMBTU	559,432	-	559,432
30		\$/MMBTU	2.11	-	2.11
31	February 2019	\$	(417,375)	-	(417,375)
32		MMBTU	(146,105)	-	(146,105)
33		\$/MMBTU	2.86	-	2.86
34	March 2019	\$	834,370	-	834,370
35		MMBTU	751,069	-	751,069
36		\$/MMBTU	1.11	-	1.11
37	Total	\$	12,583,282	-	12,583,282
38		MMBTU	7,210,892	-	7,210,892
39		\$/MMBTU	1.75	-	1.75

Southwestern Public Service Company

Fossil Fuel Purchased

Class	Gas			
Plant	Cunningham - GT			
Supplier	El Paso Natural Gas			
Line No.	MONTH	(1) UNADJUSTED	(2) ADJUSTMENTS	(3) ADJUSTED
1	April 2018	\$	-	-
2		MMBTU	-	-
3		\$/MMBTU	-	-
4	May 2018	\$	-	-
5		MMBTU	-	-
6		\$/MMBTU	-	-
7	June 2018	\$	-	-
8		MMBTU	-	-
9		\$/MMBTU	-	-
10	July 2018	\$	-	-
11		MMBTU	-	-
12		\$/MMBTU	-	-
13	August 2018	\$	-	-
14		MMBTU	-	-
15		\$/MMBTU	-	-
16	September 2018	\$	-	-
17		MMBTU	-	-
18		\$/MMBTU	-	-
19	October 2018	\$	-	-
20		MMBTU	-	-
21		\$/MMBTU	-	-
22	November 2018	\$	-	-
23		MMBTU	-	-
24		\$/MMBTU	-	-
25	December 2018	\$	-	-
26		MMBTU	-	-
27		\$/MMBTU	-	-
28	January 2019	\$	-	-
29		MMBTU	-	-
30		\$/MMBTU	-	-
31	February 2019	\$	-	-
32		MMBTU	-	-
33		\$/MMBTU	-	-
34	March 2019	\$	-	-
35		MMBTU	-	-
36		\$/MMBTU	-	-
37	Total	\$	-	-
38		MMBTU	-	-
39		\$/MMBTU	-	-

Southwestern Public Service Company

Fossil Fuel Purchased

Class	Gas				
Plant	Cunningham - ST				
Supplier	Northern Natural Gas				
Line No.	MONTH		(1) UNADJUSTED	(2) ADJUSTMENTS	(3) ADJUSTED
1	April 2018	\$	617,679	-	617,679
2		MMBTU	381,572	-	381,572
3		\$/MMBTU	1.62	-	1.62
4	May 2018	\$	1,336,099	-	1,336,099
5		MMBTU	855,680	-	855,680
6		\$/MMBTU	1.56	-	1.56
7	June 2018	\$	2,041,265	-	2,041,265
8		MMBTU	920,144	-	920,144
9		\$/MMBTU	2.22	-	2.22
10	July 2018	\$	2,033,193	-	2,033,193
11		MMBTU	994,980	-	994,980
12		\$/MMBTU	2.04	-	2.04
13	August 2018	\$	2,707,644	-	2,707,644
14		MMBTU	1,344,198	-	1,344,198
15		\$/MMBTU	2.01	-	2.01
16	September 2018	\$	1,541,476	-	1,541,476
17		MMBTU	1,038,777	-	1,038,777
18		\$/MMBTU	1.48	-	1.48
19	October 2018	\$	711,794	-	711,794
20		MMBTU	364,398	-	364,398
21		\$/MMBTU	1.95	-	1.95
22	November 2018	\$	999,367	-	999,367
23		MMBTU	510,811	-	510,811
24		\$/MMBTU	1.96	-	1.96
25	December 2018	\$	1,496,282	-	1,496,282
26		MMBTU	1,031,020	-	1,031,020
27		\$/MMBTU	1.45	-	1.45
28	January 2019	\$	1,187,685	-	1,187,685
29		MMBTU	556,587	-	556,587
30		\$/MMBTU	2.13	-	2.13
31	February 2019	\$	1,629,825	-	1,629,825
32		MMBTU	968,695	-	968,695
33		\$/MMBTU	1.68	-	1.68
34	March 2019	\$	618,967	-	618,967
35		MMBTU	556,225	-	556,225
36		\$/MMBTU	1.11	-	1.11
37	Total	\$	16,921,278	-	16,921,278
38		MMBTU	9,523,087	-	9,523,087
39		\$/MMBTU	1.78	-	1.78

Southwestern Public Service Company

Fossil Fuel Purchased

Class	Gas			
Plant	Cunningham - ST			
Supplier	El Paso Natural Gas			
Line No.	MONTH	(1) UNADJUSTED	(2) ADJUSTMENTS	(3) ADJUSTED
1	April 2018	\$	-	-
2		MMBTU	-	-
3		\$/MMBTU	-	-
4	May 2018	\$	-	-
5		MMBTU	-	-
6		\$/MMBTU	-	-
7	June 2018	\$	-	-
8		MMBTU	-	-
9		\$/MMBTU	-	-
10	July 2018	\$	-	-
11		MMBTU	-	-
12		\$/MMBTU	-	-
13	August 2018	\$	-	-
14		MMBTU	-	-
15		\$/MMBTU	-	-
16	September 2018	\$	-	-
17		MMBTU	-	-
18		\$/MMBTU	-	-
19	October 2018	\$	-	-
20		MMBTU	-	-
21		\$/MMBTU	-	-
22	November 2018	\$	-	-
23		MMBTU	-	-
24		\$/MMBTU	-	-
25	December 2018	\$	-	-
26		MMBTU	-	-
27		\$/MMBTU	-	-
28	January 2019	\$	-	-
29		MMBTU	-	-
30		\$/MMBTU	-	-
31	February 2019	\$	-	-
32		MMBTU	-	-
33		\$/MMBTU	-	-
34	March 2019	\$	-	-
35		MMBTU	-	-
36		\$/MMBTU	-	-
37	Total	\$	-	-
38		MMBTU	-	-
39		\$/MMBTU	-	-

Southwestern Public Service Company

Fossil Fuel Purchased

Class	Gas			
Plant	Harrington			
Supplier	Northern Natural Gas			
Line No.	MONTH	(1) UNADJUSTED	(2) ADJUSTMENTS	(3) ADJUSTED
1	April 2018	\$	-	-
2		MMBTU	-	-
3		\$/MMBTU	-	-
4	May 2018	\$	-	-
5		MMBTU	-	-
6		\$/MMBTU	-	-
7	June 2018	\$	-	-
8		MMBTU	-	-
9		\$/MMBTU	-	-
10	July 2018	\$	-	-
11		MMBTU	-	-
12		\$/MMBTU	-	-
13	August 2018	\$	-	-
14		MMBTU	-	-
15		\$/MMBTU	-	-
16	September 2018	\$	-	-
17		MMBTU	-	-
18		\$/MMBTU	-	-
19	October 2018	\$	-	-
20		MMBTU	-	-
21		\$/MMBTU	-	-
22	November 2018	\$	-	-
23		MMBTU	-	-
24		\$/MMBTU	-	-
25	December 2018	\$	-	-
26		MMBTU	-	-
27		\$/MMBTU	-	-
28	January 2019	\$	-	-
29		MMBTU	-	-
30		\$/MMBTU	-	-
31	February 2019	\$	-	-
32		MMBTU	-	-
33		\$/MMBTU	-	-
34	March 2019	\$	-	-
35		MMBTU	-	-
36		\$/MMBTU	-	-
37	Total	\$	-	-
38		MMBTU	-	-
39		\$/MMBTU	-	-

Southwestern Public Service Company

Fossil Fuel Purchased

Class Plant Supplier	Gas Harrington Westex				
Line No.	MONTH		(1) UNADJUSTED	(2) ADJUSTMENTS	(3) ADJUSTED
1	April 2018	\$	17,441	-	17,441
2		MMBTU	13,253	-	13,253
3		\$/MMBTU	1.32	-	1.32
4	May 2018	\$	34,204	-	34,204
5		MMBTU	18,852	-	18,852
6		\$/MMBTU	1.81	-	1.81
7	June 2018	\$	46,788	-	46,788
8		MMBTU	24,206	-	24,206
9		\$/MMBTU	1.93	-	1.93
10	July 2018	\$	13,700	-	13,700
11		MMBTU	5,890	-	5,890
12		\$/MMBTU	2.33	-	2.33
13	August 2018	\$	51,788	-	51,788
14		MMBTU	26,960	-	26,960
15		\$/MMBTU	1.92	-	1.92
16	September 2018	\$	27,584	-	27,584
17		MMBTU	17,241	-	17,241
18		\$/MMBTU	1.60	-	1.60
19	October 2018	\$	31,647	-	31,647
20		MMBTU	18,454	-	18,454
21		\$/MMBTU	1.71	-	1.71
22	November 2018	\$	99,353	-	99,353
23		MMBTU	61,452	-	61,452
24		\$/MMBTU	1.62	-	1.62
25	December 2018	\$	80,169	-	80,169
26		MMBTU	44,272	-	44,272
27		\$/MMBTU	1.81	-	1.81
28	January 2019	\$	53,103	-	53,103
29		MMBTU	25,630	-	25,630
30		\$/MMBTU	2.07	-	2.07
31	February 2019	\$	31,727	-	31,727
32		MMBTU	21,339	-	21,339
33		\$/MMBTU	1.49	-	1.49
34	March 2019	\$	22,833	-	22,833
35		MMBTU	24,062	-	24,062
36		\$/MMBTU	0.95	-	0.95
37	Total	\$	510,335	-	510,335
38		MMBTU	301,609	-	301,609
39		\$/MMBTU	1.69	-	1.69

Southwestern Public Service Company

Fossil Fuel Purchased

Class	Gas				
Plant	Jones				
Supplier	Northern Natural Gas				
Line No.	MONTH		(1) UNADJUSTED	(2) ADJUSTMENTS	(3) ADJUSTED
1	April 2018	\$	1,684,629	-	1,684,629
2		MMBTU	1,016,983	-	1,016,983
3		\$/MMBTU	1.66	-	1.66
4	May 2018	\$	989,282	-	989,282
5		MMBTU	776,676	-	776,676
6		\$/MMBTU	1.27	-	1.27
7	June 2018	\$	2,774,104	-	2,774,104
8		MMBTU	1,374,006	-	1,374,006
9		\$/MMBTU	2.02	-	2.02
10	July 2018	\$	2,327,276	-	2,327,276
11		MMBTU	1,259,130	-	1,259,130
12		\$/MMBTU	1.85	-	1.85
13	August 2018	\$	2,896,398	-	2,896,398
14		MMBTU	1,563,663	-	1,563,663
15		\$/MMBTU	1.85	-	1.85
16	September 2018	\$	1,554,510	-	1,554,510
17		MMBTU	1,062,743	-	1,062,743
18		\$/MMBTU	1.46	-	1.46
19	October 2018	\$	1,303,793	-	1,303,793
20		MMBTU	1,034,374	-	1,034,374
21		\$/MMBTU	1.26	-	1.26
22	November 2018	\$	1,658,292	-	1,658,292
23		MMBTU	1,070,042	-	1,070,042
24		\$/MMBTU	1.55	-	1.55
25	December 2018	\$	422,130	-	422,130
26		MMBTU	558,273	-	558,273
27		\$/MMBTU	0.76	-	0.76
28	January 2019	\$	1,151,949	-	1,151,949
29		MMBTU	618,675	-	618,675
30		\$/MMBTU	1.86	-	1.86
31	February 2019	\$	(36,143)	-	(36,143)
32		MMBTU	(23,326)	-	(23,326)
33		\$/MMBTU	1.55	-	1.55
34	March 2019	\$	824,832	-	824,832
35		MMBTU	766,613	-	766,613
36		\$/MMBTU	1.08	-	1.08
37	Total	\$	17,551,052	-	17,551,052
38		MMBTU	11,077,851	-	11,077,851
39		\$/MMBTU	1.58	-	1.58

Southwestern Public Service Company

Fossil Fuel Purchased

Class Plant Supplier	Gas Jones Westex				
Line No.	MONTH		(1) UNADJUSTED	(2) ADJUSTMENTS	(3) ADJUSTED
1	April 2018	\$	591,640	-	591,640
2		MMBTU	453,232	-	453,232
3		\$/MMBTU	1.31	-	1.31
4	May 2018	\$	1,454,080	-	1,454,080
5		MMBTU	819,397	-	819,397
6		\$/MMBTU	1.77	-	1.77
7	June 2018	\$	102,102	-	102,102
8		MMBTU	(37,408)	-	(37,408)
9		\$/MMBTU	(2.73)	-	(2.73)
10	July 2018	\$	529,864	-	529,864
11		MMBTU	234,689	-	234,689
12		\$/MMBTU	2.26	-	2.26
13	August 2018	\$	582,650	-	582,650
14		MMBTU	347,213	-	347,213
15		\$/MMBTU	1.68	-	1.68
16	September 2018	\$	257,128	-	257,128
17		MMBTU	244,961	-	244,961
18		\$/MMBTU	1.05	-	1.05
19	October 2018	\$	1,936,445	-	1,936,445
20		MMBTU	1,137,177	-	1,137,177
21		\$/MMBTU	1.70	-	1.70
22	November 2018	\$	1,241,810	-	1,241,810
23		MMBTU	716,245	-	716,245
24		\$/MMBTU	1.73	-	1.73
25	December 2018	\$	988,600	-	988,600
26		MMBTU	564,292	-	564,292
27		\$/MMBTU	1.75	-	1.75
28	January 2019	\$	658,946	-	658,946
29		MMBTU	318,050	-	318,050
30		\$/MMBTU	2.07	-	2.07
31	February 2019	\$	1,086,966	-	1,086,966
32		MMBTU	724,985	-	724,985
33		\$/MMBTU	1.50	-	1.50
34	March 2019	\$	667,608	-	667,608
35		MMBTU	683,992	-	683,992
36		\$/MMBTU	0.98	-	0.98
37	Total	\$	10,097,839		10,097,839
38		MMBTU	6,206,826		6,206,826
39		\$/MMBTU	1.63		1.63

Southwestern Public Service Company

Fossil Fuel Purchased

Class	Gas			
Plant	Jones - GT			
Supplier	Northern Natural Gas			
Line No.	MONTH	(1) UNADJUSTED	(2) ADJUSTMENTS	(3) ADJUSTED
1	April 2018	\$	-	-
2		MMBTU	-	-
3		\$/MMBTU	-	-
4	May 2018	\$	-	-
5		MMBTU	-	-
6		\$/MMBTU	-	-
7	June 2018	\$	-	-
8		MMBTU	-	-
9		\$/MMBTU	-	-
10	July 2018	\$	-	-
11		MMBTU	-	-
12		\$/MMBTU	-	-
13	August 2018	\$	-	-
14		MMBTU	-	-
15		\$/MMBTU	-	-
16	September 2018	\$	-	-
17		MMBTU	-	-
18		\$/MMBTU	-	-
19	October 2018	\$	-	-
20		MMBTU	-	-
21		\$/MMBTU	-	-
22	November 2018	\$	-	-
23		MMBTU	-	-
24		\$/MMBTU	-	-
25	December 2018	\$	-	-
26		MMBTU	-	-
27		\$/MMBTU	-	-
28	January 2019	\$	-	-
29		MMBTU	-	-
30		\$/MMBTU	-	-
31	February 2019	\$	-	-
32		MMBTU	-	-
33		\$/MMBTU	-	-
34	March 2019	\$	-	-
35		MMBTU	-	-
36		\$/MMBTU	-	-
37	Total	\$	-	-
38		MMBTU	-	-
39		\$/MMBTU	-	-

Southwestern Public Service Company

Fossil Fuel Purchased

Class Plant Supplier	Gas Jones - GT Westex				
Line No.	MONTH		(1) UNADJUSTED	(2) ADJUSTMENTS	(3) ADJUSTED
1	April 2018	\$	(36,727)	-	(36,727)
2		MMBTU	(14,345)	-	(14,345)
3		\$/MMBTU	2.56	-	2.56
4	May 2018	\$	942,943	-	942,943
5		MMBTU	539,763	-	539,763
6		\$/MMBTU	1.75	-	1.75
7	June 2018	\$	3,884,450	-	3,884,450
8		MMBTU	2,108,794	-	2,108,794
9		\$/MMBTU	1.84	-	1.84
10	July 2018	\$	5,369,218	-	5,369,218
11		MMBTU	2,579,856	-	2,579,856
12		\$/MMBTU	2.08	-	2.08
13	August 2018	\$	2,516,136	-	2,516,136
14		MMBTU	1,048,092	-	1,048,092
15		\$/MMBTU	2.40	-	2.40
16	September 2018	\$	1,655,995	-	1,655,995
17		MMBTU	935,138	-	935,138
18		\$/MMBTU	1.77	-	1.77
19	October 2018	\$	829,165	-	829,165
20		MMBTU	477,028	-	477,028
21		\$/MMBTU	1.74	-	1.74
22	November 2018	\$	279,088	-	279,088
23		MMBTU	153,037	-	153,037
24		\$/MMBTU	1.82	-	1.82
25	December 2018	\$	193,529	-	193,529
26		MMBTU	106,466	-	106,466
27		\$/MMBTU	1.82	-	1.82
28	January 2019	\$	136,999	-	136,999
29		MMBTU	65,969	-	65,969
30		\$/MMBTU	2.08	-	2.08
31	February 2019	\$	570,526	-	570,526
32		MMBTU	383,110	-	383,110
33		\$/MMBTU	1.49	-	1.49
34	March 2019	\$	389,314	-	389,314
35		MMBTU	429,768	-	429,768
36		\$/MMBTU	0.91	-	0.91
37	Total	\$	16,730,636	-	16,730,636
38		MMBTU	8,812,675	-	8,812,675
39		\$/MMBTU	1.90	-	1.90

Southwestern Public Service Company

Fossil Fuel Purchased

Class	Gas			
Plant	Maddox - GT			
Supplier	El Paso Natural Gas			
Line No.	MONTH	(1) UNADJUSTED	(2) ADJUSTMENTS	(3) ADJUSTED
1	April 2018	\$	-	-
2		MMBTU	-	-
3		\$/MMBTU	-	-
4	May 2018	\$	-	-
5		MMBTU	-	-
6		\$/MMBTU	-	-
7	June 2018	\$	-	-
8		MMBTU	-	-
9		\$/MMBTU	-	-
10	July 2018	\$	-	-
11		MMBTU	-	-
12		\$/MMBTU	-	-
13	August 2018	\$	-	-
14		MMBTU	-	-
15		\$/MMBTU	-	-
16	September 2018	\$	-	-
17		MMBTU	-	-
18		\$/MMBTU	-	-
19	October 2018	\$	-	-
20		MMBTU	-	-
21		\$/MMBTU	-	-
22	November 2018	\$	-	-
23		MMBTU	-	-
24		\$/MMBTU	-	-
25	December 2018	\$	-	-
26		MMBTU	-	-
27		\$/MMBTU	-	-
28	January 2019	\$	-	-
29		MMBTU	-	-
30		\$/MMBTU	-	-
31	February 2019	\$	-	-
32		MMBTU	-	-
33		\$/MMBTU	-	-
34	March 2019	\$	-	-
35		MMBTU	-	-
36		\$/MMBTU	-	-
37	Total	\$	-	-
38		MMBTU	-	-
39		\$/MMBTU	-	-

Southwestern Public Service Company

Fossil Fuel Purchased

Class	Gas				
Plant	Maddox - GT				
Supplier	Northern Natural Gas				
Line No.	MONTH		(1) UNADJUSTED	(2) ADJUSTMENTS	(3) ADJUSTED
1	April 2018	\$	415,379	-	415,379
2		MMBTU	250,098	-	250,098
3		\$/MMBTU	1.66	-	1.66
4	May 2018	\$	813,860	-	813,860
5		MMBTU	521,174	-	521,174
6		\$/MMBTU	1.56	-	1.56
7	June 2018	\$	383,805	-	383,805
8		MMBTU	155,706	-	155,706
9		\$/MMBTU	2.46	-	2.46
10	July 2018	\$	381,104	-	381,104
11		MMBTU	186,877	-	186,877
12		\$/MMBTU	2.04	-	2.04
13	August 2018	\$	376,785	-	376,785
14		MMBTU	185,172	-	185,172
15		\$/MMBTU	2.03	-	2.03
16	September 2018	\$	305,730	-	305,730
17		MMBTU	204,335	-	204,335
18		\$/MMBTU	1.50	-	1.50
19	October 2018	\$	808,588	-	808,588
20		MMBTU	498,011	-	498,011
21		\$/MMBTU	1.62	-	1.62
22	November 2018	\$	443,327	-	443,327
23		MMBTU	234,284	-	234,284
24		\$/MMBTU	1.89	-	1.89
25	December 2018	\$	281,114	-	281,114
26		MMBTU	200,170	-	200,170
27		\$/MMBTU	1.40	-	1.40
28	January 2019	\$	386,907	-	386,907
29		MMBTU	182,267	-	182,267
30		\$/MMBTU	2.12	-	2.12
31	February 2019	\$	312,433	-	312,433
32		MMBTU	183,719	-	183,719
33		\$/MMBTU	1.70	-	1.70
34	March 2019	\$	288,852	-	288,852
35		MMBTU	259,906	-	259,906
36		\$/MMBTU	1.11	-	1.11
37	Total	\$	5,197,884	-	5,197,884
38		MMBTU	3,061,719	-	3,061,719
39		\$/MMBTU	1.70	-	1.70

Southwestern Public Service Company

Fossil Fuel Purchased

Class	Gas			
Plant	Maddox - ST			
Supplier	El Paso Natural Gas			
Line No.	MONTH	(1) UNADJUSTED	(2) ADJUSTMENTS	(3) ADJUSTED
1	April 2018	\$	-	-
2		MMBTU	-	-
3		\$/MMBTU	-	-
4	May 2018	\$	-	-
5		MMBTU	-	-
6		\$/MMBTU	-	-
7	June 2018	\$	-	-
8		MMBTU	-	-
9		\$/MMBTU	-	-
10	July 2018	\$	-	-
11		MMBTU	-	-
12		\$/MMBTU	-	-
13	August 2018	\$	-	-
14		MMBTU	-	-
15		\$/MMBTU	-	-
16	September 2018	\$	-	-
17		MMBTU	-	-
18		\$/MMBTU	-	-
19	October 2018	\$	-	-
20		MMBTU	-	-
21		\$/MMBTU	-	-
22	November 2018	\$	-	-
23		MMBTU	-	-
24		\$/MMBTU	-	-
25	December 2018	\$	-	-
26		MMBTU	-	-
27		\$/MMBTU	-	-
28	January 2019	\$	-	-
29		MMBTU	-	-
30		\$/MMBTU	-	-
31	February 2019	\$	-	-
32		MMBTU	-	-
33		\$/MMBTU	-	-
34	March 2019	\$	-	-
35		MMBTU	-	-
36		\$/MMBTU	-	-
37	Total	\$	-	-
38		MMBTU	-	-
39		\$/MMBTU	-	-

Southwestern Public Service Company

Fossil Fuel Purchased

Line No.	MONTH		(1)	(2)	(3)
			UNADJUSTED	ADJUSTMENTS	ADJUSTED
1	April 2018	\$	704,496	-	704,496
2		MMBTU	447,695	-	447,695
3		\$/MMBTU	1.57	-	1.57
4	May 2018	\$	998,081	-	998,081
5		MMBTU	636,720	-	636,720
6		\$/MMBTU	1.57	-	1.57
7	June 2018	\$	1,056,102	-	1,056,102
8		MMBTU	470,217	-	470,217
9		\$/MMBTU	2.25	-	2.25
10	July 2018	\$	851,221	-	851,221
11		MMBTU	417,776	-	417,776
12		\$/MMBTU	2.04	-	2.04
13	August 2018	\$	1,220,478	-	1,220,478
14		MMBTU	597,179	-	597,179
15		\$/MMBTU	2.04	-	2.04
16	September 2018	\$	477,168	-	477,168
17		MMBTU	324,565	-	324,565
18		\$/MMBTU	1.47	-	1.47
19	October 2018	\$	(30,306)	-	(30,306)
20		MMBTU	(47,201)	-	(47,201)
21		\$/MMBTU	0.64	-	0.64
22	November 2018	\$	(110)	-	(110)
23		MMBTU	11	-	11
24		\$/MMBTU	(10.30)	-	(10.30)
25	December 2018	\$	288,829	-	288,829
26		MMBTU	196,159	-	196,159
27		\$/MMBTU	1.47	-	1.47
28	January 2019	\$	972,412	-	972,412
29		MMBTU	460,176	-	460,176
30		\$/MMBTU	2.11	-	2.11
31	February 2019	\$	852,613	-	852,613
32		MMBTU	503,056	-	503,056
33		\$/MMBTU	1.69	-	1.69
34	March 2019	\$	720,859	-	720,859
35		MMBTU	648,577	-	648,577
36		\$/MMBTU	1.11	-	1.11
37	Total	\$	8,111,842	-	8,111,842
38		MMBTU	4,654,930	-	4,654,930
39		\$/MMBTU	1.74	-	1.74

Southwestern Public Service Company

Fossil Fuel Purchased

Class	Gas			
Plant	Moore County			
Supplier	Northern Natural Gas			
Line No.	MONTH	(1) UNADJUSTED	(2) ADJUSTMENTS	(3) ADJUSTED
1	April 2018	\$	-	-
2		MMBTU	-	-
3		\$/MMBTU	-	-
4	May 2018	\$	-	-
5		MMBTU	-	-
6		\$/MMBTU	-	-
7	June 2018	\$	-	-
8		MMBTU	-	-
9		\$/MMBTU	-	-
10	July 2018	\$	-	-
11		MMBTU	-	-
12		\$/MMBTU	-	-
13	August 2018	\$	-	-
14		MMBTU	-	-
15		\$/MMBTU	-	-
16	September 2018	\$	-	-
17		MMBTU	-	-
18		\$/MMBTU	-	-
19	October 2018	\$	-	-
20		MMBTU	-	-
21		\$/MMBTU	-	-
22	November 2018	\$	-	-
23		MMBTU	-	-
24		\$/MMBTU	-	-
25	December 2018	\$	-	-
26		MMBTU	-	-
27		\$/MMBTU	-	-
28	January 2019	\$	-	-
29		MMBTU	-	-
30		\$/MMBTU	-	-
31	February 2019	\$	-	-
32		MMBTU	-	-
33		\$/MMBTU	-	-
34	March 2019	\$	-	-
35		MMBTU	-	-
36		\$/MMBTU	-	-
37	Total	\$	-	-
38		MMBTU	-	-
39		\$/MMBTU	-	-

Southwestern Public Service Company

Fossil Fuel Purchased

Class Plant Supplier	Gas Moore County Westex				
Line No.	MONTH		(1) UNADJUSTED	(2) ADJUSTMENTS	(3) ADJUSTED
1	April 2018	\$	-	-	-
2		MMBTU	-	-	-
3		\$/MMBTU	-	-	-
4	May 2018	\$	-	-	-
5		MMBTU	-	-	-
6		\$/MMBTU	-	-	-
7	June 2018	\$	-	-	-
8		MMBTU	-	-	-
9		\$/MMBTU	-	-	-
10	July 2018	\$	-	-	-
11		MMBTU	-	-	-
12		\$/MMBTU	-	-	-
13	August 2018	\$	-	-	-
14		MMBTU	-	-	-
15		\$/MMBTU	-	-	-
16	September 2018	\$	-	-	-
17		MMBTU	-	-	-
18		\$/MMBTU	-	-	-
19	October 2018	\$	-	-	-
20		MMBTU	-	-	-
21		\$/MMBTU	-	-	-
22	November 2018	\$	-	-	-
23		MMBTU	-	-	-
24		\$/MMBTU	-	-	-
25	December 2018	\$	-	-	-
26		MMBTU	-	-	-
27		\$/MMBTU	-	-	-
28	January 2019	\$	-	-	-
29		MMBTU	-	-	-
30		\$/MMBTU	-	-	-
31	February 2019	\$	-	-	-
32		MMBTU	-	-	-
33		\$/MMBTU	-	-	-
34	March 2019	\$	-	-	-
35		MMBTU	-	-	-
36		\$/MMBTU	-	-	-
37	Total	\$	-	-	-
38		MMBTU	-	-	-
39		\$/MMBTU	-	-	-

Southwestern Public Service Company

Fossil Fuel Purchased

Class	Gas				
Plant	Nichols				
Supplier	Colorado Interstate Gas Company				
Line No.	MONTH		(1) UNADJUSTED	(2) ADJUSTMENTS	(3) ADJUSTED
1	April 2018	\$	306,383	-	306,383
2		MMBTU	136,750	-	136,750
3		\$/MMBTU	2.24	-	2.24
4	May 2018	\$	483,371	-	483,371
5		MMBTU	225,957	-	225,957
6		\$/MMBTU	2.14	-	2.14
7	June 2018	\$	413,126	-	413,126
8		MMBTU	187,654	-	187,654
9		\$/MMBTU	2.20	-	2.20
10	July 2018	\$	689,723	-	689,723
11		MMBTU	293,453	-	293,453
12		\$/MMBTU	2.35	-	2.35
13	August 2018	\$	412,417	-	412,417
14		MMBTU	176,355	-	176,355
15		\$/MMBTU	2.34	-	2.34
16	September 2018	\$	357,009	-	357,009
17		MMBTU	151,641	-	151,641
18		\$/MMBTU	2.35	-	2.35
19	October 2018	\$	(14,686)	-	(14,686)
20		MMBTU	(6,058)	-	(6,058)
21		\$/MMBTU	2.42	-	2.42
22	November 2018	\$	-	-	-
23		MMBTU	-	-	-
24		\$/MMBTU	-	-	-
25	December 2018	\$	-	-	-
26		MMBTU	-	-	-
27		\$/MMBTU	-	-	-
28	January 2019	\$	-	-	-
29		MMBTU	-	-	-
30		\$/MMBTU	-	-	-
31	February 2019	\$	-	-	-
32		MMBTU	-	-	-
33		\$/MMBTU	-	-	-
34	March 2019	\$	-	-	-
35		MMBTU	-	-	-
36		\$/MMBTU	-	-	-
37	Total	\$	2,647,342	-	2,647,342
38		MMBTU	1,165,752	-	1,165,752
39		\$/MMBTU	2.27	-	2.27

Southwestern Public Service Company

Fossil Fuel Purchased

Class	Gas			
Plant	Nichols			
Supplier	El Paso Natural Gas			
Line No.	MONTH	(1) UNADJUSTED	(2) ADJUSTMENTS	(3) ADJUSTED
1	April 2018	\$ -	-	-
2		MMBTU -	-	-
3		\$/MMBTU -	-	-
4	May 2018	\$ -	-	-
5		MMBTU -	-	-
6		\$/MMBTU -	-	-
7	June 2018	\$ -	-	-
8		MMBTU -	-	-
9		\$/MMBTU -	-	-
10	July 2018	\$ -	-	-
11		MMBTU -	-	-
12		\$/MMBTU -	-	-
13	August 2018	\$ -	-	-
14		MMBTU -	-	-
15		\$/MMBTU -	-	-
16	September 2018	\$ -	-	-
17		MMBTU -	-	-
18		\$/MMBTU -	-	-
19	October 2018	\$ 876,740	-	876,740
20		MMBTU 359,141	-	359,141
21		\$/MMBTU 2.44	-	2.44
22	November 2018	\$ 555,566	-	555,566
23		MMBTU 130,324	-	130,324
24		\$/MMBTU 4.26	-	4.26
25	December 2018	\$ 576,482	-	576,482
26		MMBTU 162,105	-	162,105
27		\$/MMBTU 3.56	-	3.56
28	January 2019	\$ 349,866	-	349,866
29		MMBTU 151,851	-	151,851
30		\$/MMBTU 2.30	-	2.30
31	February 2019	\$ 193,335	-	193,335
32		MMBTU 121,888	-	121,888
33		\$/MMBTU 1.59	-	1.59
34	March 2019	\$ 272,487	-	272,487
35		MMBTU 275,658	-	275,658
36		\$/MMBTU 0.99	-	0.99
37	Total	\$ 2,824,476	-	2,824,476
38		MMBTU 1,200,967	-	1,200,967
39		\$/MMBTU 2.35	-	2.35

Southwestern Public Service Company

Fossil Fuel Purchased

Class Plant Supplier	Gas Nichols Westex		(1) UNADJUSTED	(2) ADJUSTMENTS	(3) ADJUSTED
Line No.	MONTH				
1	April 2018	\$	542,902	-	542,902
2		MMBTU	406,914	-	406,914
3		\$/MMBTU	1.33	-	1.33
4	May 2018	\$	1,090,541	-	1,090,541
5		MMBTU	601,731	-	601,731
6		\$/MMBTU	1.81	-	1.81
7	June 2018	\$	1,572,121	-	1,572,121
8		MMBTU	664,950	-	664,950
9		\$/MMBTU	2.36	-	2.36
10	July 2018	\$	2,578,006	-	2,578,006
11		MMBTU	1,203,856	-	1,203,856
12		\$/MMBTU	2.14	-	2.14
13	August 2018	\$	1,924,135	-	1,924,135
14		MMBTU	870,176	-	870,176
15		\$/MMBTU	2.21	-	2.21
16	September 2018	\$	1,455,780	-	1,455,780
17		MMBTU	765,538	-	765,538
18		\$/MMBTU	1.90	-	1.90
19	October 2018	\$	2,724,834	-	2,724,834
20		MMBTU	1,458,186	-	1,458,186
21		\$/MMBTU	1.87	-	1.87
22	November 2018	\$	875,495	-	875,495
23		MMBTU	334,466	-	334,466
24		\$/MMBTU	2.62	-	2.62
25	December 2018	\$	1,393,856	-	1,393,856
26		MMBTU	768,804	-	768,804
27		\$/MMBTU	1.81	-	1.81
28	January 2019	\$	704,420	-	704,420
29		MMBTU	297,033	-	297,033
30		\$/MMBTU	2.37	-	2.37
31	February 2019	\$	748,125	-	748,125
32		MMBTU	481,249	-	481,249
33		\$/MMBTU	1.55	-	1.55
34	March 2019	\$	1,121,550	-	1,121,550
35		MMBTU	955,345	-	955,345
36		\$/MMBTU	1.17	-	1.17
37	Total	\$	16,731,765	-	16,731,765
38		MMBTU	8,808,248	-	8,808,248
39		\$/MMBTU	1.90	-	1.90

Southwestern Public Service Company

Fossil Fuel Purchased

Line No.	Class Plant Supplier	MONTH			
	Gas Plant X El Paso Natural Gas		(1) UNADJUSTED	(2) ADJUSTMENTS	(3) ADJUSTED
1		April 2018	\$ 681,634	-	681,634
2			MMBTU 449,118	-	449,118
3			\$/MMBTU 1.52	-	1.52
4		May 2018	\$ 1,586,428	-	1,586,428
5			MMBTU 811,244	-	811,244
6			\$/MMBTU 1.96	-	1.96
7		June 2018	\$ 764,652	-	764,652
8			MMBTU 495,430	-	495,430
9			\$/MMBTU 1.54	-	1.54
10		July 2018	\$ 1,649,504	-	1,649,504
11			MMBTU 841,749	-	841,749
12			\$/MMBTU 1.96	-	1.96
13		August 2018	\$ 1,019,068	-	1,019,068
14			MMBTU 565,590	-	565,590
15			\$/MMBTU 1.80	-	1.80
16		September 2018	\$ 1,036,726	-	1,036,726
17			MMBTU 722,889	-	722,889
18			\$/MMBTU 1.43	-	1.43
19		October 2018	\$ 1,051,689	-	1,051,689
20			MMBTU 497,431	-	497,431
21			\$/MMBTU 2.11	-	2.11
22		November 2018	\$ 1,814,104	-	1,814,104
23			MMBTU 979,071	-	979,071
24			\$/MMBTU 1.85	-	1.85
25		December 2018	\$ (146,928)	-	(146,928)
26			MMBTU (226,522)	-	(226,522)
27			\$/MMBTU 0.65	-	0.65
28		January 2019	\$ 510,057	-	510,057
29			MMBTU 249,008	-	249,008
30			\$/MMBTU 2.05	-	2.05
31		February 2019	\$ 85,917	-	85,917
32			MMBTU 68,694	-	68,694
33			\$/MMBTU 1.25	-	1.25
34		March 2019	\$ 525,213	-	525,213
35			MMBTU 580,507	-	580,507
36			\$/MMBTU 0.90	-	0.90
37		Total	\$ 10,578,063	-	10,578,063
38			MMBTU 6,034,209	-	6,034,209
39			\$/MMBTU 1.75	-	1.75

Southwestern Public Service Company

Fossil Fuel Purchased

Class	Gas			
Plant	Plant X			
Supplier	Northern Natural Gas			
Line No.	MONTH	(1) UNADJUSTED	(2) ADJUSTMENTS	(3) ADJUSTED
1	April 2018	\$	-	-
2		MMBTU	-	-
3		\$/MMBTU	-	-
4	May 2018	\$	-	-
5		MMBTU	0	0
6		\$/MMBTU	-	-
7	June 2018	\$	-	-
8		MMBTU	0	0
9		\$/MMBTU	-	-
10	July 2018	\$	-	-
11		MMBTU	(0)	(0)
12		\$/MMBTU	-	-
13	August 2018	\$	-	-
14		MMBTU	-	-
15		\$/MMBTU	-	-
16	September 2018	\$	-	-
17		MMBTU	-	-
18		\$/MMBTU	-	-
19	October 2018	\$	-	-
20		MMBTU	-	-
21		\$/MMBTU	-	-
22	November 2018	\$	-	-
23		MMBTU	-	-
24		\$/MMBTU	-	-
25	December 2018	\$	-	-
26		MMBTU	-	-
27		\$/MMBTU	-	-
28	January 2019	\$	-	-
29		MMBTU	-	-
30		\$/MMBTU	-	-
31	February 2019	\$	-	-
32		MMBTU	-	-
33		\$/MMBTU	-	-
34	March 2019	\$	-	-
35		MMBTU	-	-
36		\$/MMBTU	-	-
37	Total	\$	-	-
38		MMBTU	-	-
39		\$/MMBTU	-	-

Southwestern Public Service Company

Fossil Fuel Purchased

Class Plant Supplier	Gas Plant X Westex				
Line No.	MONTH		(1) UNADJUSTED	(2) ADJUSTMENTS	(3) ADJUSTED
1	April 2018	\$	734,343	-	734,343
2		MMBTU	577,271	-	577,271
3		\$/MMBTU	1.27	-	1.27
4	May 2018	\$	1,508,988	-	1,508,988
5		MMBTU	831,011	-	831,011
6		\$/MMBTU	1.82	-	1.82
7	June 2018	\$	1,050,237	-	1,050,237
8		MMBTU	554,066	-	554,066
9		\$/MMBTU	1.90	-	1.90
10	July 2018	\$	2,074,810	-	2,074,810
11		MMBTU	994,290	-	994,290
12		\$/MMBTU	2.09	-	2.09
13	August 2018	\$	1,535,534	-	1,535,534
14		MMBTU	676,028	-	676,028
15		\$/MMBTU	2.27	-	2.27
16	September 2018	\$	491,990	-	491,990
17		MMBTU	291,620	-	291,620
18		\$/MMBTU	1.69	-	1.69
19	October 2018	\$	1,828,211	-	1,828,211
20		MMBTU	1,104,225	-	1,104,225
21		\$/MMBTU	1.66	-	1.66
22	November 2018	\$	1,495,505	-	1,495,505
23		MMBTU	893,186	-	893,186
24		\$/MMBTU	1.67	-	1.67
25	December 2018	\$	1,088,538	-	1,088,538
26		MMBTU	566,424	-	566,424
27		\$/MMBTU	1.92	-	1.92
28	January 2019	\$	1,680,388	-	1,680,388
29		MMBTU	805,823	-	805,823
30		\$/MMBTU	2.09	-	2.09
31	February 2019	\$	754,685	-	754,685
32		MMBTU	489,066	-	489,066
33		\$/MMBTU	1.54	-	1.54
34	March 2019	\$	715,484	-	715,484
35		MMBTU	734,785	-	734,785
36		\$/MMBTU	0.97	-	0.97
37	Total	\$	14,958,714	-	14,958,714
38		MMBTU	8,517,795	-	8,517,795
39		\$/MMBTU	1.76	-	1.76

Southwestern Public Service Company

Fossil Fuel Purchased

Class Plant Supplier	Gas Riverview Raptor		(1) UNADJUSTED	(2) ADJUSTMENTS	(3) ADJUSTED
Line No.	MONTH				
1	April 2018	\$	-	-	-
2		MMBTU	-	-	-
3		\$/MMBTU	-	-	-
4	May 2018	\$	-	-	-
5		MMBTU	-	-	-
6		\$/MMBTU	-	-	-
7	June 2018	\$	-	-	-
8		MMBTU	-	-	-
9		\$/MMBTU	-	-	-
10	July 2018	\$	-	-	-
11		MMBTU	-	-	-
12		\$/MMBTU	-	-	-
13	August 2018	\$	-	-	-
14		MMBTU	-	-	-
15		\$/MMBTU	-	-	-
16	September 2018	\$	-	-	-
17		MMBTU	-	-	-
18		\$/MMBTU	-	-	-
19	October 2018	\$	-	-	-
20		MMBTU	-	-	-
21		\$/MMBTU	-	-	-
22	November 2018	\$	-	-	-
23		MMBTU	-	-	-
24		\$/MMBTU	-	-	-
25	December 2018	\$	-	-	-
26		MMBTU	-	-	-
27		\$/MMBTU	-	-	-
28	January 2019	\$	-	-	-
29		MMBTU	-	-	-
30		\$/MMBTU	-	-	-
31	February 2019	\$	-	-	-
32		MMBTU	-	-	-
33		\$/MMBTU	-	-	-
34	March 2019	\$	-	-	-
35		MMBTU	-	-	-
36		\$/MMBTU	-	-	-
37	Total	\$	-	-	-
38		MMBTU	-	-	-
39		\$/MMBTU	-	-	-

Southwestern Public Service Company

Fossil Fuel Purchased

Class	Gas			
Plant	Tolk			
Supplier	Northern Natural Gas			
Line No.	MONTH	(1) UNADJUSTED	(2) ADJUSTMENTS	(3) ADJUSTED
1	April 2018	\$	-	-
2		MMBTU	-	-
3		\$/MMBTU	-	-
4	May 2018	\$	-	-
5		MMBTU	-	-
6		\$/MMBTU	-	-
7	June 2018	\$	-	-
8		MMBTU	-	-
9		\$/MMBTU	-	-
10	July 2018	\$	-	-
11		MMBTU	-	-
12		\$/MMBTU	-	-
13	August 2018	\$	-	-
14		MMBTU	-	-
15		\$/MMBTU	-	-
16	September 2018	\$	-	-
17		MMBTU	-	-
18		\$/MMBTU	-	-
19	October 2018	\$	-	-
20		MMBTU	-	-
21		\$/MMBTU	-	-
22	November 2018	\$	-	-
23		MMBTU	-	-
24		\$/MMBTU	-	-
25	December 2018	\$	-	-
26		MMBTU	-	-
27		\$/MMBTU	-	-
28	January 2019	\$	-	-
29		MMBTU	-	-
30		\$/MMBTU	-	-
31	February 2019	\$	-	-
32		MMBTU	-	-
33		\$/MMBTU	-	-
34	March 2019	\$	-	-
35		MMBTU	-	-
36		\$/MMBTU	-	-
37	Total	\$	-	-
38		MMBTU	-	-
39		\$/MMBTU	-	-

Southwestern Public Service Company

Fossil Fuel Purchased

Class Plant Supplier	Gas Tolk Westex		(1) UNADJUSTED	(2) ADJUSTMENTS	(3) ADJUSTED
Line No.	MONTH				
1	April 2018	\$	90,265	-	90,265
2		MMBTU	52,719	-	52,719
3		\$/MMBTU	1.71	-	1.71
4	May 2018	\$	38,395	-	38,395
5		MMBTU	20,829	-	20,829
6		\$/MMBTU	1.84	-	1.84
7	June 2018	\$	19,244	-	19,244
8		MMBTU	10,311	-	10,311
9		\$/MMBTU	1.87	-	1.87
10	July 2018	\$	887	-	887
11		MMBTU	90	-	90
12		\$/MMBTU	9.89	-	9.89
13	August 2018	\$	112	-	112
14		MMBTU	(31)	-	(31)
15		\$/MMBTU	(3.61)	-	(3.61)
16	September 2018	\$	5,181	-	5,181
17		MMBTU	3,210	-	3,210
18		\$/MMBTU	1.61	-	1.61
19	October 2018	\$	10,190	-	10,190
20		MMBTU	5,944	-	5,944
21		\$/MMBTU	1.71	-	1.71
22	November 2018	\$	1,030	-	1,030
23		MMBTU	322	-	322
24		\$/MMBTU	3.20	-	3.20
25	December 2018	\$	92,957	-	92,957
26		MMBTU	54,178	-	54,178
27		\$/MMBTU	1.72	-	1.72
28	January 2019	\$	26,338	-	26,338
29		MMBTU	12,820	-	12,820
30		\$/MMBTU	2.05	-	2.05
31	February 2019	\$	15,813	-	15,813
32		MMBTU	10,631	-	10,631
33		\$/MMBTU	1.49	-	1.49
34	March 2019	\$	20,500	-	20,500
35		MMBTU	21,606	-	21,606
36		\$/MMBTU	0.95	-	0.95
37	Total	\$	320,911	-	320,911
38		MMBTU	192,629	-	192,629
39		\$/MMBTU	1.67	-	1.67

Southwestern Public Service Company

Fossil Fuel Purchased

Class Plant Supplier	Oil Quay County Various				
Line No.	MONTH		(1) UNADJUSTED	(2) ADJUSTMENTS	(3) ADJUSTED
1	April 2018	\$	-	-	-
2		MMBTU	-	-	-
3		\$/MMBTU	-	-	-
4	May 2018	\$	-	-	-
5		MMBTU	-	-	-
6		\$/MMBTU	-	-	-
7	June 2018	\$	-	-	-
8		MMBTU	-	-	-
9		\$/MMBTU	-	-	-
10	July 2018	\$	-	-	-
11		MMBTU	-	-	-
12		\$/MMBTU	-	-	-
13	August 2018	\$	-	-	-
14		MMBTU	-	-	-
15		\$/MMBTU	-	-	-
16	September 2018	\$	-	-	-
17		MMBTU	-	-	-
18		\$/MMBTU	-	-	-
19	October 2018	\$	-	-	-
20		MMBTU	-	-	-
21		\$/MMBTU	-	-	-
22	November 2018	\$	-	-	-
23		MMBTU	-	-	-
24		\$/MMBTU	-	-	-
25	December 2018	\$	-	-	-
26		MMBTU	-	-	-
27		\$/MMBTU	-	-	-
28	January 2019	\$	-	-	-
29		MMBTU	-	-	-
30		\$/MMBTU	-	-	-
31	February 2019	\$	-	-	-
32		MMBTU	-	-	-
33		\$/MMBTU	-	-	-
34	March 2019	\$	-	-	-
35		MMBTU	-	-	-
36		\$/MMBTU	-	-	-
37	Total	\$	-	-	-
38		MMBTU	-	-	-
39		\$/MMBTU	-	-	-

Southwestern Public Service Company

Fossil Fuel Purchased

Class Plant Supplier	Oil Jones Various				
Line No.	MONTH		(1) UNADJUSTED	(2) ADJUSTMENTS	(3) ADJUSTED
1	April 2018	\$	-	-	-
2		MMBTU	-	-	-
3		\$/MMBTU	-	-	-
4	May 2018	\$	-	-	-
5		MMBTU	-	-	-
6		\$/MMBTU	-	-	-
7	June 2018	\$	-	-	-
8		MMBTU	-	-	-
9		\$/MMBTU	-	-	-
10	July 2018	\$	-	-	-
11		MMBTU	-	-	-
12		\$/MMBTU	-	-	-
13	August 2018	\$	-	-	-
14		MMBTU	-	-	-
15		\$/MMBTU	-	-	-
16	September 2018	\$	-	-	-
17		MMBTU	-	-	-
18		\$/MMBTU	-	-	-
19	October 2018	\$	-	-	-
20		MMBTU	-	-	-
21		\$/MMBTU	-	-	-
22	November 2018	\$	-	-	-
23		MMBTU	-	-	-
24		\$/MMBTU	-	-	-
25	December 2018	\$	-	-	-
26		MMBTU	-	-	-
27		\$/MMBTU	-	-	-
28	January 2019	\$	-	-	-
29		MMBTU	-	-	-
30		\$/MMBTU	-	-	-
31	February 2019	\$	-	-	-
32		MMBTU	-	-	-
33		\$/MMBTU	-	-	-
34	March 2019	\$	-	-	-
35		MMBTU	-	-	-
36		\$/MMBTU	-	-	-
37	Total	\$	-	-	-
38		MMBTU	-	-	-
39		\$/MMBTU	-	-	-

Southwestern Public Service Company

Fossil Fuel Purchased

Class Plant Supplier	Oil Plant X Various				
Line No.	MONTH		(1) UNADJUSTED	(2) ADJUSTMENTS	(3) ADJUSTED
1	April 2018	\$	-	-	-
2		MMBTU	-	-	-
3		\$/MMBTU	-	-	-
4	May 2018	\$	-	-	-
5		MMBTU	-	-	-
6		\$/MMBTU	-	-	-
7	June 2018	\$	-	-	-
8		MMBTU	-	-	-
9		\$/MMBTU	-	-	-
10	July 2018	\$	-	-	-
11		MMBTU	-	-	-
12		\$/MMBTU	-	-	-
13	August 2018	\$	-	-	-
14		MMBTU	-	-	-
15		\$/MMBTU	-	-	-
16	September 2018	\$	-	-	-
17		MMBTU	-	-	-
18		\$/MMBTU	-	-	-
19	October 2018	\$	-	-	-
20		MMBTU	-	-	-
21		\$/MMBTU	-	-	-
22	November 2018	\$	-	-	-
23		MMBTU	-	-	-
24		\$/MMBTU	-	-	-
25	December 2018	\$	-	-	-
26		MMBTU	-	-	-
27		\$/MMBTU	-	-	-
28	January 2019	\$	-	-	-
29		MMBTU	-	-	-
30		\$/MMBTU	-	-	-
31	February 2019	\$	-	-	-
32		MMBTU	-	-	-
33		\$/MMBTU	-	-	-
34	March 2019	\$	-	-	-
35		MMBTU	-	-	-
36		\$/MMBTU	-	-	-
37	Total	\$	-	-	-
38		MMBTU	-	-	-
39		\$/MMBTU	-	-	-

Note: As discussed in the testimony of William A. Grant, Southwestern Public Service Company ("SPS") has not filed a fuel reconciliation with its current base rate case in accordance with the Order in Project No. 41905 and 16 Tex. Admin. Code ("TAC") § 25.236 as revised in that project. Therefore, fuel reconciliation data is not applicable. Additionally, SPS is not proposing a new fuel factor under 16 TAC § 25.237. Therefore, rate year data is not applicable.

Southwestern Public Service Company

Nonrecurring Fuel and Purchase Power Expenses

Southwestern Public Service Company (“SPS”) has not filed a fuel reconciliation with its current base rate case in accordance with the Order in Project No. 41905 and 16 Tex. Admin. Code § 25.236 as revised in that project. However, SPS has included this schedule in the filing package because it remains applicable to information presented in SPS’s base rate case.

SPS had no nonrecurring base rate fuel and purchased power expenses during the Test Year (April 1, 2018 – March 31, 2019) or the Updated Test Year (July 1, 2018 through June 30, 2019).

Southwestern Public Service Company

Fuel and Purchase Power Procurement Practices

As discussed in the testimony of Southwestern Public Service Company (“SPS”) witness William A. Grant, SPS has not filed a fuel reconciliation with its current base rate case in accordance with the Order in Project No. 41905 and 16 Tex. Admin. Code § 25.236 as revised in that project. However, SPS has included this schedule in the filing package because it remains applicable to information presented in SPS’s base rate case.

To ensure that SPS meets its overall goal of purchasing power and energy to provide its customers with the lowest reasonable cost of available power considering power supply reliability and flexibility, predicted market conditions, and electrical constraints, SPS utilizes the following practices:

- Maximizing the competition between fuel suppliers;
- Purchasing fuel requirements under a portfolio approach;
- Maximizing fuel supply reliability and flexibility;
- Actively promoting beneficial changes in the fuel supply and fuel related industries through legislative, judicial and regulatory avenues;
- Having an informed base of knowledge concerning fuel supply, demand, pricing and other related issues affecting SPS and its customers; and
- Regular evaluation of fuel quantity and quality needs versus projected demand through fuel planning and feedback from operational personnel.

Procurement practices specific to various fuel types and purchased power are discussed below. The procurement practices that result in costs recovered through SPS’s base rates are those for non-renewable long-term (a term of one year or longer) purchased power agreements (“PPAs”) and coal.

Natural Gas

SPS purchases natural gas for both long and short-term needs using a variety of methods including a Request for Proposal (“RFP”) process, daily phone and instant messaging polling of suppliers, e-mail solicitation and Internet based on-line trading platforms.

Long Term Procurement Practices

Long-term gas or base supplies are defined as supplies that are contracted for a period of longer than one month. All long-term supplies are obtained using an RFP solicitation process as described below.

Detailed RFP packages are prepared and sent to potential suppliers via e-mail on several different occasions during each year. RFP packages are typically sent to thirty to forty different suppliers with a response rate varying from as low as nine to as high as twenty. The response rate depends on what time frame is being bid on and the supply areas being requested during that time frame.

Upon receipt of the bids, a quantitative analysis is made of each proposal in relation to other bids to arrive at a short list of suppliers that would provide the lowest aggregate cost of gas. Once the best potential suppliers are identified, SPS uses the bids as the basis for negotiating the final agreements with the selected suppliers.

Short-Term Procurement Practices

Short-term procurement practices are used for supply needs of one month or shorter, or “Spot Gas.”

For monthly supplies, where there is greater lead-time for securing supplies, the more formal RFP process is used and more suppliers are contacted as described above. In selecting spot suppliers, SPS evaluates responses based on price, quantity, and operational considerations such as swing requirements, nomination procedures, pipeline flow restrictions at the plant, and availability of transportation.

For daily supplies, where lead-time is short, SPS uses the telephone, email, the Inter-Continental Exchange on-line trading platform, or instant messaging to acquire its short-term gas supply needs. Although SPS strives to make sure that multiple suppliers compete for its daily spot gas needs, the daily spot market is very dynamic, and the price is subject to change minute by minute. Particularly in the day market, if a bid is not accepted at the time offered, spot deals may not be available at the same price or may not be available at all a short while later. For this reason it is not practical or prudent to conduct a comprehensive bid solicitation for daily supplies. This does not imply that SPS enters into spot market deals arbitrarily and without market knowledge. SPS’s gas buyers maintain an awareness of the market on a continuous basis through their active role in the daily gas market, which includes monitoring on-line trading platforms for current prices, and reviewing trade publications and other relevant information. Additionally, the buyers are aware of other supply options, including the quantity and price of natural gas available each day under the term agreements and the alternative cost of fuel oil. This knowledge and awareness help ensure that SPS’s purchases of daily spot gas are reasonable and in the best interest of the customer.

All purchases are covered by written contracts. No spot purchases are made unless a signed contract exists between SPS and the supplier. The types of contracts used include Gas Industry Standards Board (“GISB”) and North American Energy Standards Board (“NAESB”) contracts. All agreements contain general terms and conditions but no specific quantities or pricing. Quantities and pricing are determined through the bidding procedure described above. Once agreements are reached, the price and quantity are recorded. Exhibit As to the spot agreements detailing the date, quantity, price, and delivery point are prepared and sent daily to each supplier for signature.

Emergency Inter-Company Procurement Practices

SPS has a policy to provide guidance in the event an “Emergency Fuel Sale” would need to be made between Xcel Energy operating companies to maintain reliable operations of the receiving Operating Company’s power generating and distribution activities or gas distribution activities

for its firm customers. SPS has not exercised this policy since well before the last Fuel Reconciliation.

Fuel Oil

Purchases of fuel oil are made from multiple suppliers who have access to supplies and truck based transportation to the plants where the fuel oil is to be burned. SPS continually monitors the New York Mercantile Exchange (“NYMEX”) futures contracts for fuel oil to keep abreast of pricing changes. When oil-fired generation is required, SPS solicits bids from available suppliers and arranges for additional supplies to be delivered to the plants from local suppliers.

Purchased Power

SPS is committed to providing its customers with the lowest reasonable cost of power available. From time to time, SPS enters into PPAs to 1) satisfy the capacity and energy needs of its retail and wholesale customers; 2) satisfy its obligations under renewable energy mandates in Texas and New Mexico; and 3) comply with mandatory purchase obligations from qualifying facilities under section 210 of the Public Utility Regulatory Policies Act (“PURPA”).

SPS uses a number of strategies to ensure that it obtains the lowest reasonable cost of energy through its PPAs. SPS seeks and enters into PPAs when the resource planning process determines a need for the resource(s). The Resource Planning personnel prepare requests for proposals, conduct competitive resource solicitations, evaluate bids to identify the most cost-effective resource to meet the need in a timely manner, and clarify bid details. Please refer to the Direct Testimony of Bennie F. Weeks for discussion of the Resource Planning role. Purchased Power personnel then work to achieve the lowest reasonable cost of power purchases for SPS’s customers through the negotiation and administration of the final PPA(s).

Important elements of the work of the Purchased Power personnel include developing contracts in a timely manner, including pay-for-performance provisions in contracts to align the interests of the power suppliers with SPS’s interests; maintaining or improving the risk and price proposed by the bidder for the benefit of SPS customers; and prudently administering contracts, including ensuring that power deliveries meet the terms of the PPA throughout the contract period, and that each PPA invoice is accurate. Invoice verification is accomplished through coordination between Purchased Power and Commercial Accounting Services personnel who compare invoiced deliveries with the SPS revenue-meter readings or scheduled quantities, as applicable for each PPA; confirm that the invoice pricing complies with the applicable provisions of the contract; and check that the invoice calculations are mathematically correct. SPS updates and improves its process and practices by conducting a review after each solicitation and negotiation. Please refer to the Direct Testimony of Jeffrey C. Klein for discussion of the Purchased Power practices.

SPS’s flexibility to dispatch energy from the unit contingent capacity it purchases from fossil-fueled generating facilities varies considerably depending on the specific provisions of each agreement. Some purchase agreements, like the agreements with Orion Engineered Carbons, LLC and Sid Richardson Carbon, LTD, require SPS to receive and purchase the energy produced by the facility on a “must take” basis, i.e., with no dispatch flexibility. Other purchase

agreements give SPS the right to manually dispatch the generating resource. Using the terms specified in each agreement to calculate the applicable energy charges, the energy available from each agreement is offered into the Southwest Power Pool (“SPP”) Day-Ahead and Real-Time Energy markets. SPP integrates all market participant unit offers to deliver a least cost plan for the next day in the case of Day-Ahead markets or the next hour in the case of the Real-Time Balancing Market.

SPS has several long-term purchase agreements with wind generation developers to satisfy its obligations under renewable energy mandates in Texas and New Mexico. Examples of these agreements include the Llano Estacado Wind (White Deer 80 Megawatt [“MW”]) purchase, the Wildorado Wind (162 MW) purchase, the Caprock Wind (80 MW) purchase and the San Juan Mesa Wind (120 MW) purchase. Since these agreements are for purchases from wind generation facilities, the energy is not dispatchable by SPS. All of these purchase agreements were entered into pursuant to SPS competitive bid solicitations for renewable energy resources.

In compliance with the mandatory purchase obligations under section 210 of PURPA, SPS purchases non-firm energy from qualifying small wind generation facilities in Texas pursuant to SPS’s Texas Electric Tariff Sheet No. IV-117 (Purchase of Non-Firm Energy from Qualifying Facilities (“QF”)). Charges for purchases under this tariff are based on SPS’s average avoided energy costs. Examples of these purchases of Non-Firm Energy from QFs include the Aeolus Wind (3 MW) purchase, and the National Windmill Project Inc. (0.66 MW) purchase. The energy delivered to SPS from these QFs is not dispatchable by SPS. SPS currently does not receive any renewable energy credits or any other environmental attributes associated with the wind-generated energy purchased by SPS from these QFs.

SPS, through its Energy Trading group, engages in economic purchases of electric energy for SPS’s customers. In addition, to displace more expensive generation, or for emergencies such as forced outages, Energy Trading makes purchases to meet the system needs at the most economical price available.

SPS’s electric traders continuously survey the wholesale power market for opportunities to buy energy at prices lower than the forecasted incremental cost of SPS’s generation and long-term and short-term purchased power resources. When prices in the marketplace are below the forecasted incremental cost of SPS’s generation resources, SPS can engage in short-term economic purchases for the benefit of SPS’s ratepayers.

Coal

SPS procures coal from TUCO Inc. (“TUCO”) for SPS’s two coal-fueled electric generating facilities, Harrington and Tolk Stations, under a sole supplier contract for each station (Coal Supply Agreements (“CSA”)). The Tolk contract was executed on January 12, 2018 (effective January 1, 2018) and is in effect until December 31, 2022. The Harrington contract was also

executed on January 12, 2018 (effective January 1, 2018), and is in effect until December 31, 2022. TUCO arranges for the purchase, receipt, transportation, unloading, handling, crushing, weighing, and delivery of coal to the bunkers to meet SPS's requirements. TUCO is responsible for negotiating and administering contracts with coal suppliers, transporters, and handlers. The Fuel Supply Operations Department's responsibilities on behalf of SPS include determining SPS's coal needs, administering the CSAs, and overseeing and reviewing TUCO's procurement of coal and transportation services and TUCO's administration of its subcontracts.

SPS purchases coal from TUCO for a delivered price at the bunkers, similar to the utility industry practice of purchasing gas delivered to a generating unit gas header immediately upstream of the boilers. Thus, SPS's delivered price of coal is the sum of TUCO's: (a) Free on Board ("FOB") mine cost of coal; (b) cost of transportation from the mine to the unloading facilities; (c) costs incurred for furnishing railcars and for handling, storing, crushing, processing, weighing, and delivering coal to SPS's bunkers; (d) assessments and taxes (except federal and state income taxes); (e) cost of financing coal inventories; (f) cost of coal losses; and (g) margin.

SPS projects the amount of coal needed for generation and provides these projections to TUCO. TUCO then determines if sufficient coal is available for purchase under its existing coal supply contracts taking into consideration TUCO's stockpile levels, current market conditions and any optional tonnage that might be available under their coal supply contracts. At any given time TUCO attempts to have under contract the following approximate percentages of SPS's coal needs: 90% of next year's need; 60% of the second year's need, and 30% of the third year's need. Each year, TUCO issues new RFP seeking bids for several future years. TUCO evaluates the bids and then begins to firm-up the supply for the next three years by issuing Confirmation Notices. TUCO is not required to accept a bid from any particular supplier and attempts to choose among the quantities and prices offered so as to produce the lowest total coal cost. This process allows TUCO and SPS to take advantage of changes in market conditions over time.

SPS provides oversight and operational input into the bid evaluation process and TUCO's administration of the subcontracts. Written contracts are utilized for all coal purchases.

Southwestern Public Service Company

Fuel and Purchase Power Committees

Transaction Review Committee		
<u>Frequency of Meeting:</u> Weekly (as needed)		
<u>Specific Committee Responsibilities:</u> The Transaction Review Committee (“TRC”) membership consists of the Vice President (“VP”) of Commercial Operations, the VP & Chief Risk Officer, the VP & Controller, the Senior Director, Regulatory Accounting and an Assistant General Counsel. The TRC members are supported by various staff members reporting to them as needed. Teleconferences are scheduled once each week (if there are agenda items) for the purposes of reviewing significant wholesale purchases and sales of electricity, natural gas, coal and other fuels and related services in accordance with procedure. While the TRC is scheduled to meet every week, the meeting is not held if 1) there are no transactions to review; or 2) the transactions are adequately and timely reviewed using email communications prior to Thursday of any given week. The TRC is a component of the Contract Development, Approval, and Delegation review and approval process.		
<u>Specific Committee Authority:</u> The TRC performs a due diligence review of various categories of significant wholesale transactions, taking into account regulatory, reliability, and financial concerns. TRC approval is required prior to committing to and executing a binding agreement.		
Membership		
Name	Title	Company
Tom Imbler	VP Commercial Operations	Xcel Energy Services, Inc.
Karen Hyde	VP & Chief Risk Officer	Xcel Energy Services, Inc.
Jeff Savage	VP & Controller	Xcel Energy Services, Inc.
Michael Rodriguez	Senior Director Regulatory Accounting	Xcel Energy Services, Inc.
Tim Dowdy, David McGann, Peter Glass	Assistant General Counsel	Xcel Energy Services, Inc.

TRC Meetings Convened During the Test Year (April 1, 2018 through March 31, 2019)	
April 2018: 5 th	October 2018: 4 th , 11 th , 18 th
May 2018: None	November 2018: 1 st , 8 th , 15 th
June 2018: 14 th , 28 th	December 2018: 20 th
July 2018: 12 th	January 2019: 10 th
August 2018: 9 th , 23 rd	February 2019: 28 th
September 2018: 20 th	March 2019: 28 th

Note: As discussed in the testimony of William A. Grant, Southwestern Public Service Company (“SPS”) has not filed a fuel reconciliation with its current base rate case in accordance with the Order in Project No. 41905 and 16 Tex. Admin. Code § 25.236 as revised in that project. However, SPS has included this schedule in the filing package because it remains applicable to information presented in SPS’s base rate case.

Southwestern Public Service Company

Fuel and Fuel Related Contracts

April 1, 2018 - March 31, 2019 and April 1, 2019 - June 30, 2019

As discussed in the testimony of William A. Grant, Southwestern Public Service Company (“SPS”) has not filed a fuel reconciliation with its current base rate case in accordance with the Order in Project No. 41905 and 16 Tex. Admin. Code § 25.236 as revised in that project. SPS has included this schedule in the rate filing package with only the information that remains applicable to information presented in SPS’s base rate case.

Purchased Power:

Issue	Description
Counterparty	Borger Energy Associates, L.P.
Facility Name	Blackhawk Station
Ownership	Borger Energy Associates
Location of Facility	Borger, Texas
Facility Type	Gas
Qualifying Facility	Yes
Equipment	Westinghouse 501 D5A turbines Unit 1 Generator – Westac (rewound twice) Unit 2 Generator – Brush (replaced Westac in 2005)
Capacity	224.297 MW (summer 2018 test)
Contract Date	May 23, 1997
Amendments	Ltr Agmt dated 2/12/98
Term	25 year term / June 11, 2024. SPS has the option to extend the initial 25 year contract term for an additional ten (10) years.
Commercial Operation Date	June 12, 1999 (Cogeneration Operation Date—Phase II).
Interconnection/ Delivery Point/ Transmission Service	115 kV bus of each generating unit’s step-up transformer. Firm network transmission service.
Operating Committee	Sec 9.2: One representative and one alternate.

Operating Procedures	Sec 9.2: Procedures are in place and dated July 31, 2003.
Meter Test Schedule	Sec 8.2: Electric: SPS shall test meters annually.
UCC Recertification Due	Sec 6.5: UCC Financing Statement is in place. Last filing made 1/12/2015. Next filing due by 1/12/2020.
Evidence of Insurance	Article 13: To be provided annually. SPS to be named as additional insured on the policies. Current insurance in effect through 11/15/19.
Confidentiality	Section 12.4: No disclosure of designated non-public information except to comply with applicable law, order, regulation or required in connection with Arbitration. Party shall notify other party of disclosure and seek to limit the disclosure.
Right of First Offer and Purchase Option Agreement	Article 7: SPS may: 1. terminate the PPA after the sixth Contract Year with a defined Termination Payment; 2. purchase the Facility beginning in the sixth year equal to its Fair Market Value; and, 3. purchase the Facility at the end of the Initial Term or Extended Term at an amount equal to Fair Market Value. SPS also has the first right of refusal in the any potential sale of Seller's interest.
Option to Extend	Section 3.1: SPS has the option to extend the initial twenty five (25) year contract term ("Initial Term") for an additional ten (10) years ("Extended Term") with three (3) years notice prior to the end of the Initial Term.
Subordinated Mortgage	Sec 6.5. Subordinated mortgage entered into 5/1/1998.
Security	N/A
Damage Cap	Section 6.3. Defined Capacity Shortfall Damages apply for any capacity shortfall during On-Peak Months.
Fixed Charges	As of June 12, 2019: Capacity Payment and Fixed O&M Rate: \$4.299/kW-mo in accordance with 2020 budget)
Variable O&M Payment	As of June 12, 2019: Variable O&M Price: \$2.519/MWh in accordance with 2020 budget.
Gas and Other Charges	Gas charges calculated based on gas price. Gas Reservation Charge: \$15,500/month (fixed); Seller's Charge: \$465.18/month as of June 12, 2018 (Credit to SPS; Adjusts annually on June 12 based on annual changes in GDP-IPD index).
Billing/Payment	SPS prepares a monthly statement within 10 calendar days after the end of the month. Payment is due 15 days after receipt of Borger's monthly invoice.
Summer Capacity	Section 2.6(E), annually approximately one year apart, using

Test Schedule/Results	SPP criteria set forth in Schedule C-1, C-2 and Operating Procedures. Most recent test: 2018. 224.297 MW.
Winter Capacity Test Schedule/Results	N/A
Heat Rate Test Schedule/Results	N/A
Predicted Heat Rate	Guaranteed (contract) HR 7,000-7,300 Btu/kWh as set forth in Schedule F-4.
Dispatchability Test Schedule/Results	Operating Procedures: Periodically.
Other Required Tests	N/A
Outage Schedules	Section 9.3: Annual Maintenance Schedule for the following year and Maintenance Schedule for the following four years due by July 1 each year.

Issue	Description
Counterparty	Sid Richardson Carbon, Ltd.
Facility Name	Borger Plant
Ownership	Tokai Carbon CB Ltd.
Location of Facility	Borger, Texas
Facility Type	Carbon black waste generating facility
Qualifying Facility	Yes
Equipment	N/A
Capacity	Up to 25 MW
Contract Date	July 30, 2001
Amendments	First Amendment dated July 17, 2007; Second Amendment dated February 19, 2015.
Term	20 year term /August 1, 2001 - July 31, 2021; thereafter automatically extended unless terminated upon written notice by either party in accordance with Section 4.02.
Commercial Operation Date	N/A
Interconnection and Point of Delivery	The point at which the 69 kV line crosses the property boundary between SPS and Sid Richardson. Sid Richardson will reimburse SPS for major repairs to the breaker up to \$3,000 within 30 days of invoicing by SPS.
Operating Committee	N/A

Operating Procedures	N/A
Meter Tests	Section 2.04 – SPS will test in accordance with its normal practices.
UCC Recertification Due	N/A
Evidence of Insurance	N/A
Confidentiality	N/A
Right of First Offer and Purchase Option Agreement	N/A
Option to Extend	N/A
Subordinated Mortgage	N/A
Security	Section 2.10 - SPS has the right to require a deposit not to exceed two times the dollar amount of the average net difference of sales and purchases from Sid Richardson - records reflect that a deposit was never required.
Damage Cap	N/A
Demand Charge	\$4.10/kW/mo fixed for term
Energy Charge	\$2.00/MWh fixed for term
Admin Charge	(\$710.00)
Summer Capacity Test	Section 2.11 required every 3 years at Sid Richardson's expense. Most recent test: 6/14/17 – 5,652 kW.
Winter Capacity Test	N/A
Heat Rate Tests	N/A
Predicted Heat Rate	N/A
Dispatchability Test	N/A
Other Required Tests	N/A
Outage Schedules	Section 3.05 – maintenance outages must be scheduled 60 days in advance.
Notes/Comments	Sid Richardson sells to SPS all power produced less the power needed to operate the plant.

Issue	Description
Counterparty	Lubbock Power and Light
Facility Name	Cooke Station
Ownership	Lubbock Power and Light, City of Lubbock, Texas (“LP&L”)
Location of Facility	Lubbock, Texas
Facility Type	Gas
Qualifying Facility	No
Equipment	Gas Turbine 2 (Turbine Pratt-Whitney Jet Engine Generator Electric) Gas Turbine 3 (Turbine/Generator General Electric)
Capacity	33 MW (as of 4/1/2016)
Contract Date	June 30, 2004
Amendments	1. 4/5/2005 2. 3/14/2016 (Letter Agreement)
Term	15 year term / June 30, 2019
Commercial Operation Date	GT2 – 1973; GT3 – 1974
Interconnection/ Delivery Point/ Transmission Service	LP&L generation flows to the SPS system at four 230 KV interconnection points which include Jones, Lubbock East, Lubbock South and Carlisle Firm network transmission service.
Operating Committee	Section 10.1: One representative from each party is named. Representatives meet once per year to review the past year’s operation and future expected performance.
Operating Procedures	N/A
Meter Test Schedule	Electric: Section 5.3 all metering devices shall be inspected and tested at least annually by LP&L.
UCC Recertification Due	N/A
Evidence of Insurance	N/A
Confidentiality	No
Right of First Offer and Purchase Option Agreement	N/A
Option to Extend	N/A

Subordinated Mortgage	N/A
Security	N/A
Damage Cap	N/A
Fixed Charges	Capacity Charge: \$2,120 per MW month (fixed).
Energy Payment Rate	O&M Charge: \$3.50 per MWh (fixed). Gas: SPS is responsible for paying for the gas and gas transportation.
Other Charges	None.
Billing/Payment	LP&L issues a monthly statement to SPS. Payment is due 15 days after receipt of LP&L's monthly statement.
Summer Capacity Test	Section 10.2: Annual Capacity Test must be performed before Summer season (May 15-Sept 15).
Winter Capacity Test	N/A
Heat Rate Test	N/A
Predicted Heat Rate	Summer/Winter respectively: GT2 11,270 and 11,900 Btu/kWh; GT3 14,820 and 13,760 Btu/kWh (Estimated based on internal dispatching information).
Dispatchability Test Schedule/Results	N/A
Other Required Tests	N/A
Outage Schedules	Section 6.1: Maintenance Schedule is mutually developed and agreed upon annually.

Issue	Description
Counterparty	Lea Power Partners, LLC
Facility Name	Hobbs Generating Station
Ownership	Harbert Power Fund V, LLC
Location of Facility	Lea County, New Mexico, a couple miles west of the town of Hobbs.
Facility Type	Natural gas fueled, combined cycle facility
Qualifying Facility	No
Equipment	Two Mitsubishi MHI Frame 501F Combustion Turbines with chillers. GE D11 reheat steam turbine.
Capacity	604 MW Winter/502 MW Summer
Contract Date	October 20, 2006
Amendments	Am. No. 1 dated April 4, 2007; Am. No. 2 dated May 30,

	2007; Am. No. 3 dated September 23, 2008; Am. No. 4 dated August, 2010; Am. No. 5 dated June 10, 2014.
Term	25 year term /September 15, 2033
Commercial Operation Date	September 16, 2008
Interconnection and Point of Delivery	One combustion turbine and one steam turbine are interconnected to the 115 kV line from Lea County Interchange to Denver City Sub. The other combustion turbine is interconnected to the 230 kV line from Lea County Interchange to Midland Sub.
Operating Committee	Section 10.5 – one representative and one alternate from each party.
Operating Procedures	Section 10.5 – procedures dated September 16, 2008.
Meter Tests	Section 5.3 – tested annually.
UCC Recertification Due	N/A
Evidence of Insurance	Section 16.1 – due June 1 of each year.
Confidentiality	N/A
Right of First Offer and Purchase Option Agreement	Section 20.19 - exercisable any time after the 17th Commercial Operation Year (9/16/2025).
Option to Extend	No
Subordinated Mortgage	Section 11.2 – dated 9/16/08.
Security	LOC No. S326928M in the amount of \$37,750,000 expires 6/17/21. LOC No. LG/MIS/NY-069373 in the amount of \$37,750,000 expires 6/17/21.
Damage Cap	\$75.5M
Capacity Price	\$7.21 kW/month (fixed for term).
Tolling Payment (variable O&M)	\$2.25 MWh tolling price as of May 1, 2019 in accordance with 2020 budget (escalates annually on May 1). Tolling payment also includes any heat rate adjustment amount.
Dispatchability Payment	\$0.25 kW/month (fixed for term).
Turbine Starts	First 25 starts at no charge.
Billing/Payment	Seller will provide invoice to SPS. Payment is due 15 Business days after receipt of invoice.

Summer Capacity Test	Exhibit E – every 3 years (557,712 on 6/16/16).
Winter Capacity Test	Exhibit E – every 3 years (603,896 on 1/8/19).
Heat Rate Tests	Section 8.5 – annually (7,372 on 6/13/18).
Predicted Heat Rate	7,690 Btu/kWh as of 6/13/18.
Dispatchability Test	Exhibit A – periodically.
Other Required Tests	N/A
Outage Schedules	Section 10.1 – provided by February 1 of each year.

Issue	Description
Counterparty	Oneta Power, LLC
Facility Name	Oneta Energy Center
Ownership	LS Power
Location of Facility	Coweta, Oklahoma
Facility Type	1134 MW electric generating facility
Qualifying Facility	No
Equipment	General Electric
Capacity	200 MW allocated to SPS
Contract Date	May 7, 2010
Amendments	First Amendment dated 8/23/10; Second Amendment dated 2/26/14; Third Amendment dated 6/25/14.
Term	7 year term / December 31, 2018
Commercial Operation Date	July 1, 2002
Interconnection and Point of Delivery	Busbar for the turbine connected to the SPP grid.
Operating Committee	N/A
Operating Procedures	N/A
Meter Tests	N/A

UCC Recertification Due	N/A
Evidence of Insurance	N/A
Confidentiality	Section 10.11 as amended – consent required with exceptions.
Right of First Offer and Purchase Option Agreement	N/A
Option to Extend	N/A
Subordinated Mortgage	N/A
Security	[REDACTED]
Damage Cap	[REDACTED]
Capacity Price (Fixed)	<p>2012 [REDACTED] June-Sept [REDACTED] all other months</p> <p>2013 [REDACTED] June-Sept [REDACTED] all other months</p> <p>2014 [REDACTED] June-Sept [REDACTED] all other months</p> <p>2015 [REDACTED] June-Sept [REDACTED] all other months</p> <p>2016 [REDACTED] June-Sept [REDACTED] all other months</p> <p>2017 [REDACTED] June-Sept [REDACTED] all other months</p> <p>2018 [REDACTED] June-Sept [REDACTED] all other months</p>
Variable O&M Charge	[REDACTED] as of January 1, 2018. Charge escalates on January 1 of each year in accordance with the GDP-IPD.
Scheduling Charge	As of January 1, 2018, [REDACTED] per schedule; an additional [REDACTED] per hour if schedule exceeds 24 hours. Both of these charges escalate January 1 of each year in accordance with the GDP-IPD.
Summer Capacity Test	N/A
Winter Capacity Test	N/A
Heat Rate Tests	N/A

Predicted Heat Rate	N/A
Dispatchability Test	N/A
Other Required Tests	N/A
Outage Schedules	480 hours of planned maintenance scheduled August 1 of each year and one year with 740 hours.

Issue	Description
Counterparty	Oneta Power, LLC
Facility Name	Oneta Energy Center II
Ownership	LS Power
Location of Facility	Coweta, Oklahoma
Facility Type	1134 MW electric generating facility
Qualifying Facility	No
Equipment	General Electric
Capacity	200 MW allocated to SPS
Contract Date	June 1, 2012
Amendments	First Amendment dated 6/25/14.
Term	5 year term /June 1, 2014 thru May 31, 2019.
Commercial Operation Date	July 1, 2002
Interconnection and Point of Delivery	Busbar for the turbine connected to the SPP grid.
Operating Committee	N/A
Operating Procedures	N/A
Meter Tests	N/A
UCC Recertification Due	N/A
Evidence of Insurance	N/A

Confidentiality	Section 10.11 as amended – consent required with exceptions.
Right of First Offer and Purchase Option Agreement	N/A
Option to Extend	N/A
Subordinated Mortgage	N/A
Security	[REDACTED]
Damage Cap	[REDACTED].
Capacity Price (Fixed)	2014 [REDACTED] June-Sept [REDACTED] all other months (6/1/2014-5/31/2015) 2015 [REDACTED] June-Sept [REDACTED] all other months (6/1/2015-5/31/2016) 2016 [REDACTED] June-Sept [REDACTED] all other months (6/1/2016-5/31/2017) 2017 [REDACTED] June-Sept [REDACTED] all other months (6/1/2017-5/31/2018) 2018 [REDACTED] June-Sept [REDACTED] all other months (6/1/2018-9/30/18)) 10/1/18-5/31/19 [REDACTED]
Variable O&M Charge	[REDACTED] as of January 1, 2019. Charge escalates on January 1 of each year in accordance with the GDP-IPD.
Scheduling Charge	As of January 1, 2019, [REDACTED] per schedule; an additional [REDACTED] per hour if schedule exceeds 24 hours. Both of these charges escalate January 1 of each year in accordance with the GDP-IPD.
Summer Capacity Test	N/A
Winter Capacity Test	N/A
Heat Rate Tests	N/A

Predicted Heat Rate	N/A
Dispatchability Test	N/A
Other Required Tests	N/A
Outage Schedules	480 hours of planned maintenance scheduled August 1 of each year and one year with 740 hours.

Issue	Description
Counterparty	Bonita Wind, LLC
Facility Name	Bonita
Ownership	NextEra Energy Resources
Location of Facility	Crosby and Cochran Counties, Texas
Facility Type	Wind
Qualifying Facility	No
Equipment	10 safe harbored GE 1.715 MW turbines/80 meter Hub Height 59 GE 2.3 MW turbines/90 meter Hub Height 30 GE 2.3 MW turbines/80 meter Hub Height 1 GE 2.1 MW turbines/80 meter Hub Height 2 GE 2.1 MW turbines/90 meter Hub Height 1 GE 2.0 MW turbines/80 meter Hub Height
Capacity	230 MW; 80 MW Phase I (Lorenzo) and 150 MW Phase II (Wildcat)
Contract Date	March 7, 2017
Amendments	<u>First Amendment 12/17/2018</u> <ul style="list-style-type: none"> Error corrected in Section 7.4(A) re Seller's Ancillary Services duties; details that Seller is not required to make capex or incur increased opex in connection with ancillary services efforts. Updated turbine list to be used at facilities.
Term	30 year term; 12/14/2048
Commercial Operation Date	December 15, 2018
Interconnection and Point of Delivery	Phase I: 115kV switching station on the Floyd Co.-Crosby Co. 115kV transmission line. Phase II: 115kV switching station on the Cochran Co.-

	Lehman 115kV transmission line.
Transmission Service Type	Firm
Operating Committee	Yes Section 10.7/One representative (Not Active)
Operating Procedures	Yes Optional/Section 10.7
Meter Tests	Yes/Section 5.3
UCC Recertification Due	No
Evidence of Insurance	Section 16.1 / McGriff, Seibels & Williams, Inc, expires 9/15 annually.
Confidentiality	Yes / Section 20.18 / Construction Contracts & Construction Contract Milestones; Phase I environmental investigation; information disclosed to Company by Seller with respect to the ROFO and PFT; Energy Payment Rate.
Right of First Offer and Purchase Option Agreement	Yes / Section 19. ROFO option in the event Seller proposes to sell the facility (or a majority equity interest); a Pending Facility Transaction option; and in the event the NextEra YieldCo dissolves and the option is exercised within six months of the end of the term.
Option to Extend	No
Subordinated Mortgage	No
Security	\$17.250,000 (\$75/kW)
Damage Cap	\$17,250,000
Fixed Charges	No capacity payments.
Energy Payment Rate	12/15/2018 – 12/14/2019: \$18.10/MWh Escalates 2% annually on 12/15.
Other Charges	N/A
Contract Year	COD to COD, Dec 15 to Dec 14.
Equivalent Availability Requirement	Mechanical Availability Guarantee: 90% for the first 20 years, 85% for the final 10 years. Starting in the second Commercial Operation Year, failure to meet the Availability Guarantee results in damages on an annual basis. Failure to meet the Guarantee for 3 consecutive years, 4 out of 6 years or less than 65% in any given calendar year is an Event of Default under the PPA.
Committed Energy	N/A

Allowable curtailment	Allowable – use Exhibit L Curtailment Protocol
Excess Energy	N/A
Billing/Invoice	Payments shall be payable by check or electronic funds transfer, as designated by the owed Party, on or before the 15 Business Day following receipt of the invoice.
House Power	The PPA does not provide for the supply of retail power to the Facility ("House Power"). If the local provider is SPS or an affiliate, Bonita can self-generate and net out the generation from the Contract Energy provided under the PPA.
Automatic Generator Control	Yes
Real-Time Data	Yes

Contract Summary

Supplier Name: TUCO Inc.

Fuel Type: Coal

Supplier Address: 6900 West I-40 Suite 240
Amarillo, TX 79106-2525

Plant(s) Served: Harrington

Negotiation Date: January 12, 2018, effective January 1, 2018. Please refer to WP I-4.

Original Date of Supply or Service: January 1, 2018.

Term: January 1, 2018 through December 31, 2022.

May be extended (one) 5-year period with the agreement of both parties with written notice at least 180 days prior to expiration of the agreement.

Buyer and Seller have the right to terminate this agreement on at least one (1) year's written notice to the other.

Pricing Mechanism: For each billing period, in dollars per ton, the sum of (a) cost of coal, including base price F.O.B. mine, with any quality or other adjustments (Coal Cost); (b) cost of transportation from the mine to the unloading facilities (Third Party Costs); (c) costs incurred for furnishing railcars and for handling, storing, crushing, processing, weighing, and delivering coal (Harrington CHSA Costs); and (d) Costs of coal losses; plus a monthly margin amount (See Section 7.1).

Purchase Obligation: Annual Quantity as determined on or before October 1, 2017, and by each subsequent October 1 during Term of Agreement by SPS to meet projected burn for following year. SPS shall also provide notice of reasonable estimate for upcoming year (Annual Quantity year) and two years subsequent to the Annual Quantity year. Quantities measured in terms of tons delivered.

Maximum Quantities Available: TUCO shall acquire by separate agreement coal sufficient to satisfy SPS's Annual Quantity requirements and such additional coal as may be necessary to provide a continuous supply of coal to meet Harrington's annual burn and inventory requirements.

Economic Out Provision: None.

Delivery Point(s): Coalbunkers at Harrington Station.

Transportation Provision: Fuel is purchased F.O.B. at the Point(s) of Delivery (Harrington bunkers) at price expressed in dollars MMBtu and includes all transportation fees to the Point(s) of Delivery. TUCO has entered into a transportation Agreement with

the BNSF for transportation of coal supplies delivered under this Agreement. In addition, TUCO has entered into a contract with Savage Harrington Corporation to provide coal-handling services.

Quality or Measurement:

Coal to be within specified ranges for typical coal set forth in Exhibit B to the contract, including ranges for Btu/lb., Moisture, Ash, Sulfur, and Lbs. of SO₂.

- Samples taken by TUCO per American Society of Testing and Materials (“ASTM”) standards; results reported in a monthly analysis prepared by SPS.
- Either party may question correctness of original analysis; commercial testing laboratory then used to do an independent analysis.
- SPS has right to have representative present to observe sampling.

Accounting Procedures and Billing:

- Seller shall use generally accepted accounting principles and per ton weight averaging determined at the close of each calendar month.
- Seller is to invoice on or before 8th day of each month.
- Invoices are due and payable on or before 1st working day after 15th day of month.
- All statements, billings, and payments shall be subject to correction within two years of the date of the invoice.
- Past due interest charges are assessed at 1% over prime.

Force Majeure: Force majeure clause is plant specific. May claim partial force majeure. Complete shutdown is not required.

Contract Summary

Supplier Name: TUCO Inc.

Fuel Type: Coal

Supplier Address: 6900 West I-40 Suite 240
Amarillo, TX 79106-2525

Plant(s) Served: Tolk

Negotiation Date: January 12, 2018, effective January 1, 2018. Please refer to WP I-4.

Original Date of Supply or Service: January 1, 2018.

Term: January 1, 2018 through December 31, 2022.

May be extended (one) 5-year period with the agreement of both parties with written notice at least 180 days prior to expiration of the agreement.

Buyer and Seller have the right to terminate this agreement on at least one (1) year's written notice to the other.

Pricing Mechanism: For each billing period, in dollars per ton, the sum of (a) cost of coal, including base price FOB mine, with any quality or other adjustments (Coal Cost); (b) cost of transportation from the mine to the unloading facilities (Third Party Costs); (c) costs incurred for furnishing railcars and for handling, storing, crushing, processing, weighing, and delivering coal (Harrington CHSA Costs); (d) Costs of coal losses; and (e) a monthly margin amount (See Section 7.1).

Purchase Obligation: Annual Quantity as determined on or before October 1, 2017, and by each subsequent October 1 during Term of Agreement by SPS to meet projected burn for following year. SPS shall also provide notice of reasonable estimate for upcoming year (Annual Quantity year) and two years subsequent to the Annual Quantity year. Quantities measured in terms of tons delivered.

Maximum Quantities Available: TUCO shall acquire by separate agreement coal sufficient to satisfy SPS's Annual Quantity requirements and such additional coal as may be necessary to provide a continuous supply of coal to meet Tolk's annual burn and inventory requirements.

Economic Out Provision: None.

Delivery Point(s): Coalbunkers at Tolk Station.

Transportation Provision: Fuel is purchased F.O.B. at the Point(s) of Delivery (Tolk bunkers) at price expressed in dollars MMBtu and includes all transportation fees to the Point(s) of Delivery. TUCO has entered into a transportation Agreement with the BNSF

for transportation of coal supplies delivered under this Agreement. In addition, TUCO has entered into a contract with Savage Tolk Corporation to provide coal-handling services.

Quality or Measurement:

Coal to be within specified ranges for typical coal set forth in Exhibit B to the contract, including ranges for Btu/lb., Moisture, Ash, Sulfur, and Lbs. of SO₂.

- Samples taken by TUCO per ASTM standards; results reported in a monthly analysis prepared by SPS.
- Either party may question correctness of original analysis; commercial testing laboratory then used to do an independent analysis.
- SPS has right to have representative present to observe sampling.

Accounting Procedure and Billing:

- Seller shall use generally accepted accounting principles and per ton weight averaging determined at the close of each calendar month.
- Seller is to invoice on or before 8th day of each month.
- Invoices are due and payable on or before 1st working day after 15th day of month.
- All statements, billings, and payments shall be subject to correction within 2 years of the date of the invoice.
- Past due interest charges are assessed at 1% over prime.

Force Majeure: Force majeure clause is plant specific. May claim partial force majeure. Complete shutdown is not required.

Southwestern Public Service Company

Combustion Residual Production

Line No.	Plant	Month	Fly Ash (Tons)	Bottom Ash (Tons)	Scrubber Sludge (Tons)
1	Harrington	April 2018	6,134	1,009	-
2		May 2018	8,665	1,332	-
3		June 2018	10,669	1,221	-
4		July 2018	11,460	765	-
5		August 2018	10,567	1,206	-
6		September 2018	7,658	1,232	-
7		October 2018	6,897	2,478	-
8		November 2018	8,177	1,407	-
9		December 2018	5,717	925	-
10		January 2019	13,191	573	-
11		February 2019	7,935	1,138	-
12		March 2019	7,316	856	-
13	Subtotal		104,385	14,143	-
			Fly Ash (Tons)	Bottom Ash (Tons)	Scrubber Sludge (Tons)
14	Tolk	April 2018	4,068	1,332	-
15		May 2018	5,220	1,101	-
16		June 2018	7,335	1,947	-
17		July 2018	8,606	762	-
18		August 2018	10,022	1,125	-
19		September 2018	8,395	491	-
20		October 2018	4,815	1,666	-
21		November 2018	4,838	584	-
22		December 2018	6,928	390	-
23		January 2019	4,906	1,696	-
24		February 2019	4,053	687	-
25		March 2019	4,525	983	-
26	Subtotal		73,711	12,762	-
27	Total Test Year		178,095	26,905	-

Southwestern Public Service Company

Coal Combustion Residual Disposal

The disposal method for the combustion residual that is produced at the Tolk Station and Harrington Station Units is as follows:

The fly ash is collected by either electrostatic precipitator (Harrington Station Unit 1) or bag house (Harrington Station Units 2 and 3 and Tolk Station Units 1 and 2). The ash is dry conveyed to storage silos for ultimate sale into markets including cement replacement markets. Alternatively, it can be conditioned with water and deposited into storage pits for future sale into markets such as road or parking lot base. None of the Units utilize sorbents for sulfur oxide nor do any of the Units utilize flue gas conditioning agents for nitrous oxide control. Thus, no combustion residuals related to these flue gas emissions control technologies are produced. Through extensive testing, mercury sorbents were found that do not adversely affect the marketability of the fly ash. Additionally when needed there is a product that is injected into the flue gas prior to the electrostatic precipitator to enhance its performance. This product also does not deter the marketability of the fly ash.

The bottom ash falls to the bottom of the furnace, is cooled by water and is removed by a drag chain to a point outside of the boiler building. It is then allowed to dewater and it is picked up by a front-end loader and loaded into dump trucks by the current Southwestern Public Service Company (“SPS”) contractor, Lafarge, who manages and processes all ash processed by SPS for beneficial use and resale. It is then moved to a storage area and sold as is, or crushed and screened into different sizes and then resold for use as fill material for pipelines, road base, ice skid control and topping rock for asphalt paving sealing. All costs associated with the handling, processing storage and sale of the ash are paid by Lafarge. SPS then receives a percentage of the overall sales of the ash to beneficial use markets.

Southwestern Public Service Company

Combustion Residual Disposal Costs

Line No.	Plant	Month	Tons Sold	Revenue	Costs
1	Harrington	April 2018	7,142.05	\$75,162.02	\$ -
2		May 2018	9,996.55	\$114,604.81	-
3		June 2018	11,889.81	\$132,351.35	-
4		July 2018	12,225.04	\$132,499.45	-
5		August 2018	11,772.88	\$135,461.58	-
6		September 2018	8,890.20	\$92,000.08	-
7		October 2018	9,375.83	\$95,777.30	-
8		November 2018	9,583.34	\$91,340.54	-
9		December 2018	6,642.43	\$76,814.11	-
10		January 2019	13,764.08	\$141,514.38	-
11		February 2019	9,073.18	\$97,044.29	-
12		March 2019	8,172.43	\$82,041.56	-
13	Subtotal		118,527.82	\$ 1,266,611.47	\$ -
	Plant	Month	Tons Sold	Revenue	Costs
14	Tolk	April 2018	5,399.79	\$60,850.89	\$ -
15		May 2018	6,320.67	\$73,153.84	-
16		June 2018	9,281.94	\$117,073.37	-
17		July 2018	9,368.65	\$132,507.65	-
18		August 2018	11,146.39	\$150,191.67	-
19		September 2018	8,885.95	\$120,964.70	-
20		October 2018	6,480.95	\$69,595.79	-
21		November 2018	5,421.17	\$67,595.79	-
22		December 2018	7,317.83	\$101,816.71	-
23		January 2019	6,602.14	\$71,735.03	-
24		February 2019	4,739.18	\$57,238.33	-
25		March 2019	5,508.26	\$65,808.48	-
26	Subtotal		86,472.92	\$ 1,088,532.25	\$ -
27	Total Test Year		205,000.74	\$ 2,355,143.72	\$ -

Notes: Revenues derived from sale of ash products and expenses related to ash handling are accounted for using separate Object Accounts according to Generally Accepted Accounting Principles. The two Object Accounts will net together for Federal Energy Regulatory Commission purposes.

All costs associated with the handling, processing, storage and sale of the ash are paid by an outside contractor.

Southwestern Public Service Company

Natural Gas Delivery System

As discussed in the testimony of Southwestern Public Service Company (“SPS”) witness William A. Grant, SPS has not filed a fuel reconciliation with its current base rate case in accordance with the Order in Project No. 41905 and 16 Tex. Admin. Code § 25.236 as revised in that project. However, SPS has included this schedule in the filing package because it remains applicable to information presented in SPS’s base rate case.

Line No.	Plant Name ¹	Maximum Plant Capacity MMBtu/day ²	Pipeline Operator	Pipelines Feasibly Connected	Pipelines Currently Connected	Maximum Operating Capacity MMBtu/day ³	Pipeline Capacity % Maximum Plant Capacity
1	Jones	202,776	Oneok Westex Transmission, L.P.		X	60,000	29
2			Markwest Power-Tex L.P.		X	60,000	29
3			Red River Pipeline		X	120,000	59
4			Northern Natural Gas Company	X			
5	Nichols	109,910	Oneok Westex Transmission, L.P.		X	90,000	82
6			Colorado Interstate Gas Company		X	187,000	170
7			El Paso Natural Gas Company	X			
8			Natural Gas Pipeline of America	X			
9			Transwestern Pipeline Company	X			
10	Cunningham	124,000	El Paso Natural Gas Company		X	46,000	37
11			Markwest Pinnacle L.P.		X	15,000	12
12			Northern Natural Gas Company		X	118,000	95
13			Transwestern Pipeline Company	X			
14	Maddox	50,000	Raptor		X	10,000	20
15			Markwest Pinnacle L.P.		X	48,000	96
16			Northern Natural Gas Company	X			
17			Transwestern Pipeline Company	X			
18			El Paso Natural Gas Company	X			
19	Hobbs	100,000	El Paso Natural Gas Company		X	150,000	150
20			Northern Natural Gas Company		X	100,000	100
21			Markwest Pinnacle L.P.		X	110,000	110
22	Plant X	113,140	Oneok Westex Transmission, L.P.		X	60,000	53
23			El Paso Natural Gas Company		X	60,000	53

¹ Harrington and Tolk coal plants are not listed as they only use gas for startup.

² Maximum Plant Capacity is based on the maximum generating capacity of each unit.

³ Operating Capacity is defined as the average normal operating capacity through the interconnecting meter.

Southwestern Public Service Company

Natural Gas Storage Description

As discussed in the testimony of William A. Grant, Southwestern Public Service Company (“SPS”) has not filed a fuel reconciliation with its current base rate case in accordance with the Order in Project No. 41905 and 16 Tex. Admin. Code (“TAC”) § 25.236 as revised in that project. Additionally, SPS is not proposing a new fuel factor under 16 TAC § 25.237. Therefore, rate year data is not applicable.

Contracts and Facilities

Oneok Texas Gas Storage

SPS continues to contract with Oneok Texas Gas Storage for a storage service with a term of September 1, 2017 through August 31, 2022.

Since SPS does not own and/or operate this facility, a description of the facility or a schematic illustrating the physical layout and operation of the facility is unavailable.

Contract terms require SPS to pay a monthly capacity charge.

A copy of the natural gas storage agreement is included in the workpapers to Schedule I-7.

Northern Natural Gas Company Storage Contract

SPS continues to contract with Northern Natural Gas Company for a storage service with a term of June 1, 2008 through March 31, 2028.

Since SPS does not own and/or operate this facility, a description of the facility or a schematic illustrating the physical layout and operation of the facility is unavailable.

A copy of the natural gas storage agreement is included in the workpapers to Schedule I-7.

Contract terms require SPS to pay an annual reservation charge.

Injections, Withdrawals and Inventory

Following are the monthly injections, withdrawals and month end inventory balances for the Test Year (April 1, 2018 through March 31, 2019) ("Test Year"). (All amounts represent actual activity, there are no estimated values.)

Month	Injections	Withdrawals	Ending Balance	Ending Balance
	MMBtu	MMBtu	MMBtu	Dollars
Beginning Balance			1,383,353	\$3,419,009
April 2018	547,483	(1,035,876)	894,960	2,010,418
May 2018	705,060	(647,471)	952,549	1,760,925
June 2018	835,395	(447,544)	1,340,400	2,541,803
July 2018	937,174	(723,259)	1,554,315	3,401,103
August 2018	636,832	(309,838)	1,881,309	3,832,907
September 2018	1,192,830	(1,058,649)	2,015,490	4,167,488
October 2018	1,376,013	(716,002)	2,675,501	4,553,092
November 2018	1,365,390	(1,378,612)	2,662,280	4,384,809
December 2018	802,049	(957,994)	2,506,335	4,073,926
January 2019	726,729	(849,602)	2,383,461	4,077,905
February 2019	1,021,765	(612,588)	2,792,639	4,632,207
March 2019	954,081	(977,357)	2,769,363	\$4,220,608

Monthly Costs

Following are the monthly costs for gas storage for the Test Year.

Month	Oneok Gas Storage Demand	Northern Natural Demand	Northern Natural Injection / Withdrawal Charge	Total
April 2018	\$107,400	\$211,700	\$12,537	\$331,637
May 2018	107,400	211,700	6,109	325,209
June 2018	107,400	719,780	11,492	838,672
July 2018	107,400	719,780	15,742	842,922
August 2018	107,400	719,780	8,115	835,295
September 2018	107,400	719,780	19,603	846,783
October 2018	107,400	719,780	20,863	848,043
November 2018	107,400	211,700	29,850	348,950
December 2018	107,400	211,700	27,018	346,118
January 2019	107,400	211,700	16,133	335,233
February 2019	107,400	211,700	17,819	336,919
March 2019	107,400	211,700	23,936	343,036
Total	\$1,288,800	\$5,080,800	\$209,217	\$6,578,817

Southwestern Public Service Company

Fuel Properties

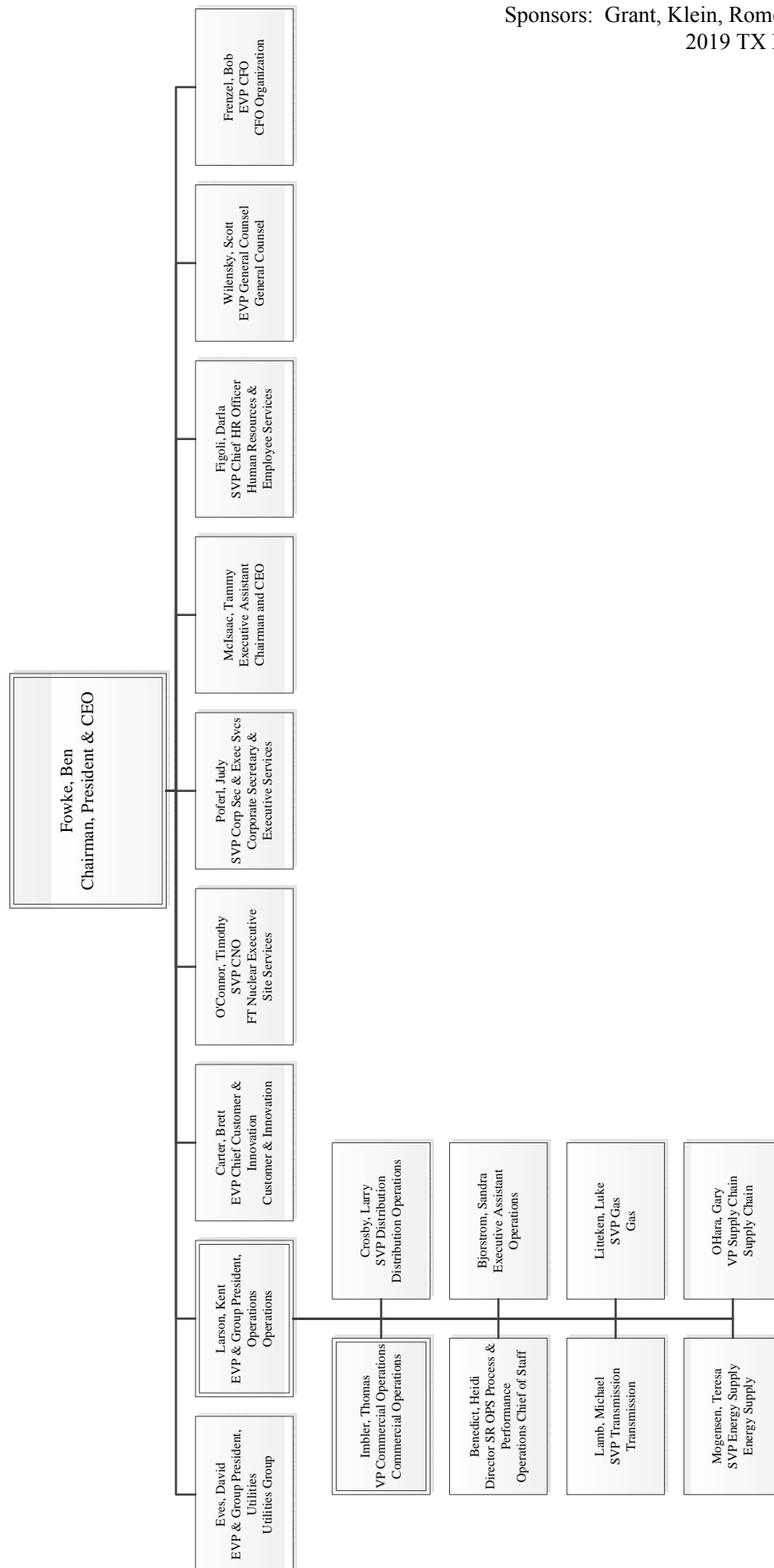
Southwestern Public Service Company (“SPS”) does not own, partly or wholly, any fuel-related properties.¹

SPS receives royalty income from production from oil and gas leases on company owned property in the following counties:

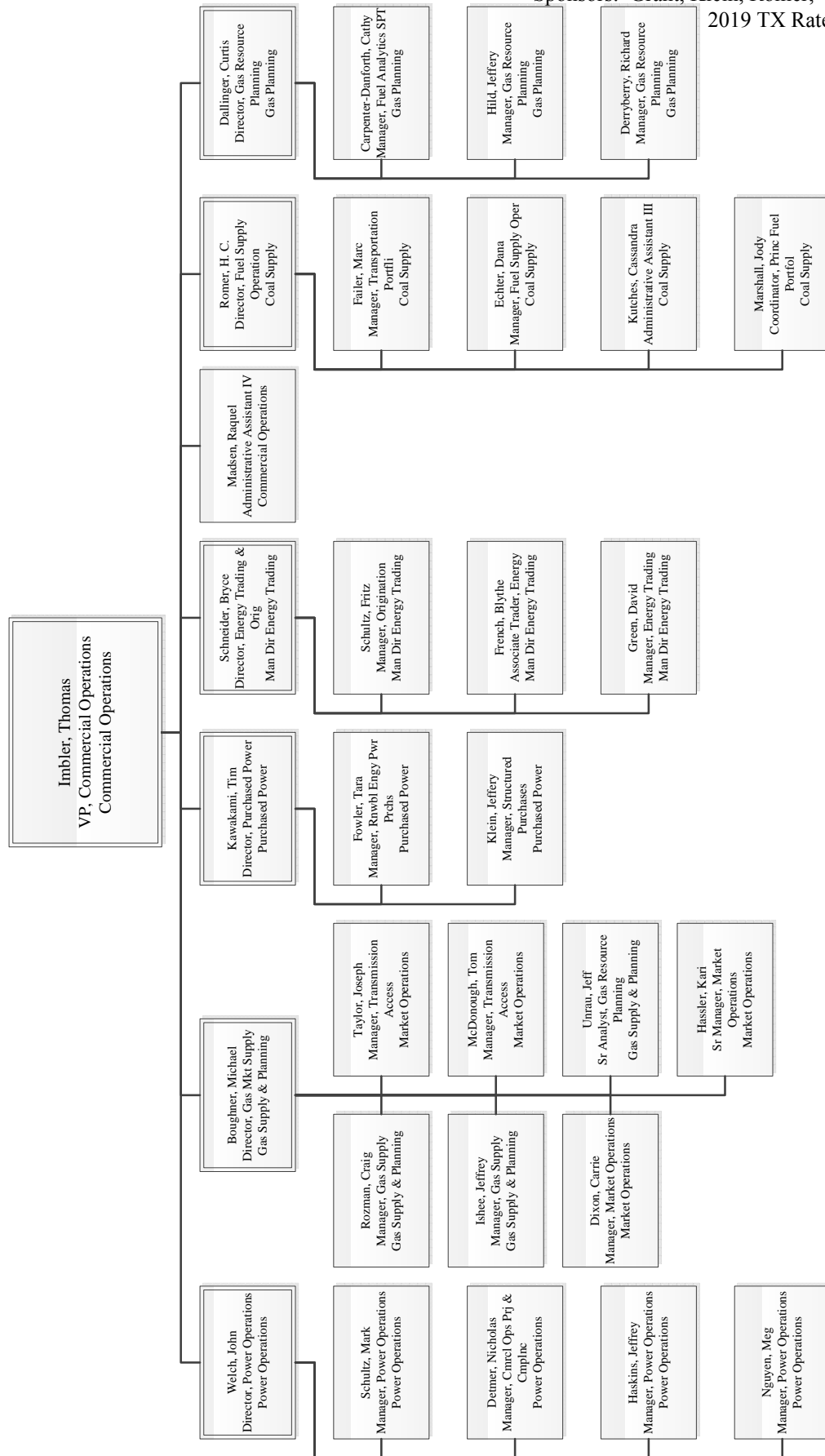
- Texas – Hockley and Moore Counties;
- Oklahoma – Beaver and Texas Counties; and
- New Mexico – Eddy County.

¹ SPS defines fuel-related property as a property for which the primary use is fuel production.

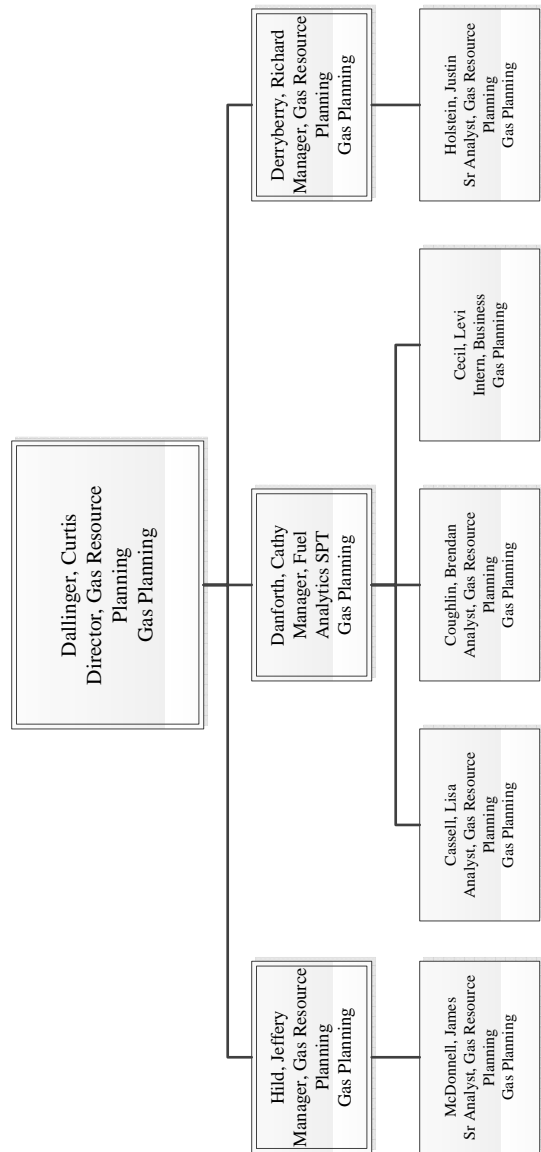
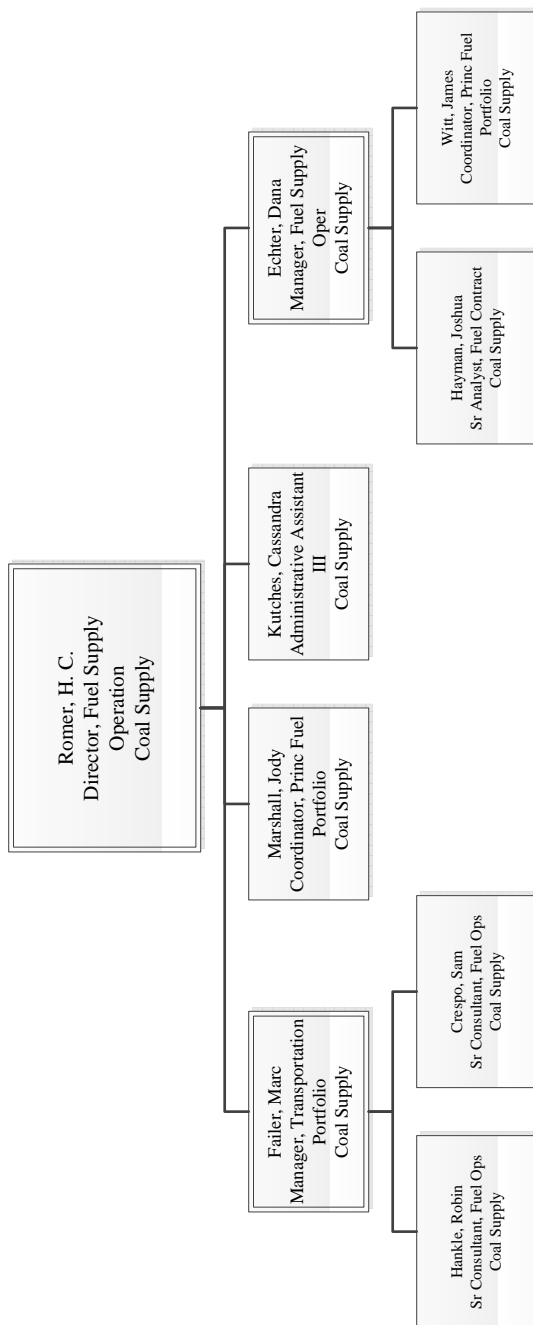
Southwestern Public Service Company Employee Organizational Charts



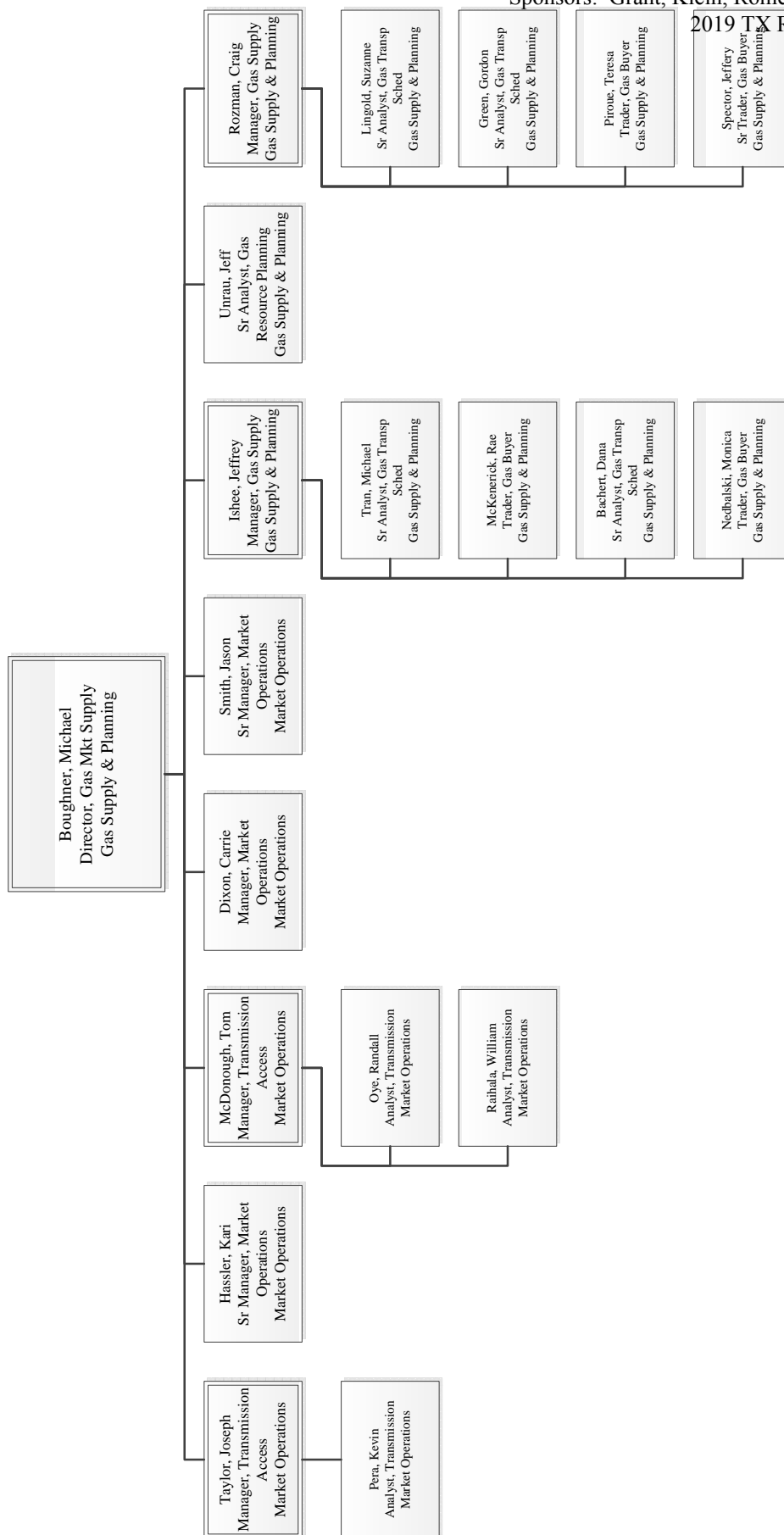
Southwestern Public Service Company
Employee Organizational Charts



Southwestern Public Service Company
Employee Organizational Charts

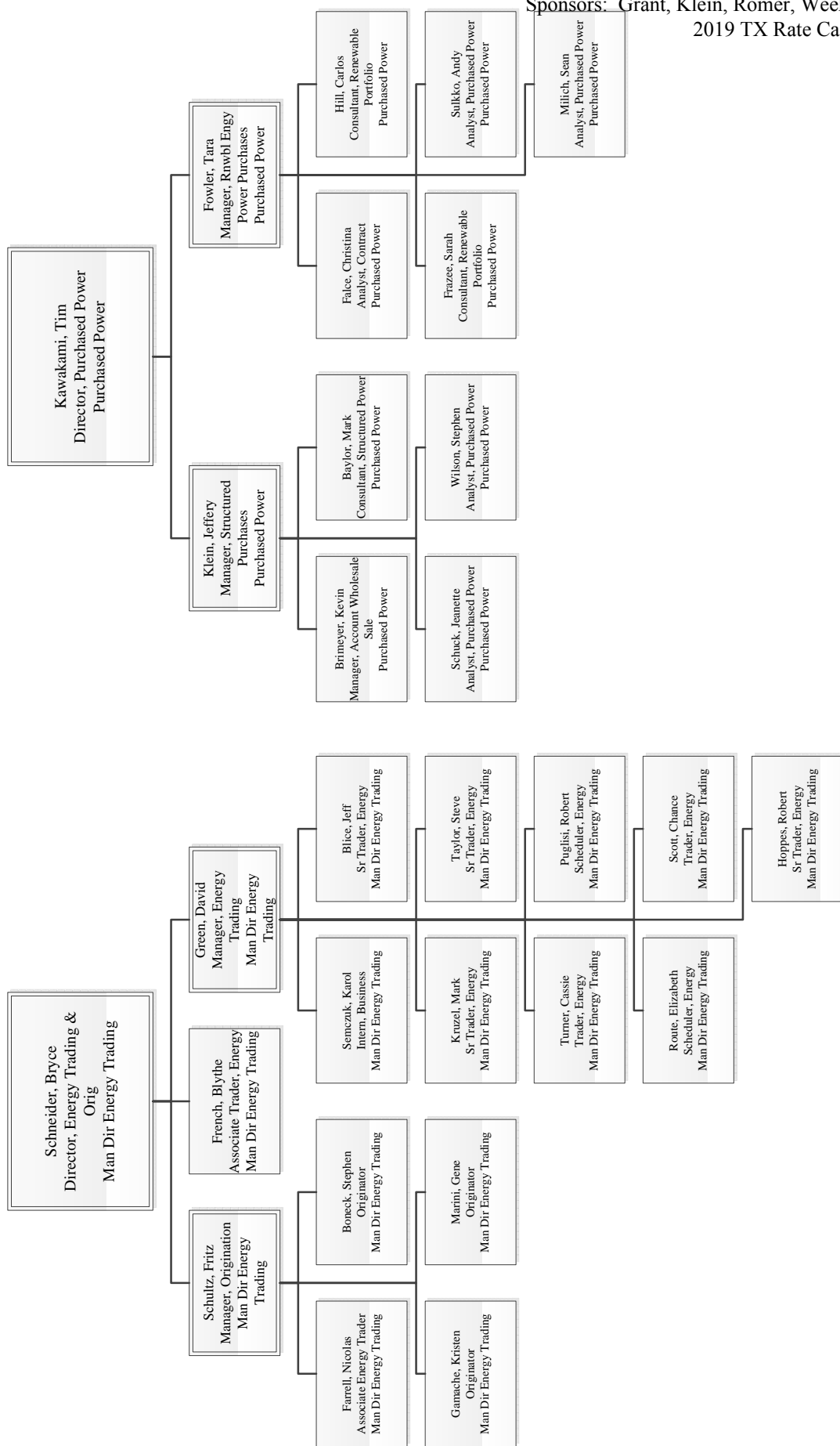


Southwestern Public Service Company
Employee Organizational Charts



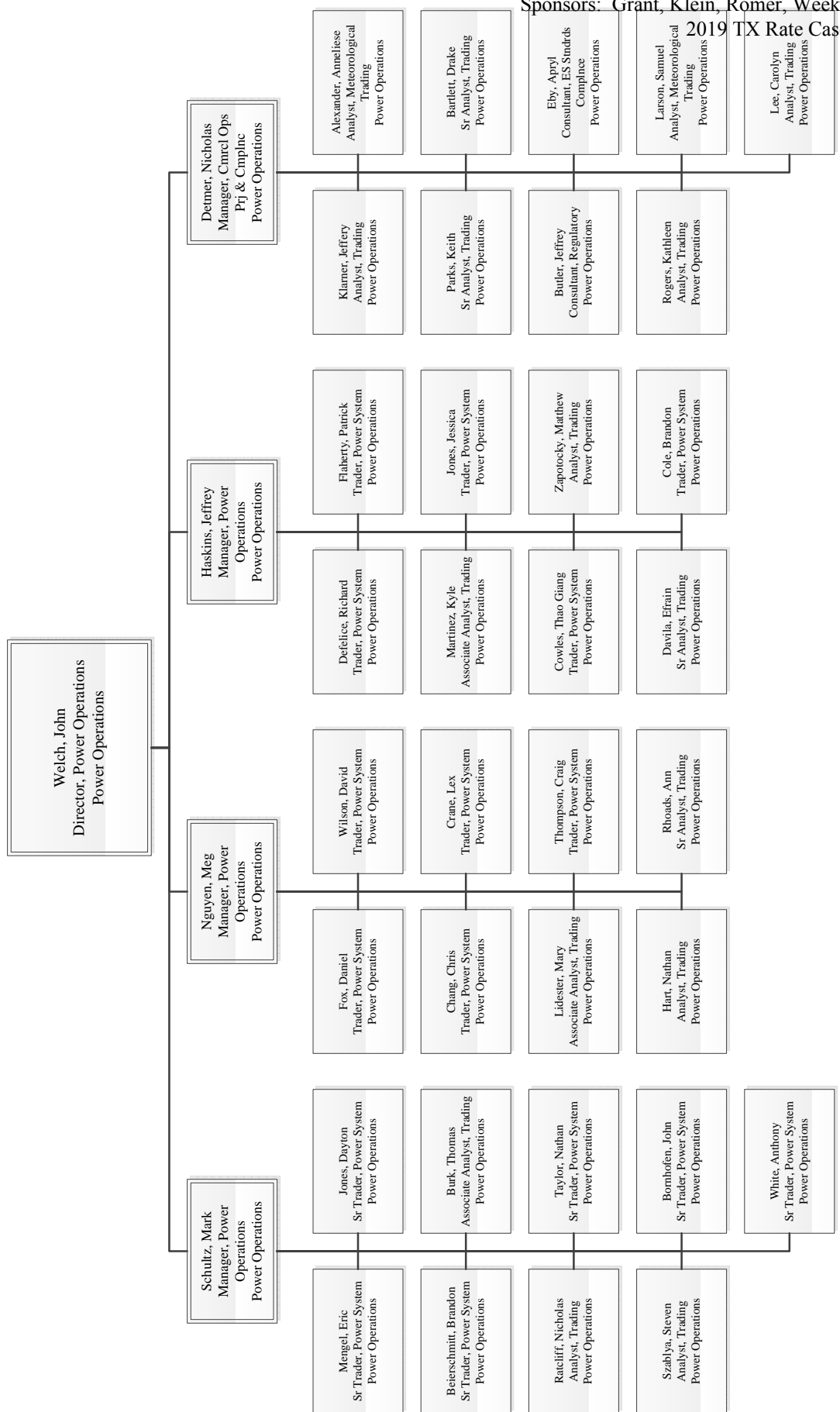
Sponsors: Grant, Klein, Romer, Weeks
2019 TX Rate Case

Southwestern Public Service Company
Employee Organizational Charts



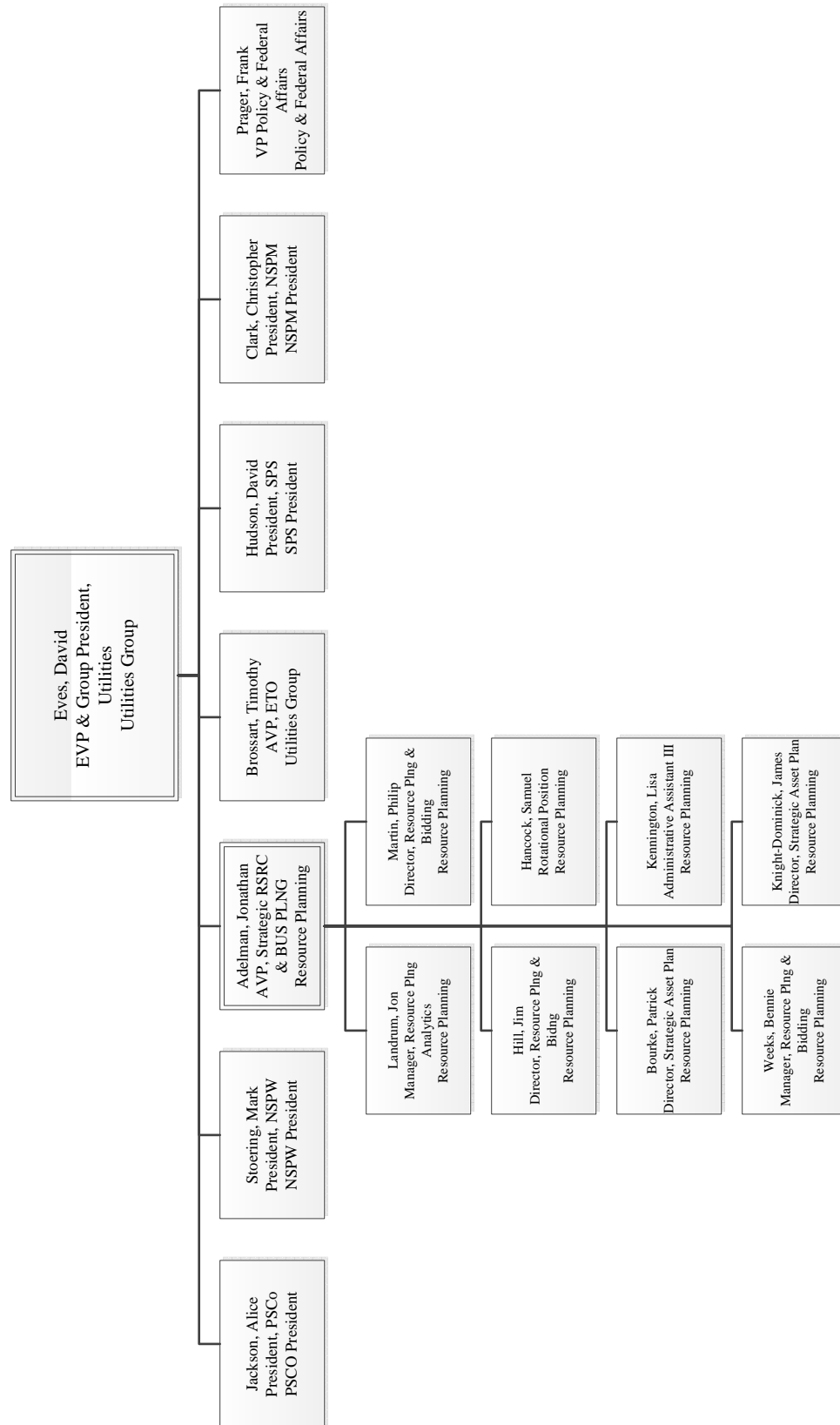
Sponsors: Grant, Klein, Romer, Weeks
2019 TX Rate Case

Southwestern Public Service Company
Employee Organizational Charts



Schedule I-9
Page 6 of 7
Sponsors: Grant, Klein, Romer, Weeks
2019 TX Rate Case

Southwestern Public Service Company
Employee Organizational Charts



Southwestern Public Service Company

Employee Ethics

2019 TX Rate Case

**APPLICATION OF
SOUTHWESTERN PUBLIC SERVICE COMPANY
FOR AUTHORITY TO CHANGE RATES**

I-10(V)

Southwestern Public Service Company

Fuel and Purchased Power Assumptions Narrative

This schedule is not applicable. As discussed in the direct testimony of William A. Grant, Southwestern Public Service Company (“SPS”) has not filed a fuel reconciliation with its current base rate case in accordance with the Order in Project No. 41905 and 16 Tex. Admin. Code § 25.236 (“TAC”) as revised in that project. Additionally, SPS is not proposing a new fuel factor under 16 TAC § 25.237. Therefore, rate year data is not applicable. Please refer to the direct testimony of Jeffrey C. Klein for information on long-term Purchased Power Agreement capacity and non-fuel costs recovered in base rates.

Southwestern Public Service Company

Fossil Fuel Mix

As discussed in the direct testimony of William A. Grant, Southwestern Public Service Company (“SPS”) has not filed a fuel reconciliation with its current base rate case in accordance with the Order in Project No. 41905 and 16 Tex. Admin. Code § 25.236 (“TAC”) as revised in that project. Additionally, SPS is not proposing a new fuel factor under 16 TAC § 25.237 and therefore, rate year data is not applicable.

Southwestern Public Service Company

Ethics – Relationships with Fuel Supplier

Since the end of Southwestern Public Service Company's ("SPS") last fuel reconciliation period (January 1, 2016 through June 30, 2018), no current or former managers, executives, or directors of SPS or any of its affiliates have been involved in any capacity with the management of any provider of fuel or fuel supply service to SPS.

Southwestern Public Service Company

Fuel Audits

As discussed in the testimony of Southwestern Public Service Company (“SPS”) witness William A. Grant, SPS has not filed a fuel reconciliation with its current base rate case in accordance with the Order in Project No. 41905 and 16 Tex. Admin. Code § 25.236 as revised in that project. However, SPS has included this schedule in the filing package because it remains applicable to information presented in SPS’s base rate case.

Coal

1. Company Audited: TUCO, Inc.
2. Service Provided: Coal Supplier
3. Period Audit Covered: October 1, 2016 – December 31, 2017
4. Date Audit Completed: May 16, 2018

1. Company Audited: TUCO, Inc.
2. Service Provided: Coal Supplier
3. Period Audit Covered: October 1, 2017 – December 31, 2018
4. Date Audit Completed: April 30, 2019

Please refer to Attachment HCR-RR-1(CONF) for a copy of the audit reports.

Natural Gas and Fuel Oil

There were no audits performed for natural gas or fuel oil since the end of SPS’s last fuel reconciliation period (January 1, 2016 through June 30, 2018).

Southwestern Public Service Company

Fuel Contract Analyses

April 1, 2018 through March 31, 2019 and April 1, 2019 through June 30, 2019

As discussed in the testimony of William A. Grant, Southwestern Public Service Company (“SPS”) has not filed a fuel reconciliation with its current base rate case in accordance with the Order in Project No. 41905 and 16 Tex. Admin. Code § 25.236 as revised in that project. SPS has included this schedule in the rate filing package with only the information that remains applicable to information presented in SPS’s base rate case.

Purchased Power Agreements:

Purchased Power Agreements	Effective Date(s)
Borger Energy Associates, L.P.	6/12/99 through 6/11/24, SPS has option to extend for 10 years.
Oneta Power, LLC (I) fka Calpine Energy Services, L.P. (I)	1/1/12 through 12/31/18
Oneta Power, LLC (II) fka Calpine Energy Services, L.P. (II)	6/1/14 through 5/31/19
City of Lubbock, TX (Cooke Units)	7/1/04 through 6/30/19
Lea Power Partners, LLC	9/16/08 through 9/15/33
Sid Richardson Carbon, Ltd.	8/1/01 through 7/31/21, year to year thereafter.

Coal Supply Agreements:

Coal Supply Agreements	Effective Dates(s)
TUCO Inc. (Harrington Station)	1/1/2018 through 12/31/2022
TUCO Inc. (Tolk Station)	1/1/2018 through 12/31/2022

Southwestern Public Service Company

Reconcilable Fuel Costs

Schedules:

- I-16.1 Fossil Fuel Mix (Burned)
- I-16.2 Fossil Fuel Mix (Purchased)
- I-16.3 Competitive Spot Fossil Fuel Purchases
- I-16.4 Other Spot Fossil Fuel Purchases

The I-16 schedules are not applicable. As discussed in the Direct Testimony of William A. Grant, Southwestern Public Service Company (“SPS”), has not filed a fuel reconciliation with its current base rate case in accordance with the Order in Project No. 41905 and 16 Tex. Admin. Code § 25.236 as revised in that project.

Schedule I-17.1(CONF)

Pages 1 through 3

Are

Confidential Protected Information

**CONFIDENTIAL PROTECTED MATERIALS
PROVIDED PURSUANT TO PROTECTIVE ORDER**

Southwestern Public Service Company

Lignite Cost Breakdown

Southwestern Public Service Company (“SPS”) did not purchase or burn any lignite during the Test Year (April 1, 2018 through March 31, 2019).

Southwestern Public Service Company

Coal Cost Description

Southwestern Public Service Company (“SPS”) purchases a delivered coal supply at the generating plant bunkers from a single coal supplier, TUCO Inc. (“TUCO”). Therefore, the cost shown on the monthly confidential Fuel Purchase Report is a total cost incurred by TUCO prior to delivery to the bunkers plus a supplier margin. TUCO’s costs for fuel, transportation, handling and other are included in this total cost invoiced to SPS.

Southwestern Public Service Company

Coal and Lignite Supplier Locations

As discussed in the testimony of Southwestern Public Service Company (“SPS”) witness William A. Grant, SPS has not filed a fuel reconciliation with its current base rate case in accordance with Project No. 41905 and 16 Tex. Admin. Code § 25.236 as revised in that project. However, SPS has included this schedule in the filing package because it remains applicable to information presented in SPS’s base rate case.

Harrington Station

	Company	Mine	County	State
2018	Arch Coal Sales	Thunder Complex	Campbell	Wyoming
	Peabody Coal Sales	North Antelope	Campbell/Converse	Wyoming
	Cloud Peak Energy Resources	Antelope	Campbell/Converse	Wyoming
2019	Arch Coal Sales	Thunder Complex	Campbell	Wyoming
	Peabody Coal Sales	North Antelope	Campbell/Converse	Wyoming
	Cloud Peak Energy Resources	Antelope	Campbell/Converse	Wyoming

Tolk Station

	Company	Mine	County	State
2018	Arch Coal Sales	Thunder Complex	Campbell	Wyoming
	Peabody Coal Sales	North Antelope	Campbell/Converse	Wyoming
	Cloud Peak Energy Resources	Antelope	Campbell/Converse	Wyoming
2019	Arch Coal Sales	Thunder Complex	Campbell	Wyoming
	Peabody Coal Sales	North Antelope	Campbell/Converse	Wyoming
	Cloud Peak Energy Resources	Antelope	Campbell/Converse	Wyoming

SPS purchases all of its coal supply needs delivered to the generating plant coal bunkers from a single supplier, TUCO Inc. (“TUCO”). SPS purchases coal from TUCO in Potter County and Lamb County, Texas.

Southwestern Public Service Company

Rail Haul Distance

As discussed in the testimony of Southwestern Public Service Company (“SPS”) witness William A. Grant, SPS has not filed a fuel reconciliation with its current base rate case in accordance with the Order in Project No. 41905 and 16 Tex. Admin. Code § 25.236 as revised in that project. However, SPS has included this schedule in the filing package because it remains applicable to information presented in SPS’s base rate case.

SPS purchases all of its coal supply needs delivered to the generating plant coal bunkers from a single supplier, TUCO Inc. SPS does not have any coal transportation contracts and therefore does not have any resulting rail haul distances to report.

Southwestern Public Service Company

Unit Trains

As discussed in the testimony of Southwestern Public Service Company (“SPS”) witness William A. Grant, SPS has not filed a fuel reconciliation with its current base rate case in accordance with the Order in Project No. 41905 and 16 Tex. Admin. Code § 25.236 as revised in that project. However, SPS has included this schedule in the filing package because it remains applicable to information presented in SPS’s base rate case.

SPS purchases all of its coal supply needs delivered to the generating plant coal bunkers from a single supplier, TUCO Inc. SPS does not have any unit trains.

Southwestern Public Service Company

Cycle Time

As discussed in the testimony of Southwestern Public Service Company (“SPS”) witness William A. Grant, SPS has not filed a fuel reconciliation with its current base rate case in accordance with the Order in Project No. 41905 and 16 Tex. Admin. Code § 25.236 as revised in that project. However, SPS has included this schedule in the filing package because it remains applicable to information presented in SPS’s base rate case.

SPS purchases all of its coal supply needs delivered to the generating plant coal bunkers from a single supplier, TUCO Inc. SPS does not have any unit trains, coal transportation contracts or resulting cycle times.

Southwestern Public Service Company

Rail Cars

As discussed in the testimony of Southwestern Public Service Company (“SPS”) witness William A. Grant, SPS has not filed a fuel reconciliation with its current base rate case in accordance with the Order in Project No. 41905 and 16 Tex. Admin. Code § 25.236 as revised in that project. However, SPS has included this schedule in the filing package because it remains applicable to information presented in SPS’s base rate case.

SPS purchases all of its coal supply needs delivered to the generating plant coal bunkers from a single supplier, TUCO Inc. SPS does not operate, lease, or own any rail cars; therefore SPS has no rail car data.

Southwestern Public Service Company

Rail Car Leases

As discussed in the testimony of Southwestern Public Service Company (“SPS”) witness William A. Grant, SPS has not filed a fuel reconciliation with its current base rate case in accordance with the Order in Project No. 41905 and 16 Tex. Admin. Code § 25.236 as revised in that project. However, SPS has included this schedule in the filing package because it remains applicable to information presented in SPS’s base rate case.

SPS purchases all of its coal supply needs delivered to the generating plant coal bunkers from a single supplier, TUCO Inc. SPS does not, lease, or own any rail cars; therefore SPS has no rail car leases.

Southwestern Public Service Company

Rail Car Maintenance

As discussed in the testimony of Southwestern Public Service Company (“SPS”) witness William A. Grant, SPS has not filed a fuel reconciliation with its current base rate case in accordance with the Order in Project No. 41905 and 16 Tex. Admin. Code § 25.236 as revised in that project. However, SPS has included this schedule in the filing package because it remains applicable to information presented in SPS’s base rate case.

SPS purchases all of its coal supply needs delivered to the generating plant coal bunkers from a single supplier, TUCO Inc. SPS does not operate, lease, or own any rail cars and therefore has no maintenance program for cars used to transport coal to the utility’s generating stations.

Southwestern Public Service Company

Rail Car Repairs

As discussed in the testimony of Southwestern Public Service Company (“SPS”) witness William A. Grant, SPS has not filed a fuel reconciliation with its current base rate case in accordance with the Order in Project No. 41905 and 16 Tex. Admin. Code § 25.236 as revised in that project. However, SPS has included this schedule in the filing package because it remains applicable to information presented in SPS’s base rate case.

SPS purchases all of its coal supply needs delivered to the generating plant coal bunkers from a single supplier, TUCO Inc. SPS does not operate, lease, or own any rail cars and, therefore, had no “Bad Order” rail car repairs.

Southwestern Public Service Company

Fuel Management Travel

FERC Account 501.8

Line No.		SPS	PSCo	NSP-M	NSP-W	Total/XES
1	April-2018	\$ 1,570	\$ 1,831	\$ 1,903		\$ 5,304
2	May-2018	2,664	1,347	2,465	1,338	7,814
3	June-2018	2,118	3,069	4,315		9,502
4	July-2018	61	1,125	122	390	1,699
5	August-2018	2,115	2,202	1,877	251	6,445
6	September-2018	76	1,193	151		1,420
7	October-2018	2,441	1,837	3,893	691	8,862
8	November-2018	1,557	1,550	1,921		5,028
9	December-2018	2,461	2,918	3,994	570	9,942
10	January-2019	732	1,690	1,766	488	4,677
11	February-2019	1,062	1,149	2,032	23	4,265
12	March-2019	2,539	2,315	4,974	1,575	11,404
13	Total*	\$ 19,396	\$ 22,226	\$ 29,414	\$ 5,327	\$ 76,363

Note: As discussed by William A. Grant, Southwestern Public Service Company ("SPS") has not filed a fuel reconciliation with its current base rate case in accordance with the Order in Project No. 41905 and 16 Tex. Admin. Code § 25.236 as revised in that project. However, SPS has included this schedule in the filing package because it remains applicable to information presented in SPS's base rate case.

Southwestern Public Service Company

Fuel Management

As discussed in the testimony of Southwestern Public Service Company (“SPS”) witness William A. Grant, SPS has not filed a fuel reconciliation with its current base rate case in accordance with the Order in Project No. 41905 and 16 Tex. Admin. Code § 25.236 as revised in that project. However, SPS has included this schedule in the filing package because it remains applicable to information presented in SPS’s base rate case.

Power Purchase Agreements

- SPS’s ongoing practice regarding long-term purchased power agreements is to purchase power and energy under long-term agreements and administer those agreements to provide its customers with the lowest reasonable cost of power available consistent with predicted market conditions, power supply reliability, system reliability, and electric system constraints.

Coal

- SPS performed an annual audit of its coal supply agreements during the Test Year.
- Agreements utilizing multiple suppliers were executed. This provides the benefits of supply diversity and reduced risk associated with a single source supplier.
- SPS worked with TUCO Inc. to authorize several projects at the Tolk and Harrington Stations’ coal handling facilities to improve safety and efficiency. Please refer to the Direct Testimony of H. Craig Romer for additional information regarding the projects.

SPP Integrated Marketplace and Short-Term Energy Markets

SPS also actively participates in short-term energy markets, primarily the Southwest Power Pool’s Integrated Marketplace. SPS buys short-term energy when such purchases are expected to reduce system-wide fuel costs and sells short-term energy when it expects to profit from such sales.

Natural Gas and Oil

- SPS has actively worked since the previous Test Year to manage increasing demand costs caused by increased pipeline demand. As a result of the increased natural gas production in the Permian Basin, pipelines delivering out of the basin, including the ONEOK Westex Gas Transmission (“OWT”) system, have become heavily utilized and have experienced an increase in market demand over the past several years. When SPS’s firm gas transportation agreement with OWT was up for renewal in April 2017, rather than fully renewing the agreement under OWT’s increased demand rates, SPS renewed only a portion of its firm capacity with OWT. SPS negotiated for replacement capacity from El Paso Natural Gas (“EPNG”), a competitor pipeline to OWT, increasing the capacity SPS

holds on EPNG. In conjunction with extending part of the firm transportation service with OWT, SPS also extended its gas storage service with ONEOK Texas Gas Storage (“OTGS”). This entire arrangement further diversifies SPS’s portfolio of firm gas transportation service to the SPS generation portfolio while ensuring reliability for its customers by maintaining the same level of firm hourly service to the plants. The combination of these new contracts resulted in savings for SPS customers of \$5.9 million (Total Company) during the Test Year when compared to an extension of the existing firm capacity with OWT at higher rates.

- SPS participated in EPNG’s rate case at Federal Energy Regulatory Commission (“FERC”) for the benefit of SPS’s customers. On September 30, 2010, EPNG filed a rate case (Docket No. RP10-1398) at FERC. SPS intervened and was an active participant in the proceedings, challenging EPNG’s proposed methodology for allocating costs to rate zones where SPS holds firm transportation. FERC issued the Final Order in the case on May 3, 2018, ruling, among other matters, in SPS’s favor on the cost allocation methodology issue. This decision resulted in a \$12 million refund (including interest) for SPS customers (Total Company), retroactively applicable back to April 2011. This decision also reduced rates prospectively beginning in June 2018. The portion of the refund and the prospective rate reductions that are applicable during the Test Year reflect \$7.0 million in savings for the SPS Texas retail customers.
- In December 2017, the United States Congress passed the Tax Cuts and Jobs Act (“TCJA”) which reduced corporate income tax rates from 35% to 21%. In response to that Act, FERC issued Order 849 in Docket No. RM18-1, directing a review of the rate impact from the TCJA for interstate pipelines by filing form 501-G. This filing permits FERC and customers to review pipelines’ current rates given their lower tax obligations. FERC’s Order permitted four compliance mechanisms for pipelines to either reduce rates or show cause for not changing rates: 1) a limited Section 4 rate reduction filing; 2) a commitment to file a general Section 4 rate reduction filing; 3) provide an explanation why no rate change is needed; and 4) take no action. EPNG filed its form 501-G on October 11, 2018 (Docket No. RP19-73) and elected to provide an explanation why no rate change was needed, despite reflecting a 21.4% return on equity in its form 501-G. SPS and seven other parties filed protests requesting that FERC initiate a review of EPNG’s rates. As a result of these protests, EPNG initiated settlement negotiations with its customers to reduce its rates. SPS actively participated in these negotiations and was instrumental in achieving a settlement that provides for significantly reduced rates that will return the benefits of the TCJA to SPS’ customers. On March 15, 2019, EPNG filed a settlement agreement that will reduce the reservation rates by 10.6% to 12.5% and the daily usage rates by 50% to 70%, depending on the rate zone on the EPNG system. FERC approved the settlement on May 2, 2019, and the rate reductions, once placed into service, will be retroactively effective on January 1, 2019. This settlement offers SPS’ customers estimated savings of \$976,000 (Total Company) per year.
- SPS realigned receipt point capacity on its Northern Natural Gas (“NNG”) firm transportation agreement from northern receipt points to locations in the Permian Basin Field Area in the spring of 2018. This realignment took advantage of lower contract

reservation rates at the new receipt points, saving SPS customers \$166,100 (Total Company) during the Test Year.

- SPS continues to contract with NNG for a storage service with a term of June 1, 2008 through March 31, 2028. This contract has been converted from NNG's 4-Step service to a new service requested by SPS specifically for electric generation effective June 1, 2018. Unlike traditional storage services which must be filled during the summer months for use during the winter, the new Electric Generation ("EG") service on NNG allows for withdrawals, and hence protection against price volatility year round, including the summer months when electric demand peaks. This EG service differs from the traditional 4-Step service in that it gives SPS more flexibility to inject and withdraw throughout the year, avoiding potential counter-season charges and/or intraday gas purchase premiums. It is estimated that this conversion will save SPS customers approximately \$244,000 (Total Company) per year through the remaining term of the contract.

Southwestern Public Service Company

Fuel Costs Over/Under Recovery

This schedule is not applicable. As discussed in the testimony of William A. Grant, Southwestern Public Service Company (“SPS”) has not filed a fuel reconciliation with its current base rate case in accordance with the Order in Project No. 41905 and 16 Tex. Admin. Code § 25.236 (“TAC”) as revised in that project. Additionally, SPS is not proposing a new fuel factor under 16 TAC § 25.237.