

2019 Women in Welding Competition

Sponsored by Xcel Energy

Tuesday, March 26, 2019
10 a.m. – 3 p.m.

St. Cloud Technical & Community College
1540 Northway Drive
St. Cloud, MN 56303

This competition is open to any interested high school or college student.

Competition	Steel	Skill Levels
Shielded metal arc welding (SMAW)	1/4" or thicker mild steel; 1/8" E-7018 and 1/8" E-6010 welding rods	1. High school 2. College
Gas metal arc welding (GMAW)	1/8" mild steel; .035" ER-70S-6 wire with 90% Argon and 10% CO2 (C10)	1. High school 2. College
Gas tungsten arc welding (GTAW)	14ga. 304 stainless steel; 1/16" and 3/32" ER-308 filler rod available	1. High school 2. College
Oxy-fuel cutting (OFC)	3/8" mild steel	One level

Judges

One Certified Welding Inspector (CWI) and two other judges will evaluate the welds for each category.

Cost

\$5 per contestant per competition

Teachers: Try out new equipment from vendors like Lincoln Electric.

Contestants: What to Bring

- Protective clothing that covers the entire body
- Leather boots that go over the ankle
- Welding gloves
- Safety glasses
- Welding helmet
- Tape measure

Note: Pliers, squaring tool and soap stone or pencil will be provided.

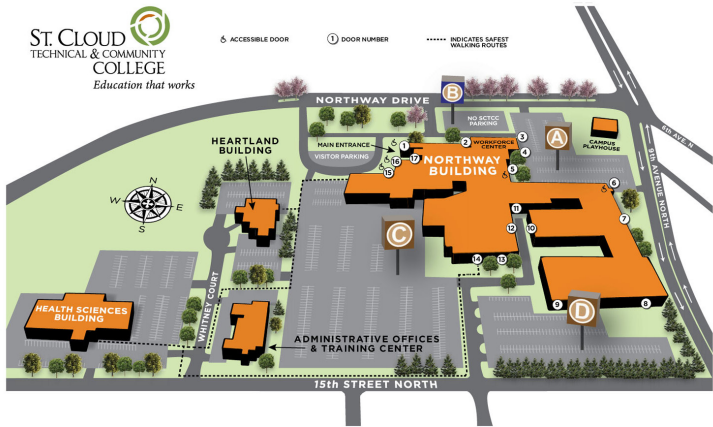
Prizes will be awarded to top participants!

https://mnscu.rschooltoday.com/public/costoption/class_id/101985/

Directions

Parking lot A: Use door 6
Parking lots C and D: Use door 8, 9 or 10

Registration: Room 1-361
Welding Lab: Room 1-367
Note: Parking will be FREE on March 26



St. Cloud Technical & Community College
1540 Northway Drive
St. Cloud, MN 56303

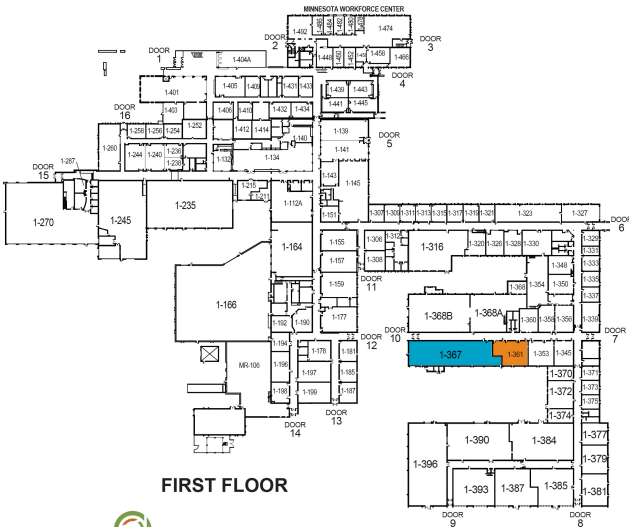
Health Sciences Building
1245 15th Street North
St. Cloud, MN 56303

Heartland Building
1520 Whitney Court
St. Cloud, MN 56303

President's Office/Training Solutions
1215 15th Street North
St. Cloud, MN 56303

www.sctcc.edu | 320-308-5000 | 800-222-1009

SCTCC is a member of Minnesota State and accredited by the Higher Learning Commission. ADA accessible facility. Affirmative action/equal opportunity educator/employer.



FIRST FLOOR

ST. CLOUD
TECHNICAL & COMMUNITY
COLLEGE
A member of Minnesota State

Northway Building