

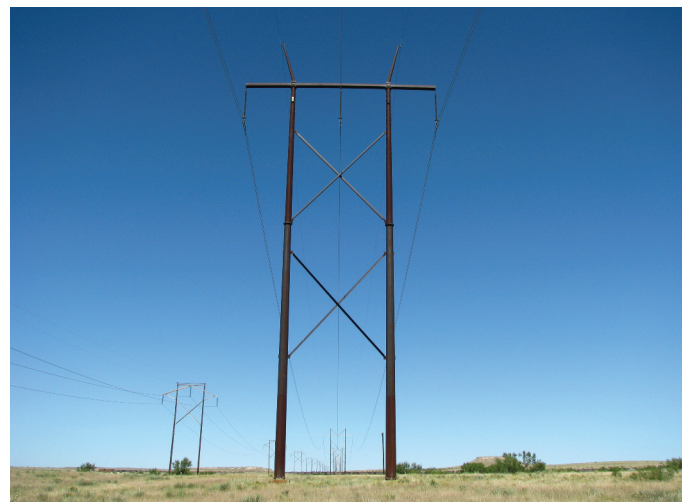
Rush Creek Wind and Transmission Project Update

As the nation's No. 1 utility wind provider, Xcel Energy has a proven track record in renewable energy. We know our customers want more clean energy choices and that is why we are seeking approval to build, own and operate the Rush Creek Wind and Transmission Project. Rush Creek would be the largest wind farm in the state of Colorado and would include 600 megawatts (MW) of new wind generation, an approximately 90-mile 345 kilovolt (kV) transmission line and two new substations in eastern Colorado.

Settlement Agreement Reached

Xcel Energy filed with the Colorado Public Utilities Commission (CPUC) on May 13, 2016 requesting two Certificates of Public Convenience and Necessity (CPCNs) to: (1) construct and operate the Rush Creek wind generation facilities, and (2) construct and operate the approximately 90-mile 345 kV generation intertie to connect the wind generation facilities to the electric grid. On September 2, Xcel Energy and multiple parties agreed to a settlement that would approve the CPCNs and allow for Xcel Energy to move forward with the Rush Creek project. The CPUC held a public hearing on the settlement agreement on September 9, 2016. The settlement agreement

must be approved by the CPUC and a final Commission decision will be issued by November 10, 2016. Pending approvals by the CPUC and county governments, construction on the project is planned to begin in April 2017. The proposed in-service date for the Rush Creek project is October 2018.



This is a representative 345 kV H-frame transmission line structure that will be used on the Rush Creek project. The structures are typically 100 to 130 feet tall with a 150 foot right-of-way.

2016 Transmission Line Schedule

Dates and times are subject to change. Check back at transmission.xcelenergy.com for updates on hearing dates and locations.

May

- May 13: Xcel Energy filed CPCNs
- Xcel Energy and Invenergy held public meetings on potential route alternatives

June

- Xcel Energy and Invenergy held public meetings on potential route alternatives

July

- Xcel Energy filed permit applications with Arapahoe and Elbert Counties

August

- Xcel Energy filed permit application with Lincoln County

September

- Sept. 9: CPUC held hearing on Settlement Agreement
- Sept. 29: Lincoln County Land Use Board hearing, 7:00 p.m. in the Jury Assembly Room 103 3rd Ave., Hugo, CO

October – December

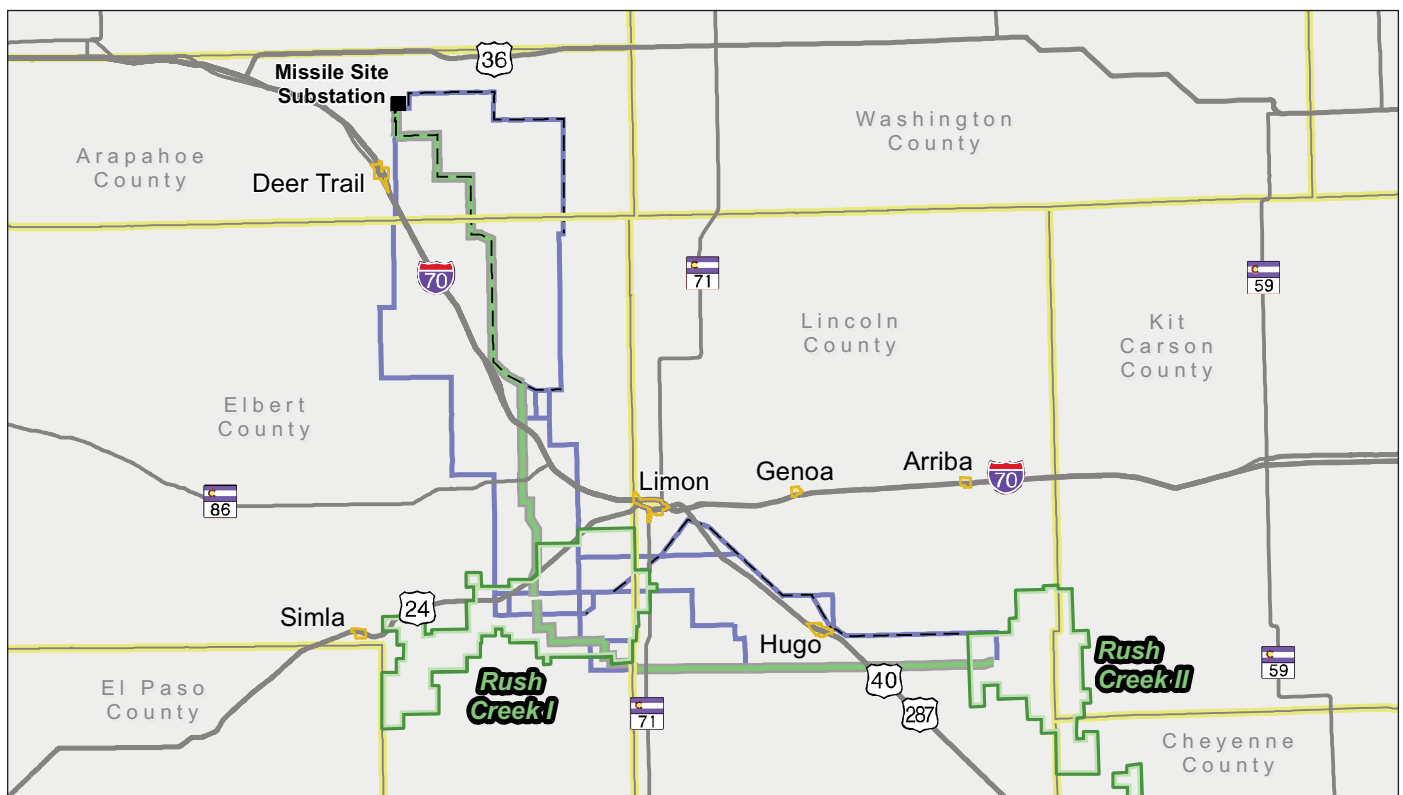
- Lincoln County Board of County Commissioners, Arapahoe County Planning & Zoning, Arapahoe Board of County Commissioners and Elbert County Board of County Commissioners to hold public hearings on project
- November: CPUC to issue final decision on project

Project Overview

Rush Creek Wind will be capable of generating enough renewable electricity to power about 325,000 homes. The wind farms will cover approximately 95,000 acres in Elbert, Lincoln, Kit Carson and Cheyenne Counties. The proposed 90-mile 345 kV transmission line will connect the wind farm to Xcel Energy's existing Missile Site Substation in Arapahoe County (see map). The transmission line will also be available for future generation expansion opportunities for other renewable energy developers to interconnect projects into the line. Xcel Energy is managing permitting for the transmission line portion of the project. Invenergy has acquired land leases and is conducting local permitting activities for the wind farm facilities in Cheyenne, Kit Carson, Lincoln and Elbert Counties.



The Rush Creek project is expected to include 300 wind turbines. Each of the wind turbines will have an estimated capacity of 2 megawatts for a 600 megawatt total capacity. The turbine hub height is typically about 260 feet with the tip of the blade being approximately 440 feet tall.



For more information on the transmission line routing process go to transmission.xcelenergy.com. You can learn more about the wind farm siting process by going to invenergyllc.com.

Rush Creek Wind Project

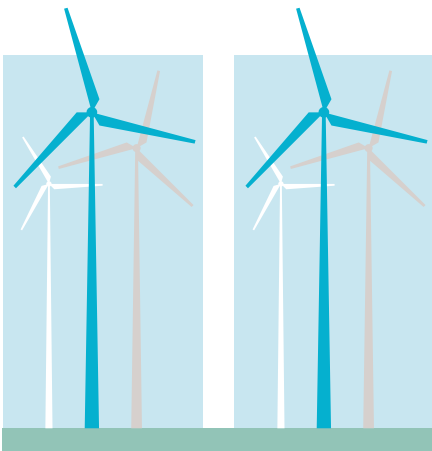
A quick glance at our proposal to deliver more low-cost, carbon-free wind power to Colorado and inject \$1 billion into the region's economy

Largest wind project in the state

Two wind farms will supply

600 megawatts

of clean, renewable energy to customers



That's enough to power approximately

325,000 homes

90 miles

of transmission line to connect and carry wind power output from the turbines to our existing Missile Site Substation

Powering the economy



100% "Made in Colorado"

300 Vestas wind turbines

to be designed and manufactured in Brighton, Pueblo, and Windsor

3x

the number of Vestas wind turbines installed in the state today

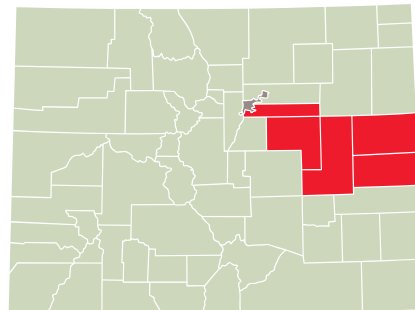
Up to **240** wind farm development jobs



Up to **100** transmission line construction jobs



Up to **30** substation construction jobs



\$180 million

in landowner lease payments and property taxes

Will benefit landowners in

five counties:

Arapahoe, Cheyenne, Elbert, Kit Carson, and Lincoln

Will save Xcel Energy customers **\$800 million** over the next 25 years

Majority of savings occurs in first 10 years of operation

Our Energy Future

The Rush Creek project is part of Xcel Energy's Our Energy Future initiative. The mission of Our Energy Future is to power new technology, power our state's economy and empower customer choice. Learn more at xcelenergy.com/COEnergyFuture.



RESPONSIBLE BY NATURE®

1800 Larimer St. Suite 400
Denver, CO 80202



Xcel Energy and Invenergy held public meetings on potential route alternatives in May and June 2016.

Contact us

You can submit questions or comments by calling 1-844-688-4282 or sending an email to rushcreekconnect@powereng.com.

The latest project information is also available at transmission.xcelenergy.com by clicking on "Projects" and "Rush Creek Connect".

Rush Creek Wind and Transmission Project Update

Xcel Energy is proposing to build, own and operate 600 megawatts (MW) of new wind generation, an approximately 90-mile 345 kilovolt (kV) transmission line and two new substations in eastern Colorado. If approved, the project would be the largest wind farm in the state of Colorado.

Transmission line route proposal

All local permits have been filed by Xcel Energy in Arapahoe, Elbert and Lincoln Counties for approval of the transmission line route (view map inside). Each county will hold public hearings (schedule inside) to determine a decision on the route process. Counties will notify landowners when a final date, time and location for the hearings has been scheduled. The latest information on public hearings will also be available on the project website at transmission.xcelenergy.com by clicking on "Projects" and "Rush Creek Connect".

Quick facts

- 600 megawatts of wind power
- 90-mile 345 kilovolt transmission line
- Targeted in-service date: 2018

Benefits

- Deliver clean, carbon-free wind energy
- Lowest cost wind resource on our Colorado system
- Create hundreds of jobs and brings more than \$1 billion into the regional economy
- Generate \$800 million in savings for customers
- 300 Vestas wind turbines built in Brighton, Pueblo and Windsor